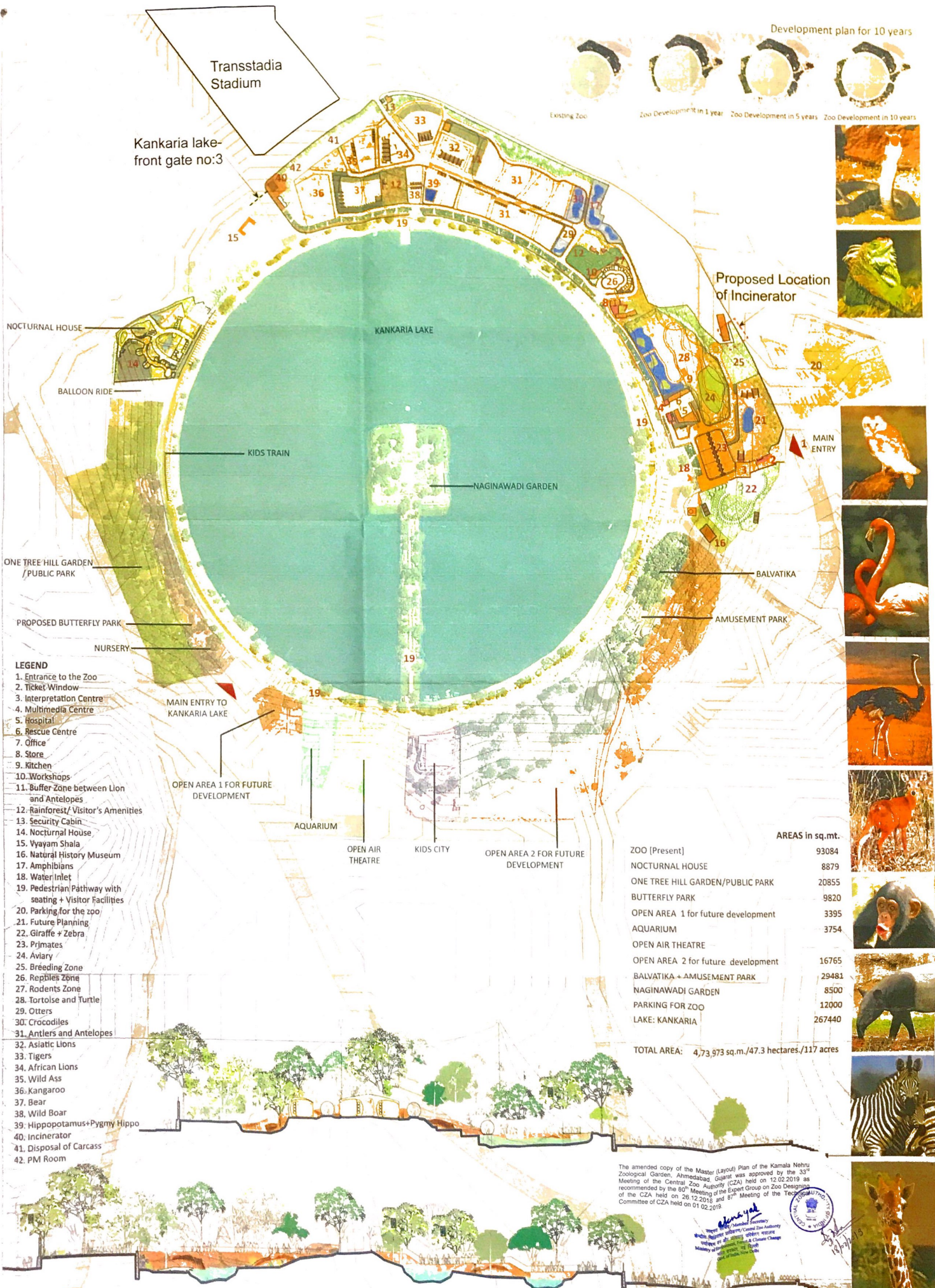


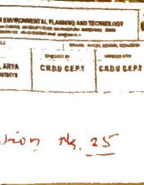
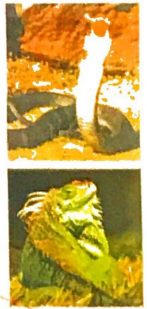


Transstadia Stadium

Kankaria lake-front gate no:3



Proposed Location of Incinerator



LEGEND

1. Entrance to the Zoo
2. Ticket Window
3. Interpretation Centre
4. Multimedia Centre
5. Hospital
6. Rescue Centre
7. Office
8. Store
9. Kitchen
10. Workshops
11. Buffer Zone between Lion and Antelopes
12. Rainforest/ Visitor's Amenities
13. Security Cabin
14. Nocturnal House
15. Vyayam Shaia
16. Natural History Museum
17. Amphibians
18. Water Inlet
19. Pedestrian Pathway with seating + Visitor Facilities
20. Parking for the zoo
21. Future Planning
22. Giraffe + Zebra
23. Primates
24. Aviary
25. Breeding Zone
26. Reptiles Zone
27. Rodents Zone
28. Tortoise and Turtle
29. Otters
30. Crocodiles
31. Antlers and Antelopes
32. Asiatic Lions
33. Tigers
34. African Lions
35. Wild Ass
36. Kangaroo
37. Bear
38. Wild Boar
39. Hippopotamus+Pygmy Hippo
40. Incinerator
41. Disposal of Carcass
42. PM Room

AREAS in sq.mt.

ZOO (Present)	93084
NOCTURNAL HOUSE	8879
ONE TREE HILL GARDEN/PUBLIC PARK	20855
BUTTERFLY PARK	9820
OPEN AREA 1 for future development	3395
AQUARIUM	3754
OPEN AIR THEATRE	
OPEN AREA 2 for future development	16765
BALVATIKA + AMUSEMENT PARK	29481
NAGINAWADI GARDEN	8500
PARKING FOR ZOO	12000
LAKE: KANKARIA	267440

TOTAL AREA: 4,73,973 sq.m./47.3 hectares/117 acres

The amended copy of the Master (Layout) Plan of the Kamala Nehru Zoological Garden, Ahmedabad, Gujarat was approved by the 33rd Meeting of the Central Zoo Authority (CZA) held on 12.02.2019 as recommended by the 60th Meeting of the Expert Group on Zoo Designing of the CZA held on 26.12.2018 and 87th Meeting of the Technical Committee of CZA held on 01.02.2019.

