

GOVT. OF BIHAR
DEPARTMENT OF ENVIRONMENT,
FOREST AND CLIMATE CHANGE

RAJGIR ZOO SAFARI

N A L A N D A

ANNUAL REPORT
2 0 2 1 - 2 2

RAJGIR WILDLIFE SAFARI

राजगीर वन्यप्राणी सफारी





Swarna, Tigeress



GOVT. OF BIHAR
DEPARTMENT OF ENVIRONMENT,
FOREST AND CLIMATE CHANGE

RAJGIR ZOO SAFARI

N A L A N D A



ANNUAL REPORT
2 0 2 1 - 2 2

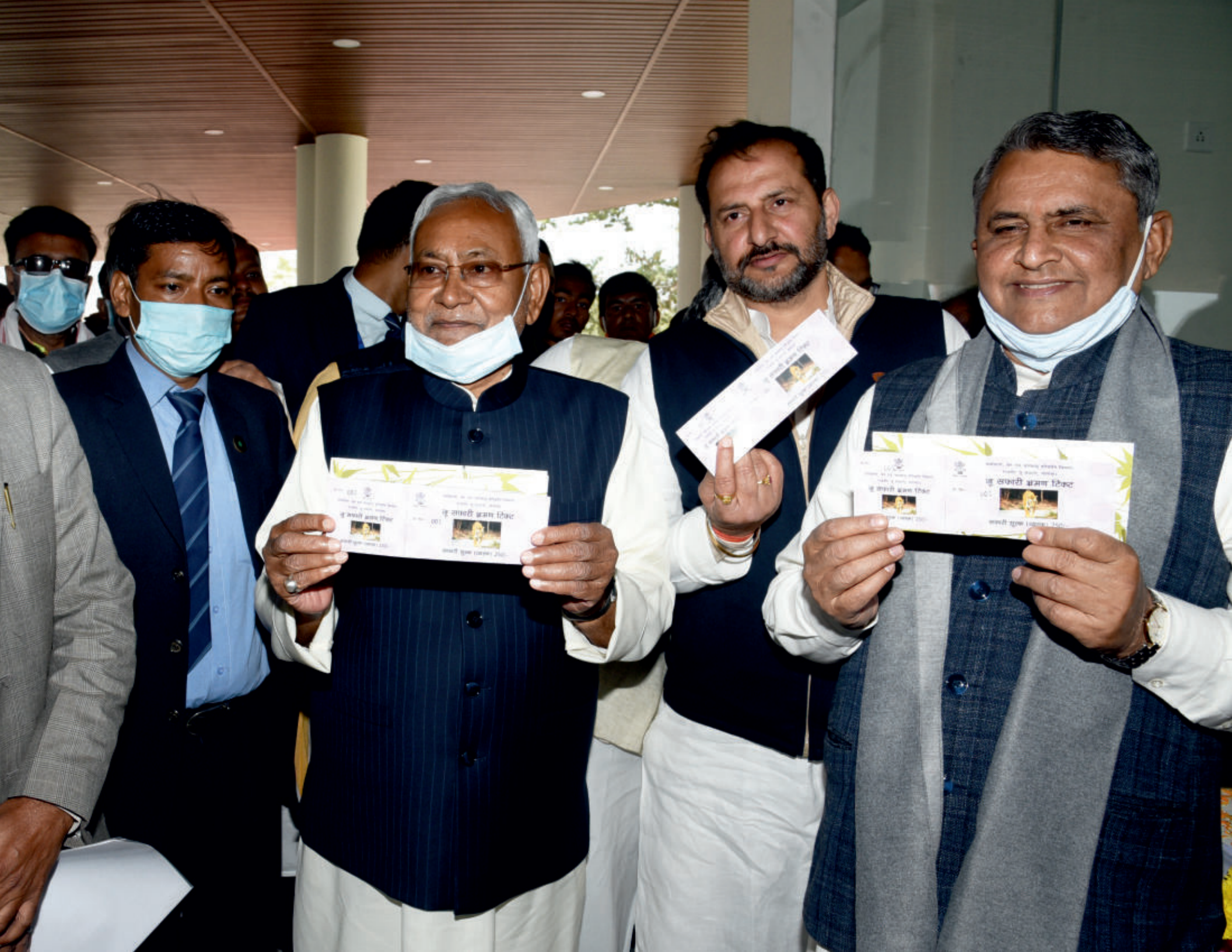


RAJGIR WILDLIFE SAFARI











बिहार सरकार

पर्यावरण, वन एवं जलवायु परिवर्तन विभाग

"राजगीर वन्यप्राणी (जू) सफारी"

का
लांकुपिण

16 फरवरी 2022

श्री नीती

माननीय मु
के

श्री तारकिशोर

माननीय उप मुख्यमंत्री,

श्री विजय

माननीय मंत्री,



Veterinary Hospital



Animal Retiring R



TRANSFORMING VISION INTO REALITY: THE STORY OF RAJGIR ZOO SAFARI



Dr. Gopal Singh, IFS

OSD to Chief Minister, Bihar
Regional Chief Conservator of Forest, Patna,
Cum-Chairman, Project Monitoring Committee,
Rajgir Zoo Safari, Nalanda

Brief Introduction:

It is a matter of great pleasure that Rajgir Zoo Safari, Bihar's first and only Zoo Safari, has been receiving an enormous response from visitors. The continued high visitor flow attests to the ongoing success of Rajgir Zoo Safari. The animals are healthy and in good vigor due to the facilities developed for them in natural habitat. We are able to provide livelihood to more than 500 families directly and many more indirectly. The quality of the forest has also improved in recent years. All these signify that the design strategy with which Rajgir Zoo Safari has been developed has been successful in letter and spirit.

It gives great satisfaction to see that the project has come up very nicely as per the vision and design strategy against all odds and difficulties. Obviously, the execution of such a big project was the first of its kind and a new experience for the department. The primary vision behind the project was to create an internationally recognized wildlife ex-situ conservation facility. The beauty of this project is its location which is a near-natural habitat of native wild animals. The main design strategy which we adopted is to use the best quality material which will make it a maintenance-free facility.

Rajgir Zoo Safari, which spreads over 191.12 hectares of scenic natural forest, surrounded by picturesque hills from two sides, is located near the historically

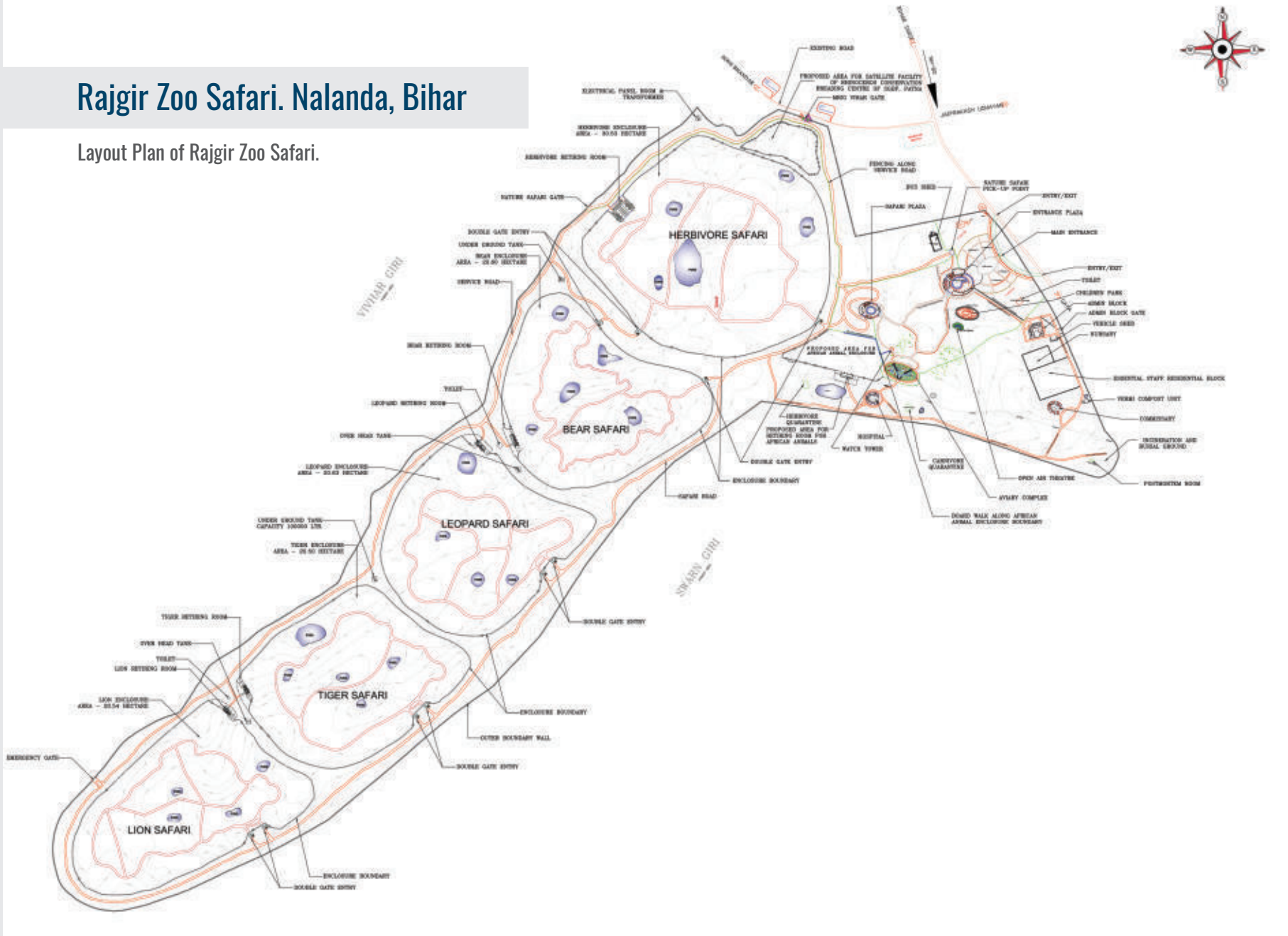


and religiously important city of Rajgir in Bihar's Nalanda district. It is based on a unique idea where wild animals roam freely in a restricted forest area, and visitors can see them from a closed, secure vehicle.

The idea of developing a world-class eco-tourism facility in Rajgir started in 2008 when Shri Nitish Kumar, Hon'ble Chief Minister of Bihar, visited the erstwhile Mrig Vihar located in Rajgir during one of his frequent visits to Rajgir. Being an ardent supporter of the concept of forest and wildlife conservation, the Hon'ble Chief Minister had a vision of developing a state-of-the-art wildlife-based eco-tourism facility to spread awareness among the people of Bihar about nature and wildlife conservation. Being posted in the Chief Minister office for considerably long time and also being in State Forest Department at different positions, as Conservator of Forest, Patna Circle and Regional Chief Conservator

Rajgir Zoo Safari. Nalanda, Bihar

Layout Plan of Rajgir Zoo Safari.



of Forest, Patna, I could connect with the vision that Hon'ble Chief Minister was having for this safari. Thus, I was fortunate to be involved in all stages of the development of Rajgir Zoo Safari, starting from its concept to its reality and currently in its successful operation.

Initially, it was planned to develop a zoo in Rajgir which would supplement Sanjay Gandhi Biological Park, Patna, in Southern Bihar and would also work as a rescue center for rescued wild animals, especially Sloth Bear and Leopard, etc. But, since a new concept of Safari was emerging at that time, it was decided to develop Bihar's first Wildlife Safari with international level facilities for wildlife and for visitors.

The initial designs provided by the consultant were very ordinary and were not tourist and management-friendly. Nor were the designs as per the expectations of the state Govt, which desired a safari of international standards. During my first field visit as in-charge, after the responsibility of project execution was given to Patna region, it was noted that the area provided was not sufficient to cater number of tourists visiting Rajgir. The visitor zone was proposed to be constructed in low-lying water inundated area. There was no separate visitor reception area. Crowd management and tourist circulation was not considered in thoroughly. Contour were not considered while preparation of designs. Proposed area for parking facilities was not sufficient. Even for animal enclosures, the concept given by the consultant was to build this zoo safari in a rudimentary normal way, by constructing enclosures using normal MS chain link. There were practical issues related to the implementation of some of the ideas suggested by the consultant

Thus, it was decided that since this is a prestigious and dream project of the Bihar Government, the best resources need to be utilized in this project. We took a number of policy decisions at this point like,

1. The location and complete design of visitor zone was changed and it was decided to shift the visitor zone to area near main road. Now, the new design was prepared to cater to a minimum of 5,000 visitors a day and 1,000 tourists at a time by giving sufficient space at the entrance and by spreading the facilities at a sufficient distance, for effective crowd management. The design and facilities provided in the visitor zone were finalized to give the best visitor experience with modern facilities. The infrastructures at the reception zone were designed in an oval shape so that it will use minimum space to fit in maximum facilities. This will also ensure hassle-free movement of visitors, which visitors expect during such visits. It was decided to develop a stone wall with the use of local stones to give the entrance a historical look of Rajgir's Cyclopean Wall. Also, around 2 hectares of the area is provided for the parking of visitor's vehicles and local transportation vehicles.

2. It was decided to use the best quality material to make this facility maintenance-free. Hence, use of Stainless Steel solid bars for animal cells and GI chain link and poles for the enclosure boundary instead of rudimentary use of MS was proposed. This guaranteed a minimum of 20 years of maintenance-free enclosures.



Selfie point, which is very famous among tourists.

3. A comprehensive project plan was prepared including all components of zoo management and got fresh approval for the project from competent authority. Thus, now the project budget was increased to around 176 Cr. instead of earlier approved 59.64 Cr.

4. Citing visitor safety, it was decided to develop all-weather roads instead of the impractical solution given by the consultant to make roads with lime stabilization technique.

5. It was decided to use specially modified safari vehicles with enhanced window space to give maximum possible visibility to tourists.

6. During this period, some decisions were taken like the posting of the best human resource of State Forest Department for implementation of the project on-site. Thus, an energetic officer like Dr. K Nesamani, IFS was appointed as Divisional Forest Officer, Nalanda Forest Division. Dr. D. N. Singh, Retd IFS, and former Member Secretary, CZA were appointed as a wildlife expert for the project for necessary expert guidance in zoo designing. Later, finding that there is a need for a separate Director for Rajgir Zoo Safari to carry out its project implementation as per design, a young and dedicated IFS officer Hemant Patil was posted as Director, Rajgir Zoo Safari and as site incharge. He was fully dedicated to the work, focused on outcomes, and was always oriented towards effective solutions. His brilliant analytical and newly acquired technical knowledge enabled him to carry out assigned tasks with high efficiency.

The development of Rajgir Zoo Safari had to face a number of critical issues during its implementation phase. The issues were mitigated with the number of field visits and series of discussions. Some of the main issues that were faced during the implementation of the project were:

1. **Undulating Topography of the area:** The area proposed for Development of Rajgir Zoo Safari is highly undulating in nature with close contours. This undulating terrain created gaps in proposed drawings and actual work site conditions. Thus, on-site decision in making was necessary at each difficult site, after inspection of the site every time. This stretched the project implementation timeline.

2. **Diversity of Work:** Development of Zoo Safari was highly specialized

work which varied from the Wildlife health and nutrition management to the provision of international level facilities to the tourist for better operation and management of the safari. Thus, at one time, all these works were going on, which required manpower of that extent.

3. **Lack of experience for Construction agency** to carry out wildlife-related work led to constant orientation and sensitization of the construction agency and field workers, to make them understand that life of tourists, animal keepers and animal depends upon the strength and standard of work. Thus, carrying out constant field visits was necessary to ensure that the work is of high standards as per required specifications.

4. **Covid-19** hampered the speed of the development work with the upsurge of Covid-19 since March 2020. It was difficult to get sufficient manpower and ensure a smooth supply of necessary construction material for the work during the first and second waves of Covid.

Rajgir Zoo Safari: Design Strategy & An Overview

Rajgir Zoo Safari, which spreads over around 191 Ha of forest land, is divided into three zones namely, Safari Zone, Reception & Orientation Zone, and Management Zone.

Design Strategy

The Rajgir Zoo Safari has been designed with the vision of the Hon'ble Chief Minister, Bihar, to provide better facilities to the wildlife and for better wildlife management. In this light, efforts have been made to create maintenance-free facilities with a major emphasis on the health and hygiene of animals housed in Rajgir Zoo Safari. Also, safety and security of the animals as well as animal keepers have been given paramount importance with consideration of very minute details in addition to the norms and guidelines established by the Central Zoo Authority. The effort has been made to retain the natural forest

landscape and to give maximum possible space to the wild animals, which makes this safari unique. It also provides near-natural habitat to the wild animals housed here.

Reception and Orientation Zone:

Different factors like possible visitor count at one point, crowd management techniques, cultural and religious importance of the area, natural landscape available, orientation of visitors, single-directional visitor circulation, and future scope of expansion were considered during the development of this zone. Each and every facility is constructed after giving detailed thought about present and future requirements. The facilities were decided to be constructed merging the natural landscape. With the thought of interpreting the visitors especially children at the entry point itself, life-size bronze statues of the animals to be shown inside are depicted in the reception area. Sufficient landscaping area is provided for crowd distribution. Sufficient parking facility has been created to cater the parking demand in the next 20 to 25 years.

The decision of keeping two different plazas was taken for effective distribution of visitors and to avoid overcrowding at any one particular area. Sufficient signages are placed at different locations to help and guide visitors. A sufficient number of washrooms are available for the visitors. Government guidelines for making facilities differently-abled friendly have been followed with letter and spirit while developing these facilities. Other facilities like children's park, open theatre and aviary have been widely spaced. The finishing material like ceiling, flooring, etc. used in creating these facilities are used as per surrounding forest landscape. Each and every aspect of tourist management is being considered while the construction of this visitor zone.

Entrance plaza is kept bigger with maximum facilities. Facilities like Ticket Counter, Interpretation Centre, 180

Degree theatre and washrooms are available in Entrance Plaza. Sufficient use of technology is ensured keeping in view the children and their liking towards audio-visual means of learning. Facilities like Animal information videos, Digital butterfly zone, Shapatha Stambha, Rotoscope, 180-degree theatre and online ticket booking were included as a part of IT facilities that are made available to the visitors.

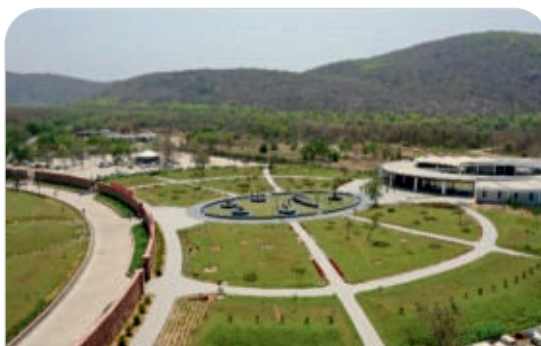
For effective tourist management, the state-of-the-art control room has been developed for better control and coordination among staff as well as for better tourist and wildlife management. The complete area is under CCTV surveillance to ensure effective crowd management. Multiple communication methods in the form of intercom, Wireless base stations are created to coordinate with this control room. Facility of Zonal Public announcement for different Zones is provided for dedicated announcements and public address.



Aerial view of Reception and Orientation Zone



Ticket Counter with corridor covered with tensile structure



Reception Area



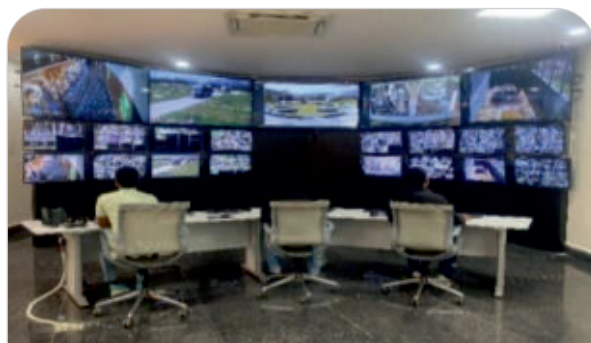
Digital Butterfly Zone

The entertainment of the tourists has also been taken care of by developing a 180 Degree theatre, which is itself a unique feature of Rajgir Zoo Safari. Facilities like Children park and open theatre are also provided in the reception area for kids.

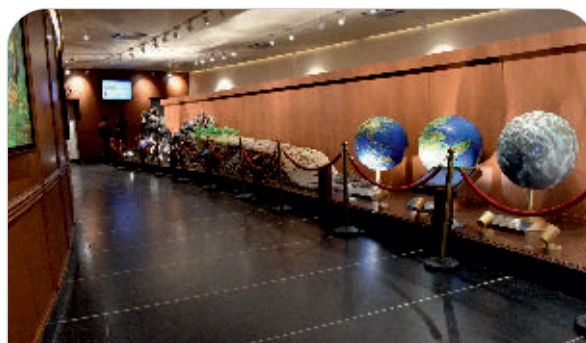
The interpretation center not only gives information about the animals housed in the safari, but it also gives information about other concepts related to the evolution of the earth, the evolution of human beings, as well as the theory of ecological succession in addition to the animal information. The poster series on the wall gives information about the Forest, Wildlife, Forest and Human co-existence, Hazards like habitat fragmentation, forest fires, oil spills and its effect on wildlife, Effect of climate change and Role of Forest department in mitigation and conservation role.

Safari plaza is planned in such a way that all the tourists are oriented before boarding the safari buses. Thus, an orientation room is developed, where basic information about the animals housed in the safari and facilities being provided as communicated along with dos and don'ts to be followed during the safari. There is one-way circulation of safari bus with different pickup and drop points.

The safari vehicles used in Rajgir Zoo Safari are specially modified vehicles. These are AC vehicles with enlarged viewing glass in sides, which help tourists sitting on aisle seats sufficient visibility. Tourist safety has been kept at the highest preference while modifying the vehicles. CCTVs have been installed in each vehicle for constant vigil on tourists. TV screens along with PA systems have been provided to give information to tourists. Specially trained guides are available in each bus to give information about the animals and to answer queries of visitors.



Control Room



Interpretation Center



Orientation Hall



3D 180 Degree Theatre



Interpretation Center



The Safari Vehicles

Safari Zone:

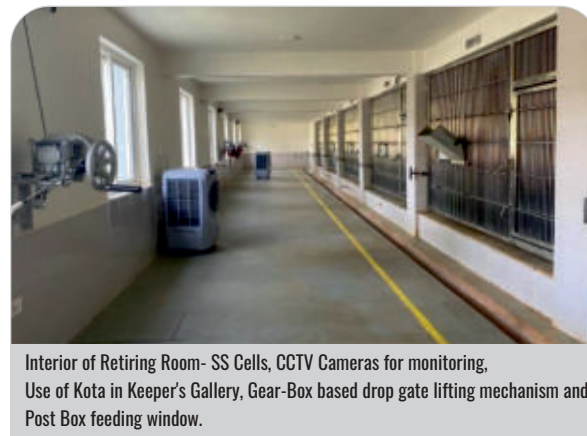
Rajgir Zoo Safari has five different safaris namely Herbivore, Bear, Leopard, Tiger, and Lion Safari. Enclosures of all the animals including their retiring rooms have been constructed as per CZA norms and guidelines and have been widely appreciated by CZA officials as well as other wildlife experts working in in-situ and ex-situ conservation of wild animals.



This safari has a natural forest which has the advantage of providing near-natural habitat to wild animals and hence can be seen in good health and vigor. Thus, to capitalize on this resource, strict efforts have been made to make minimum intervention in alteration of the natural vegetation and terrain while carrying out the construction work.

The animal displayed in Herbivore Safari includes Sambhar, Chital, Hog Deer, Barking Deer and Blackbucks. There are sufficient numbers of Sloth Bear, Leopards as well as Tigers and Lions for better sighting of these wild animals.

Considering the extreme climatic conditions of Rajgir and for better wildlife management, a sufficient number of windows and ventilators have been ensured for proper ventilation and sunlight in the retiring rooms. UPVC Glass windows have been used for proper sunlight. It has been made eco-friendly with the use of Solar rooftops and solar water pumps to negate the dependency on the regular power supply.



Use of 304-grade mat-finished stainless steel to fabricate cells, use of rough-surfaced Kota stone on flooring for easy cleaning, U-shaped open drainage for water-free drain, specialized post-box style feed windows with sliders, specialized gear box-based drop gate lifting mechanism with the facility of break system, Stainless steel transportation cages, portable squeeze cages, preinstalled weighing bridges in each retiring room, separate Keeper room with CCTV monitoring facility, store room etc are some of the best practices adopted while developing the retiring rooms for animal well-being as well as to ensure the safety of animal keepers.

Sufficient numbers of Kraal have been provided as per CZA guidelines with evergreen trees for shade, bigger ponds and Wooden Machans. The area of the Kraals has been kept sufficiently larger for animals to stroll and to adjust the big trees that were already present in the area. Wastewater treatment facility is installed in each retiring room to reuse the water for plantation.

The specially developed Tata GI chain link and GI poles have been used in enclosure boundary to make it maintenance-free and to avoid the problem of breach of enclosure due to rusting etc. The roads are kept sufficiently wide so that any emergency situation like rescue or fire emergency can be easily handled. Most of the roads are murrum roads to maintain the feel of natural wildlife safari.

The double gates are designed with sufficient length, width and height. The gates are motor operated. The operator room has glass window on three sides for better visibility. CCTV monitoring is carried out to keep constant watch on animal movement near double gates. Additional emergency gate is provided in each enclosure.

Habitat enrichment work of enclosures as per the special need of the particular wild animal has been carried out. Works like plantation of mixed species and fruit-bearing species, removal of weeds, creation of new grasslands and maintenance of old grasslands are being carried out in the herbivore enclosure. The widening and enrichment of water bodies has been ensured along with soil and moisture conservation work to reduce the speed of water and to retain maximum rainwater in natural ponds.



Outer Boundary along with Enclosure Boundary and Roads.



Larger Kraals for animals.



Herbivore Double Gate with theme of "Nalanda Ruins".



Kraal with shade, Machan and pond.



Natural Pond in Herbivore Safari with check dam

Wildlife Healthcare and Nutrition Facilities

Generally, in zoos, the management zone of the zoo is a neglected part being out of visitor's reach. While construction of Management Zone of Rajgir Zoo Safari, equal importance is given in deliberation and thought process as is given for Safari and visitor zone. The healthcare facilities developed here namely Wildlife Hospital, Commissary, Quarantine facility and Post Mortem Hall, were designed based on its effective utilization and keeping in mind its impact on the health of wildlife. The locations of these facilities are such that they are neither too far nor too close to each other. Factors like sunlight, ventilation, ease of operation, and maintenance are considered while developing management zone facilities.



Aerial view of Hospital Building

Hospital:

Rajgir Zoo Safari has a state-of-the-art hospital spread in around 785 sq. mtrs. with modern machineries for diagnostic, treatment and necessary facilities to carry out any major operation.

The hospital building is divided into two parts with both parts facing each other. One part is of the animal treatment section comprising the Operation theatre, XRoom, Observation room, Ultra sound room, Nursery for Hand rearing, Cells and Kraals to be used to house inpatient animals. These rooms are interconnected to each other for easy movement of wild animals for diagnostic and treatment. The other part of the hospital is concerned with the administrative part of the hospital with facilities like Lab, Pharmacy, Staff Rooms, and Store Rooms. These facing wings of the hospital will help in easy monitoring of the animals under treatment in the hospital as well as hand-rearing in the Nursery. CCTVs have been installed in all rooms especially in-patient ward cells and Kraals to keep 24x7 watch on animals being treated thus avoiding unnecessary human interaction with them while monitoring of animal under treatment.

Sufficient greenery is ensured in and around the hospital. The orientation of the Hospital building is kept in such a way that sufficient natural sunlight is provided to the animals kept in the kraal. Also, better aeration in the building has been ensured.

The medical equipment and facilities available in Wildlife Hospitals are of international standards and have been seen very helpful in the treatment of animals especially old aged and rescued injured animals.



Kraal facility (East facing) in Hospital Building

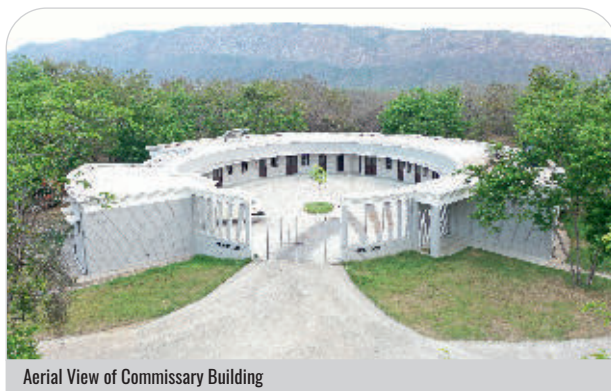


Commissary:

Commissary building of the Rajgir Zoo Safari has separate Veg and Non-veg sections and they have been separated from each other within the same building with sufficient distance between the two.

The Non-veg section has a facility of cold storage of feed, along with beef preparation room and fish and chicken preparation room. Also, veg section store has sufficient space to store minimum 15 days of ration in case of any emergency situation. The veg section of the commissary has separate mash store, fruit, vegetable and dry ration store, Kitchen along with staff room and office.

There is a separate weighing bridge for weighing of the feed brought by heavy vehicles. Also, grass storage shade has also been constructed at a distance from commissary to avoid rat menace. The facility of entry of heavy vehicles is also provided in the central courtyard of the commissary. Also, a closed delivery vehicle is used for supply of non-vegetarian food material.



Aerial View of Commissary Building



Quarantines and Postmortem:

The separate quarantine facilities for Herbivores and Carnivores have been created inside management zone to cater transferred as well post-treatment recovery of the animals during their prescribed quarantine period.

A separate postmortem facility with sufficiently large postmortem room as well as sample collection room has been constructed along with a glass wall facing the sunlight. A sufficient number of windows have been provided to ensure proper aeration of the room to keep the postmortem room dry.



Aerial view of Carnivore Quarantine



Administrative Block and Emergency response measures:

The administrative block with conference hall and a separate building for research and monitoring work has been strategically located so that officials can reach reception zone and other facilities of management zones like hospital, commissary as well as safari zone in minimum time for their routine management work as well as in case of any emergency. Dedicate fire tenders, high rise emergency vehicle and ambulance along with rescue vehicle are procured by safari management to reduce response time in case of emergency and to reduce the impact of any sort of emergency.

Other facilities like emergency response equipment, electrical and solar systems are in place according to need. Waste disposal systems in form of Vermi compost units, waste water treatment plants are operational and bio-medical waste is being disposed of through the authorized agency for incineration of these waste.



Present and Future:

It is satisfying to see that we are able to operate and maintain this safari not only as per our expectations but it is also being appreciated by local as well as international tourists visiting Rajgir Zoo Safari.

Rajgir Zoo Safari is providing employment to more than 500 families directly and much more indirectly. New hotels and restaurants are coming up after the start of Zoo Safari. The greenery of the area is increasing and positive changes have been seen in the ecology of the area, which is evident from the fact that Sal regeneration can be seen on the foothills and is increasing uphill eventually.

The main challenge for any high standard facility, once created, is its effective maintenance and operation. The response of the visitors to Rajgir Zoo Safari has been tremendous and the responsibility now shifts to keeping these facilities neat, clean and operational. More than two thousand visitors along with school children visit Zoo Safari premises every day. Thus, the team of Rajgir Zoo Safari is working constantly to live up to the expectations of visitors. The development of facilities like Souvenir shop etc. is under process. Such facilities need constant up-gradation to come true to the expectations of visitors.

Apart from visitor management, Rajgir Zoo Safari is in nascent stage considering wildlife management part. Future plan involves active Lion and Tiger breeding efforts to supplement in-situ conservation initiatives of Bihar Government. Creating satellite facility of One Horned Rhinoceros and Ghariyal Breeding Conservation Centre of Sanjay Gandhi Biological Park, Patna is in pipeline. Efforts are needed for carrying out research and outreach activities to convert itself into center of excellence in Wildlife Research.

The Government of Bihar is committed and working for the conservation and protection of the natural resources of the State with active participation of the people. The Rajgir Zoo Safari is yet another step of the Government of Bihar for awareness and education of the masses to conserve, protect, preserve and live in harmony with nature.

Dr. Gopal Singh, IFS

Regional Chief Conservator of Forest, Patna

-cum-Chairman, Project Monitoring Committee, Rajgir Zoo Safari.





CONTENTS

1	Report of the Officer-in-charge	1
2	History of the Zoo	3
3	Vision	4
4	Mission	4
5	Objective	5
6	About us	7
7	Organizational Chart	8
8	Human Resources	9
9	Capacity Building of the zoo personnel	10
10	Zoo Advisory Committee	11
11	Health Advisory Committee	12
12	Statement of Income and Expenditure of the Zoo	12
13	Daily Feed Schedule of Animals	13
14	Vaccination Schedule of Animals	15
15	De-worming Schedule of Animals	16
16	Disinfection Schedule	16
17	Health Check-Up of Employees for Zoonotic Diseases	17
18	Development Works Carried Out during the year	18
19	Education and Awareness programmes during the year	31
20	Important Events and happenings	32
21	Seasonal special arrangements for upkeep of animals	39
22	Research Work Carried Out and Publications	45
23	Conservation Breeding Programme of the Zoo	45
24	Animal Acquisition / Transfer / Exchange During the Year	45
25	Rescue and Rehabilitation of the Wild Animals Carried Out by the Zoo	47
26	Annual Inventory of Animals	48
27	Mortality of Animals.	51
28	Status of the Compliance with conditions stipulated by the Central Zoo Authority	51
29	List of Free-Living Wild Animals Within the Zoo Premises	51
30	Annexure – “A”	54
31	Annexure – “B”- Facilities available in Safari and Management Zone	57

1 REPORT OF THE OFFICER-IN-CHARGE:



Hemant Patil, IFS
Director,
Rajgir Zoo Safari, Nalanda

It is a matter of great pleasure that, despite numerous challenges and difficulties, the development of the Rajgir Zoo Safari has been successfully completed this year to the satisfaction of the State government, culminating in its inauguration and dedication to the public by the Hon'ble Chief Minister of Bihar on February 16, 2022.

The year 2021-22 has been a period of various achievements for Rajgir Zoo Safari, with pivotal and significant milestones. The initial phase of this year was a dreadful period when the entire world was facing Covid-19. With proper precaution and following the protocols and guidelines issued by the government from time to time, the transfer of all the wild animals was successfully carried out as per approved collection plan of Rajgir Zoo Safari, after due approval for animal transfer from Central Zoo Authority, New Delhi. The transfer process was meticulously planned and executed, ensuring the safety and well-being of the animals throughout the transition. Even though sufficient training was imparted to the personnels in wildlife management at Sanjay Gandhi Biological Park, Patna, being a newly developed Zoo, it was very challenging to learn and interpret the animal behavior and to acquaint ourselves with their daily routine. It was also challenging to see whether these animals adopt to the new area and the new concept of Safari, where they are getting larger enclosures. It was very heartening to see that all the animals adapted to the conditions and to the larger enclosure created in their natural habitat. Significant improvement was also seen in their health. After rigorous efforts, tough days and many sleepless nights, after repeated consultations with keepers and experts from Patna Zoo, we are very satisfied that we have achieved this huge task of learning ex-situ wildlife health and nutrition management. I must congratulate my Veterinarian Dr. Dalip Kumar Baitha, Range officer of Forests Arvind Kumar, Rakesh Kumar and all the field staff that due to their hard work and dedication, we could achieve this difficult task effectively within stipulated time.

During this year we also completed development of all the visitor facilities well before its inauguration. There were huge expectations from the State Government to develop this wildlife Safari of international standards. With meticulous planning and execution, various amenities were established to enhance the overall experience for visitors. The completion of these facilities has significantly contributed to the comfort and convenience of our visitors, further augmenting the appeal of Rajgir Zoo Safari as a premier destination for wildlife enthusiasts. Along with basic facilities like parking areas, ticket counters, restroom facilities, pathways, and seating arrangements, various other facilities were provided in the reception zone of the safari area, which makes this safari unique. The concept of using audio-visual mode in the interpretation center, orientation center, 180-degree theatre and at shapath stambha are appreciated by the tourist specially by the students. The specially modified vehicles with larger view were also appreciated by the tourist especially by those tourists who has visited other safaris in the country. We can say that we have almost fulfilled the expectations of the State government.

The Rajgir Zoo Safari was dedicated to the public by Hon'ble Chief Minister, Bihar on 16th February, 2022 and its operation started on 20th February 2022. Being a new concept and being first Zoo Safari of such kind in the state of Bihar, it was a matter of challenge for the Zoo Safari administration to operate these tourist facilities effectively. There has been a massive response from tourists since its first day of operations. Tourist came not only from Bihar, but from different states of the county to

see this safari. Seeing humongous response from the visitors from all over Bihar, emphasis was placed on effective crowd management to ensure a seamless and enjoyable experience for all visitors. Complete team of Rajgir Zoo Safari worked tirelessly under the guidance of Dr. Gopal Singh, Regional Chief Conservator of Forest, Patna to maintain order and safety by using the state-of-the-art control room by managing the crowd efficiently.

Rajgir Zoo Safari is blessed with vast floral, faunal, avifaunal and butterfly biodiversity with picturesque hills from all sides. Thus, the concept of seeing the wild animals in their near natural habitat has got tremendously good response from the nature and wildlife appreciators.

We would like to express our heartfelt gratitude to Sh. Nitish Kumar, Hon'ble Chief Minister, Bihar whose vision and constant guidance has been driving force in conceptualization and development the Rajgir Zoo Safari with facilities of international standards. We express our deepest regards to Hon'ble Minister, Department of Environment, Forest and Climate Change, Bihar for his constant support and guidance.

We would also express our sincerest regards to Sh. Dipak Kumar Singh IAS, Principal Secretary, Department of Environment, Forest and Climate Change, Bihar; Shri Ashutosh IFS, Principal Chief Conservator of Forest (HoFF), Bihar; Shri P K Gupta IFS, Additional Principal Chief Conservator of Forest (Wildlife)-cum-Chief Wildlife Warden, Bihar, all officials of Bihar Forest Department and Sanjay Gandhi Biological Park, Patna for their constant and continuous support and guidance. We would also like to express our deepest regards to Dr. Rameshwar Singh, Vice Chancellor, Bihar Animal Sciences University, Patna; Dr. J K Prasad, Dean, Bihar Veterinary College, Patna, and all the staff and faculty of Bihar Veterinary College, Patna for their continuous technical assistance and cooperation.

Our heartfelt thanks to Dr. D. N. Singh, retd IFS who has been a constant source of inspiration. His undisputed knowledge and experience in the field of Designing and Management of Zoo and his words of wisdom has played key role in development and scientific management of this Safari.

The continuous and unconditional support, guidance and motivation of Dr Gopal Singh, IFS, Regional Chief Conservator of Forests, Patna has been a major driving force behind all the work done in Rajgir Zoo Safari and in creating this safari of international standards. We express our heartfelt gratitude to Sir.

We sincerely express our gratitude to Central Zoo Authority, the MoEF&CC for their kind support and cooperation.

We thank all our esteemed zoo visitors for their continued love to Rajgir Zoo Safari. Their feedback helps us make ourselves better.

Rajgir Zoo Safari is all about teamwork. We would like to extend our sincerest gratitude to Dy Director, Veterinary Officers, Range Officers and all the staff of Rajgir Zoo Safari for their discipline, dedication and hard work.

Hemant Patil

Director, Rajgir Zoo Safari, Nalanda

2 HISTORY OF THE ZOO

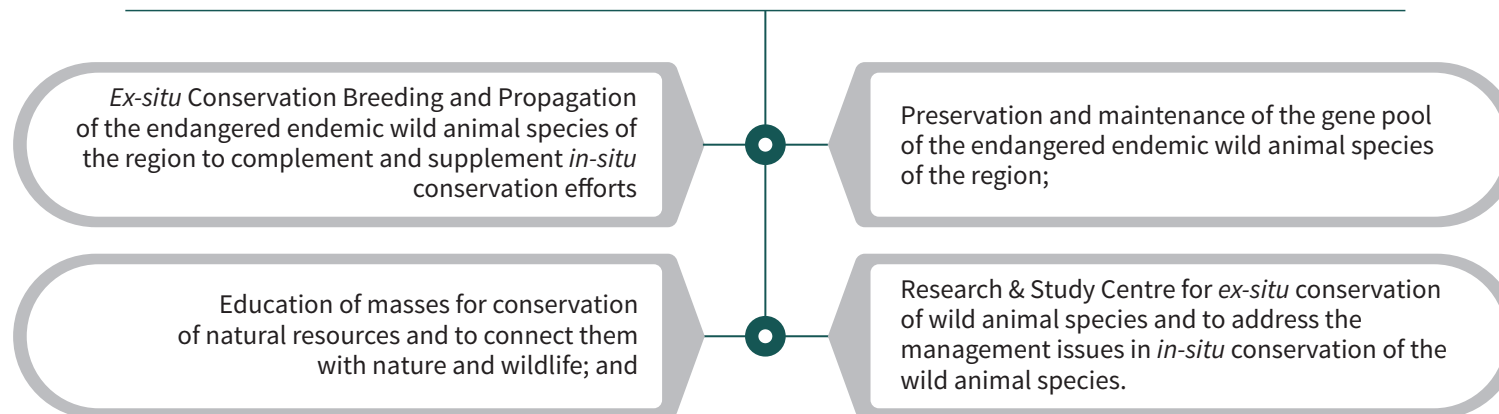
The Rajgir Zoo Safari is first Zoo Safari in the state of Bihar. It has been established in Rajgir Wildlife Sanctuary area by extending the earlier Mrig Vihar. After getting necessary approvals for its establishment from National Board of Wildlife in March 2015, it got its in-principal approval from Central Zoo Authority in May 2017. On 16th December 2020, Rajgir Zoo Safari got recognized as a Zoo by Central Zoo Authority and has been opened for public since 20th February 2022 after its inauguration by Hon'ble Chief Minister, Bihar on 16th February, 2022.

Spread in 191.12 hectare of area and blessed with vast floral and faunal biodiversity, currently there are five different safaris in Rajgir Zoo Safari namely, Herbivores Safari, Bear Safari, Leopard Safari, Tiger Safari and Lion Safari. Rajgir Zoo Safari houses 10 species of wild animals namely Asiatic Lion, Royal Bengal Tiger, Leopard, Sloth Bear, Sambar, Spotted Deer, Hog Deer, Barking deer, Blackbuck and Nilgai.



3 VISION

The Rajgir Zoo Safari has been set up by the Government of Bihar as a scientific institution for



4 MISSION

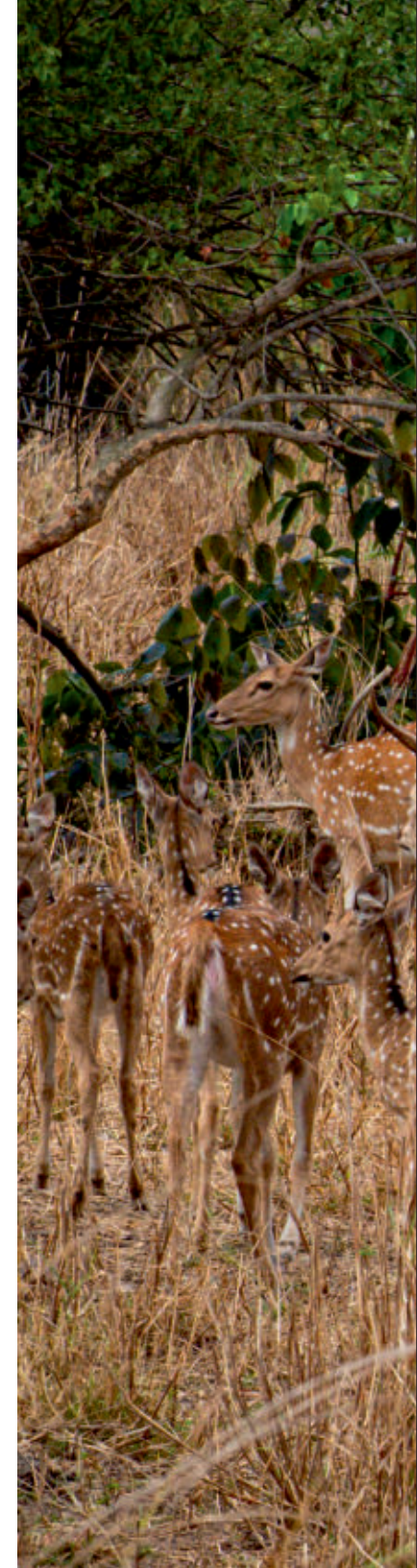
THE MISSION OF THE RAJGIR ZOO SAFARI IS

To complement, supplement and strengthen the national and international efforts for *in situ* conservation of endangered wild animal species with the knowledge, practices, resources and support from *ex-situ*;

To develop a scientific institution for research and study on captive wild animal species (*ex situ*) in the field of wild animal ecology, biology, physiology, behavior, housing, feed & nutrition, enrichment, veterinary health care etc. to aid in *in situ* scientific management of wild animal;

To display visitors the captive wild animal species in their natural habitat, while maintaining their genetic diversity and biological diversity of the locality; and

To develop amongst the masses compassion, empathy and caring attitude towards the wild animal species and encourage and motivate them to work for and support the cause of conservation.



5 OBJECTIVES

The main objective of the Rajgir Zoo Safari is to complement, supplement and strengthen the national efforts in conservation of the rich biological diversity of the country, by conservation and preservation of the national and regional endangered species of the wild animals with active support, participation and involvement of the masses in the conservation actions, activities and programmes.

The aforesaid objective of the Rajgir Zoo Safari would be achieved through implementation of the following measures:

WILD ANIMAL HOUSING & DISPLAY:

- To display and house captive wild animals in a safe, secure, proper and appropriate species-specific natural habitat or near natural environment.
- for housing and upkeep of the captive wild animals.
- To provide the captive wild animal species appropriate and proper species-specific housing, with special care and emphasis on their adequate and sufficient feed and nutrition, proper health care, hygienic & clean environment, adequate space to display their various natural behaviors, appropriate enrichment to fill up the gaps in their natural activities and behavior compared to their natural habitat, their natural social groupings & opportunities for reproduction etc.
- To give utmost importance to the animal welfare measures.



CONSERVATION BREEDING OF ENDANGERED SPECIES:

- *Ex-situ* captive breeding of endangered wild animal species under a planned conservation breeding programme with special focus and emphasis on the endemic species of the region and their future requirements in the wild.
- Captive breeding programme for endangered species to be carried out in accordance with the protocol for rehabilitation of this species in the wild, if required, to supplement the wild population.
- Captive breeding, housing and upkeep of the endangered wild animal species to be carried out in a manner with least human imprints on them to ensure their adaptation and safety in the wild habitat, as and when released in the wild.
- Ensure and maintain scientifically laid down genetic diversity in the captive population of the wild animal species housed.

RESEARCH & SCIENTIFIC STUDY:

- Establish and maintain a modern, sophisticated, and well-equipped facility for scientific research and studies on the wild animal species in ex situ conditions to enhance the scientific knowledge about ecology, biology, physiology, behavior, housing, feed & nutrition, enrichment, veterinary health care of wild animal species to aid in scientific management and conservation of wildlife.
- Carry out applied research and studies in collaboration with the in-situ managers to address their field problems and issues to assist them in the scientific management of the wild animal species.

CONSERVATION EDUCATION AND AWARENESS:

- Conservation education, awareness and interpretation programme should aim to target the general public from different strata and sections of the society, covering all age groups and belonging to diverse backgrounds and groups.
- Conservation education, awareness and interpretation programme should aim to enhance the knowledge of visitors and make them aware about necessity and importance of conservation, preservation and sustainable use of natural resources, including floral and faunal diversity and importance of maintaining the ecological balance.
- Conservation education, awareness and interpretation programme should aim to develop compassion and empathy for wild animals among the visitors to inspire them to actively participate and join the programmes and efforts for conservation of the natural resources.
- Provide visitors all necessary and basic facilities to ensure comfortable, hassle-free and satisfying visit.

RESCUE AND REHABILITATION:

- For rescue of the wild animal species, provide species-specific appropriate and proper equipment & accessories for their capture, restrain and transportation with minimum stress and injury to them and they should be safe and secure for the human beings.
- Provide appropriate, adequate and proper species-specific housing, upkeep and veterinary care facility for their care in captivity and rehabilitation in the wild.
- Arrange enough resources, space and facility to cover all rescued wild animal species that may be old, infirm, sick, injured, orphaned, seized, stray out of their natural habitat or problematic that cause human-wild animal conflict.

6 ABOUT US

BASIC INFORMATION ABOUT THE ZOO

Name of the Zoo	Rajgir Zoo Safari, Nalanda
Year of Establishment	2017
Address of the Zoo	Rajgir Zoo Safari, Rajgir, Dist: Nalanda, Bihar. Pin code – 803 116
State	Bihar
Telephone Number	8087211645
Fax Number	-
E-mail address	rajgirzoosafari@gmail.com
Website	https://rajgirzoosafari.bihar.gov.in
Distance from nearest	Airport: Patna-102 Km, Gaya-67 Km Railway Station: 4.4 Kms. Bus Stand: 3.4 Kms.
Recognition Valid upto (Date)	06.12.2022
Category of Zoo	-
Area (in Hectares)	191.12 hectares
Number of Visitors 2021-22 (Financial Year from 16 Feb 2022 to 31st March 2022)	Total Visitors: 33,321
Visitors' Facilities Available in Zoo	<ul style="list-style-type: none"> ■ Interpretation Centre with audio visuals ■ Orientation Hall ■ Specially modified Safari Vehicles with larger view and Guide in every bus. ■ 180 degree theatre with 180 seating capacity ■ Selfie point ■ Parking ■ Purified Drinking Water Facility ■ Wheel chairs and ramps at entry/exit ■ Washroom Facility ■ Battery Operated Vehicles ■ Signages ■ Visitor sheds ■ Benches ■ Ambulance ■ First Aid Kit ■ Children's Park ■ Shapath Stambh for adopting eco friendly lifestyle- Touch Screen based
Weekly Closure Day of the Zoo	Monday

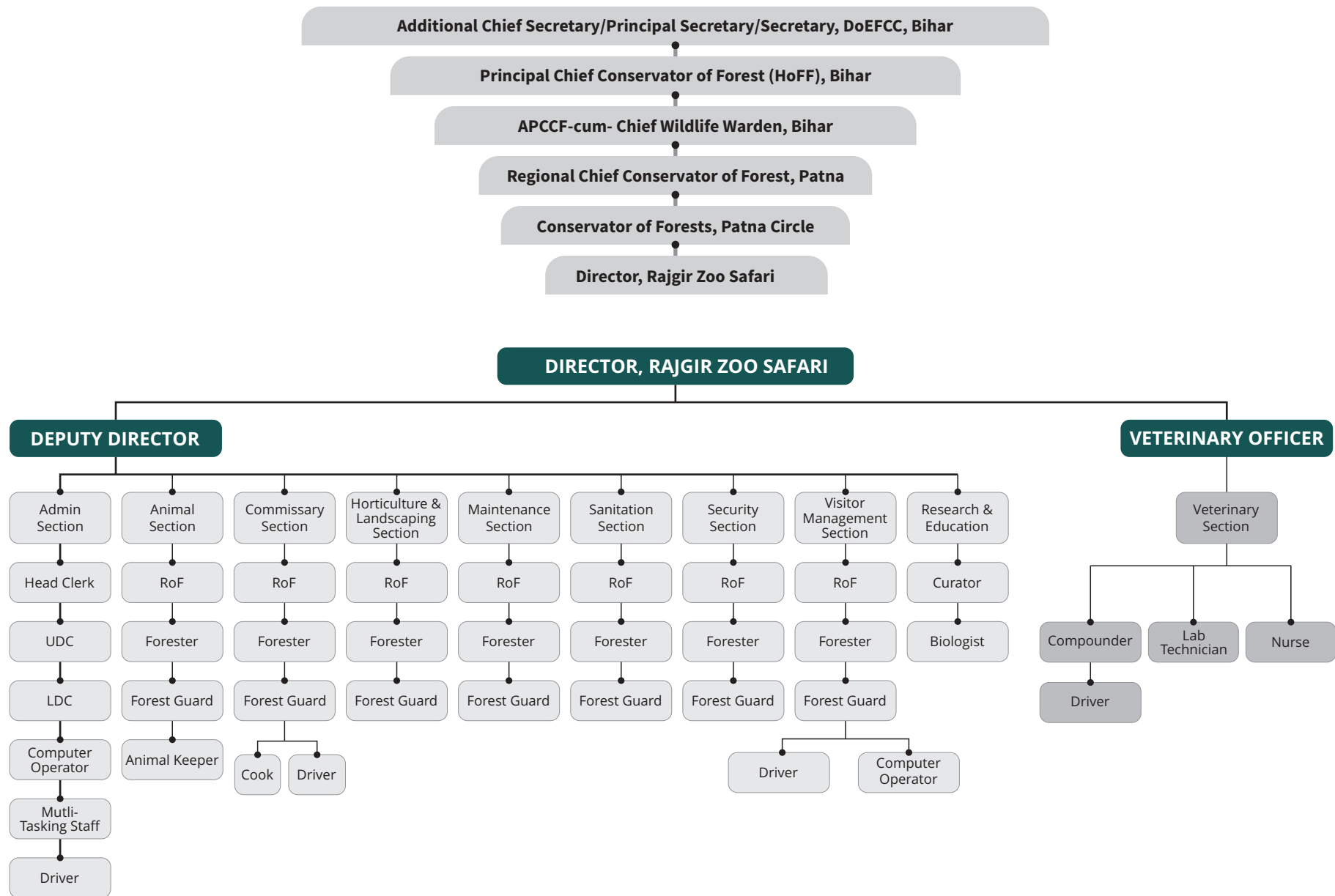
MANAGEMENT PERSONNEL OF THE ZOO

Name with designation of the Officer in-charge	Shri Hemant Patil, IFS Director, Rajgir Zoo Safari, Nalanda.
--	--

OWNER / OPERATOR OF THE ZOO

*Name of the Operator	Principal Secretary to Govt of Bihar, Dept. of Environment, Forest & Climate change, Govt. of Bihar
Address of the Operator	Dept. of Environment, Forest & Climate change, Sinchai Bhawan, Patna.
Contact details/ Phone number of Operator	0612-2217713
E-mail address of Operator	efd-bih@nic.in

7 ORGANIZATIONAL CHART



8 HUMAN RESOURCES

8.1 OFFICERS/OFFICIALS WORKING IN RAJGIR ZOO SAFARI, NALANDA DURING THE YEAR 2021-22

Sl. No.	Designation	No. of Sanctioned Post	Names of the incumbent
1.	Director	1	Mr Hemant Patil, IFS
2.	Deputy Director	1	Mr Subodh Kumar Gupta, Mr Ambika Sharan Sinha
3.	Veterinary Officer	2	Dr Dalip Kumar Baitha
4.	Range Officer of Forest	3	Mr Arvind Kumar, Mr Rakesh Kumar

8.2 PERMANENT STAFF OF RAJGIR ZOO SAFARI DURING THE YEAR 2021-22

Sl. No.	Designation	No. of Sanctioned Post	Names of the incumbent
---------	-------------	------------------------	------------------------

Administrative Staff

1.	Head Clerk	1	—
2.	Upper Division Clerk	1	—
3.	Lower Division Clerk	2	Mr Kumar Anshu, Mr Amit Kumar Sinha

Safari Zone

1.	Range Officer of Forests	1	Mr Rakesh Kumar
2.	Forester	4	Mr Ravindra Kumar
3.	Forest Guard	18	Mr Anus Mansuri, Mr Bipin Kumar, Ms Ragini Kumari, Mr Sunil Kumar Suman, Mr Ved Vyas Kumar.
4.	Animal Keepers	30	Being Managed by Daily Wage Labours

Management Zone

1.	Range Officer of Forests	1	Mr Arvind Kumar
2.	Curator	1	—
3.	Biologist	1	—
4.	Forester	2	—
5.	Forest Guard	4	Mr Pappu Manjhi, Ms Pooja Kumari, Mr Surya Prakash
6.	Compounder	4	Being Managed by Daily Wage Labours
7.	Nurse	1	—
8.	Lab Technician	1	Being Managed by Daily Wage Labours

Tourist Zone

1.	Range Officer of Forests	1	Mr Arvind Kumar (In-charge)
2.	Forester	4	—
3.	Forest Guard	13	Mr Amit Kumar, Mr Bawan Kumar,

*Please give above mentioned information in respect of all zoo personnel, from the Officer in-charge upto the Animal Keeper.

9 CAPACITY BUILDING OF ZOO PERSONNEL

Sl. No.	Name and designation of the zoo personnel	Designation	Subject matter of Training	Period of Training	Name of the Institution where the Training attended
1.	Hemant Patil, IFS	Director	Online Compulsory Training Programme of “Wildlife Forensics and Crime Control”	21st October 2021 to 22th October 2021	College of Veterinary Sciences, Assam Agricultural University, Guwahati





10 ZOO ADVISORY COMMITTEE

It is yet to be constituted.

11 HEALTH ADVISORY COMMITTEE

a. Date of constitution: - 31.07.2020

b. Member:-

- (i) Dr. A. A. Khan, Former Dean cum Principal, Ranchi Veterinary College, Patna, President, Animal Health Advisory Committee, Rajgir Zoo Safari, Nalanda Bihar. — **(President)**
- (ii) Dean, Bihar Veterinary College, Patna.
- (iii) Director, Institute of Animal Health & Production, Bihar, Patna.
- (iv) Dr. Anup Rai, Retd. Animal Husbandry Officer, Patna.
- (v) Dr. K.P. Mallik, Retd. Sr. Scientist, I.V.R.I., Izzatnagar, Raebareilly.
- (vi) Dr. Alka Sharan, Retd. Director, Institute of Animal Health & Production, Bihar, Patna.
- (vii) Dr. Ajeet Kumar, Retd. Veterinary Officer, Sanjay Gandhi Biological Park, Patna.
- (viii) Dr. Ramesh Tiwary, Assistant Professor, Surgery & Radiology Department, Bihar Veterinary College, Patna.
- (ix) Dr. Gyandeo Singh, Assistant Professor, Surgery & Radiology Department Bihar Veterinary College, Patna.
- (x) Dr. Pallav Shekhar, Assistant Professor, Medicine Department, Bihar Veterinary College, Patna.
- (xi) Dr. Kaushal Kumar, Assistant Professor, Pathology Department, Bihar Veterinary College, Patna
- (xii) Dr. Manoj Kumar, Assistant Professor, Microbiology Department, Bihar Veterinary College, Patna.
- (xiii) Dr. Farid Ahmad Khan, Homeopathic Doctor, Patna.
- (xiv) Veterinary Officer, Rajgir Zoo Safari, Nalanda. — **(Member Secretary)**

c. Dates on which Meetings held during the year : 29-08-2022

12 STATEMENT OF INCOME AND EXPENDITURE OF THE ZOO

Year	Total Revenue	Total Expenditure
2021-22	79,48,320	73,18,36,188

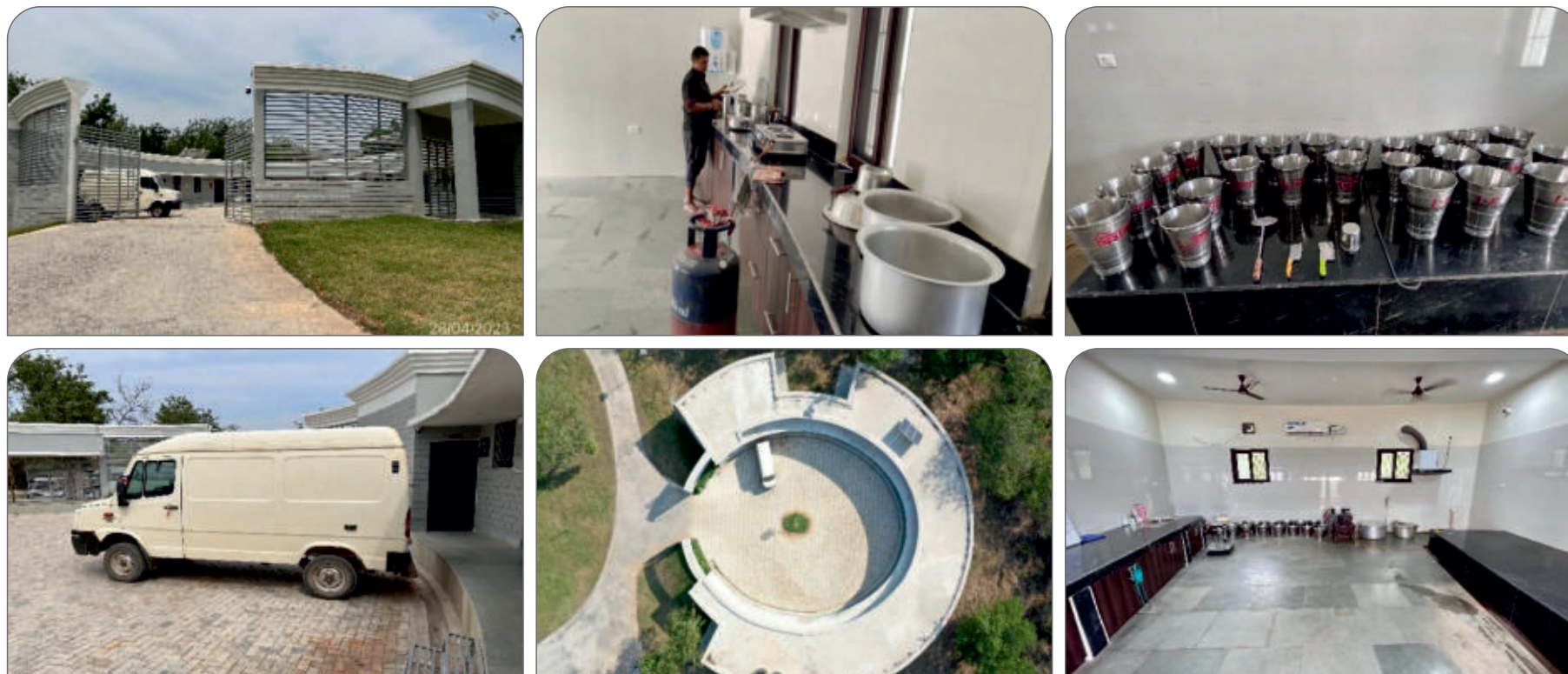
13 DAILY FEED SCHEDULE OF ANIMALS

Sl. No.	Species	Feed Item	Quantity (Unit - Kg)		Day of Fasting
			Winter	Summer	
1.	Asiatic Lion	Beef with bone (Male)	10-11	9-10	Monday
		Beef with bone (Female)	8-9	7-8	
2.	Royal Bengal Tiger	Beef with bone (Male)	10-12	9-10	Monday
		Beef with bone (Female)	10-11	8-9	
3.	Leopard	Boneless Beef (Male)	2.5-3.5	2-3	Monday
		Boneless Beef (Female)	2-3	2-2.5	
4.	Sloth Bear	Roti (Wheat flour)	0.4-0.5	0.4-0.5	Monday
		Pulses (Pigeon pea, Moong, Masur Dal in form of cooked Dal)	0.2	0.2	
		Seasonal Fruits & Green Vegetables (Spinach, Beans, Cabbage)	1.250	1.250	
		Groundnut (Including enrichment in enclosure)	0.600	0.600	
		Kheer (Made of Rice, Milk and Jaggery/Sugar)	Rice- 0.300 Kg Milk-1.5- 2 Litre Jaggery- 0.100 kg	Rice- 0.300 Kg Milk-1.5- 2 Litre Jaggery- 0.100kg	
		Honey	0.015-0.020	0.015-0.020	
		Mineral mixture	0.030	0.030	
5.	Sambar	Deer Mash	1.125	1.125	No Fasting
		Green Fodder	10	10	
		Wheat Bhusa	2	2	
6.	Spotted Deer	Deer Mash	0.5	0.5	No Fasting
		Green Fodder	2	2	
		Wheat Bhusa	0.5	0.5	
7.	Hog Deer	Deer Mash	0.250	0.250	No Fasting
		Green fodder	3	3	
		Wheat Bhusa	0.250	0.250	
8.	Barking Deer	Deer Mash	0.250	0.250	No Fasting
		Green Tree Leaves/ Green fodder	2-2.5	2-2.5	
		Wheat Bhusa	0.150	0.150	

Sl. No.	Species	Feed Item	Quantity (Unit - Kg)		Day of Fasting
			Winter	Summer	
9.	Black Buck	Deer Mash	0.250	0.250	No Fasting
		Green fodder	2.5-3	2.5-3	
		Wheat bhusa	0.3	0.3	
10.	Blue Bull (Nilgai/ Ghodparas)	Deer Mash	1.25	1.25	No Fasting
		Green fodder	10	10	
		Wheat bhusa	2	2	

* The feed per animal varies as per age, sex, physical and medical condition of the animal. Special diet is provided for ageing animals, sub-adults and young ones. During Summer, special feed is provided for bear and herbivores like provision of Watermelon etc. If green fodder is not available, it is replaced with increase quantity of Wheat Bhusa, choker and Deer mash.

COMMISSARY BUILDING AND FACILITIES FOR FOOD PREPARATION AND DELIVERY



14 VACCINATION SCHEDULE OF ANIMALS:

Vaccination Schedule of Animals										
S. No.	Species	Disease Vaccinated for	Name of the Vaccine	Dosage	Quantity	Periodicity	Remarks	Month		
1.	Lion	Feline Pan-Leukopenia & Rhinotracheitis	Felocell	1 ml	1	Annually	Month of vaccination is different for different animals.			
		Trypanosomiasis	Triquin	As per body weight of animal	1	Biannually				
		Cannine Distemper	Purevax	1 ml	1	Annually				
2.	Tiger	Feline Pan-Leukopenia & Rhinotracheitis	Felocell	1 ml	1	Annually			Month of vaccination is different for different animals.	
		Trypanosomiasis	Triquin	As per body weight of animal	1	Biannually				
3.	Leopard	Feline Pan-Leukopenia & Rhinotracheitis	Felocell	1 ml	1	Annually				
		Trypanosomiasis	Triquin	As per body weight of animal	1	Biannually				



15 DE-WORMING SCHEDULE OF ANIMALS:

De-worming Schedule of Animals				
S. No.	Species	Drug Used	Periodicity	Month
1.	Herbivores	1. Albendazole 2. Fenbendazole 3. Ivermectin	3 Month	Month of deworming is different for different animals and as per need.
2.	Bear	1. Albendazole 2. Fenbendazole 3. Ivermectin	3 Month	
3.	Carnivores (Lion, Tiger and Leopard)	1. Albendazole 2. Fenbendazole 3. Ivermectin 4. Combination of Praziquantel, Pyrantel Pamoate, Febantel	3 Month	

16 DISINFECTION SCHEDULE:

Disinfection Schedule					
Sl. No.	Species	Type of Enclosure	Disinfectant used	Method/Area	Frequency of Disinfection
1.	Felines/ Bears	Lion/Tiger/ Leopard /Sloth Bear	KMnO4	At each entry and exit point including tyre wash at enclosure gates	Daily
			Detergents	Floor of animal cells & retiring room	Daily
			Sodium Hypochlorite	Around retiring room & enclosure	Once in 3 months
			Khorsolin-TH/ Vircon S	Retiring room cells and surrounding area	Once in 3 months
			Fire Blow Sterilization	Retiring room cells, floor, walls, cell grill, Kraal	Once a Week
			Turmeric Powder	Retiring room cells	Twice a Week
			Bleaching Powder	Kraal & enclosure ponds, Water tank, Drainage	Daily
2.	Herbivores	Herbivores	KMnO4	At each entry and exit point including tyrewash at enclosure gates	Daily
			Detergents	Floor of animal cells & retiring room	Daily
			Sodium Hypochlorite	Around retiring room & enclosure	Once in 3 months
			Khorsolin-TH/ Vircon S	Retiring room cells and surrounding area	Once in 3 months
			Fire Blow Sterilization	Retiring room cells, floor, walls, cell grill, Kraal	Once a Week

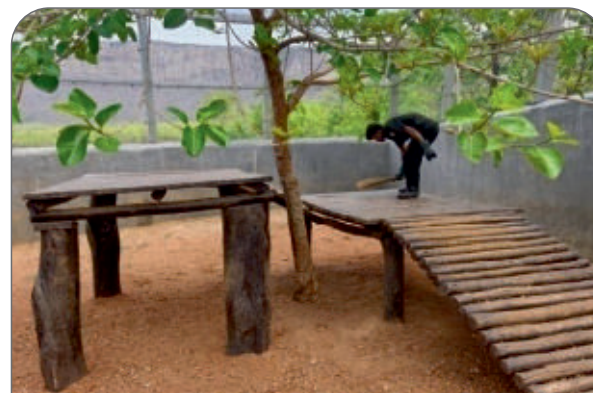
* This disinfection schedule is maintained in Hospital, Post Mortem Hall, Quarantine facilities as well as commissary. In case of special and emergency requirements, the frequency and method of disinfection can be changed. Also, zoo personnel use PPE Kits, Hand-gloves and disinfectants etc post Covid-19 as precautionary measure.



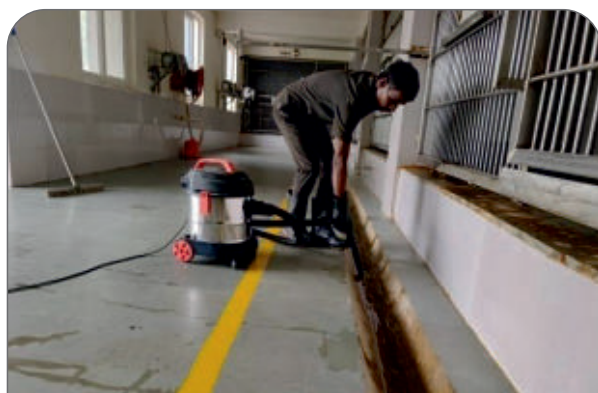
Cell Inside Cleaning



Cell Outside Cleaning



Machan Cleaning



Drainage Cleaning



Food Wastage Cleaning



Cleaning of Fodder Point

17 HEALTH CHECK-UP OF EMPLOYEES FOR ZONOTIC DISEASES

S. No.	Name	Date of Health Check up	Findings of Health Check up
1.	Zoo personnel's Covid-19 test were conducted on Weekly Basis	Weekly Basis	No Adverse Finding
2.	Covid-19 Vaccination of the Staff	19.01.2022	—



18 DEVELOPMENT WORKS CARRIED OUT IN THE ZOO DURING THE YEAR

S. No.	Work done
1.	All Facilities of Reception and Orientation Zone Completed
2.	Development of Bird Aviary is in Progress

FACILITIES AVAILABLE IN RAJGIR ZOO SAFARI

VISITOR RECEPTION ZONE OF RAJGIR ZOO SAFARI





Top View of Reception & Orientation Area



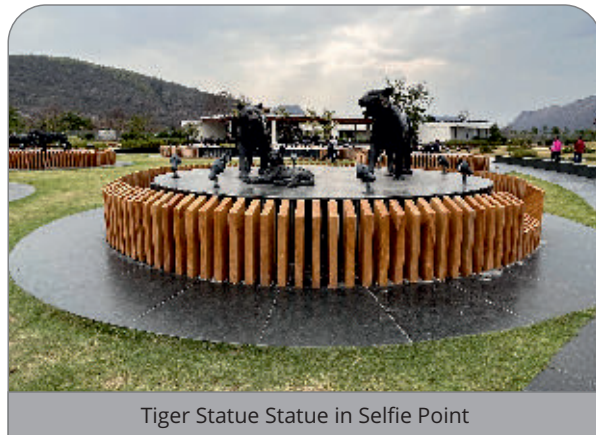
Selfie Point and Entrance Plaza



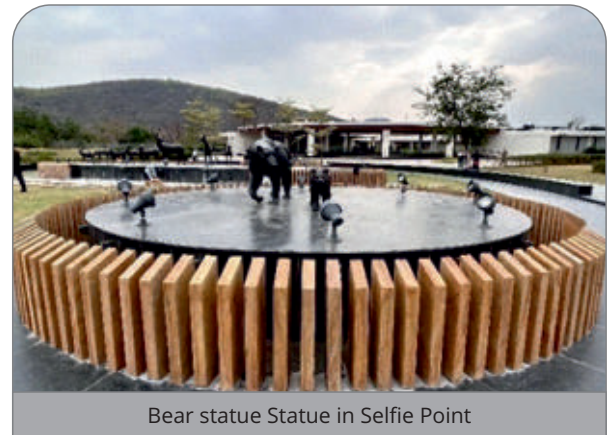
Top View of Entrance Plaza



Lord Buddha Statue in Selfie Point



Tiger Statue Statue in Selfie Point



Bear statue Statue in Selfie Point



Lion Statue in Selfie Point



Selfie Point



Entry area of Entrance Plaza



Reception Counter



Ticket Checking Turnstiles



Corridor and False Ceiling of Entrance Plaza



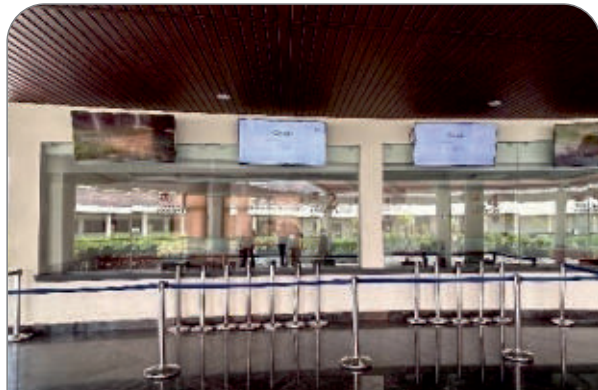
Entrance Plaza Courtyard



Bihari Family Statue in Courtyard



Washrooms



Ticket Counters with information Displays



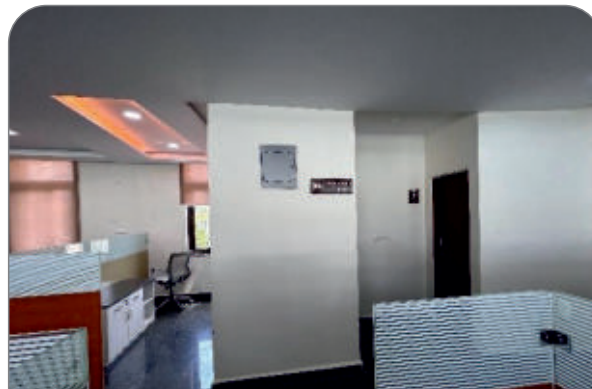
Tourist Information Counter



Ticket counter Computer and Furniture



Ticket counter Fire Safety



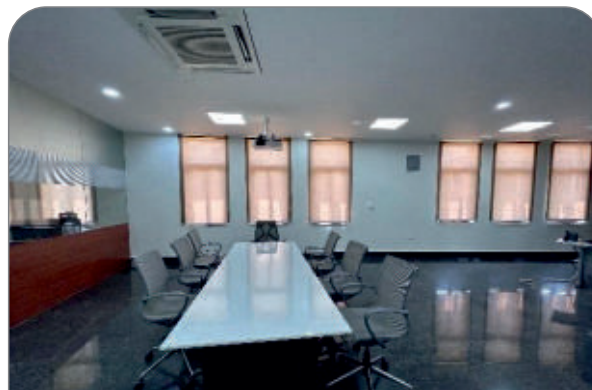
Washrooms of Ticket Counter



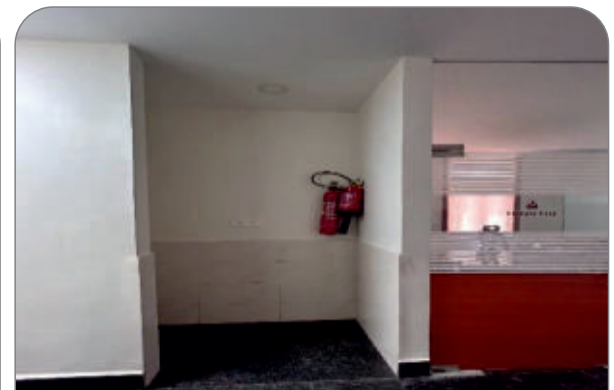
Entrance of Control Room



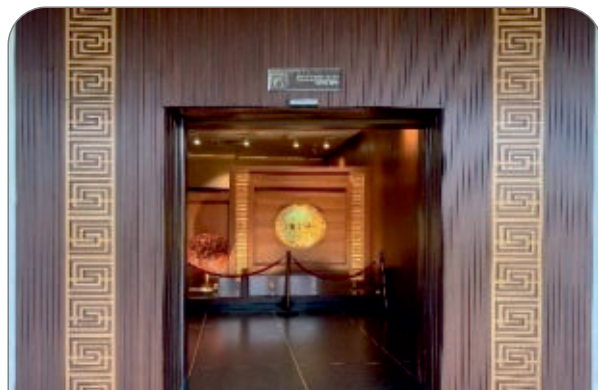
Control Room CCTV Monitoring Displays



Control Room Conference Table



Fire safety in Control Room



Entrance of Interpretation Center



Diorama of Evolution of Earth



Diorama of Geo-morphological Formation



Diorama of Evolution of Earth



Video of Natural Succession



Video of Human Evolution



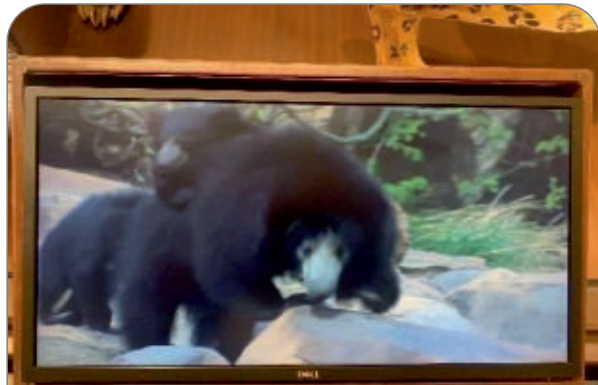
Corridor of Interpretation Center



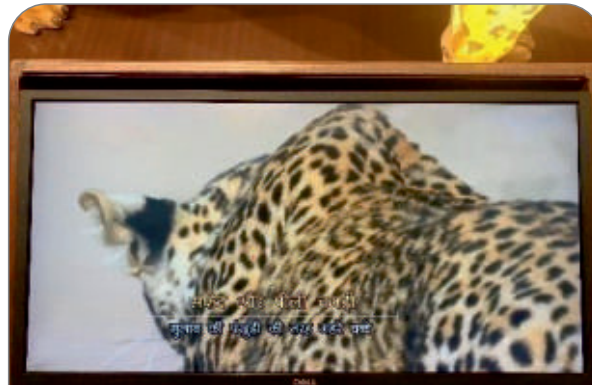
Corridor of Interpretation Center



Information Video of Herbivores



Information Video of Sloth Bear



Information Video of Leopard



Information Video of Tiger



Information Video of Lion



Digital Butterfly Zone



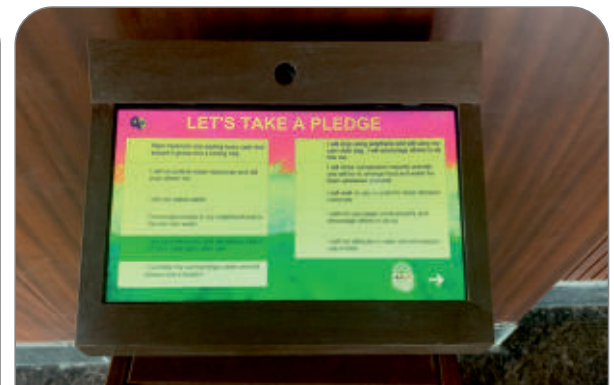
Paintings in Interpretation Center



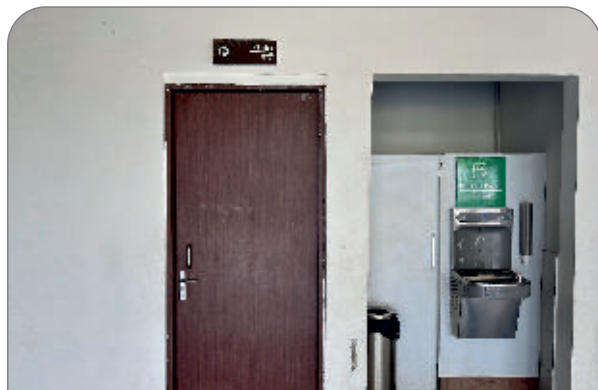
Paintings in Interpretation Center



Information Video



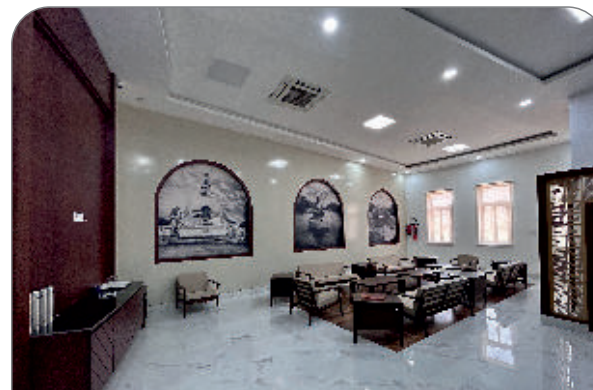
Pledge Zone



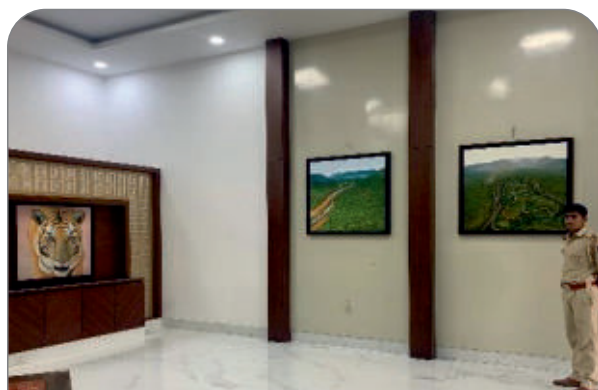
Water Point



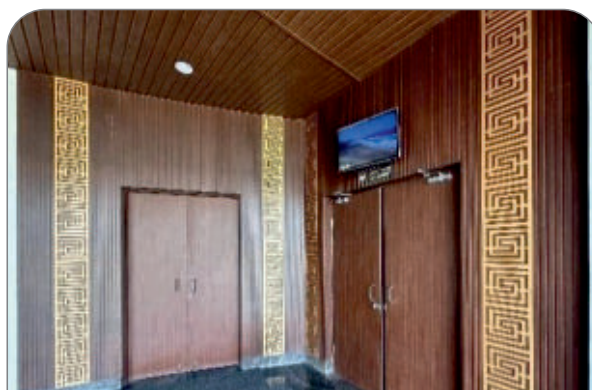
Entrance Plaza Exit Corridor



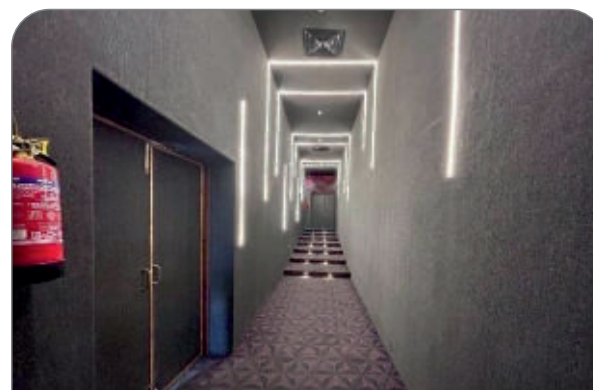
VIP Room Interiors



VIP Room Interiors



Entrance of 180 Degree 3D Theatre



Entrance of 180 Degree 3D Theatre



180 Degree 3D Theatre



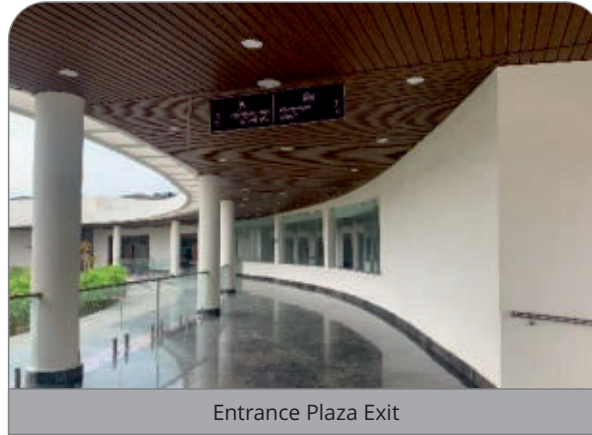
180 Degree 3D Theatre



Exhibition Hall



Washroom and Drinking Water Facility



Entrance Plaza Exit



Exhibition Hall

CHILDREN PARK AND OPEN THEATER



WALKWAY BETWEEN ENTRANCE AND SAFARI PLAZA



SAFARI PLAZA



Top View of Safari Plaza



Entrance of Safari Plaza



Pickup Point of Safari Plaza



Landscaping around Safari Plaza



Courtyard



Safari Plaza Corridor



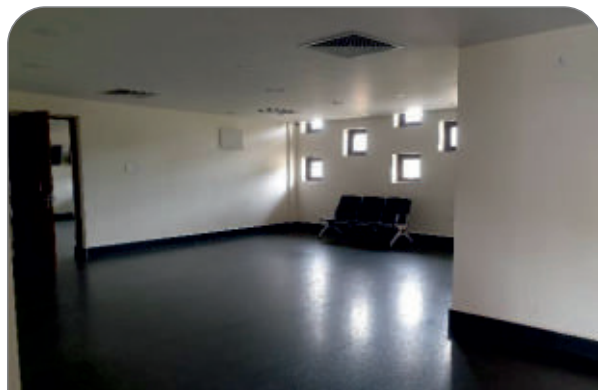
Rotoscope



Audio Chair



Admin Unit



Admin Room



Control Room



Control Room



Ticket Checking Counter



Bus Boarding Point



Orientation Room



Orientation Room



Orientation Room Corridor



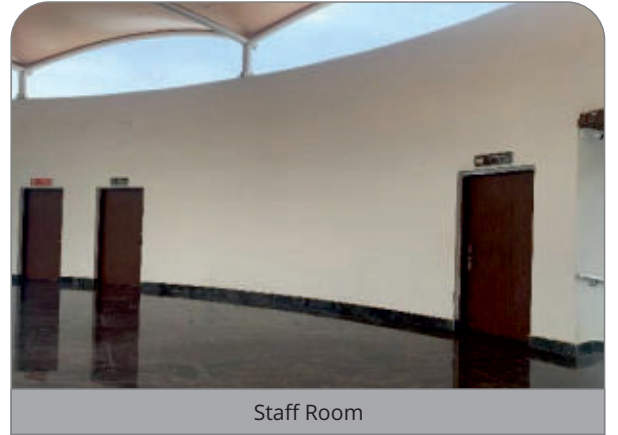
Water Point



Washrooms



Drop Point



Staff Room



Exit of Safari Plaza



Landscaping around Safari Plaza



Landscaping around Safari Plaza



Landscaping around Safari Plaza



Landscaping around Safari Plaza

19 EDUCATION AND AWARENESS PROGRAMMES DURING THE YEAR

S. No.	Programmes
1.	Vriksha Suraksha Diwas
2.	Bihar Prithvi Diwas



20 IMPORTANT EVENTS AND HAPPENINGS IN THE ZOO

S. No.	Programmes
1.	Inauguration of Rajgir Zoo Safari on 16th February 2022 by Hon'ble Chief Minister, Bihar
2.	Celebration of Independence Day

INAUGURATION OF RAJGIR ZOO SAFARI ON 16.02.2022 BY HON'BLE CHIEF MINISTER, BIHAR











VISIT OF HON'BLE CHIEF MINISTER OF BIHAR REVIEW THE PROJECT DEVELOPMENT

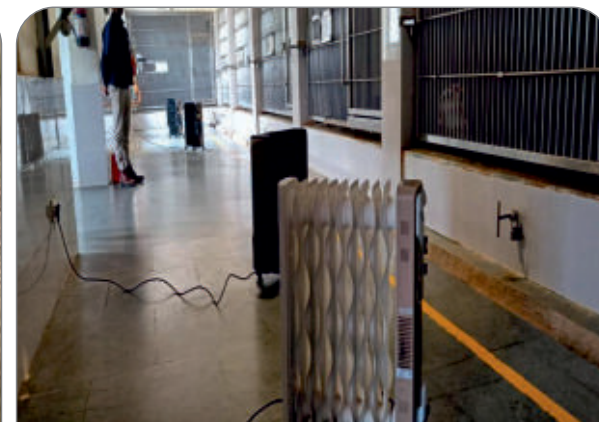


INDEPENDENCE DAY AND REPUBLIC DAY CELEBRATION



21 SEASONAL SPECIAL ARRANGEMENTS FOR UPKEEP OF ANIMALS

- **Diet control:** Addition and deletion of food items as per seasonal requirement.
- **Husbandry practices:** Use of Coolers, Fans and Room Oil-Heaters, covering of windows, providing wooden pegs in animals Retiring Rooms and Cells, Post-monsoon Refilling of Murom in Kraal, Filling of Water bodies during Summer and Water sprinkling on roads and surrounding vegetation during summer.
- Trimming of large trees and bushes for proper sunbath.
- Post monsoon work including Grassland maintenance and trimming of bamboo thickets for grazing and browsing respectively along with removal of weeds.
- Cutting of Fireline's before summer season and View strips maintenance post monsoon.







VERMI COMPOST UNIT MAINTENANCE



WASTE WATER TREATMENT AND MACHAN



ANIMAL WELFARE AND VETERINARY CARE ACTIVITY IMPORTANT ACHIEVEMENTS OF THE YEAR

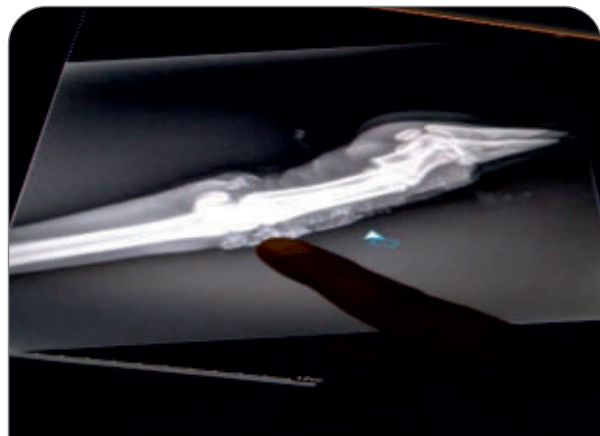
TREATMENT OF BLACK BUCK MULTIPLE FRACTURE OF CARPAL AND METACARPAL

On 14.07.2021, as per directions received from Additional Principal Chief Conservator of Forest-cum-Chief Wildlife Warden, Bihar, an injured male Black Buck was received at Rajgir Zoo Safari hospital from Rohtas Forest Division for its better treatment.

It was reported that the black buck was rescued from forest area region of Sasaram District after being injured by Dog bite. He was unable to walk with his fore legs.

On arriving at Hospital, the animal was taken inside the observation room. On close observation it was observed that he was having multiple fracture of carpal and metacarpal of left forelimb. The fracture was temporarily corrected by using splints and the animal was treated with antibiotic, anti-inflammatory, analgesic medicines. Next day multiple X-rays were taken to rule out fracture of forelimb. After careful examination of X-ray, it is decided to go for expert opinion about surgery from Bihar Veterinary College, Patna. A team of surgeon came from Bihar Veterinary College and examined the animal and film of X-rays. After examining the animal and X-rays film it is decided to go for external fixation of bones by performing orthopaedic surgery under injectable anaesthesia 'zoletil' at dose rate 2.2 to 4.4mg/per kg body weight. Lignocaine hydrochloride at dose rate 4.4mg per kg body weight is also used as local anaesthesia.

The animal was treated with antibiotic, anti-inflammatory, analgesic and multivitamin injections during post operative care.





TREATMENT OF BARKING DEER SUFFERING WITH ABSCESS AT MANDIBULAR REGION

Reported that a barking deer is suffering from swelling at right cheek near mandibular region. The animal is captured physically and examined; on examination it was observed that the swelling area is filled with pus. After examining the animal, it is decided to remove the pus after making a small incision over the affected part under local anaesthesia. The pus is drained out by making a small incision on the swelling part and cleaned thoroughly with antibiotics.

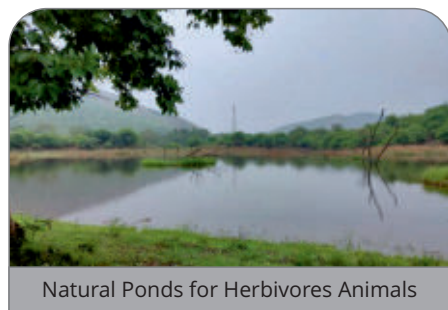
The animal was treated with long-acting antibiotic and anti-inflammatory medicine for five days. The animal fully recovered within one week.



PLANTATION WORK



NATURAL AND ARTIFICIAL POND FOR ANIMALS



Natural Ponds for Herbivores Animals



Artificial Ponds for Carnivores Animals



22 RESEARCH WORK CARRIED OUT AND PUBLICATIONS

Rajgir Zoo Safari is in process of signing a memorandum of understanding with Patna Veterinary College to carry out research work on the wild animals kept at Rajgir Zoo Safari.

23 CONSERVATION BREEDING PROGRAMME OF THE ZOO

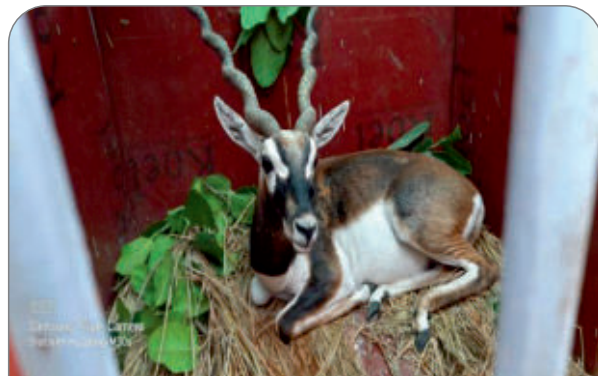
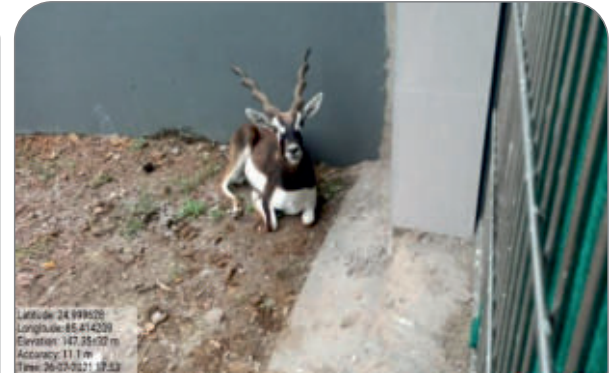
None

24 ANIMAL ACQUISITION / TRANSFER / EXCHANGE DURING THE YEAR 2021-22

A. Animals Arriving in the Zoo

H.No.	Species	Number (M:F:U)	From Which Zoo	Date of arrival in the Zoo
1.	Leopard	2:2:0	Patna Zoo	26.07.2021
2.	Leopard	1:1:0	Patna Zoo	27.07.2021
3.	Sloth Bear	1:1:0	Patna Zoo	27.07.2021
4.	Lion	2:4:0	Sakkarbag Zoological Park, Junagarh, Gujrat	19.09.2021

HERBIVORE TRANSFER IN RETIRING ROOM



LEOPARD TRANSFER IN RETIRING ROOM



LION TRANSFER IN RETIRING ROOM



B. Animal going from Zoo

H.No.	Species	Number (M:F:U)	From Which Zoo	Date of arrival in the Zoo
—	—	—	—	—

25 RESCUE AND REHABILITATION OF WILD ANIMALS CARRIED OUT BY THE ZOO

Sl. No.	Date of Rescue	Species with number of animals rescued with their sex	Received From	Date of submission of report to the CWLW/CZA	Action Taken	
					Date and Place of rehabilitation in their habitat	Reason for housing in the zoo, if not released in their habitat
1.	—	—	—	—	—	—

26 ANNUAL INVENTORY OF ANIMALS

Form – II [See Rule 11(1)] Part – A Inventory Report for the Year : 2021-22

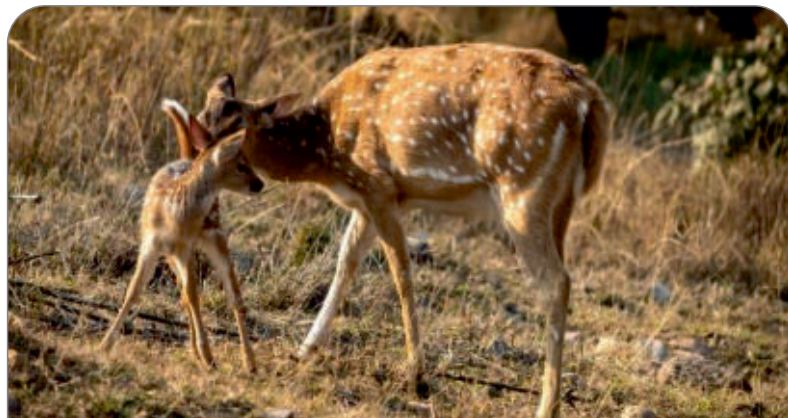
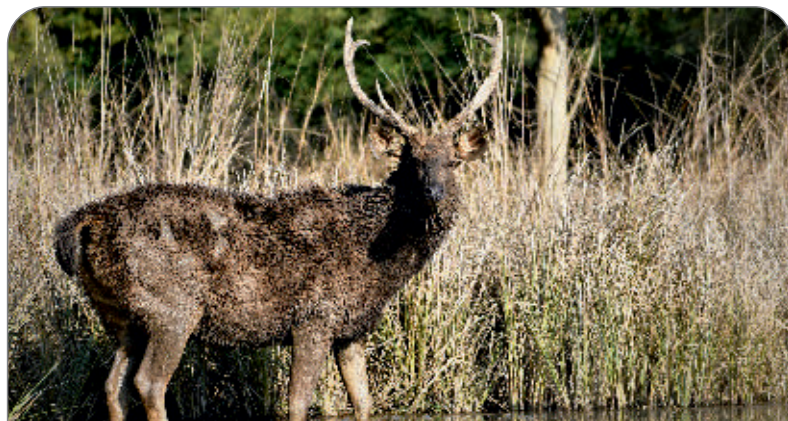
RAJGIR ZOO SAFARI, NALANDA
Animals listed under Schedule-I & Schedule-II of Wildlife (Protection) Act, 1972 Endangered species.

Sl. No.	Animal Name	Scientific Name	Stock as on 01.04.2021				During the Year												Stock as on 31.03.2022				
							Births			Acquisitions			Disposals			Deaths							
			M	F	U	T	M	F	U	M	F	U	M	F	U	M	F	U	M	F	U	T	
MAMMALS																							
1.	Black Buck	<i>Antilope cervicapra</i>	0	0	0	0	0	0	1	2	2	0	0	0	0	1	0	0	1	2	1	4	
2.	Deer-Hog	<i>Axis porcinus</i>	2	6	0	8	1	0	0	0	0	0	0	0	0	0	0	0	6	3	0	9	
3.	Bear- Sloth	<i>Melursus ursinus</i>	0	0	0	0	0	0	0	1	1	0	0	0	0	0	0	1	1	0	2		
4.	Asiatic Lion	<i>Panthera leo persica</i>	1	0	0	1	0	0	0	2	4	0	0	1	0	0	0	3	4	0	7		
5.	Leopard / Panther	<i>Panthera pardus</i>	0	0	0	0	0	0	0	1	1	0	0	0	0	0	0	1	1	0	2		
6.	Tiger-Royal Bengal	<i>Panthera tigris tigris</i>	1	1	0	2	0	0	0	0	0	0	0	0	0	0	0	1	1	0	2		
TOTAL MAMMALS			4	7	0	11	1	0	1	6	8	0	0	1	0	1	0	0	10	15	1	26	
TOTAL ANIMALS			4	7	0	11	1	0	1	6	8	0	0	1	0	1	0	0	10	15	1	26	

Part – B (Other than Endangered Species*)

Sl. No.	Animal Name	Scientific Name	Stock as on 01.04.2021				During the Year												Stock as on 31.03.2022				
							Births			Acquisitions			Disposals			Deaths							
			M	F	U	T	M	F	U	M	F	U	M	F	U	M	F	U	M	F	U	T	
MAMMALS																							
7.	Barking Deer	<i>Muntiacus muntjak</i>	2	5	0	7	0	0	0	0	0	0	0	0	0	2	2	0	0	3	0	3	
8.	Sambar Deer	<i>Rusa unicolor</i>	2	6	1	9	0	0	3	0	0	0	0	0	0	0	0	2	6	4	12		
TOTAL MAMMALS			4	11	1	16	0	0	3	0	0	0	0	0	2	2	0	2	9	4	15		
GRAND TOTAL			8	18	1	27	1	0	4	6	8	0	0	0	3	2	0	12	24	5	41		

WILDLIFE OF RAJGIR ZOO SAFARI, NALANDA





27 MORTALITY OF ANIMALS

Details of death report during 2021-22 (from 1st April, 2021 to 31st March, 2022)

Sl. No.	Species	Scientific Name	Date	Sex	No.	Cause of death
1	Black Buck	<i>Antelope cervicpara</i>	17.07.2021	M	01	Capture myopathy, internal hemorrhage and shock.
2	Barking Deer	<i>Muntiacus muntjak</i>	07.01.2022	F	01	Internal hemorrhage and shock.
3	Barking Deer	<i>Muntiacus muntjak</i>	15.01.2022	M	01	Internal hemorrhage and shock.
4	Barking Deer	<i>Muntiacus muntjak</i>	15.01.2022	M	01	Infighting, Internal hemorrhage and shock.
5	Barking Deer	<i>Muntiacus muntjak</i>	19.02.2022	F	01	Capture myopathy and internal hemorrhage.
6	Chital	<i>Axis axis</i>	17.03.2022	F	01	Tympanites and respiratory failure
7	Black buck	<i>Antelope cervicapra</i>	20.03.2022	M	01	Old age internal hemorrhage and shock.

28 COMPLIANCE WITH CONDITIONS STIPULATED BY THE CENTRAL ZOO AUTHORITY

Sl. No.	Norm No. under RZR, 2009	Condition Stipulated	Time Period to Comply	Since when pending	Status with regard to compliance of the conditions
Details enclosed as "Annexure- A"					

29 LIST OF FREE LIVING WILD ANIMALS WITHIN THE ZOO PREMISES:-

Free Range Birds of Rajgir Zoo Safari, Nalanda.

Sl. No.	Common Name	Scientific Name	Status	IUCN/WPA Status
1	Little Cormorant	<i>Phalacrocorax niger</i>	R*2	Sch-IV
2	Indian Pond Heron	<i>Ardeola grayi</i>	R*1	Sch-IV
3	Cattle Egret	<i>Bulbulcus ibis</i>	RA1	Sch-IV
4	Little Egret	<i>Egretta garzetta</i>	R*2	Sch-IV
5	Black-crowned Night Heron	<i>Nycticorax nycticorax</i>	RM3	Sch-IV
6	Black (Paharia) Kite	<i>Milvus migrans</i>	RM1	Sch.- I
7	Shikra	<i>Accipiter badius</i>	RM2	Sch.-I
8	Bronze-winged Jacana	<i>Metopidius indicus</i>	R*2	Sch.-IV
9	Red-wattled Lapwing	<i>Vanellus indicus</i>	R*A1	Sch-IV
10	Yellow-footed Green Pigeon	<i>Treron phoenicoptera</i>	R*2	Sch-IV

Free Range Birds of Rajgir Zoo Safari, Nalanda.

Sl. No.	Common Name	Scientific Name	Status	IUCN/WPA Status
11	Eurasian Collared Dove	<i>Streptopelia decaocto</i>	R*A1	Sch-IV
12	Spotted Dove	<i>Streptopelia chinensis</i>	R*A1	Sch-IV
13	Alexandrine Parakeet	<i>Psittacula eupatria</i>	R*3	Sch-IV
14	Rose ringed Parakeet	<i>Psittacula krameri</i>	R1	Sch-IV
15	Common Hawk Cuckoo	<i>Hierococcyx (Cuculus) varius</i>	R*2	Sch-IV
16	Asian Koel (Koel)	<i>Eudynamys scolopacea</i>	R*1	Sch-IV
17	Greater Coucal	<i>Centropus sinensis</i>	R1	Sch-IV
18	Barn Owl	<i>Tyto alba</i>	R3-4	Sch-IV
19	Spotted Owlet	<i>Athene brama</i>	R1	Sch-IV
20	Asian Palm Swift	<i>Cypsiurus (parvus) batasiensis</i>	R2	Sch-IV
21	Common Kingfisher	<i>Alcedo atthis</i>	RM1	Sch-IV
22	Stork-billed Kingfisher	<i>Halcyon (Pelargopsis) capensis</i>	R3	Sch-IV
23	White-throated Kingfisher	<i>Halcyon symnensis</i>	R*1	Sch-IV
24	Green Bee-eater	<i>Merops orientalis</i>	R*M1	Sch-IV
25	Common Hoopoe	<i>Upupa epops</i>	RBW2	Sch-IV
26	Blue-throated Barbet	<i>Megalaima asiatica</i>	R2	Sch-IV
27	Black-rumped Flameback	<i>Dinopium benghalense</i>	N1	Sch-IV
28	Brown Shrike	<i>Lanius cristatus</i>	W2	Sch-IV
29	Eurasian Golden oriole	<i>Oriolus oriolus</i>	RMP2	Sch-IV
30	Black-hooked Oriole	<i>Oriolus xanthornus</i>	R*2	Sch-IV
31	Black Drongo (King-Crow)	<i>Dicrurus (adsimillis) macrocerus</i>	R*A1	Sch-IV
32	Asian Pied Starling	<i>Sturnus contra</i>	R*2	Sch-IV
33	Common Myna	<i>Acridotheres tristis</i>	R1	Sch-IV
34	Rufous (Indian) Treepie	<i>Dendrocitta vagabunda</i>	R2	Sch-IV
35	House Crow	<i>Corvus splendens</i>	RA**1	Sch.-V
36	Red-whiskered Bulbul	<i>Pycnonotus jocosus</i>	R1	Sch-IV
37	Red-vented Bulbul	<i>Pycnonotus cafer</i>	R1	Sch-IV
38	Jungle Babbler	<i>Turdoides striatus</i>	E1	Sch-IV
39	Red-throated Flycatcher	<i>Ficedula (Muscicapa) parva</i>	WP1	Sch-IV
40	Common Tailorbird	<i>Orthotomus sutorius</i>	R1	Sch-IV
41	Blyth's Reed Warbler	<i>Acrocephalus dumetorum</i>	WP(B**?)1	Sch-IV
42	Oriental Magpie Robin	<i>Copsychus saularis</i>	RM1	Sch-IV
43	Olive-backed (Indian Tree) Pipit	<i>Anthus hodginsi</i>	MAW2	Sch-IV
44	White (Pied) Wagtail	<i>Motacilla alba</i>	S,W	Sch-IV
45	White-browed Wagtail	<i>Motacilla maderaspatensis</i>	E2	Sch-IV
46	Pale-billed Flowerpecker	<i>Dicaeum erythrorhynchos</i>	NA2	Sch-IV
47	Purple-rumped Sunbird	<i>Nectarinia zeylonica</i>	R2	Sch-IV
48	Purple Sunbird	<i>Nectarinia aslatica</i>	R*AM1	Sch-IV
49	House Sparrow	<i>Paser domesticus</i>	M1	Sch-IV

Symbols	
E	Endemic to the Indian subcontinent (resident unless otherwise indicated)
N	Near endemic (resident unless otherwise indicated)
R	Resident
B	Breeder
S	Summer visitor
A	Altitudinal migrant
M	Migrants within the subcontinent (e.g. breeds in the Himalays & winters in)
P	Pasage migrant
W	Winter visitor
*	Subject to some (local) seasonal movement or nomadism
**	Localised or patchily distributed (eg. B**= breeds locally)
?	Status uncertain
1	Abundant or very common
2	Common
3	Fairly common
4	Uncommon

Free Range Mammals of Rajgir Zoo Safari, Nalanda.		
S.No.	Name of species	Scientific Name
1	Blue bulls	<i>Boselaphus tragocamelus</i>
2	Wild boar	<i>Sus scrofa</i>
3	Civet – Common Palm	<i>Paradoxurus hermaphroditus</i>
4	Stripped Squirrel	<i>Funambulus palmarum</i>
5	Porcupine	<i>Hystericus indica</i>
6	Jackals	<i>Canis aureus</i>
7	Hare	<i>Lepus nigricollis</i>

Free Range Reptiles of Rajgir Zoo Safari Nalanda		
S.No.	Name of species	Scientific Name
1	Indian spectacled cobra	<i>Naja naja</i>
2	Krait	<i>Bungarus caeruleus</i>
3	Russell's viper	<i>Daboia russelli</i>
4	Indian rock python	<i>Python molurus</i>
5	Common wolf snake	<i>Lycodon capucinus</i>
6	Common vine snake	<i>Ahaetulla nasuta</i>
7	Common bronzeback tree snake	<i>Dendrelaphis tristis</i>
8	Monitor lizard	<i>Varanus varanus</i>
9	Rat snake	<i>Zamenis longissimus</i>
10	Oriental rat snake	<i>Ptyas mucosa</i>
11	Common cat snake	<i>Boiga trigonata</i>
12	Common sand boa	<i>Eryx conicus</i>
13	Chekered keelback	<i>Fowlea piscator</i>
14	Brahminy worm snake	<i>Ramphotyphlops braminus</i>
15	Buff striped keelback	<i>Amphiesma stolatum</i>
16	Common kukri	<i>Oligodon arnensis</i>

ANNEXURE A

30 DETAILS ON COMPLIANCE OF THE CONDITIONS STIPULATED BY THE CENTRAL ZOO AUTHORITY

(as per the earlier letter of grant of recognition issued to the zoo)

Issued vide Letter No. (1) Computer. No. 139450, F. No. 20-4/2015-CZA(Vol-II)(E), dated 18.12.2020.

Sr. No	Norm No. under RZR, 2009	Condition Stipulated	Time Period to Comply	Since when pending	Status with regard to compliance of the conditions as submitted by the Officer-in-charge of the Zoo
1.	10 (1.1)	The zoo should make efforts to maintain population of physically, genetically and behaviourally healthy animals.	Right from the opening/beginning of zoo.	18.12.2020	Being Complied.
2.	10 (2.2)	The zoo should appoint a Biologist and Education Officer before the Zoo is opened to public.	Once the Zoo is opened.	18.12.2020	The appointment is under process.
3.	10 (3.1)	The amended Master Plan of the Zoo should be prepared and submitted to CZA for its approval.	Six months.	18.12.2020	Being Complied.
4.	10 (3.5)	The rescued animals to be housed at the Rescue Centre should have prior approval from the Chief Wildlife Warden of the state.	With immediate effect.	18.12.2020	Being Complied.
5.	10 (4.3)	The zoo should ensure completion of minor construction works such as chain-link fixtures, entry gate, finishing touches in holding rooms, door locking mechanism towards keeper gallery etc. and a report should be submitted to CZA before opening the Zoo.	Before the time of opening of the Zoo.	18.12.2020	Complied
6.	10 (4.10)a & 10 (11.1)a	The Zoo should ensure installation of appropriately located bilingual signages containing the biological & behavioural information of respective animals.	Before the Zoo is operationalized.	18.12.2020	Complied. It is a Safari where visitors are taken in a Bus to see the wild animals. Hence, the information about the animal biology, behaviour etc are being provided to the visitors through audio-visual means in the Safari Bus and Guides deployed in the Safari Bus.
7.	10 (4.10)c & 10 (11.1)b	The Zoo should also make effort to complete the work of Interpretation Centre at the earliest.	One year.	18.12.2020	Complied.

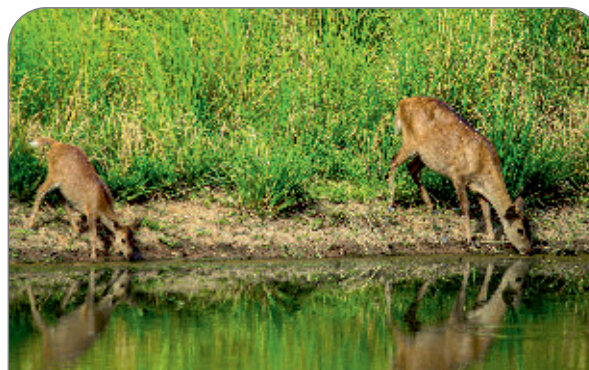
Sr. No	Norm No. under RZR, 2009	Condition Stipulated	Time Period to Comply	Since when pending	Status with regard to compliance of the conditions as submitted by the Officer-in-charge of the Zoo
8.	10 (5.2)3	The Zoo should have appropriate storage facility for meat and feed for the animals, at least for one week keeping in view the emergency situation like prevailing pandemic (COVID-19).	With immediate effect.	18.12.2020	Complied.
9.	10 (5.2)6	The Zoo authorities should take up the random food and water samples being tested periodically for microbiological, toxicological and any other contaminants at recognized laboratory.	Six months.	18.12.2020	Being Complied.
10.	10 (5.3)3	At the time of acquisition of animals, all animals arriving should be screened for parasitic loads and prophylactic medicines administered as per clinical requirements and vaccination of animals against infectious diseases are also done, as per the prescribed schedule.	Six months.	18.12.2020	Being Complied.
11.	10 (5.3)4	The Zoo should have written schedule of vaccination and de-worming of different species of wild animals proposed to be housed at Zoo and the same should also be displayed at the enclosure.	With immediate effect.	18.12.2020	Complied. Written schedule of vaccination and de-worming of different species of wild animals has been prepared, followed, and displayed at the enclosure.
12.	10 (5.3)5	The Zoo should maintain detailed records of observations of biological and social behaviour and health status of the animals including feed intake, medication and treatment provided in the keeper's diary, daily reports, animal history cards and treatment cards, as per standards specified by the Central Zoo Authority.	With immediate effect.	18.12.2020	Complied. All records are being maintained as per the standards specified by the CZA.
13	10 (5.3)6	All staff of the Zoo involved with upkeep and healthcare of Zoo animals screened against zoonotic diseases once every year and action appropriate should be ensured.	With immediate effect.	18.12.2020	Being Complied.
14.	10 (5.3)8 & 10 (6.4)	The Zoo should have formal linkages with some Veterinary University/Institution through a MoU on healthcare, preventive, health management, surgical interventions, clinical tests, disease diagnosis and consultation in treatment and management.	One year.	18.12.2020	Being Complied.
15.	10 (1.9)	Prior to operationalising the Zoo, it shall be ensured that all wild and domestic animals shall be driven out of the Zoo campus, before releasing animals in safari.	With immediate effect.	18.12.2020	Complied.

Sr. No	Norm No. under RZR, 2009	Condition Stipulated	Time Period to Comply	Since when pending	Status with regard to compliance of the conditions as submitted by the Officer-in-charge of the Zoo
16.	10 (6.2)1	The Zoo should have appropriate animal restraint equipment, accessories and drugs before operationalized.	With immediate effect.	18.12.2020	Complied.
17.	10 (6.3)	The Zoo/Rescue Centre Should appoint support staff (Lab Assistant & Compounder) as specified by the CZA.	As early as possible.	18.12.2020	Being Complied.
18.	10 (8.1)	The Zoo/Rescue Centre should not euthanize any animal unless doing so is essential for relieving from suffering from incurable disease/condition as per the norms of CZA.	With immediate effect.	18.12.2020	Complied.
19.	10 (10.1)	The Zoo should have act on implementation of research plan as indicated in the Master Plan and conducted research on need-based solution-oriented research projects.	From the beginning itself.	18.12.2020	Being Complied.
20.	10 (12.1) a & b	Additional number (1 or 2) of drinking water point and urinals can be provided alongside the exit road of the Zoo Safari.	One year.	18.12.2020	Complied.
21.	10 (12.2)	The Zoo should ensure availability of first-aid facilities including snake anti-venom and life saving drugs, readily available in the Zoo premises.	With immediate effect.	18.12.2020	Complied.
22.	10 (12.3)	The Zoo should ensure that visitor facilities are “Divyang Jan” friendly and have easy access. Further, wheel chair should also be readily available.	Before opening of the Zoo to public.	18.12.2020	Complied.

ANNEXURE B

ENCLOSURES AND OTHER FACILITIES DEVELOPED IN SAFARI ZONE OF RAJGIR ZOO SAFARI

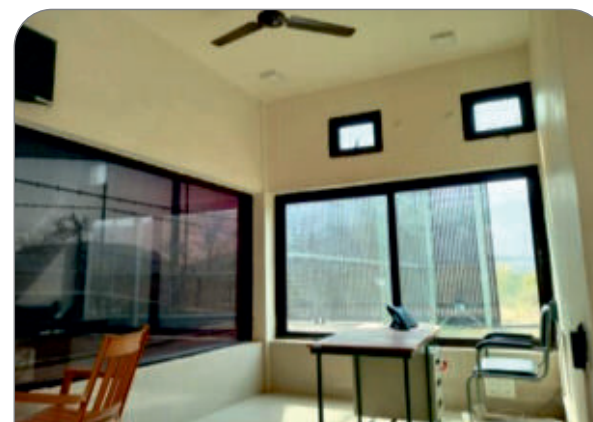
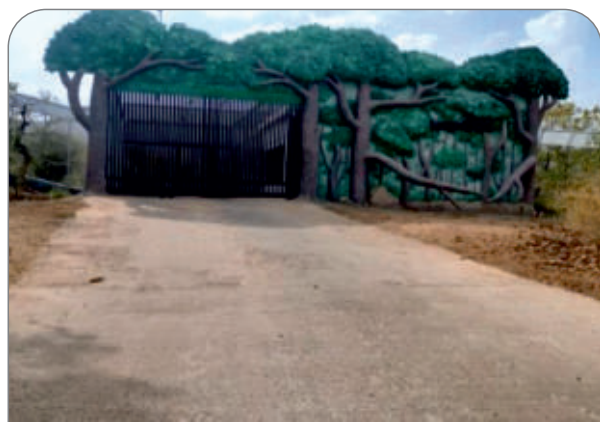
HERBIVORE ENCLOSURE



BEAR ENCLOSURE



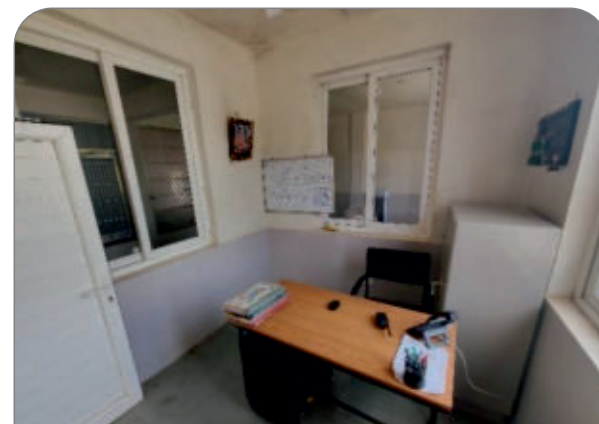
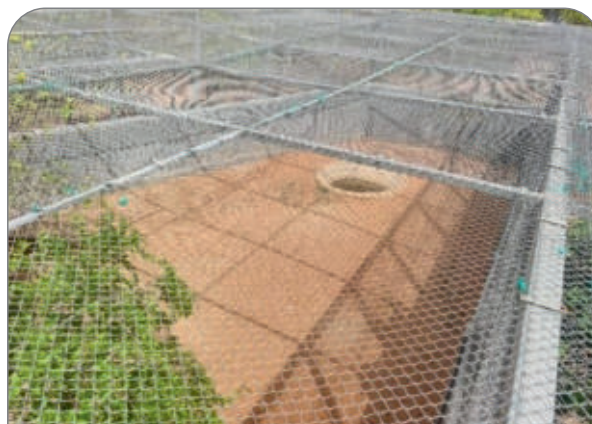
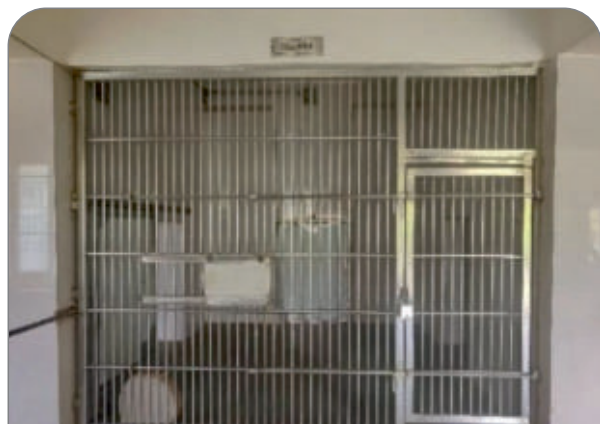
LEOPARD ENCLOSURE



TIGER ENCLOSURE



LION ENCLOSURE



FACILITIES DEVELOPED IN MANAGEMENT ZONE OF RAJGIR ZOO SAFARI

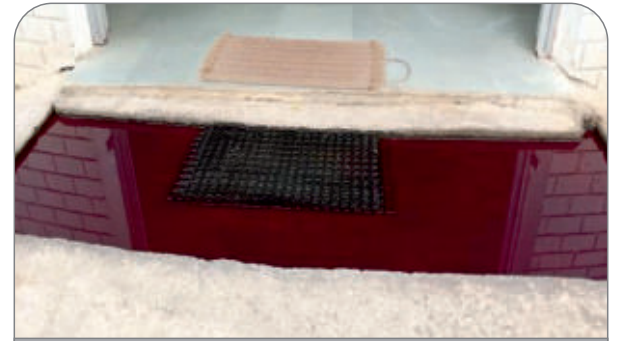
VETERINARY HOSPITAL



Bird's-eye View



Front View



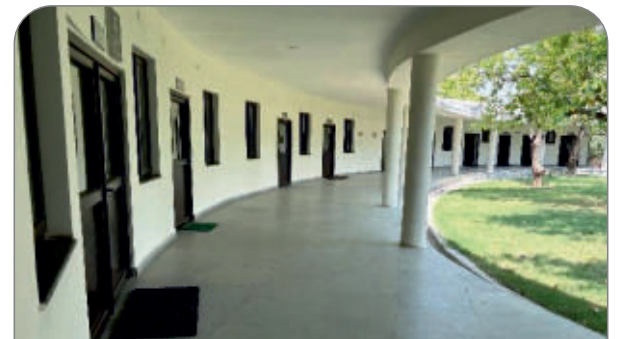
Foot wash at Main Gate of Hospital



Reception Area



Reception Area



Corridor Area Left Side



Corridor and Lawn Area



Corridor and Lawn Area



Laboratory Main Entrance



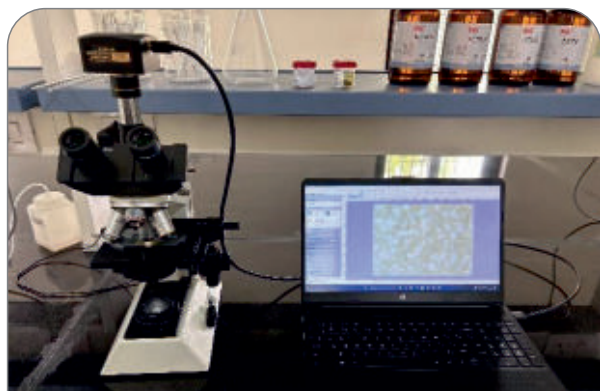
Laboratory



Electrolyte Analyzer



Centrifuge Machine



Trinocular Microscope with camera & Laptop



Rotator



Haematology Analyzer



UPS



Bacteriology Incubator



Hot Air Oven



Hot Air Oven



Micro Pipette



Chemicals and Glass ware



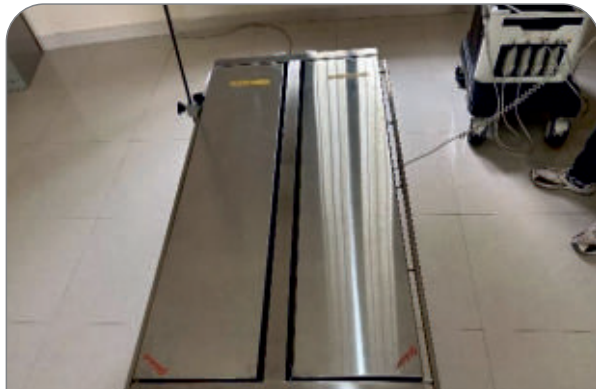
Refrigerator



Ultrasound Machine



Medical Grade USG Screen



V-Top Table for Observation



Probes of USG



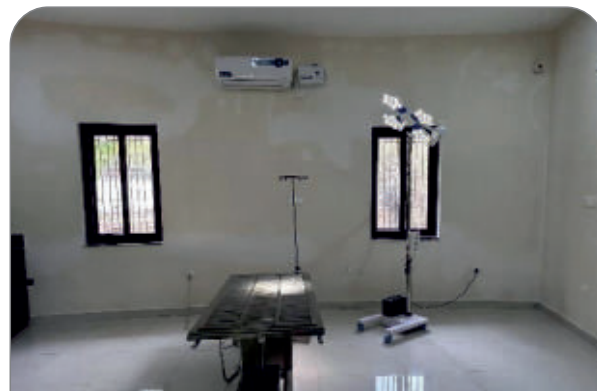
Ultrasound Machine with UPS



Ultrasound Machine with all Interiors



V-Table operation with remote control



Observation Table with All Interior



Shadow less Lamp



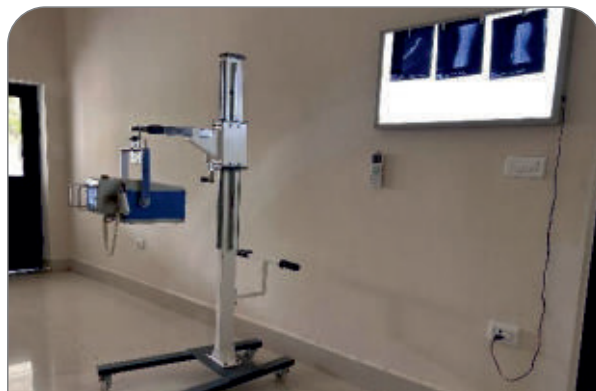
Mobile Shadow less Lamp



Observation Room



Observation of Injured Black Buck



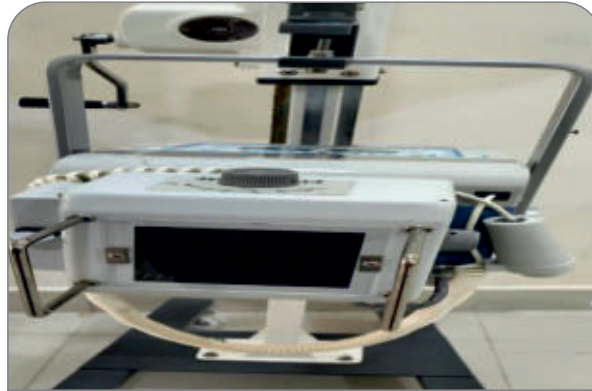
Portable machine with Stand



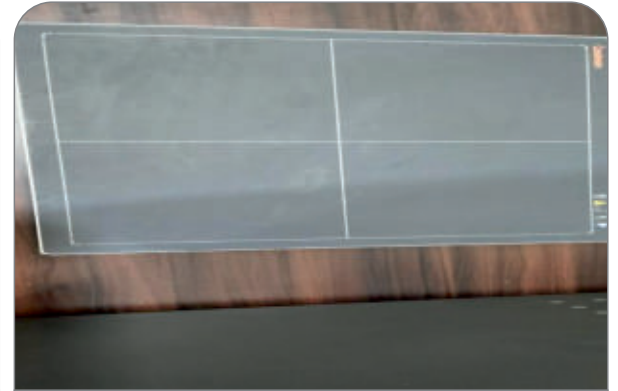
Portable machine with DR Plate



Portable Machine



Portable Machine



Digital Radiography Plate



X-Ray Film Printer



X-RAY View Box



Vertical Autoclave Machine



Horizontal Autoclave Machine



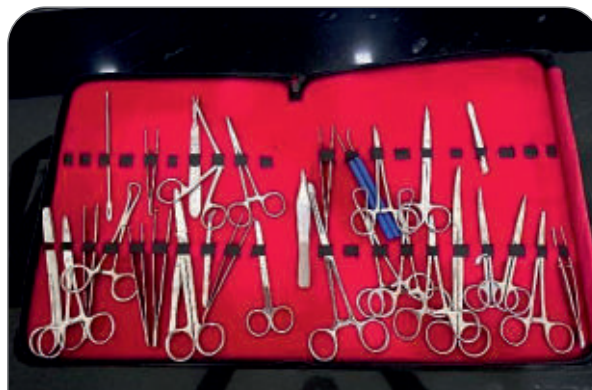
Surgical and PM Kit Bag



Large Animal PM Kit



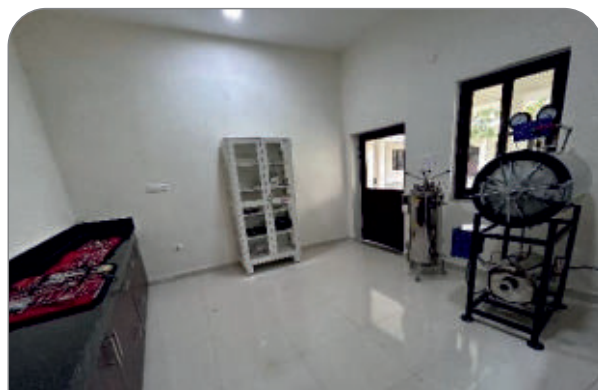
Large Animal Surgical Instruments Kit



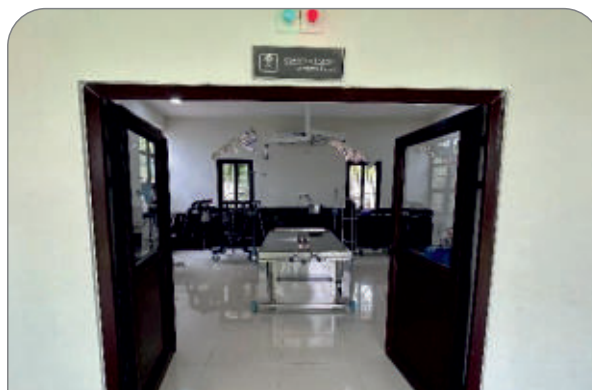
Small Animal Surgical Instruments Kit



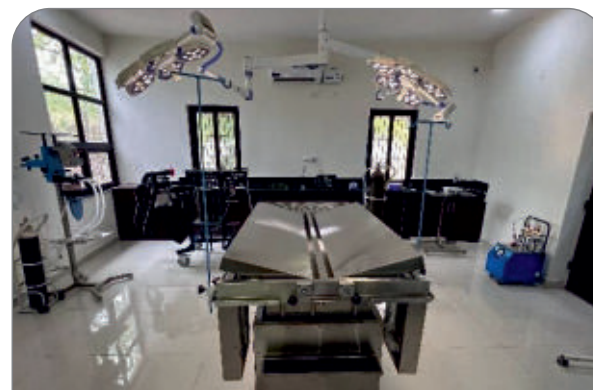
Equipment Storage



Surgical Equipment Room



Main Entrance



Hydraulic OT-Table with 3 fold-inclination



Small Animal Anaesthesia Machine



Large Animal Anaesthesia Machine



Multiparameter Monitor



Suction Machine



Infusion Pump



Pulse Oximeter



Electrocautery Machine



Partition Curtain



Drug Trolley



Oxygen cylinder with Trolley



Small Oxygen cylinder with Trolley



Over head Shadow Lamp



Pulsovet with ECG



Operation of Black-buck



Hospital IPD Cells



Drop gate operating system



Provision of Cooler for Summer Session



Animal in Hospital Cell



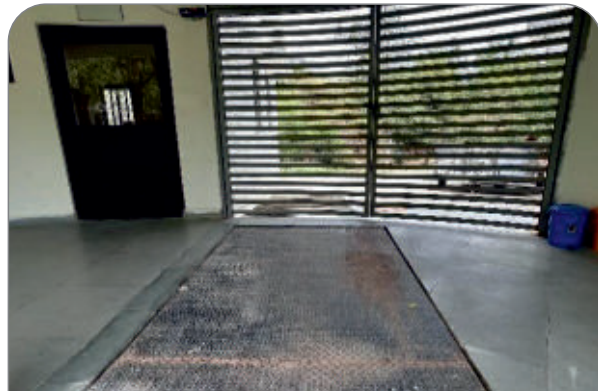
Animal in Hospital Kraal



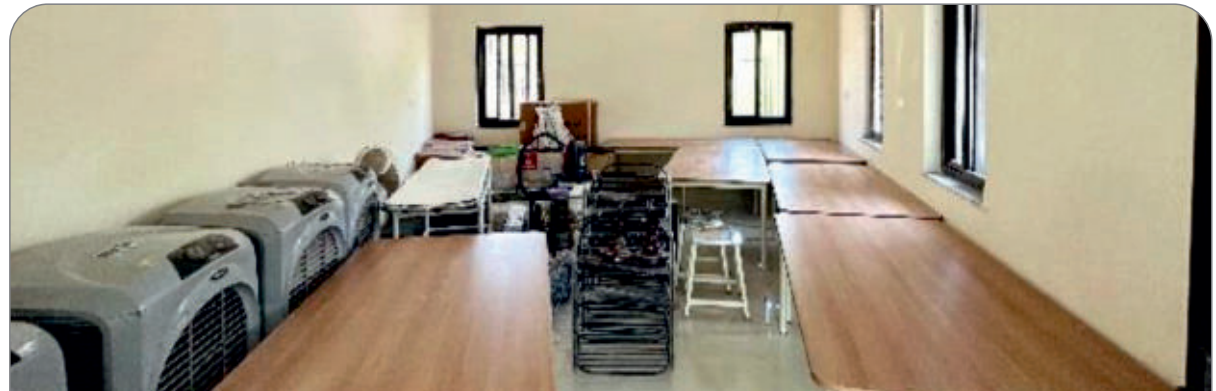
Nursery Room



Weighing Machine



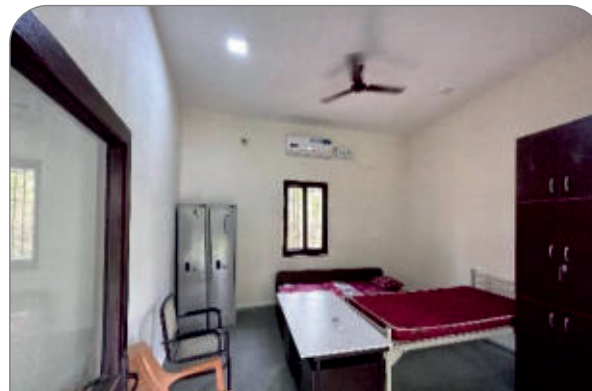
Weighing Machine to weigh animal



Store Room



Hospital Pantry



Hospital Staff Room



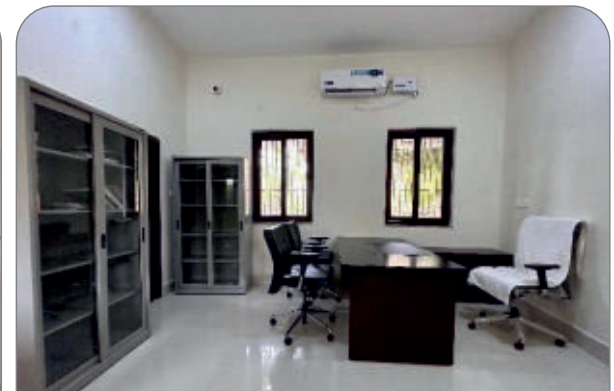
Herbivores Transportation Cage



Trolley for Large Animal



Doctor Chamber 1



Doctor Chamber 2



Vaccine Carrier



S.S Drug Trolley



Rescue Tractor



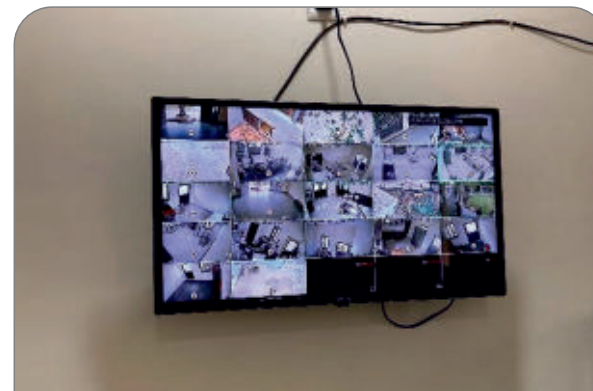
Rescue Camper



S.S Carnivores Transportation Cage



Solar and Water Tank



CCTV Control Unit

HERBIVORE AND CARNIVORE QUARANTINE FACILITY



Aerial View



Keeper Room



Cells of Carnivore Quarantines



Carnivore Quarantine Keeper's Gallery



Herbivore Quarantine Keeper's Gallery



Herbivore Quarantine Cells

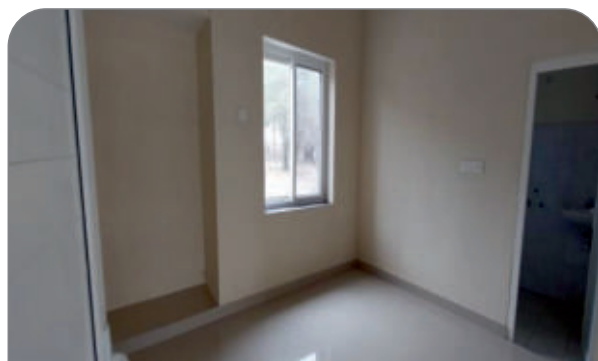
POST MORTEM ROOM



Postmortem Building



Postmortem Hall



Doctor's Room with Shower



Sample Collection Room



Doctors. performing Post Mortem



Waste Water Treatment Unit



Vermi Compost Unit

COMMISSARY



Bird's Eye View



Front View



Interior View



Record Room



CCTV Camera with LED Tv



Weight Recordiing Machine



Non- Veg Preparation Room



Non-Veg Preparation Room



Food Distribution Utensils



Food Utensils Storage



Stove with Cylinder



Chimney in Non-Veg Section



Food Preparation Utensils



Fish & Chicken Preparation Room



Deep Freezer



Ice Box



Weighing Machine



Non- Veg Distribution Counter



Cold Storage Room



Non- Veg Delivery Vehicle



Feed Storage Room



Feed storage Utensils



Feed Storage Rack



Flour mill



Kitchen



Utensils and Furnishing of Kitchen



Utensils and Furnishing of Kitchen



Chinmey in Kitchen



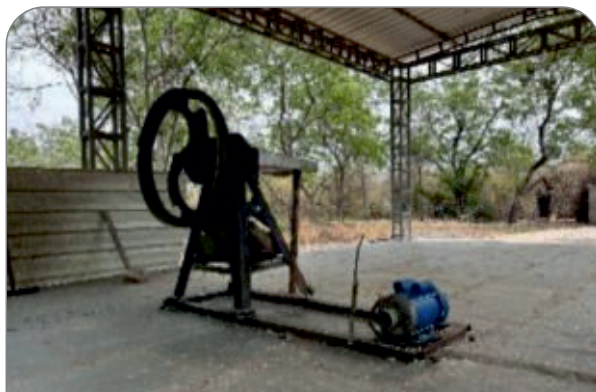
Water Purifier



Refrigerator



Grass storage shed



Grass cutting machine



Tractor for Grass delivery



Weighing Bridge

OTHER FACILITIES AND MACHINERIES AVAILABLE IN MANAGEMENT ZONE



Zoo Safari Bus shed



Zoo Safari Buses



Ambulance



Ambulance facilities



Fire Vehicle



Electric Cycles for Internal Movement of Staff



Golf Cart



Sky lift Vehicle Operation



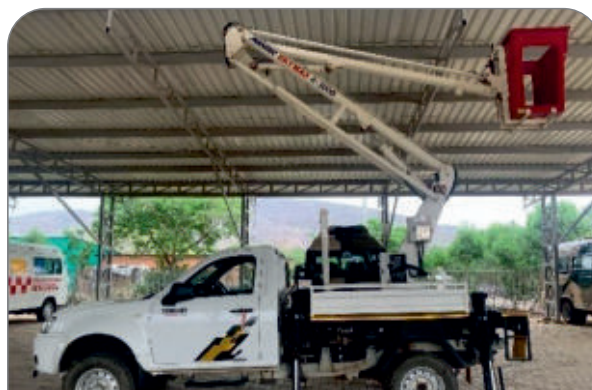
Waste Tipper



Modified Zoo Safari Buses



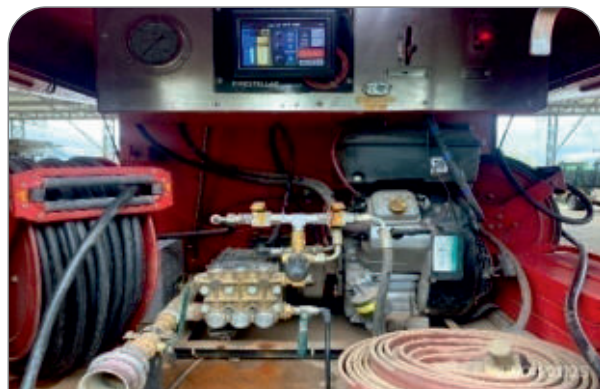
Veterinary Doctor Vehicle



Sky lift Vehicle



Electric Scooter



Fire Vehicle Interior



Water Tankers



Bus Washing Area

तर्तन विभाग
सफारी

वरी 2022

श्री नीत

माननीय
के कर-कमल
वि

श्री तारकिशोर प्रसाद

माननीय उप मुख्यमंत्री, बिहार

श्री विजय कुमार चौधरी

माननीय मंत्री, शिक्षा विभाग, बिहार

श्री नीरज

माननीय मंत्री, पर्यावरण, प















Email Address: rajgirzoosafari@gmail.com

Full Address: **Rajgir Zoo Safari, Rajgir, Nalanda District, Bihar 803116, India.**

Website: <https://rajgirzoosafari.bihar.gov.in>