



Harinalaya Mini Zoo

— Annual Report 2025-26 —



<i>Sl. No</i>	<i>Section</i>	<i>Page Number</i>
1.	<i>Report of the Officer -in-charge</i>	<i>3-4</i>
2.	<i>History of the Zoo</i>	<i>4</i>
3.	<i>Vision</i>	<i>4-5</i>
4.	<i>Mission</i>	<i>5</i>
5.	<i>Objective</i>	<i>5</i>
6.	<i>About us</i>	<i>6-7</i>
7.	<i>Organizational Chart</i>	<i>7</i>
8.	<i>Human Resources</i>	<i>8</i>
9.	<i>Capacity building of the zoo Personnel</i>	<i>9</i>
10.	<i>Zoo Advisory Committee</i>	<i>10</i>
11.	<i>Health Advisory Committee</i>	<i>10</i>
12.	<i>Statement of income & expenditure of the Zoo</i>	<i>10</i>
13.	<i>Daily feed Schedule of animals</i>	<i>11-21</i>
14.	<i>Vaccination Schedule of animals</i>	<i>21-23</i>
15.	<i>De-worming Schedule of animals</i>	<i>24-25</i>
16.	<i>Disinfection Schedule</i>	<i>26</i>
17.	<i>Health Check-up of employees for zoonotic disease</i>	<i>26-27</i>
18.	<i>Development Works carried out in the zoo during the year</i>	<i>27-31</i>
19.	<i>Education & Awareness Programmes during the year</i>	<i>31-35</i>
20.	<i>Important Events and happenings in the zoo</i>	<i>36-37</i>
21.	<i>Seasonal special arrangements for upkeep of animals</i>	<i>38-39</i>
22.	<i>Research work carried out and publications</i>	<i>40</i>
23.	<i>Conservation Breeding Programme of the zoo</i>	<i>40</i>
24.	<i>Annual acquisition/ transfer/ exchange during the year</i>	<i>40-41</i>
25.	<i>Rescue and Rehabilitation of the wild animals carried out by the zoo</i>	<i>42</i>
26.	<i>Annual Inventory of the Animals</i>	<i>42-45</i>
27.	<i>Mortality of Animals</i>	<i>46-49</i>
28.	<i>Status of the Compliance with conditions stipulated by the Central Zoo Authority</i>	<i>50-51</i>
29.	<i>Adoption</i>	<i>52</i>
30.	<i>List of free living wild animals within the zoo premises</i>	<i>53-56</i>

1. Report of the Officer -in-charge :

Nestled within the burgeoning urban expanse of the Newtown-Kolkata Metropolis, Harinalaya Mini Zoo stands as a sanctuary of biological heritage and a testament to West Bengal's commitment to the natural world.

Today, Harinalaya flourishes as a recognized Mini Zoo, weaving a tapestry of biodiversity that includes fifty-two distinct species including Northern Giraffe, Common Hippopotamus, Grant's Zebra, endangered reptiles e.g. Salt Water and Marsh crocodile, a wide variety of flying and aquatic Birds including Macaws, Parrots, Lory, Cockatoos, Swans, and Primates including new world and old world monkeys. Harinalaya caters to more than 2 Lakh visitors annually creating an immersive symphony of life for them and offcourse an enchanting experience to remember.

Harinalaya ensures the best care for the animals and offers an immersive experience to the visitors through scientifically designed naturalistic enclosures with enrichments and visitor facilities. Continuous electronic surveillance is maintained to ensure safety and security of the animals and visitors. Animal adoption facilities are available and ongoing at the zoo.

Inaugurated on the 9th February, 2023, Harinalaya is run under the West Bengal Zoo Authority, by the Ex-officio Director and Deputy Conservator of Forests, Urban and Recreation Forestry Division, and is currently recognized as a Mini Zoo by the Central Zoo Authority.

The Zoo envisions to become a Centre of Ex-Situ conservation for various threatened fauna, including endemic species, to ultimately aid to in-situ conservation. The Zoo strengthens its conservation efforts through awareness and outreach activities with schools and educational institutions. Through educational outreach and animal adoption programs, the zoo bridges the gap between captive behaviour and the urgent necessity of ex-situ conservation, envisioning a future where these efforts directly impact the survival of threatened species in their ancestral homes.

Conservation and welfare of the zoo inhabitants is the highest priority at Harinalaya, by providing them a near-natural habitat, enrichment, proper diet and veterinary care. Harinalaya aims to connect the visitors to the behavior of captive

animals, to make them understand the importance of zoo as an ex-situ conservation unit.

The purpose of the annual report is to provide information about different aspects of zoo management as well as related developmental activities. WBZA- approved Conservation Breeding programmes are proposed to be developed. The Zoo ensure best efforts to positively contribute towards conservation.

I extend my sincere thanks to Sri Dushyant Nariala, IAS, Chief Secretary, Government of West Bengal and Chairman, West Bengal Zoo Authority, Shri Manish Jain, IAS, Additional Chief Secretary, Forest Department and Shri Sandeep Sundriyal, IFS, Principal Chief Conservator of Forest and Head of Forest Force, West Bengal for their inputs and guidance.

I express my gratitude to Sri P. Kamalakanth, IFS, Additional Principal Chief Conservator of Forests & Member Secretary, West Bengal Zoo Authority, for his valuable suggestions and immense support.

I also thank all the officers and staff of the zoo for successfully managing this zoo in the best possible manner. It is through their tireless dedication that Harinalaya continues to serve as a beacon of hope and a vital link between the citizens of Kolkata and the wild wonders of our planet.

2. History of the zoo :

Harinalaya is located in the Newtown-Kolkata Metropolis in West Bengal. Harinalaya was previously categorized as Deer Park with 50 numbers of Spotted Deer. These Spotted Deer were rescued from Taratala Nature Park and released in Harinalaya on 10.02.2016 and 22.02.2016. later on, 19.02.2016, 06 numbers of Barking Deer were released in Harinalaya.

Harinalaya is currently recognized as a Mini Zoo by the Central Zoo Authority, with a total area of 6.15 hectare.

3. Vision :

This Zoo envisions providing a means for raising community awareness of ex-situ conservation and expertise on the proper maintenance and ex-situ conservation of the globally and regionally threatened fauna and flora. The zoo will serve as an

institute to research animal behavior, oversee conservation efforts, and create species-specific conservation and management plans. The zoo will work for conservation breeding and endemic species and maintain insurance population as an institution for species and maintain insurance population as an institution for species recovery of endemic species.

4. Mission :

Implement the best practices on conservation, conservation breeding, education, research and visitor experiences by connecting people to biodiversity conservation, and to serve as a conservation breeding and nature conservation center for endemic, and endangered faunal and floral species and scientific landscaping to make optimal use of the natural and park like surroundings.

5. Objective :

➤ *Conservation Breeding:*

To breed and rear the endangered species of the fauna of India and the world with the object of saving them from extinction by restocking other Zoos and eventually to enrich the depleted fauna in wild.

➤ *Conservation Education:*

To support conservation education, capacity building, awareness and community attitude development towards conservation. Animal Housing:

To ensure housing of captive animals and birds with special emphasis on health care, ethical standards, animal welfare and excellent animal husbandry.

➤ *Awareness:*

To serve the cause of Wildlife conservation by arousing interest and concern for wildlife by organizing exhibitions and seminars among public.

➤ *Conservation Research:*

To facilitate research and scientific study on animal behavior, behavioral and environmental enrichment, nutrition and reproductive biology.

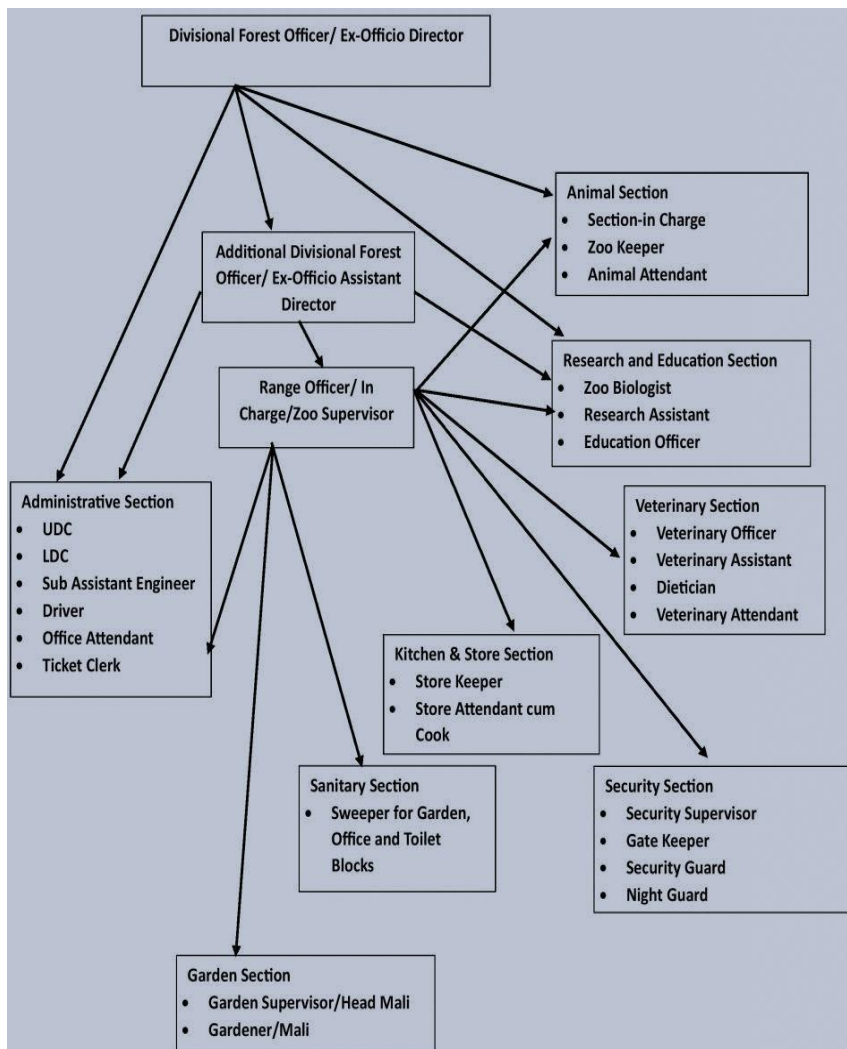
6. About Us:

Sl.No.	Particulars	Information
<i>Basic Information about the Zoo</i>		
1	Name of the Zoo	Harinalaya
2	Year of Establishment	2017
3	Address of the Zoo	Harinalaya, Action Area IIE, Newtown West Bengal 700156
4	State	West Bengal
5	Telephone Number	033 22482504
6	Fax Number	033 22482504
7	E-mail address	dcfurkolkata@gmail.com ; harinalaya2017@gmail.com
8	Website	Harinalayazoo.com
9	Distance from nearest	Airport: 6 km
		Railway Station: 7.3 km
		Bus Stand: 1 km
10	Recognition Valid upto (Date)	03-02-2029
11	Category of zoo	Mini Zoo
12	Area (in Hectares)	6.15 hectare
13	Number of Visitors (2024-2025)	Adult: 2,08,374
		Children: 18,505

		Total Visitors: 2,26,879
14	Visitor's Facilities Available in Zoo	<ul style="list-style-type: none"> • Public facilities like toilets • Sufficient number of drinking water taps • Visitor information center • Zoo education facilities • Kiosks and restaurant • Emergency telephone facility • First Aid • Wheelchair and ramps <p>Other Facilities</p> <p>Visitor Rest Shed, Child Care Room, Children's Play Equipment in children's park</p>
15	Weekly Closure Day of the Zoo	Thursday
<i>Management Personnel of the zoo</i>		
16	Name of the Officer	Sandeep Kumar Berwal, IFS
<i>Owner / Operator of the Zoo</i>		
17	Name of the Operator	Department of Forests, Government of West Bengal & West Bengal Zoo Authority

18	Address of the Operator	Aranaya Bhawan, Block- LA-10A, Sector- III, Salt Lake City, Kolkata- 700106, West Bengal
19	Contact details/Phone number of Operator	Phone: <u>+91 33 23355011</u> (EPABX), 033- 2335-8755 FAX: <u>+91 33 23350012</u>
20	E-mail address of Operator	<u>m^swbza@gmail.com</u>

7. Organizational Chart :



8. Human Resources :

<i>Manpower of the Zoo</i>				
<i>Sl.No</i>	<i>Designation</i>	<i>Employee Name</i>	<i>Email</i>	<i>Contact Number</i>
1	<i>Officer In-charge/Zoo Director</i>	<i>Sri Sandeep Kumar Berwal , IFS</i>	<i>dcfurfkolkata@gmail.com</i>	<i>(033) 2248-2504</i>
2	<i>Assistant Director</i>	<i>Mrs Ankita Bhaduri, WBFS</i>	<i>adfoharinalaya-wb@bangla.gov.in</i>	-
3	<i>Unit In-Charge/ Range Officer</i>	<i>Sri Vivek Ojha</i>	<i>harinalaya2017@gmail.com</i>	-
4	<i>Veterinarian</i>	<i>Dr. Jiban kanti Sarkar</i>	-	-
5	<i>Research Assistant</i>	<i>Ms Purbasha Acharya Chowdhury</i>	<i>purbashachowdhury02@gmail.com</i>	-
6	<i>Veterinary Assistant</i>	<i>Mr. Wasikur Rahaman</i>	<i>wasikurrock@gmail.com</i>	-
7	<i>Lower Divisional Clerk</i>	<i>Mr. Anup Kumar Mahato</i>	<i>anupmahato7679@gmail.com</i>	-
8	<i>Technical Assistant</i>	<i>Sri Sudipto Manna</i>	<i>sudiptomannat2@gmail.com</i>	-
9	<i>Zoo Keeper</i>	<i>Sri Debasish Mondal Sri Alope Paul</i>	-	-
10	<i>Animal Attendant</i>	<i>Shyamal Mahata Krishnendu Sahoo Ashis Sarkar Dhananjoy Sahis</i>	-	-

9. Capacity Building of zoo personnel :

<i>Capacity Building of zoo personnel</i>					
<i>Sl No.</i>	<i>Name</i>	<i>Designation</i>	<i>Subject matter of training</i>	<i>Date of training</i>	<i>Name of the Institution where the training attended</i>
1.	<i>Dr. Jiban Kanti Sarkar Wasikur Rahaman</i>	<i>Veterinary Officer Veterinary assistant</i>	<i>Recent Developments in Biochemical Investigation for wildlife Healthcare</i>	<i>27.04.2025</i>	<i>Zoological garden, Alipore</i>
2.	<i>Dipankar Mondal</i>	<i>Animal Section</i>	<i>Workshop on avian care and captive breeding</i>	<i>07.07.2025</i>	<i>Zoological garden, Alipore</i>
3.	<i>Dr. Jiban Kanti Sarkar Purbasha Acharyya Chowdhury Wasikur Rahaman</i>	<i>Veterinary Officer Research assistant Veterinary assistant</i>	<i>Special Health-Care Management of Tiger</i>	<i>26.07.25 - 27.07.25</i>	<i>Zoological garden, Alipore & Sundarban Wild Animal Park, Jharkhali</i>
4.	<i>Shyamal Mahata</i>	<i>Animal attendant</i>	<i>Regional Zookeeper Training Workshop for Zoo Keepers of the Eastern region</i>	<i>25.08.25 - 28.08.25</i>	<i>Tata Steel Zoological Park, Jamshedpur</i>

10. Zoo Advisory Committee- NIL

- I. Date of constitution- Not applicable
- II. Members- Not applicable
- III. Meeting Date- Not applicable

11. Health Advisory Committee :

As per the directives of the Central Zoo Authority, one Health Advisory Committee has been constituted (ref. 1106/1(9)/5M-85/2005(Pt.-2), dated. 07.03.2018).

Details of the Health Advisory Committee:

Sl. No.	Name of the member	Designation
1	Joint Director, ARD IAH & VB (R&T), Belgachia, Kolkata-37	Chairman
2	Dr. Joyjit Mitra, Specialist, (Sero-Epidemiology), RDDDL(ER), IAH&VB, Belgachia, Kolkata-37	Member
3	Dr. Debasish Chatterjee, Asst. Director, ARD (Vety), (Disease Investigation), IAH&VB, Belgachia, Kolkata-37	Member
4	Dr. Proloy Mandal, Asst. Director, ARD (Vety), IAH&VB Belgachia, Kolkata-37	Member

12. Statement of income and expenditure of the Zoo

Income (Rs.): Rs. – 1,45,46,769.00

Expense (Rs.): Rs.- 5,31,15,762.00

13. Daily feed Schedule of animals :

<i>Diet chart of Spotted Deer/ Individual /day</i>		
<i>Sl No.</i>	<i>Feed Item</i>	<i>Amount /Head (gm)</i>
1	<i>Wheat Bran</i>	<i>500</i>
2	<i>Crushed Barley</i>	<i>100</i>
3	<i>Crushed Oats</i>	<i>100</i>
4	<i>Soaked Gram</i>	<i>250</i>
5	<i>Sweet Potato</i>	<i>200</i>
6	<i>Carrot</i>	<i>200</i>
7	<i>Spinach</i>	<i>200</i>
8	<i>Red Amaranth</i>	<i>100</i>
9	<i>Beans</i>	<i>100</i>
10	<i>Soaked Corn</i>	<i>500</i>
11	<i>Common Salt</i>	<i>20</i>
12	<i>Black Salt</i>	<i>20</i>
13	<i>Green Fodder</i>	<i>1000</i>
14	<i>Watermelon (April-June)</i>	<i>2000</i>
15	<i>Jaggary (March to August)</i>	<i>200</i>
16	<i>Mineral Block</i>	<i>-</i>
17	<i>ORS</i>	

<i>Diet chart of Barking Deer/ Individual/day</i>		
<i>Sl No</i>	<i>Feed Item</i>	<i>Amount/Head (kg)</i>
1	<i>Wheat Bran</i>	<i>250</i>
2	<i>Crushed Barley</i>	<i>150</i>
3	<i>Oats</i>	<i>150</i>
4	<i>Soaked Gram</i>	<i>130</i>
5	<i>Red Potato</i>	<i>300</i>
6	<i>Carrot</i>	<i>300</i>
7	<i>Spinach</i>	<i>150</i>
8	<i>Red Amaranth</i>	<i>150</i>
9	<i>Beans</i>	<i>100</i>
10	<i>Banana</i>	<i>300</i>
11	<i>Common Salt</i>	<i>10</i>
12	<i>Black Salt</i>	<i>10</i>
13	<i>Green Grass</i>	<i>1000</i>
14	<i>Soyabean Cake</i>	<i>200</i>
15	<i>Watermelon (April-June)</i>	<i>1500</i>
16	<i>Jaggary (March to August)</i>	<i>200</i>
17	<i>Mineral Block</i>	

<i>Diet chart of Marsh Crocodile / Individual /day</i>		
<i>SL No.</i>	<i>Feed Item</i>	<i>Amount/Head (gm)</i>
1.	<i>Chicken (Summer)</i>	<i>2000</i>
2.	<i>Fish (Summer)</i>	
3.	<i>Chicken (Winter)</i>	<i>1000</i>
4.	<i>Fish (Winter)</i>	

<i>Diet chart of Saltwater Crocodile / Individual /day</i>		
<i>SL No.</i>	<i>Feed Item</i>	<i>Amount/Head (gm)</i>
1.	<i>Chicken (Summer)</i>	<i>2000</i>
2.	<i>Fish (Summer)</i>	
3.	<i>Chicken (Winter)</i>	<i>1000</i>
4.	<i>Fish (Winter)</i>	

<i>Diet chart of Grant's Zebra / Individual /day</i>		
<i>SL No.</i>	<i>Feed Item</i>	<i>Amount/Head /Day</i>
1.	<i>Wheat Bran</i>	<i>1200</i>
2.	<i>Crushed Indian Corn</i>	<i>500</i>
3.	<i>Dry Gram</i>	<i>500</i>
4.	<i>Oats</i>	<i>300</i>
5.	<i>Crushed Barley</i>	<i>500</i>
6.	<i>Carrot</i>	<i>2000</i>
7.	<i>Common Salt</i>	<i>50</i>
8.	<i>Black Salt</i>	<i>50</i>
9.	<i>Hay Grass (Alfa Alfa, Timothy, Bermuda)</i>	<i>4000</i>
10.	<i>Mineral Block</i>	
11.	<i>ORS</i>	

<i>Diet Chart Of Common Hippopotamus/Individual/ Day</i>		
<i>SL No.</i>	<i>Feed Item</i>	<i>Amount/ Head/Day</i>
1.	<i>Wheat Bran</i>	<i>5500</i>
2.	<i>Crushed Oats</i>	<i>500</i>
3.	<i>Crushed Barley</i>	<i>1000</i>
4.	<i>Soaked Gram</i>	<i>1500</i>
5.	<i>Wheat</i>	<i>500</i>
6.	<i>Linseed</i>	<i>100</i>
7.	<i>Sweet Potato</i>	<i>1500</i>
8.	<i>Cabbage</i>	<i>1500</i>
9.	<i>Carrot</i>	<i>1500</i>
10.	<i>Common Salt</i>	<i>75</i>
11.	<i>Black Salt</i>	<i>100</i>
12.	<i>Water Spinach</i>	<i>1500</i>
13.	<i>Red Amaranth</i>	<i>1500</i>
14.	<i>Green Grass</i>	<i>3000</i>

<i>Diet Chart Of Common Marmoset /Individual/ Day</i>		
<i>SL No.</i>	<i>Feed Item</i>	<i>Amount/ Head/Day</i>
1.	<i>Egg White</i>	20
2.	<i>Papaya</i>	30
3.	<i>Sprout Gram</i>	5
4.	<i>Mung Bean</i>	5
5.	<i>Alfa Alfa (Weekly Twice)</i>	20 leaves (5 gm.)
6.	<i>Banana</i>	50
7.	<i>Cucumber</i>	30
8.	<i>Watermelon</i>	30
9.	<i>Mask Melon</i>	10
10.	<i>Sapodilla</i>	10
11.	<i>Figs</i>	5
12.	<i>Java Apple</i>	10
13.	<i>Guava</i>	20
14.	<i>Apple</i>	15
15.	<i>Orange</i>	15
16.	<i>Grapes</i>	10
17.	<i>Beetroot</i>	15
18.	<i>Broccoli</i>	5
19.	<i>Carrot</i>	5
20.	<i>Sweet Corn</i>	5
21.	<i>Coconut Water</i>	
22.	<i>Almond</i>	1
23.	<i>Walnut</i>	3
24.	<i>Mealworm</i>	5
25.	<i>New World Primate Diet</i>	5
26.	<i>Cricket (Weekly Once)</i>	2 Pcs. (0.8 gm.)
27.	<i>Grasshopper (Weekly Once)</i>	2 Pcs. (0.6 gm.)
28.	<i>Hibiscus (Weekly Once)</i>	2 Pcs.
29.	<i>Turmeric</i>	
30.	<i>Mango</i>	10

<i>Diet Chart Of Golden Headed Lion Tamarin /Individual/ Day</i>		
<i>SL No.</i>	<i>Feed Item</i>	<i>Amount/ Head/Day</i>
1.	<i>Egg White</i>	20
2.	<i>Papaya</i>	30
3.	<i>Sprout Gram</i>	5
4.	<i>Mung Bean</i>	5
5.	<i>Alfa Alfa (Weekly Twice)</i>	20 leaves (5 gm.)
6.	<i>Banana</i>	50
7.	<i>Cucumber</i>	30
8.	<i>Watermelon</i>	30
9.	<i>Mask Melon</i>	10
10.	<i>Sapodilla</i>	10
11.	<i>Figs</i>	5
12.	<i>Java Apple</i>	10
13.	<i>Guava</i>	20
14.	<i>Apple</i>	15
15.	<i>Orange</i>	15
16.	<i>Grapes</i>	10
17.	<i>Beetroot</i>	15
18.	<i>Broccoli</i>	5
19.	<i>Carrot</i>	5
20.	<i>Sweet Corn</i>	5
21.	<i>Coconut Water</i>	
22.	<i>Almond</i>	1
23.	<i>Walnut</i>	3
24.	<i>Mealworm</i>	5
25.	<i>New World Primate Diet</i>	5
26.	<i>Cricket (Weekly Once)</i>	2 Pcs. (0.8 gm.)
27.	<i>Grasshopper (Weekly Once)</i>	2 Pcs. (0.6 gm.)
28.	<i>Hibiscus (Weekly Once)</i>	2 Pcs.
29.	<i>Turmeric</i>	
30.	<i>Mango</i>	10

<i>Diet Chart Of White Lipped Tamarin /Individual/ Day</i>		
<i>SL No.</i>	<i>Feed Item</i>	<i>Amount/ Head/Day</i>
1.	Egg White	30
2.	Papaya	40
3.	Sprout Gram	10
4.	Mung Bean	10
5.	Alfa Alfa (Weekly Twice)	20 leaves (5 gm.)
6.	Banana	100
7.	Cucumber	40
8.	Watermelon	30
9.	Mask Melon	20
10.	Sapodilla	20
11.	Figs	10
12.	Java Apple	25
13.	Guava	25
14.	Apple	30
15.	Orange	25
16.	Grapes	25
17.	Beetroot	20
18.	Broccoli	5
19.	Carrot	15
20.	Sweet Corn	5
21.	Coconut Water	
22.	Almond	1
23.	Walnut	5
24.	Mealworm	8
25.	New World Primate Diet	10
26.	Cricket (Weekly Once)	2 Pcs. (0.8 gm.)
27.	Grasshopper (Weekly Once)	2 Pcs. (0.6 gm.)
28.	Hibiscus (Weekly Once)	2 Pcs.
29.	Mango	20

<i>Diet Chart Of Hoolock Gibbon /Individual/ Day</i>		
<i>SL No.</i>	<i>Feed Item</i>	<i>Amount/ Head/Day</i>
1.	Egg White	30
2.	Papaya	40
3.	Sprout Gram	10
4.	Mung Bean	10
5.	Alfa Alfa (Weekly Twice)	20 leaves (5 gm.)
6.	Banana	100
7.	Cucumber	40
8.	Watermelon	30
9.	Mask Melon	20
10.	Sapodilla	20
11.	Figs	10
12.	Java Apple	25
13.	Guava	25
14.	Apple	30
15.	Orange	25
16.	Grapes	25
17.	Beetroot	20
18.	Broccoli	5
19.	Carrot	15
20.	Sweet Corn	5
21.	Coconut Water	
22.	Almond	1
23.	Walnut	5
24.	Mealworm	8
25.	New World Primate Diet	10
26.	Cricket (Weekly Once)	2 Pcs. (0.8 gm.)
27.	Grasshopper (Weekly Once)	2 Pcs. (0.6 gm.)
28.	Hibiscus (Weekly Once)	2 Pcs.
29.	Mango	20

<i>Diet Chart Of Pheasant /Individual/ Day</i>		
<i>SL No.</i>	<i>Feed Item</i>	<i>Amount/ Head/Day</i>
1.	<i>Crushed Maize</i>	<i>10</i>
2.	<i>Onion finely chopped</i>	<i>5</i>
3.	<i>Garlic finely chopped</i>	<i>5</i>
4.	<i>Cabbage</i>	<i>5</i>
5.	<i>Radish leaves</i>	<i>5</i>
6.	<i>Carrots and Carrot Leaves</i>	<i>5</i>
7.	<i>Beetroot</i>	<i>5</i>
8.	<i>Spinach</i>	<i>5</i>
9.	<i>Mustard green</i>	<i>5</i>
10.	<i>Red Amaranth</i>	<i>5</i>
11.	<i>Radish</i>	<i>5</i>
12.	<i>Ash Gourd</i>	<i>5</i>
13.	<i>Mutton heart (Keema/chopped)/ Chicken chopped</i>	<i>20</i>
14.	<i>Wheat husk</i>	<i>15</i>
15.	<i>Paddy husk</i>	<i>15</i>
16.	<i>Boiled egg</i>	<i>50</i>
17.	<i>Sattu Balls</i>	<i>10</i>
18.	<i>Mealworm</i>	<i>15</i>

<i>Diet Chart Of Sugar glider/Individual/ Day</i>		
1	<i>Cucumber</i>	<i>10</i>
2	<i>Carrot</i>	<i>10</i>
3	<i>Apple</i>	<i>10</i>
4	<i>Cerelac</i>	<i>5</i>

<i>Diet Chart Of Water Birds /Individual/ Day</i>		
<i>SL No.</i>	<i>Feed Item</i>	<i>Amount/ Head/Day</i>
1.	<i>Maize Dust</i>	<i>65</i>
2.	<i>Paddy</i>	<i>65</i>
3.	<i>Boiled Rice</i>	<i>65</i>
4.	<i>Water Spinach</i>	<i>65</i>
5.	<i>Red Amaranth</i>	<i>30</i>
6.	<i>Bajra</i>	<i>65</i>
7.	<i>Chattu</i>	<i>65</i>
8.	<i>Cabbage</i>	<i>50</i>
9.	<i>Beans</i>	<i>65</i>
10.	<i>Fingerline Fish (Only for Stork)</i>	<i>250</i>

Diet chart of Macaw/Individual /Day

	Feed Item	Amt/h/d		Feed Item	Amt/h/d
VEGETABLES	Ladies Finger	10	NUTS	Roasted Peanuts	5
	Bitter gourd	5		Brazil Nuts (2/week)	5
	Pumpkin	5		Macadamia Nuts (2/week)	2.5
	Carrot	5		Hazelnuts (2/week)	2.5
	Raw Green Chillies	10		Almond	2
	Red, Yellow, Green Bell Pepper	10		Pecan Nuts	1.5
	Corn Cob	10		Red Cashewnut	2.5
	Sweet Potato	10		Walnut with shell	30
	Yard-long Bean	5		SEEDS	Sunflower seeds
	Gourd	5	Pumpkin Seeds		5
	Pointed Gourd	5	Watermelon Seeds		5
	Spinach	5	Canary Seeds		15
	Broccoli	5	Paddy		2.5
	Beet Root	5	White Millet		2
	SOFT FOOD	Boiled Egg	10	WORM	Red Millet
Brown Rice		5	Yellow Millet		2
Sprout			Hulled Oats		5
Sunflower		5	Safflower		2.5
Gram		5	Wheat		2.5
Mung Bean		5	TREATS		Mealworm
Corn		5		Hibiscus Petal	1pc
Chikpea		5		Neem Leaves	2pc
Whole Yellow Peas		5		Basil Leaves	2pc
Wheat		5	Kalmegh	2pc	
FRUITS	Guava	15	SUPPL EMEN TS	Calcium (10gm in 1 kg)	
	Papaya	15		Mineral (5gm in 1 Kg)	
	Banana	5		Black Tea	
	Cucumber	5			
	Sugar Cane	10			
	Java Apple	10			
	Mango	10			
	Coconut (Weekly Once)				
	Sapodila	5			
	Watermelon	10			
	Muskmelon	10			
	Litchi	10			
	Pomegranate	10			
	Figs	10			
	Yam	10			
	Apple	10			
	Orange	5			
	Grapes	10			

Dietchart of Amazon Parrot/Individual /Day

<i>Diet chart of Amazon Parrot / Head/Day</i>				<i>Feed Item</i>	<i>Amount/Head (gm)</i>	
	<i>Feed Item</i>	<i>Amount/Head (gm)</i>				
VEGETABLES	Ladies Finger	10	N U T S	Roasted Peanuts	5	
	Bitter gourd	5		Brazil Nuts (2/week)	5	
	Pumpkin	5		Macadamia Nuts (2/week)	2.5	
	Carrot	5		Hazelnuts (2/week)	2.5	
	Raw Green Chillies	10		Almond	2	
	Red, Yellow, Green Bell Pepper	10		Pecan Nuts	1.5	
	Corn Cob	10		Red Cashewnut	2.5	
	Sweet Potato	10		Walnut with shell	30	
	Yard-long Bean	5				
	Gourd	5		Sunflower seeds	2	
	Pointed Gourd	5		Pumpkin Seeds	2	
	Spinach	5		Watermelon Seeds	2	
	Broccoli	5		Canary Seeds	25	
	Beet Root	5		Paddy	2	
	SOFT FOOD	Boiled Egg		5	S E E D S	White Millet
Brown Rice		5	Red Millet	1		
Sprout			Yellow Millet	1		
Sunflower		3	Hulled Oats	2		
Gram		3	Safflower	2		
Mung Bean		3	Wheat	2		
Corn		3				
Chikpea		3	Mealworm	2		
Whole Yellow Peas		3				
Wheat		3				
FRUITS	Guava	15	W O R M	Hibiscus Petal	1pc	
	Papaya	15			Neem Leaves	2pc
	Banana	5			Basil Leaves	2pc
	Cucumber	5	T R E A T S	Kalmegh	2pc	
	Sugar Cane	10				
	Java Apple	10			Calcium (10gm in 1 kg)	
	Mango	10			Mineral (5gm in 1 Kg)	
	Coconut (Weekly Once)				Rex Oil (2.5ml in 1 kg)	
	Sapodila	5			Black Tea (gm)	
	Watermelon	10				
	Muskmelon	10				
	Litchi	10				
	Pomegranate	10				
	Figs	10				
	Yam	10				
Apple	10					
Orange	5					

Diet chart of Grey Parrot/Individual /Day

Diet chart of Grey Parrot / Head/Day				Feed Item	Amount/Head (gm)	
	Feed Item	Amount/Head (gm)				
VEGETABLES	Ladies Finger	5	NUTS	Roasted Peanuts	5	
	Bitter gourd	5		Brazil Nuts (2/week)	5	
	Pumpkin	5		Macadamia Nuts (2/week)	2.5	
	Carrot	5		Hazelnuts (2/week)	2.5	
	Raw Green Chillies	5		Almond	2	
	Red , Yellow, Green Bell Pepper	5		Pecan Nuts	1.5	
	Corn Cob	5		Red Cashewnut	2.5	
	Sweet Potato	5		Walnut with shell	30	
	Yard-long Bean	5		Palm nut	15	
	Gourd	5				
	Pointed Gourd	5		Sunflower seeds	10	
	Spinach	5		Pumpkin Seeds	2.5	
	Broccoli	5		Watermelon Seeds	2.5	
	Beet Root	5		Canary Seeds	8	
				Paddy	2	
		White Millet	2			
		Red Millet	2			
		Yellow Millet	2			
		Hulled Oats	4			
		Safflower	4			
		Wheat	2			
SOFT FOOD	Boiled Egg	10	SEEDS			
	Brown Rice	5				
	Sprout					
	Sunflower	3				
	Gram	3				
	Mung Bean	3				
	Corn	3		WO RM	Mealworm	2
	Chikpea	3				
	Whole Yellow Peas	3		TREATS	Hibiscus Petal	1pc
	Wheat	3			Neem Leaves	2pc
		Basil Leaves	2pc			
			Kalmegh	2pc		
FRUITS	Guava	15	SUP PLE ME NTS	Calcium (10gm in 1 kg)		
	Papaya	15		Mineral (5gm in 1 Kg)		
	Banana	5				
	Cucumber	5				
	Sugar Cane	10		Black Tea (gm)		
	Java Apple	10				
	Mango	10				
	Coconut (Weekly Once)					
	Sapodila	5				
	Watermelon	10				
	Muskmelon	10				
	Litchi	10				
	Pomegranate	10				
	Figs	10				
	Yam	10				
Apple	10					
Orange	5					
Grapes	10					

Diet chart of Eclectus Parrot/Individual /Day

<i>Diet chart of Eclectus Parrot / Head/Day</i>				<i>Feed Item</i>	<i>Amount/Head (gm)</i>
	<i>Feed Item</i>	<i>Amount/Head (gm)</i>			
VEGETABLES	<i>Ladies Finger</i>	10	NUTS	<i>Roasted Peanuts</i>	5
	<i>Bitter gourd</i>	5		<i>Brazil Nuts (2/week)</i>	5
	<i>Pumpkin</i>	5		<i>Macadamia Nuts (2/week)</i>	2.5
	<i>Carrot</i>	5		<i>Hazelnuts (2/week)</i>	2.5
	<i>Raw Green Chillies</i>	10		<i>Almond</i>	2
	<i>Red , Yellow, Green Bell Pepper</i>	10		<i>Pecan Nuts</i>	1.5
	<i>Corn Cob</i>	10		<i>Red Cashewnut</i>	2.5
	<i>Sweet Potato</i>	10		<i>Walnut with shell</i>	30
	<i>Yard-long Bean</i>	5		<i>Sunflower seeds</i>	2
	<i>Gourd</i>	5		<i>Pumpkin Seeds</i>	2
	<i>Pointed Gourd</i>	5	<i>Watermelon Seeds</i>	2	
	<i>Spinach</i>	5	<i>Canary Seeds</i>	25	
	<i>Broccoli</i>	5	<i>Paddy</i>	2	
	<i>Beet Root</i>	5	<i>White Millet</i>	1	
	SOFT FOOD	<i>Boiled Egg</i>	5	SEEDS	<i>Red Millet</i>
<i>Brown Rice</i>		5	<i>Yellow Millet</i>		1
<i>Sprout</i>			<i>Hulled Oats</i>		2
<i>Sunflower</i>		3	<i>Safflower</i>		2
<i>Gram</i>		3	<i>Wheat</i>		2
<i>Mung Bean</i>		3			
<i>Corn</i>		3			
<i>Chikpea</i>		3			
<i>Whole Yellow Peas</i>		3			
<i>Wheat</i>		3			
<i>Papaya</i>		15			
<i>Banana</i>		5			
<i>Cucumber</i>		5			
<i>Sugar Cane</i>		10			
<i>Java Apple</i>		10			
<i>Mango</i>		10			
<i>Coconut (Weekly Once)</i>					
<i>Sapodila</i>		5			
<i>Watermelon</i>		10			
<i>Muskmelon</i>		10			
<i>Litchi</i>		10			
<i>Pomegranate</i>		10			
<i>Figs</i>		10			
<i>Yam</i>		10			
<i>Apple</i>		10			
<i>Orange</i>	5				
<i>Grapes</i>	10				
			WORM	<i>Mealworm</i>	2
			TREAT	<i>Hibiscus Petal</i>	1pc
				<i>Neem Leaves</i>	2pc
				<i>Basil Leaves</i>	2pc
			SUPP LEME NTS	<i>Calcium (10gm in 1 kg)</i>	
				<i>Mineral (5gm in 1 Kg)</i>	
				<i>Rex Oil (2.5ml in 1 kg)</i>	
				<i>Black Tea</i>	

Diet chart of Cockatoo/Individual /Day

Diet chart of Cockatoo / Head/Day			Diet chart of Cockatoo / Head/Day			
	Feed Item	Amount/Head (gm)		Feed Item	Amount/Head (gm)	
VEGETABLES	Ladies Finger	10	NUTS	Roasted Peanuts	5	
	Bitter gourd	5		Almond	2	
	Pumpkin	5				
	Carrot	5	SEEDS	Sunflower seeds	2	
	Raw Green Chillies	10		Pumpkin Seeds	2	
	Red, Yellow, Green Bell Pepper	10		Watermelon Seeds	2	
	Corn Cob	10		Canary Seeds	25	
	Sweet Potato	10		Paddy	2	
	Yard-long Bean	5		White Millet	1	
	Gourd	5		Red Millet	1	
	Pointed Gourd	5		Yellow Millet	1	
	Spinach	5		Hulled Oats	2	
	Broccoli	5		Safflower	2	
	Beet Root	5				
			WORM	Mealworm	2	
SOFT FOOD	Boiled Egg	5	TREATS	Hibiscus Petal	1pc	
	Brown Rice	5		Neem Leaves	2pc	
	Sprout			Basil Leaves	2pc	
	Sunflower	3		Kalmegh	2pc	
	Gram	3				
	Mung Bean	3	SUPPLEMENTS	Calcium (10gm in 1 kg)		
	Corn	3		Mineral (5gm in 1 Kg)		
	Chikpea	3		Rex Oil (2.5ml in 1 kg)		
	Whole Yellow Peas	3			Black Tea	
	Wheat	3				
	Sapodila	5				
	Watermelon	10				
	Muskmelon	10				
	Litchi	10				
	Pomegranate	10				
	Figs	10				
	Yam	10				
	Apple	10				
	Orange	5				
	Grapes	10				

Note: The Diet chart of Animals has been revised and approved by Health Advisory committee and West Bengal Zoo Authority through a review meeting on Animal Health, Diet, Biosecurity of Harinalaya, Newtown, Kolkata held on 21st May, 2024 at Harinalaya. Memo no: 797/1-3/Animal, dated : 05.06.2024 from DCF/URF office. New Diet chart shall be followed as per prevailing rules and norms.

14. Vaccination Schedule of animals :

<u>Group</u>	<u>Vaccine</u>	<u>Dosage</u>	<u>Comments</u>
Callitrichids (marmosets and tamarins)	Tetanus(adsorbed human product or equine product)	0.1 mL, IM, every 5 years	
	Rabies (killed vaccine)	1.0 mL, SC, annually	Only if there is a risk of exposure in the facility.
Cebidae (capuchin)	Tetanus (same products as other species)	0.5 mL, IM, every 5 years	
	Rabies (killed vaccine)	1.0 mL, IM or SC, annually	Only if there is a risk of exposure in the facility
Apes (gibbons)	Tetanus (same products as for other species)	0.5 mL, IM, every 5 years	
	Rabies (killed vaccine)	1.0 mL, IM or SC, annually	
	Measles (MMR vaccine)	IM	First dose at 4-6 months old, booster in 6 months, then

			at 6-7 years. Do not vaccinate pregnant animals. This vaccine may lead to a false-positive intradermal TB test.
Birds (Pheasants)	RD	*RD Vaccine -F1 strain at the age of 7-8 days,I/O or I/N *RD vaccine booster -LaSota Strain at the age of 28-30 days, Drinking water *RD Vaccine booster-R2B Mesogenic Strain at more than 8 week or older age,0.5ml,I/M	RD Vaccine - LaSota repeated every 6month interval
	Avian Pasteurellosis	1.0 mL, IM or SC, every 6 months	
Water Birds	Duck Plague	1.0 mL, IM or SC, every 6 months	1 st dose at 5 th to 6 th week (repeat after 6 month at epidemic zone) and then once in a year.

	<i>Duck Cholera</i>	<i>1.0 mL, IM or SC, every 6 months</i>	
<i>Primates, Zebra</i>	<i>Tetanus Toxoid</i>		<i>As and when required</i>
<i>Mostly all Herbivores, Primates & Avian (selective)</i>	<i>Chemoprophylaxis for Tuberculosis</i>	<i>July-October</i>	<i>May repeat if necessary</i>
<i>Cervid</i>	<i>Haemorrhagic Septicaemia</i>	<i>Nov-December</i>	<i>Once in a year (If incident of outbreak confirmed.)</i>
<i>Bird</i>	<i>FD RD R2B</i>	<i>Nov-January</i>	<i>Once in a year</i>
<i>Bird</i>	<i>RDB1 Strain</i>		<i>During Epidemic</i>
<i>Bird</i>	<i>FDRDF Strain/La-sota</i>		<i>For Newly arrival birds</i>
<i>Feline</i>	<i>Canine Distemper in Feline</i>	<i>June-July & December-January</i>	<i>Twice in a year</i>
<i>Feline</i>	<i>Vaccination against Feline Panleukopenia Virus, Herpes Virus, Calci Virus,</i>	<i>Jan-Feb</i>	<i>Once in a year</i>
<i>Canine</i>	<i>DHPPIL</i>	<i>Feb-March</i>	<i>Once in a year</i>
<i>Canine & Feline</i>	<i>Rabies</i>	<i>As per pre-bite schedule</i>	<i>Once in a year</i>

15. De-worming Schedule of Animals :

Species/ Class	Drugs used	De-worming Schedule	Variation	Dose
Herbivores	<ul style="list-style-type: none"> Albendazole Fenbendazole Ivermectin 	<ul style="list-style-type: none"> Quarterly February May 	<ul style="list-style-type: none"> On specific diagnosis for Helminthiasis in particular animal/s 	<ul style="list-style-type: none"> Albendazole: 5mg/kg body wt. Fenbendazole: 5mg/kg
	<ul style="list-style-type: none"> Oxyclozanide Levamisole 	August, November ➤ As single dose		Body wt. <ul style="list-style-type: none"> Ivermectin: 0.2 mg/kg body wt. Oxyclozanide: 10-15 mg/kg body wt. Levamisole: 7.5 mg/kg body wt.
Carnivores	<ul style="list-style-type: none"> Albendazole Fenbendazole Levamisole Praziquantel Pyrantel Pamoate/Embonate Febantel 	<ul style="list-style-type: none"> Quarterly (February, May, August, November) Once a day for 3 days 	<ul style="list-style-type: none"> On specific diagnosis for Helminthiasis in particular animal/s Combination of 2 or more drugs 	<ul style="list-style-type: none"> Albendazole: 10-15 mg/kg body wt. Fenbendazole: 50 mg/kg body wt. Levamisole: 7.5 mg/kg body wt. Praziquantel: 7.5 mg/kg body wt.
Primates	<ul style="list-style-type: none"> Albendazole Fenbendazole Ivermectin Oxyclozanide Levamisole 	<ul style="list-style-type: none"> Quarterly (February, May, August, November) As single dose 	<ul style="list-style-type: none"> On specific diagnosis for Helminthiasis in particular animal/s Combination of 2 or more drugs 	<ul style="list-style-type: none"> Albendazole: 25 mg/kg body wt. Fenbendazole: 20-50 mg/kg body wt. Ivermectin: 0.2 mg/kg body wt. Oxyclozanide Levamisole: 5-10 mg/kg body wt. Praziquantel: 15-40 mg/kg body wt. Pyrantel Pamoate: 1mg/kg body wt.

Birds	<ul style="list-style-type: none"> • Albendazole • Fenbendazole • Levamisole • Praziquantel • Piperazine 	<ul style="list-style-type: none"> • Quarterly (February, May, August, November) • As single dose 	<ul style="list-style-type: none"> • On specific diagnosis for Helminthiasis in particular animal/s • Combination of 2 or more drugs 	<ul style="list-style-type: none"> • Fenbendazole: 7.5 mg/kg body wt. • Levamisole: 7.5 mg/kg body wt. • Praziquantel: 10-15 mg/kg body wt.
Reptiles	<ul style="list-style-type: none"> • Albendazole • Fenbendazole • Ivermectin 	<ul style="list-style-type: none"> • Initially in 7 days interval • Quarterly (February, May, August, November) • As single dose 	<ul style="list-style-type: none"> • On specific diagnosis for Helminthiasis in particular animal/s • Combination of 2 or more drugs 	<ul style="list-style-type: none"> • Albendazole • Fenbendazole: 25-50 mg/kg body wt. • Ivermectin: 0.2 mg/kg body wt. S/c ly Inj.

Note: Deworming and Vaccination schedule of Animals is approved by Health Advisory committee and West Bengal Zoo Authority through a review meeting on Animal Health, Diet, Biosecurity of Harinalaya, Newtown, Kolkata held on 21st May, 2024 at Harinalaya. Memo no: 797/1-3/Animal, dated : 05.06.2024 of DCF/URF office.

16. Disinfection Schedule :

Name of disinfectant	Dosage of disinfectant	Application
Vircon S	10 gm /l lit water	Weekly once spray all over the enclosures
Virocid	5 ml /l lit water	Weekly once spray all over the enclosures
Mixture of CH ₃ COOH, CuSO ₄ , H ₂ O	CH ₃ COOH - 400ml , H ₂ O- 600ml CuSO ₄ - 50gm In 1 lit Solution	Whenever needed
Potassium Permanganate	2% Potassium Permanganate	Foot Bath, Cleaning and disinfection of Equipment daily.

Note: Disinfection schedule of Animal Enclosures is approved by Health Advisory committee and West Bengal Zoo Authority through a review meeting on Animal Health, Diet, Biosecurity of Harinalaya, Newtown, Kolkata held on 21st May, 2024 at Harinalaya. Memo no: 797/1-3/Animal, dated : 05.06.2024 of DCF/URF office.

17. Health Check-up of employees for zoonotic diseases :

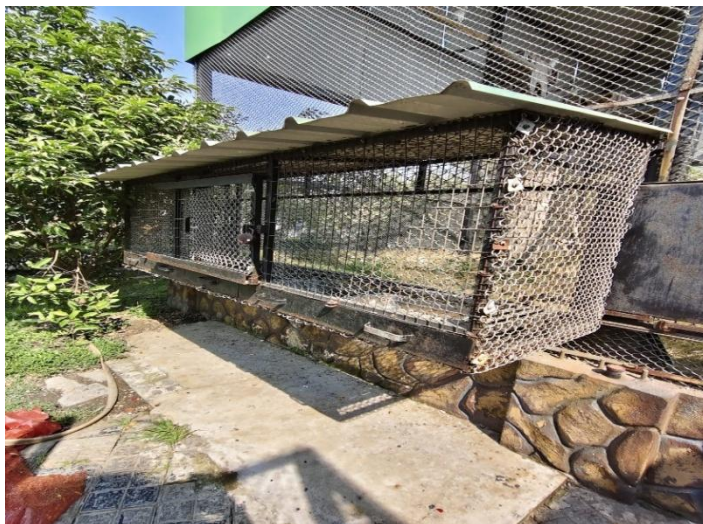
Health Check-up of the following disease are under process in collaboration with Bidhannagar Sub Divisional Hospital, Salt lake, Kolkata since 12.07.2025:

- 1) Tuberculosis Bacteria test
- 2) Brucellosis Antigen test
- 3) Leptospirosis test
- 4) Trypanosomiasis test
- 5) Toxoplasmosis test
- 6) Anthrax vaccine
- 7) Anti-Rabies Vaccine
- 8) Hepatitis B vaccine
- 9) Deworming
- 10) Chest x-ray

- 11) Complete blood count
- 12) Blood pressure
- 13) Blood sugar

18. Development Works carried out in the zoo during the year :

- 1) Enrichment works and feeding platform of Toucan aviary
- 2) Land development and drainage work of Red-tail Monkey enclosure.
- 3) Enrichment work of tiger enclosure
- 4) Renovation work of washing and disinfection room at animal food store cum kitchen block
- 5) Extension works of brick works for service pathway from lion enclosure to emergency exit gate.
- 6) Renovation work for rest room of participates with toilet of admin block.
- 7) Extension of service path by concrete pavement from hippo enclosure to emergency gate beside lion enclosure (L-650m W-3.8m)
- 8) Renovation work for rest room of staff with toilet.
- 9) Landscape work near carnivore section.
- 10) Landscape work near primate zone.
- 11) Additional work for Hoolock Gibbon enclosure and night shelter.



Enrichment works and feeding platform of toucan aviary



Land development and drainage work for Red-tail Monkey Enclosure



Enrichment work of Tiger enclosure



Renovation work of washing and disinfection area at animal food store cum kitchen block



Extension work of brick works for service pathway from lion enclosure to emergency exit gate



Renovation work for rest room of participants with toilet of admin block



Extension of service path by concrete pavement from hippo enclosure to emergency gate beside lion enclosure (L-650m W-3.8m)



Landscape work near Carnivore section



Landscape work near primate zone



Additional work for Hoolock gibbon enclosure and night shelter

19. Education and Awareness programmes during the year:

<i>SL No.</i>	<i>DATE</i>	<i>SCHOOL NAME</i>	<i>STUDENTS</i>	<i>TEACHERS</i>
<i>1</i>	<i>21.11.2025</i>	<i>Little Friend School</i>	<i>24</i>	<i>12</i>
<i>2</i>	<i>21.11.2025</i>	<i>Sri Ram Narayana Singh Memorial High School</i>	<i>33</i>	<i>6</i>
<i>3</i>	<i>24.11.2025</i>	<i>The Heritage School</i>	<i>65</i>	<i>10</i>
<i>4</i>	<i>24.11.2025</i>	<i>Howard memorial School</i>	<i>17</i>	<i>6</i>
<i>5</i>	<i>28.11.2025</i>	<i>Kidzee</i>	<i>26</i>	<i>7</i>
<i>6</i>	<i>01.12.2025</i>	<i>Howard memorial School</i>	<i>24</i>	<i>3</i>
<i>7</i>	<i>03.12.2025</i>	<i>St. Stephen School</i>	<i>30</i>	<i>7</i>
<i>8</i>	<i>03.12.2025</i>	<i>Howard memorial School</i>	<i>28</i>	<i>11</i>
<i>9</i>	<i>09.12.2025</i>	<i>APJ School</i>	<i>86</i>	<i>20</i>
<i>10</i>	<i>09.12.2025</i>	<i>GD Goyenka</i>	<i>198</i>	<i>8</i>

11	09.12.2025	<i>Shirakole Yudhishtir Nanilal High School</i>	40	6
12	09.12.2025	<i>The Nobel Mission School</i>	75	26
13	10.12.2025	<i>Mangalan School</i>	33	7
14	10.12.2025	<i>Euro Kids</i>	4	4
15	10.12.2025	<i>Mordern English Academy</i>	55	3
16	10.12.2025	<i>Firstcry</i>	25	19
17	12.12.2025	<i>Little Montessori School</i>	0	20
18	12.12.2025	<i>Jr. Delhi School</i>	15	19
19	12.12.2025	<i>Sri Chaitanya Techno School</i>	53	10
20	12.12.2025	<i>Maheswari Sishu Vihar</i>	80	10
21	12.12.2025	<i>I School</i>	21	7
22	12.12.2025	<i>KAV Girls</i>	38	21
23	12.12.2025	<i>Budge Budge Ucchya Balika Vidyalaya</i>	48	6
24	13.12.2025	<i>Little Millennium</i>	14	22
25	13.12.2025	<i>Masonic Montessori School</i>	0	13
26	15.12.2025	<i>Adams School</i>	210	10
27	13.12.2025	<i>Doon Techno School</i>	63	11
28	17.12.2025	<i>Euro Kids</i>	45	7
29	17.12.2025	<i>Adamas School</i>	168	12
30	17.12.2025	<i>Narayana School</i>	21	7
31	19.12.2025	<i>Kidzee</i>	61	20
32	19.12.2025	<i>Techno india group public school</i>	19	25
33	19.12.2025	<i>Lake point school</i>	22	10

34	19.12.2025	<i>Kidzee</i>	30	65
35	20.12.2025	<i>Swarnim International School</i>	49	7
36	20.12.2025	<i>Maria Memorial High School</i>	40	5
37	20.12.2025	<i>Maria Memorial High School</i>	75	5
38	23.12.2025	<i>Apeejay School</i>	40	8
39	23.12.2025	<i>Bges School</i>	15	4
40	16.12.2025	<i>Chhailavi FP School</i>	15	7
41	03.01.2026	<i>Narayana School</i>	135	27
42	06.01.2026	<i>Adams School</i>	75	10
43	06.01.2026	<i>Hatisala AJSK madrasa</i>	59	10
44	09.01.2026	<i>IEM Public School</i>	115	11
45	09.01.2026	<i>Sunrise School</i>	65	5
46	10.01.2026	<i>Iqra Public School</i>	91	15
47	10.01.2026	<i>Swarnim International School</i>	47	5
48	10.01.2026	<i>Rishi Arabinda School</i>	385	15
49	12.01.2026	<i>St. Augustin Day School Girls</i>	41	9
50	13.01.2026	<i>Star Kids</i>	69	14
51	13.01.2026	<i>Maheswari School</i>	300	28
52	14.01.2026	<i>Narayana School</i>	20	5
53	16.01.2026	<i>Kidzee School</i>	64	20
54	16.01.2026	<i>Springdale Kindergarten School</i>	12	7
55	16.01.2026	<i>Time Kids School</i>	27	9
56	16.01.2026	<i>The Edukids School</i>	15	8
57	17.01.2026	<i>Narayana School</i>	40	9
58	17.01.2026	<i>Jyotirmoyee Public school</i>	132	7

59	17.01.2026	<i>Kidzee</i>	18	5
60	17.01.2026	<i>Maria's Day School</i>	78	15
61	19.01.2026	<i>Kdzee</i>	28	9
62	20.01.2026	<i>Airforce Barrackpore</i>	29	12
63	21.01.2026	<i>Agrasain Boys School</i>	80	10
64	24.01.2026	<i>Iqra Public School</i>	82	12
65	25.01.2026	<i>Tuki Taki Art Centre</i>	65	5
66	28.02.2026	<i>Kapasias FP School</i>	45	18
67	30.01.2026	<i>Kid Zee</i>	33	12
68	31.01.2026	<i>Iqra Public School</i>	215	13
69	31.01.2026	<i>Kid Zee</i>	18	13
70	01.02.2026	<i>Kid Zee</i>	22	55
71	03.02.2026	<i>Orchid School</i>	64	14
72	03.02.2026	<i>Rainbow School</i>	33	28
73	03.02.2026	<i>Pratt Memorial School</i>	99	15
74	04.02.2026	<i>DPS</i>	355	15
75	04.02.2026	<i>KV Barrackpore</i>	85	5
76	04.02.2026	<i>Agrasain balika Siksha Sadan</i>	71	6
77	04.02.2026	<i>Rose Bank Educare High School</i>	17	7
78	06.02.2026	<i>Triveni Academy</i>	44	7
79	06.02.2026	<i>Ramkrishna Vidhyapith</i>	44	10
80	06.02.2026	<i>Philomel School</i>	80	15
81	07.02.2026	<i>Makoons Pre-School</i>	60	6
82	07.02.2026	<i>Orchid School</i>	40	3
83	07.02.2026	<i>Bodhichariya SR. SEC. School</i>	157	17

84	07.02.2026	<i>Jyoti Shisu vihar</i>	86	15
85	10.02.2026	<i>Kangaroo Kids</i>	14	20
86	10.02.2026	<i>KV Saltlake</i>	155	9
87	10.02.2026	<i>KV Fort William</i>	45	6
88	11.02.2026	<i>St. Augustin Day School</i>	80	7
89	11.02.2026	<i>DPS</i>	285	15
90	11.02.2026	<i>KV Saltlake</i>	140	10
91	11.02.2026	<i>Howard memorial School</i>	32	8
92	13.02.2026	<i>Pride International School</i>	60	4
93	13.02.2026	<i>Naba Kishalay Education Centre</i>	20	3
94	13.02.2026	<i>KV Fort William</i>	64	4
95	13.02.2026	<i>Eastern Point School</i>	118	6
96	13.02.2026	<i>Narayana School</i>	22	5
97	14.02.2026	<i>KV Fort William</i>	60	8
98	16.02.2026	<i>Delhi Public School</i>	349	28
99	16.02.2026	<i>KV Fort William</i>	65	4
100	16.02.2026	<i>KV Saltlake</i>	166	8
101	17.02.2026	<i>Delhi Public School</i>	331	20
102	18.02.2026	<i>Delhi Public School</i>	83	16
103	18.02.2026	<i>Kid Zee</i>	33	13
104	20.02.2026	<i>Delhi Public School</i>	224	26
105	20.02.2026	<i>Delhi Public School</i>	316	17
106	24.02.2026	<i>Delhi Public School</i>	262	19
107	27.02.2026	<i>Agrasain balika Siksha Sadan</i>	80	8

20. Important Events and happenings :

1) Celebration of World Environment Day – 5th June 2025



2) Celebration of Children's Day - 14th November 2025



21. Seasonal special arrangements for upkeep of animals

A. Care for animals during summer :

- ❖ *Using Sprinkler time to time to all primate's enclosures and aviaries to minimize the heat stress.*
- ❖ *Hanging of Khas-khas curtain and gunny bags at the particular sites to evade scorching heat and sprinkle water to khas-khas time to time.*
- ❖ *Providing ORS and easily digestible feed to all animals*
- ❖ *Providing more shades for the animals with organic material.*
- ❖ *To reduce heat stress using air cooler in Primate's enclosure.*
- ❖ *Sprinkle water to the paddock of Giraffe and Zebra enclosure weekly twice.*
- ❖ *Using water hyacinth (with proper maintenance) in both saltwater and Marsh crocodile enclosure to keep water body cool.*
- ❖ *Covering top shed of Spotted Deer, Hoolock Gibbon, Cassowary and many others enclosure with straw to protect them from excessive heat wave.*

B. Care for animals during monsoon :

- ❖ *Disinfection of enclosures are done more frequent*
- ❖ *Making sheds for animals to protect them from heavy rainfall.*

C. Care for animals during winter :

- ❖ *Provide enough housing to all animals*
- ❖ *Provide straw bedding inside the rest shed of all primates enclosures and aviaries to keep them warm.*
- ❖ *Covering rest shed of all primate enclosure with gunny bags or blanket to protect them from cold.*

- ❖ *Providing proper substance as bedding for reptiles during hibernation*
- ❖ *Heating as and when required.*



22. Research Work carried out and publications:

Not done yet

23. Conservation Breeding Programme of the Zoo:

Conservation breeding program has been planned for Painted Stork (*Mycteria leucocephala*), Lesser Adjutant Stork (*Leptoptilos javanicus*), Black headed ibis (*Threskiornis melanocephalus*) and Yellow Monitor Lizard (*Varanus flavescens*) as selected in the 20th Governing Board Meeting of West Bengal Zoo Authority, held on 06.08.2021 and approved by 21st Technical Committee Meeting of West Bengal Zoo Authority held on 11.04.2022.

24. Animal acquisition / transfer / exchange during the year :

A. Animals arriving in the zoo					
SL. No	Memo No.	Species	No. (M:F:U)	From which Zoo	Date of arrival of zoo
1.	Memo no. 3263/23-2, Barasat, dated 27.11.25 of DFO 24 pargana (North) Division Challan no. WB/113824/1139, dated. 28.11.2025	African Grey Parrot	0:0:1	North-24-Pargana Division	28.11.2025
2.	Memo no. 3827/WL/2W-3(3)/2025, dated. 03.12.2025 of CCF & Conservator of forest Wildlife (HQ), West Bengal	Corn Snake	0:0:1	Wildlife HQ Division	09.12.2025

	<i>Challan no. WB/178034/1781, dated. 08.12.2025</i>				
3	<i>Memo no. 443/26C-13/SWAP, dated 26.02.2026 of DFO 24 pargana (South) Division Challan no. WB/097365/0974, dated. 27.02.2026</i>	<i>Nicobar Pigeon</i>	<i>0:0:1</i>	<i>Sundarban wild Animal Park, Jharkhali</i>	<i>27.02.2026</i>
4	<i>Memo no. 929/WL/2W-16 (Part-V)/2026, dated 13.03.2026 of PCCF, Wildlife & CWLW Challan no. WB/113406/1135, dated 14.03.2026</i>	<i>Star Tortoise</i>	<i>0:0:243</i>	<i>24 Pargana (North) Division</i>	<i>14.03.2026</i>

<i>B. Animals going from the zoo</i>					
<i>SL. No</i>	<i>Memo No.</i>	<i>Species</i>	<i>No. (M:F:U)</i>	<i>Going to which Zoo</i>	<i>Date of arrival of zoo</i>
1.	<i>Memo no. 830/HZ-23/2025-26, dated. 14.03.2026 Challan no. 5610/57, dated. 14.03.2026</i>	<i>Indian star tortoise</i>	<i>0:0:243</i>	<i>Garchumuk Zoological Park</i>	<i>14.03.2026</i>

25. Rescue and Rehabilitation of wild animals carried out by the Zoo :

No rescue and rehabilitation of wild animals were carried out by the zoo throughout the year.

26. Annual Inventory :

FORM-II
[See rule 11 (1)]

PART - A
Harinalaya at Eco Park (Nature Park At Taratola Road), Kolkata, West Bengal

Proforma for Annual Inventory Report
Inventory Report for the Year : 2025-2026

Endangered Species*

- Modified Closing Balance

S.No.	Animal Name	Scientific Name	Opening Stock (01-Apr-2025)				Births			Acquisitions			Disposals			Deaths			Closing Stock (31-Mar-2026)					
			M	F	U	T	M	F	U	M	F	U	M	F	U	M	F	U	M	F	U	T		
Aves																								
1.	Nicobar Pigeon	<i>Caloenas nicobarica</i>	0	0	0	0	0	0	0	0	0	1	0	0	0	0	0	0	0	0	0	1	1	
Total Aves		1	0	0	0	0	0	0	0	0	0	1	0	0	0	0	0	0	0	0	0	1	1	
Mammalia																								
1.	Hoolock Gibbon	<i>Hoolock hoolock</i>	1	3	0	4	0	0	0	0	0	0	0	0	0	0	0	0	0	0	1	3	0	4
2.	# Malabar Giant Squirrel (Indian Giant Squirrel)	<i>Ratufa indica</i>	0	1	1	2	0	0	0	0	0	0	0	0	0	0	0	1	0	1	0	0	1	
3.	Gee's Golden Langur (Golden Langur)	<i>Trachypithecus geei</i>	0	2	1	3	0	0	0	0	0	0	0	0	0	0	0	0	0	0	2	1	3	
Total Mammalia		3	1	6	2	9	0	0	0	0	0	0	0	0	0	0	1	0	2	5	1	8		

S.No.	Animal Name	Scientific Name	Opening Stock (01-Apr-2025)				Births			Acquisitions			Disposals			Deaths			Closing Stock (31-Mar-2026)			
			M	F	U	T	M	F	U	M	F	U	M	F	U	M	F	U	M	F	U	T
8.	Umbrella Cockatoo, White Cockatoo	<i>Cacatua alba</i>	4	2	0	6	0	0	0	0	0	0	0	0	0	0	0	0	4	2	0	6
9.	Greater Sulphur-crested Cockatoo, Sulphur-crested Cockatoo	<i>Cacatua galerita</i>	2	2	0	4	0	0	0	0	0	0	0	0	0	0	0	0	2	2	0	4
10.	Blue-eyed Cockatoo	<i>Cacatua ophthalmica</i>	0	0	0	0	0	0	0	0	1	0	0	0	0	0	0	0	0	0	1	1
11.	Bare-eyed Cockatoo, Little Cockatoo, Little Corella	<i>Cacatua sanguinea</i>	0	0	0	0	0	0	0	0	2	0	0	0	0	0	0	0	0	0	2	2
12.	Lesser Sulphur-crested Cockatoo, Yellow-crested Cockatoo	<i>Cacatua sulphurea</i>	3	1	0	4	0	0	0	0	0	0	0	0	0	0	0	0	3	1	0	4
13.	Red-tailed black cockatoo, Red-tailed Black-Cockatoo	<i>Calyptorhynchus banksii</i>	1	2	0	3	0	0	1	0	0	0	0	0	0	0	0	0	1	2	1	4
14.	Dwarf Cassowary	<i>Casuarius bennetti</i>	1	1	0	2	0	0	0	0	0	0	0	0	0	0	0	0	1	1	0	2
15.	Southern Cassowary	<i>Casuarius casuarius</i>	1	1	0	2	0	0	0	0	0	0	0	0	0	0	0	0	1	1	0	2
16.	Golden Pheasant	<i>Chrysolophus pictus</i>	0	1	0	1	0	0	0	0	3	0	0	0	0	0	0	0	0	1	3	4
17.	Abdim's Stork	<i>Ciconia abdimii</i>	0	0	1	1	0	0	0	0	0	0	0	0	0	0	0	0	1	0	0	1
18.	Pigeon	<i>Columba livia</i>	0	0	0	0	0	0	0	0	6	0	0	0	0	0	0	0	0	0	6	6
19.	Black Swan	<i>Cygnus atratus</i>	0	1	0	1	0	0	0	0	0	0	0	0	0	0	0	0	0	1	0	1
20.	Mute Swan	<i>Cygnus olor</i>	0	0	0	0	0	0	0	0	2	0	0	0	0	0	0	0	0	0	2	2

Page 4 / 7

S.No.	Animal Name	Scientific Name	Opening Stock (01-Apr-2025)				Births			Acquisitions			Disposals			Deaths			Closing Stock (31-Mar-2026)			
			M	F	U	T	M	F	U	M	F	U	M	F	U	M	F	U	T			
21.	Hawk-headed Parrot, Red-fan Parrot(ssp. accipitrinus)	<i>Deropterus accipitrinus accipitrinus</i>	0	0	0	0	0	0	0	0	1	0	0	0	0	0	1	0	0	0	0	
22.	Eclectus Parrot	<i>Eclectus roratus</i>	2	3	0	5	0	0	0	0	0	0	0	0	0	0	0	2	3	0	5	
23.	Harlequin Duck	<i>Histrionicus histrionicus</i>	5	3	0	8	0	0	0	0	0	0	0	0	0	1	0	5	2	0	7	
24.	Black-capped Lory, Western Black-capped Lory	<i>Lorius lory</i>	12	9	0	21	0	0	0	0	0	0	0	0	1	1	0	11	8	0	19	
25.	Budgerigar	<i>Melopsittacus undulatus</i>	0	0	0	0	0	0	0	0	53	0	0	0	0	0	15	0	0	38	38	
26.	Grey-breasted Parakeet, Monk Parakeet, Quaker Parakeet	<i>Myiopsitta monachus</i>	0	0	0	0	0	0	0	0	1	0	0	0	0	0	0	0	0	1	1	
27.	Cockatiel	<i>Nymphicus hollandicus</i>	0	0	0	0	0	0	0	0	2	0	0	0	0	0	0	0	0	2	2	
28.	Orinoco Goose	<i>Oressochen jubatus</i>	0	1	0	1	0	0	0	0	0	0	0	0	0	0	0	0	1	0	1	
29.	Macaw sp.	<i>Psittacidae</i>	0	0	0	0	0	0	0	0	1	0	0	0	0	0	0	0	0	1	1	
30.	Alexandrine Parakeet	<i>Psittacula eupatria</i>	2	3	0	5	0	0	0	0	0	0	0	0	0	0	0	2	3	0	5	
31.	Rose-ringed Parakeet	<i>Psittacula krameri</i>	0	4	0	4	0	0	0	0	12	0	0	0	0	2	0	4	10	14		
32.	Grey Parrot, Jacquot	<i>Psittacus erithacus</i>	6	6	0	12	0	0	0	0	1	0	0	0	0	0	6	6	1	13		
Total Aves			32																			
Mammalia																						
1.	Chital/ Spotted Deer	<i>Axis axis</i>	14	20	5	39	2	3	3	0	0	0	0	0	0	0	0	16	23	8	47	

Page 5 / 7

S.No.	Animal Name	Scientific Name	Opening Stock (01-Apr-2025)				Births			Acquisitions			Disposals			Deaths			Closing Stock (31-Mar-2026)				
			M	F	U	T	M	F	U	M	F	U	M	F	U	M	F	U	M	F	U	T	
2.	Common Marmoset	<i>Callithrix jacchus</i>	1	3	0	4	0	0	0	0	0	0	0	0	0	0	0	1	0	1	2	0	3
3.	Black-capped Capuchin, Tufted Capuchin	<i>Cebus apella</i>	1	1	0	2	0	0	0	0	0	0	0	0	0	0	0	0	0	1	1	0	2
4.	Black-cheeked White-nosed Monkey, Red-tailed guenon, Red-tailed Monkey, Redtail Monkey, Schmidt's Guenon	<i>Cercopithecus ascanius</i>	0	1	0	1	0	0	0	0	0	0	0	0	0	0	0	0	0	0	1	0	1
5.	Grant's Zebra	<i>Equus quagga boehmi</i>	1	0	0	1	0	0	0	0	0	0	0	0	0	0	0	0	0	1	0	0	1
6.	Northern Giraffe	<i>Giraffa camelopardalis</i>	1	1	0	2	0	0	0	0	0	0	0	0	0	0	0	0	0	1	1	0	2
7.	Common hippopotamus, Hippopotamus, Large Hippo	<i>Hippopotamus amphibius</i>	1	0	0	1	0	0	0	0	0	0	0	0	0	0	0	0	0	1	0	0	1
8.	Golden-headed Lion Tamarin	<i>Leontopithecus chrysomelas</i>	1	0	0	1	0	0	0	0	0	0	0	0	0	0	0	0	0	1	0	0	1
9.	Indian Muntjac	<i>Muntiacus muntjak</i>	0	5	0	5	0	0	0	0	0	0	0	0	0	0	0	0	0	5	0	5	
10.	Sunda Slow Loris	<i>Nycticebus coucang</i>	0	0	0	0	0	0	0	0	1	0	0	0	0	0	0	0	0	0	1	1	
11.	Sugar Glider	<i>Petaurus breviceps</i>	4	6	6	16	0	0	0	0	0	0	0	0	0	0	0	0	0	4	6	6	16

S.No.	Animal Name	Scientific Name	Opening Stock (01-Apr-2025)				Births			Acquisitions			Disposals			Deaths			Closing Stock (31-Mar-2026)				
			M	F	U	T	M	F	U	M	F	U	M	F	U	M	F	U	M	F	U	T	
12.	Geoffroy's Tamarin, Red-bellied Tamarin, Red-chested mustached tamarin, Red-chested Tamarin, White-lipped Tamarin	<i>Saguinus labiatus</i>	1	1	0	2	0	0	1	0	0	0	0	0	0	0	0	0	0	1	1	1	3
Total Mammalia	12		25	38	11	74	2	3	4	0	0	1	0	0	0	0	0	1	0	27	40	16	83
Reptilia																							
1.	Green Iguana	<i>Iguana iguana</i>	0	0	0	0	0	0	0	0	0	1	0	0	0	0	0	0	1	0	0	0	0
2.	Corn Snake	<i>Pantherophis guttatus</i>	0	0	0	0	0	0	0	0	0	1	0	0	0	0	0	0	0	0	0	1	1
Total Reptilia	2		0	0	0	0	0	0	0	0	0	2	0	0	0	0	0	1	0	0	1	1	
Total			91	94	16	201	2	3	5	0	0	106	0	0	0	3	4	20	91	93	106	290	
Grand Total			94	105	18	217	2	3	5	0	0	107	0	0	0	3	5	20	94	104	108	306	

Curator (Animals)


Director

27. Mortality of Animals :

<i>Sl No.</i>	<i>Animal Name</i>	<i>Scientific Name</i>	<i>Sex</i>	<i>Date of Death</i>	<i>Cause of Death</i>
1	<i>Amazon Parrot</i>	<i>Amazona amazonica</i>	1:0:0	12.04.2025	<i>Asphyxia due to loss of blood for injury</i>
2	<i>Giant Squirrel</i>	<i>Ratufa indica</i>	0:1:0	01.05.2025	<i>Hypertrophic cardiomyopathy causes cardiac arrest</i>
3	<i>Blue-Gold Macaw</i>	<i>Ara ararauna</i>	0:1:0	12.05.2025	<i>Respiratory failure and cardiac shock due to injury</i>
4	<i>Common Marmoset</i>	<i>Callithrix jacchus</i>	0:1:0	21.05.2025	
5	<i>Cockatiel</i>	<i>Nymphicus hollandicus</i>	1:0:0	30.05.2025	<i>Hepatitis with lesion</i>
6	<i>Baddri</i>	<i>Melopsittacus undulatus</i>	1:0:0	28.06.2025	<i>Respiratory failure</i>
7	<i>Harlequin Duck</i>	<i>Histrionicus histrionicus</i>	0:1:0	29.06.2025	<i>Hepatitis</i>
8	<i>Lory</i>	<i>Lorius lory</i>	1:0:0	03.07.2025	<i>Respiratory failure followed by cardiac arrest</i>

9	<i>Baddri</i>	<i>Melopsittacus undulatus</i>	1:0:0	06.07.2025	<i>Colo-rectal tumour leads to rupture and complete obstruction loss of blood & death</i>
10	<i>Amazon Parrot</i>	<i>Amazona amazonica</i>	1:0:0	13.07.2025	<i>Severe anemia due to infestation of round and tape worm.</i>
11	<i>Baddri</i>	<i>Melopsittacus undulates</i>	1:0:0	19.07.2025	<i>Respiratory failure</i>
12	<i>Baddri</i>	<i>Melopsittacus undulates</i>	0:0:1	23.07.2025	<i>Respiratory failure due to obstruction of esophagus and laryngeal structure with food.</i>
13	<i>Baddri</i>	<i>Melopsittacus undulatus</i>	0:0:1	28.07.2025	<i>Cardio-respiratory failure</i>
14	<i>Baddri</i>	<i>Melopsittacus undulatus</i>	0:1:0	18.08.2025	<i>Respiratory failure</i>
15	<i>Hungarian giant house Pigeon</i>		1:0:0	19.08.2025	<i>Over infestation of tape-worm.</i>
16	<i>Rose Ringed Parakeet</i>	<i>Psittacula krameri</i>	1:0:0	27.08.2025	<i>Respiratory failure due to severe anemia.</i>

17	Baddri	<i>Melopsittacus undulatus</i>	0:1:0	12.09.2025	Cardio-respiratory failure.
18	Baddri	<i>Melopsittacus undulatus</i>	1:0:0	15.10.2025	Hemorrhagic intestine leading to ulcer.
19	Baddri	<i>Melopsittacus undulatus</i>	1:0:0	23.10.2025	Obstructive hepato kidney junction and kidney stone.
20	Baddri	<i>Melopsittacus undulatus</i>	1:0:0	02.11.2025	Asphyxia due to respiratory failure.
21	Baddri	<i>Melopsittacus undulatus</i>	1:0:0	14.11.2025	Severe bleeding and hemorrhages due to infighting.
22	Lory	<i>Lorius lory</i>	0:1:0	15.11.2025	Cardio-respiratory failure due to severe loss of blood on account of injury.
23	Amazon Parrot	<i>Amazona amazonica</i>	0:1:0	26.11.2025	Ulcerative hemorrhages into the intestine and hepatic disorder.
24	Baddri	<i>Melopsittacus undulatus</i>	0:1:0	30.12.2025	Severe hemorrhages due to injury

					and cardiac failure.
25	Baddri	<i>Melopsittacus undulatus</i>	1:0:0	07.01.2026	Hepatic abscess and liver cirrhosis.
26	Hawk-headed parrot	<i>Deropterus accipitrinus</i>	1:0:0	23.01.2026	Obstipation and rectal impaction.
27	Rose-ringed Parakeet	<i>Psittacula krameri</i>	1:0:0	07.02.2026	Cardio-respiratory failure due to severe blood loss due to infighting.
28	Baddri	<i>Melopsittacus undulatus</i>	0:1:0	13.02.2026	Respiratory failure followed by cardiac arrest.
29	Baddri	<i>Melopsittacus undulatus</i>	1:0:0	22.02.2026	Hemorrhagic shock and respiratory failure due to infighting.
30	Baddri	<i>Melopsittacus undulatus</i>	1:0:0	08.03.2026	Respiratory failure due to severe anemia.
31	Green Iguana	<i>Iguana iguana</i>	0:1:0	28.03.2026	Liver cirrhosis with gall-bladder stone.

28. Compliance with conditions stipulated by the Central Zoo Authority :

Compliance Reports on conditions stipulated by CZA during grant of recognition based on the zoo evaluation on September 18th to 20th Renewal of recognition of Harinalaya Mini Zoo, Newtown, Kolkata, West Bengal under Section 38-H(1),(3)&(4) of the Wild Life (Protection) Act, 1972 for period beyond 15th May 2025 to 3rd February 2029

Sr. No	Norm No.	Particulars of conditions	Time Period to Comply
<i>2. Administrative and Staffing Pattern</i>			
1.	2.2	<p><i>The number of animals has increased to 317 (including 15 endangered) animals of 50 species (Inventory Q 1 25-26) from 30 animals of 2 species since last evaluation on 07.09.2022.</i></p> <p><i>Correspondingly more skilled manpower / staff in Animal care e.g. Zoo Keepers and animal attendants are required. The Zoo may be allotted at least 2 Zoo Keepers and 4 animal attendants per section - Aviary, Herbivores, reptiles, Primates, Carnivores.</i></p>	3 months
<i>4. Animal housing, display of animals and animal enclosures</i>			
2.	4.2	<i>Enclosures designs sent to CZA needs to be followed up and approval obtained.</i>	Immediate
3.	4.6	<i>Regular and dynamic enrichment is suggested for maintaining behaviorally healthy population of animal.</i>	3 Months
<i>5. Upkeep and healthcare of animals</i>			
4.	5.2	<p><i>Carnivore food and hygiene : - Before acquisition of carnivore all necessary preparedness must be completed.</i></p> <p><i>Zoo shall endeavor to provide all the animals in its collection timely supply of quality food of such a composition and in such quantities that nutritional and behavioral requirement of each animal are fully met and adequate safeguards shall be taken to ensure that no animal remains under -nourished on account of dominant animals not permitting other animals getting their share of the feed and the zoo operator shall ensure round the clock supply of potable water to all the animals in the zoo.</i></p>	6 months
<i>6. Veterinary and infrastructure facilities</i>			

5.	6.1	Full fledged Hospital facility must be established as per Master Plan.	6 months
<i>9. Acquisition and breeding of animals</i>			
6.	9.4	Zoo shall approach the CZA for possible pairing of unpaired / single animals.	Immediate
7.	9.8	Genetic relatedness of housed animals need to be ascertained. A letter for reporting of lineage to be sent to respective zoos from where animals are acquired.	Immediate
<i>11. Education and outreach activities</i>			
8.	11.1	Awareness should be done frequently and on large scale with adequate budgetary allocation. Relevant manpower e.g Zoo Educator may be considered for the purpose.	6 Months
<i>Other observations</i>			
9.		A full time dietician cum food store In-charge may be appointed for food preparation and management of food store as per CZA standards.	3 Months
10.		Fund raising by CSR is advised for better infrastructural development e.g Zoo Interpretation Centre, Zoo Hospital / Kraal etc. as per approved Master Plan. Zoo may communicate to Corporate houses for funding of zoo for improvement of facilities.	3 Months
11.		CZA, may consider upgrading the zoo to the category of 'Small Zoo' as the zoo satisfies the criteria and situated in the city of Kolkata.	3 Months
12.		<p><i>Observation on Master (layout) Plan:</i></p> <p>Since newly allotted land is low, prone to waterlogging, this land may be used for service facilities only and Display enclosures may be consolidated to existing display visitor area with secure boundary wall and developed land.</p> <p>New Rescue / Quarantine center construction as per CZA observation followed by Shifting of position of Deer Enclosure, Reptile enclosure.</p> <p>Unsuitable and difficult to manage species e.g Orangutan, Koala, Red tailed Monkey be removed from Animal Collection Plan.</p> <p>Housing of behaviorally imprinted individuals may be sought e.g Golden Langur, Hoolock Gibbon.</p>	Immediate
13.		Technical expertise and DPR may be obtained for required engineering works from competent agency.	3 months
14.		The trees in the premises should be labelled with their scientific name (Bilingual).	Immediate

29. Adoption :

Name	Animal	Amount	Type of adoption	Duration
Coal India Ltd. (CIL), Coal Bhawan, Environment Division	Hoolock Gibbon	2,80,000.00	Annual	29.07.2025- 28.07.2026
	Common Marmoset	60,000.00		
	Tufted Capuchin	40,000.00		
	Golden headed lion tamarin	20,000.00		
	White lipped tamarin	40,000.00		
	Red-tailed Monkey	20,000.00		
	Spotted Deer	7,80,000.00		
	Barking Deer	1,00,000.00		
	Grant's Zebra	50,000.00		
	Northern Giraffe	3,00,000.00		
	Common Hippopotamus	1,50,000.00		
	Marsh Crocodile	60,000.00		
	Salt water Crocodile	80,000.00		
	Red & Green Macaw	80,000.00		
	Scarlet Macaw	1,20,000.00		
	Umbrella Cockatoo	90,000.00		
	Greater Sulphur crested Cockatoo	60,000.00		
	Lesser Sulphur crested Cockatoo	60,000.00		
	Red tailed Black Cockatoo	45,000.00		
	Golden Pheasant	15,000.00		
	Abdim's Stork	20,000.00		
	Black Swan	20,000.00		
	Eclectus Parrot	75,000.00		
	Lory	3,00,000.00		
	Grey Parrot	1,80,000.00		
	Chinese Goose	60,000.00		
	Amazon Parrot	2,25,000.00		
	Magpie Goose	15,000.00		
Blue & Yellow Macaw	2,80,000.00			

30. List of free living wild animals within the zoo premises :

Mammals :

- | | | |
|-------------------------------|---|-----------------------------------|
| 1. Small Indian Civet | : | <i>Viverriculaindica</i> |
| 2. Asian Palm Civet | : | <i>Paradoxurus hermaphroditus</i> |
| 3. Common Mongoose | : | <i>Urvaedwardsii</i> |
| 4. Five-striped Palm Squirrel | : | <i>Funambuluspen</i> |

Reptiles:

- | | | |
|-----------------------|---|--------------------------|
| 1. Spectacled Cobra | : | <i>Najanaja</i> |
| 2. Monocled Cobra | : | <i>Najakaouthia</i> |
| 3. Banded Krait | : | <i>Bungarusfasciatus</i> |
| 4. Russell's Viper | : | <i>Daboiarusselii</i> |
| 5. Checkered Keelback | : | <i>Fowleapiscator</i> |

Birds :

- | | | |
|------------------------------|---|------------------------------|
| 1. Black-crowned Night Heron | : | <i>Nycticoraxnycticorax</i> |
| 2. Indian Pond Heron | : | <i>Ardeolagrayii</i> |
| 3. Cattle Egret | : | <i>Bubulcus ibis</i> |
| 4. Little Egret | : | <i>Egretta garzetta</i> |
| 5. Little Cormorant | : | <i>Microcarboniger</i> |
| 6. Black Kite | : | <i>Milvusmigrans</i> |
| 7. Shikra | : | <i>Accipiter badius</i> |
| 8. White-breasted Water hen | : | <i>Amaurornisphoenicurus</i> |
| 9. Common Pigeon | : | <i>Columba livia</i> |
| 10. Eurasian Collared Dove | : | <i>Streptopeliadecaocto</i> |
| 11. Spotted Dove | : | <i>Spilopeliachinensis</i> |

12. Rose-ringed Parakeet	:	<i>Psittaculakrameri</i>
13. Alexandrine Parakeet	:	<i>Psittaculaeupatria</i>
14. Common Hawk Cuckoo	:	<i>Hierococyxvarius</i>
15. Asian Koel	:	<i>Eudynamysscolopaceus</i>
16. Greater Coucal	:	<i>Centropussinensis</i>
17. Asian Palm Swift	:	<i>Cypsiurusbalasiensis</i>
18. Common Hoopoe	:	<i>Upupaepops</i>
19. White-throated Kingfisher	:	<i>Halcyon smyrnensis</i>
20. Common Kingfisher	:	<i>Alcedoatthis</i>
21. Green Bee-eater	:	<i>Meropsorientalis</i>
22. Lineated Barbet	:	<i>Psilopogonlineatus</i>
23. Blue-throated Barbet	:	<i>Psilopogonasiaticus</i>
24. Coppersmith Barbet	:	<i>Psilopogonhaemacephalus</i>
25. Lesser Goldenback	:	<i>Dinopiumbenghalense</i>
26. Common Iora	:	<i>Aegithinatiphia</i>
27. Brown Shrike	:	<i>Laniuscristatus</i>
28. Black Drongo	:	<i>Dicrurusmacrocerus</i>
29. Black-hooded Oriole	:	<i>Oriolusxanthornus</i>
30. Black-naped Oriole	:	<i>Orioluschinensis</i>
31. Rufous Treepie	:	<i>Dendrocittavagabunda</i>
32. House Crow	:	<i>Corvussplendens</i>
33. Red-whiskered Bulbul	:	<i>Pycnonotusjocosus</i>
34. Red-vented Bulbul	:	<i>Pycnonotuscafer</i>
35. Common Tailorbird	:	<i>Orthotomussutorius</i>
36. Jungle Babbler	:	<i>Argyastriata</i>
37. Jungle Myna	:	<i>Acridotheresfuscus</i>
38. Common Myna	:	<i>Acridotherestrictis</i>
39. Asian Pied Starling	:	<i>Gracupica contra</i>

- | | | |
|------------------------------|---|---------------------------|
| 40. Chestnut-tailed Starling | : | <i>Sturniamalabarica</i> |
| 41. Oriental Magpie Robin | : | <i>Copsychussaularis</i> |
| 42. Purple-rumped Sunbird | : | <i>Leptocomazeylonica</i> |
| 43. Purple Sunbird | : | <i>Cinnyrisasiaticus</i> |
| 44. House Sparrow | : | <i>Passer domesticus</i> |
| 45. White Wagtail | : | <i>Motacilla alba</i> |

Butterflies:

Family: Papilionidae

- | | | |
|-------------------|---|--------------------------------|
| 1. Common Jay | : | <i>Graphiumdoson</i> |
| 2. Tailed Jay | : | <i>Graphiumagamemnon</i> |
| 3. Lime Butterfly | : | <i>Papiliodemoleus</i> |
| 4. Common Mormon | : | <i>Papiliopolytes</i> |
| 5. Common Rose | : | <i>Pachlioptaaristolochiae</i> |

Family: Pieridae

- | | | |
|-------------------------|---|---------------------------|
| 1. Mottled Emigrant | : | <i>Catopsiliapyranthe</i> |
| 2. Common Emigrant | : | <i>Catopsiliapomona</i> |
| 3. Common Jezebel | : | <i>Delias eucharis</i> |
| 4. Psyche | : | <i>Leptosianina</i> |
| 5. Indian Cabbage White | : | <i>Pieriscanidia</i> |
| 6. Common Wanderer | : | <i>Pareroniavaleria</i> |
| 7. Common Grass Yellow | : | <i>Euremahecabe</i> |

Family: Lycaenidae

- | | | |
|--------------------|---|--------------------|
| 1. Striped Pierrot | : | <i>Tarucusnara</i> |
| 2. Tiny Grass Blue | : | <i>Zizulahylax</i> |
| 3. Striped Pierrot | : | <i>Tarucusnara</i> |

4. *Tiny Grass Blue* : *Zizulahlax*

Family: Nymphalidae

1. *Common Bushbrown* : *Mycalesis perseus*
2. *Common Five-ring* : *Ypthimabaldus*
3. *Common Four-ring* : *Ypthimahuebneri*
4. *Tawny Coster* : *Acraea violae*
5. *Danaid Eggfly* : *Hypolimnasmisippus*
6. *Blue Tiger* : *Tirumalalimniace*
7. *Striped Tiger* : *Danaus genutia*
8. *Plain Tiger* : *Danaus chrysippus*
9. *Common Indian Crow* : *Euploea core*
10. *Common Evening Brown* : *Melanitis leda*