

PILIKULA BIOLOGICAL PARK

Mangaluru, Karnataka.

Annual Report 2017-18



King Cobras in Pilikula Biological Park



Contents

Sl.No.	Particulars	Page No.
1.	Director's report	3
2	History of the zoo	4
3	Vision	5
4	Mission	5
5	Objective	6
6	About us	7
7	Organization Chart	8
8	Human Resources	9
9	Capacity Building of the zoo personnel	9
10	Zoo Advisory Committee	10
11	Statement of income and expenditure of the zoo	11
12	Daily feed schedule of animals	11
13	Vaccination schedule of animals	17
14	De-worming schedule of animals	18
15	Disinfection schedule	19
16	Development works	20
17	Educational and awareness programmes	21
18	Important events	23
19	Seasonal special arrangements for upkeep of animals	24
20	Animal acquisition/transfer/exchange	26
21	Annual inventory of animals	27
22	Mortality of animals	32
23	List of free living wild animals within the zoo premises	32

DIRECTOR'S REPORT

Pilikula Biological Park, a large zoo managed by Dr. Shivaram Karanth Pilikula Nisarga Dhama Society(R), is situated in the outskirts of Mangaluru city. It is one of the major components of larger project of Pilikula Nisarga Dhama which itself is a prime tourist destination of the coastal Karnataka. The zoo was inaugurated during the year 2001 and opened to the public in the year 2004. It is having an area of 82 hectares of land with more than 120 species of animals with over 1000 individuals in total.

Vision is to develop a zoo of international standards in the Western Ghats region and to promote the conservation of fauna and flora of Western Ghats through education, scientific research, captive breeding and establishment of rescue centre as per the approved master plan. Since its inception, Pilikula has been in a strive towards converting entire area to resemble Western Ghats itself which is one among the 34 global biodiversity hotspots. Based upon this vision, the green belt project was initiated. As a part of the project, the vegetation cover of the zoo area comprising predominantly of exotic Acacia plants are being replaced with endemic species of Western Ghats region in phased manner. The first phase of the project has been completed successfully. The second phase is also in progress covering nearly 60acers.

Pilikula Biological Park can be regarded as a model zoo that can be followed, in providing an animal friendly atmosphere. The zoo uses its vast land area to fulfil the species specific requirements of each animal by providing ample space for them to express their normal behaviour. Thus the simulation of their natural habitat has led not only to a mere physical wellbeing, but also a state of psychological wellbeing as well, implied by their successful reproduction and absence of stereotypic behaviours. The zoo also has a conservation breeding centre of king cobra. We successfully bred King cobra in captivity and released more than 100 neonates in their habitat.

Pilikula Biological Park is a showcase of mini western ghats. Efforts are being made to construct the enclosures resembling their natural habitat and for creating awareness among people in the ex-situ conservation of Western Ghats fauna and flora.



H J Bhandary
Director
Pilikula Biological Park
Mangalore

History of the zoo:

Pilikula the name derived from the local tulu language ‘Pili’ means Tiger and ‘Kula’ means pond. It is said that in the past years Tigers were extensively found in this locality. The Tigers used to drink water from a huge pond found in the area hence the name “Pilikula”. The natural tiger caves still exist in the locality.

Pilikula Biological Park is a major component of Pilikula Nisarga Dhama. Kadri deer park and mini zoo was closed as per the order of Central Zoo Authority and animals from defunct zoo were shifted to Pilikula. Pilikula Biological Park was planned with the valuable guidance of Sri Puspha Kumar IFS (Retd.) the then PCCF of Andra Pradesh.

Pilikula Biological Park was inaugurated on 12.01.2001 by the Hon’ble Chief Minister of Karnataka. The park has since been recognized by the Central Zoo Authority vide letter No. 23-3/97-CZA(5) dated 12.8.1999 and the layout plan approved by the Central Zoo Authority vide letter No.F.No.23-1/97-CZA(N) dated 4.6.2002. Zoo is run by the Pilikula Nisarga Dhama Society®. Maintenance of the zoo including development of infrastructure, feeding, health care of the animals are done by the Society with the help of donation from institutions, corporate sectors and individuals. There is very little contribution from the Government sector. Pilikula Nisarga Dhama Society was established in April 1997. The Society comprises elected representatives and heads of important public institutions and is presided by the district in-charge minister. The Governing Council comprises of key Officers of various Government departments and is headed by the Deputy Commissioner of Dakshina Kannada District.



Entrance of Pilikula Biological Park.

Pilikula Nisarga Dhama Society ®:

Pilikula Nisarga Dhama (Pilikula) is a major eco-education and tourism development project promoted by the District Administration of Dakshina Kannada in the beautiful city of Mangalore in Karnataka State, India.

Pilikula is an integrated theme park with a wide variety of features; Pilikula has many attractions of cultural and scientific interest. Pilikula extends over an area of 375 acres along the banks of Gurupura River.

Pilikula presently includes a Biological Park, Botanical and Medicinal Gardens, Regional Science Centre, Lake Garden and Boating, Heritage and Artisan Village, Jungle Lodges, Golf Course, Amusement and Water Park.

Pilikula probably the first project of its kind in India, it is inspired by the concept of providing a wholesome experience of the native natural and cultural heritage of the region along with all modern recreational facilities.

It is also an attempt to showcase the rich native heritage and coastal culture of the people of Dakshina Kannada district. In short, Pilikula is one-stop education and recreation destination in India - a must visit place for all visitors to this part of the world.

Pilikula is a registered society, registered on 23.04.1997 under the Karnataka Societies Registration Act 1960 (Sl. No. 17 of Karnataka Act 1960). It consists of a General body with the Dakshina Kannada District in-charge Minister as ex-officio President.



Garden and resting place

Vision:

To develop a zoo of international standards in the Western Ghats region mainly for in-situ and ex-situ conservation of Western Ghats species.

Mission:

To promote the conservation of fauna and flora of Western Ghats region through education, scientific research, captive breeding and establishment of rescue centre.

Strategy of the Zoo:

The novel concept of the Pilikula Biological Park is to run a zoo by a registered society with generous financial help from philanthropist, corporate bodies, institutions, general public, grants from government and income generated by the entry fee and rent from other facilities.



School children visiting Pilikula Biological Park during children carnival.

Objective:

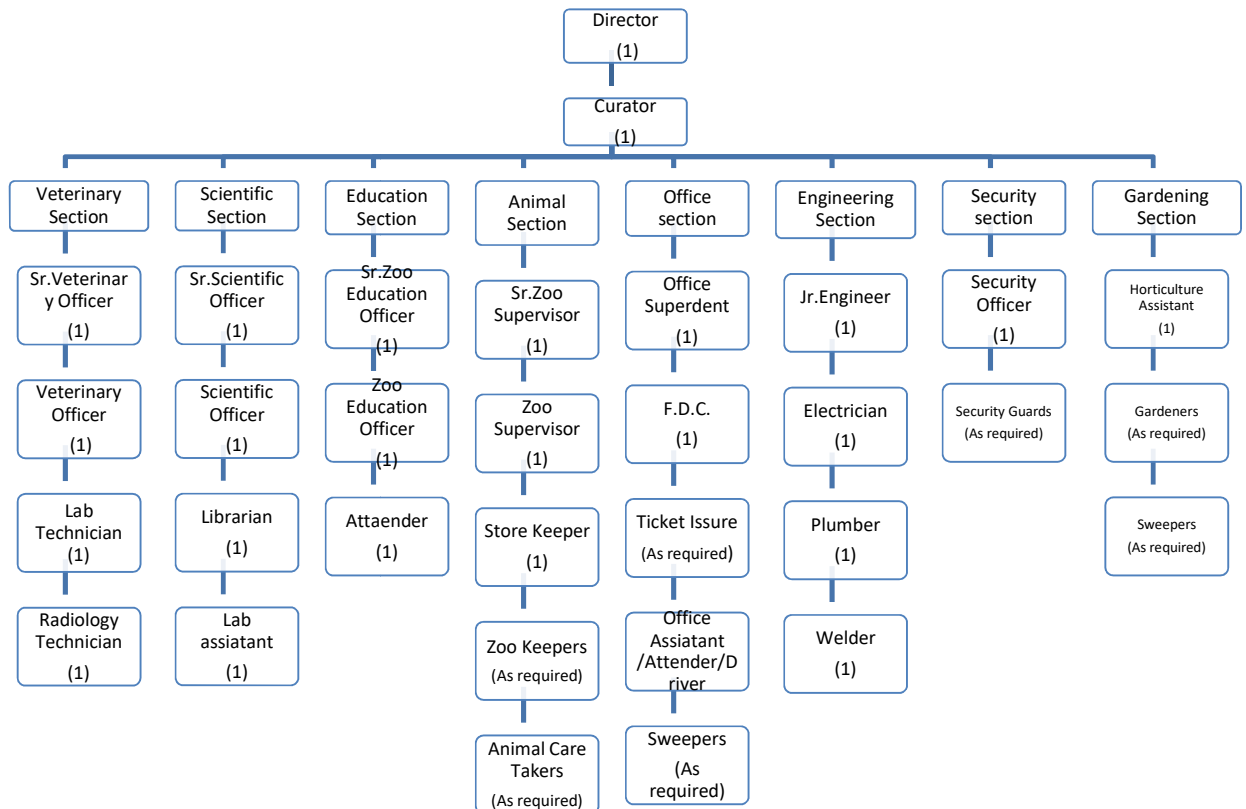
- Showcase the rich fauna and flora of the Western Ghats.
- Conservation and breeding of endangered species found in Western Ghats region for display, exchange, breeding loans and rehabilitation to the wild in keeping with the National Policy and guidelines from time to time.
- Promote awareness among the public in general and students in particular on the need to protect and conserve wildlife and its habitat.
- Encourage research and scientific studies useful for zoo and wildlife management.
- To function as a rescue centre for wild animals posing danger to the humans, wild animals entering into human habitation, orphaned and injured animals in this region.
- Recreation for the purpose of providing wholesome, healthy educational activity by utilizing the natural features.

About us:

S.No.	Particulars	Information
Basic information about the zoo		
1	Name of the Zoo	Pilikula Biological Park
2	Year of establishment	2001
3	Address of the zoo	Director Pilikula Biological Park Vamanjoor
4	State	Karnataka
5	Telephone number	+91 824 2263300
6	Fax number	+91 824 2263300
7	E-mail address	pilikulazoo@gmail.com
8	Website	www.pilikulazoo.com
9	Distance from nearest	Airport: 15km
		Railway station: 12km
		Bus stand: 12km
10	Recognition valid upto	23.01.2020
11	Category of zoo	Large
12	Area (in hectares)	82
13	Number of visitors 2017-18	Adult: 4,21,094
		Children (school and college): 4,37,756
		Free Entry (NGO,Clubs,Sanga etc): 72,471
		Total Indians: 9,31,321
		Total Foreigners: 827
		Total Visitors: 9,32,148
14	Visitors' facilities available in zoo:	Purified Drinking Water
		First Aid
		E-buggy
		Wheel Chair
		Interlock paved roads
		Hi-Tech Toilets
		Relaxing Places
		Gardens
Cafeterias		

		Children Park
15	Weekly closure day of the zoo	Monday
Management personnel of the zoo		
16	Name and designation of the Office in-charge	H J Bhandary Director
17	Senior Scientific Officer	Jerald Vikram Lobo
18	Veterinary Officer	Dr. Vishnu Deth Vijayakumar
19	Education Officer	Suchitra N Rao
Operator of the zoo		
20	Operator	Dr.Shivaram Karanth Pilikula Nisarga Dhama Society (R)
21	Address of the operator	Dr.Shivaram Karanth Pilikula Nisarga Dhama Vamanjoor, Mangaluru (D.K.) Karnataka – 575028
22	Phone number	+91 824 2263565
23	E-mail address	pilikula96@gmail.com

Organization Chart



Human Resources:**Man power of the zoo:**

Sl.No.	Designation	Sanctioned Posts (Nos.)	Names of the incumbent
1	Director	1	H J Bhandary
2	Senior Scientific Officer	1	Jerald Vikram Lobo
3	Veterinary Officer	1	Dr. Vishnu Deth Vijayakumar
4	Zoo Education Officer	1	Suchitra N Rao
5	Assistant Engineer	1	Rakesh D.P.
6	Supervisor	1	Lingappayya
7	Horticulture Assistant	1	Manoj A
8	Office Assistant	As required	Ranjan
9	Animal Care Takers	As required	Udaya Kumar Devendra Dinesh Kumar Kishore Kumar Jayananada Vikesh Ummer Farooq Narayana Gopalakrishna Santosh Meenakshi Ashoka Sundara

Note: Other required staff are pooled from Pilikula Nisargadhama.

Capacity building of zoo personnel:

Sl.No.	Name and Designation	Subject	Period	Training institution
1	H J Bhandary Director	Vision 2030 of the zoos in India	18 th – 21 st December 2017	Sri Chamarajendra Zoological Garden, Mysuru, Karnataka.

2	Dr. Vishnu Deth Vijayakumar Veterinary Officer	Capacity building of Indian zoo veterinarians on animal health management in captivity	16 th – 19 th September 2017	Nehru Zoological Park, New Delhi.
3	Jerald Vikram Lobo	Middle level officials training	11 th – 14 th December 2017	Sanjay Gandhi Biological Park, Patna, Bihar
4	Jerald Vikram Lobo	Interactive session on Zoological Information Management System (ZIMS) and data entry in the software	5 th – 6 th March 2018	Arignar Anna Zoological Park, Vandalur, Chennai

Advisory Committee:

Date of constitution: 03.04.2012

Chairperson Deputy Conservator of Forests (Territorial)
Mangalore Division, Mangaluru

Members Executive Director
Dr. Shivarama Karantha Pilikula Nisaga Dhama
Mangaluru

Sri T Subbaya Shetty
Shuttara consultants, Mangaluru

Sri N G Mohan
Beta Agencies, Mangaluru

Sri William D'Souza
Globe International Travels, Mangaluru

Representative
Animal Care Trust, Mangaluru

Member Secretary Director
Pilikula biological Park, Mangaluru

Statement of income and expenditure of the zoo:

Revenue		Expenditure	
Particulars	Amount (in lakhs)	Particulars	Amount (in lakhs)
Gate collection	162.77	Salary of staff	46.00
Rent/lease on shops	9.50	Travelling allowance	0.23
Donations	14.30	Office contingency	0.35
Total	186.57	Electricity charges	2.94
		Telephone charges	0.17
		Security staffs	16.83
		Consumable materials	1.35
		Food and fodder	95.36
		Health care of animals-veterinary	1.39
		Motor vehicle hire charges	3.10
		Maintenance and special repair	8.32
		Maintenance of greenery	1.31
		Animal transportation	1.17
		Developmental works	29.13
		Total	207.65

Daily feed schedule of animals:

S.No.	Common Name	Feed Item	Quantity	Remarks
Birds				
1	Eagle White Bellied Sea (<i>Haliaeetus leucogaster</i>)	Minced meat	400g	Daily
2	Fowl Grey Jungle (<i>Gallus sonneratii</i>)	Wheat Poultry feed Mixed grains Sprouted grams	50g 50g 25g 50g	Daily
3	Peafowl (<i>Pavo cristatus</i>)	Wheat Poultry feed Mixed grains Sprouted grams	250g 250g 250g 50g	Daily
4	Spoonbill White (<i>Platalea leucorodia</i>)	Fish	400g	Daily
5	Vulture White Scavenger (<i>Neophron percnopterus</i>)	Minced meat	150g	Daily

6	Budgerigar (<i>Melopsittacus undulates</i>)	Mixed grains Mixed vegetables	200g 100g	Daily
7	Cocktail (<i>Nymphicus hollandicus</i>)	Mixed grains	25g	Daily
8	Conure Sun (<i>Aratinga solstitialis</i>)	Mixed grains	25g	Daily
9	Dove Diamond (<i>Geopelia cuneata</i>)	Mixed grains	10g	Daily
10	Duck Caroline/Wood (<i>Aix sponsa</i>)	Wheat Poultry feed Sprouted grams	50g 25g 25g	Daily
11	Duck Mallard (<i>Anas platyrhynchos</i>)	Wheat Sprouted grams	100g 50g	Daily
12	Duck Mandarin (<i>Aix galericulata</i>)	Wheat Poultry feed Sprouted grams	50g 25g 25g	Daily
13	Duck Muscovy (<i>Cairina moschata</i>)	Wheat Poultry feed Sprouted grams	25g 25g 50g	Daily
14	Emu (<i>Dromaius novaehollandiae</i>)	Poultry feed Mixed vegetables Sprouted grams	1kg 250g 100g	Daily
15	Finch Zebra (<i>Taeniopygia guttata</i>)	Mixed grains	10g	Daily
16	Fowl Red Jungle (<i>Gallus gallus</i>)	Wheat Poultry feed Mixed grains Sprouted grams	50g 50g 25g 25g	Daily
17	Fowl Red Spur (<i>Galloperdix spadicea</i>)	Wheat Poultry feed Mixed vegetables Sprouted grams	100g 100g 100g 50g	Daily
18	Hen White Breasted Water (<i>Amaurornis phoenicurus</i>)	Wheat Poultry feed Mixed grains	10g 10g 10g	Daily
19	Purple Heron (<i>Ardea purpurea</i>)	Fish	100g	Daily
20	Ibis White (<i>Threskiornis melanocephala</i>)	Fish	300g	Daily
21	Lovebird Peach Faced (<i>Agapornis roseicollis</i>)	Mixed grains	10g	Daily
22	Kite Brahminy (<i>Haliastur Indus</i>)	Minced meat	100g	Daily
23	Kite Pariah/Black (<i>Milvus migrans</i>)	Minced meat	100g	Daily
24	Koel (<i>Eudynamys scolopaceus</i>)	Poultry feed Fruits	20g 100g	Daily
25	Macaw Blue and Gold	Sunflower seeds Fruits	250g 100g	Daily

		Sprouted grams	100g	
26	Ostrich (<i>Struthio camelus</i>)	Wheat Poultry feed Mixed vegetables Sprouted grams	5kg 7kg 200g 5kg	Daily
27	Owl Barn (<i>Tyto alba</i>)	Minced meat	75g	Daily
28	Owl Bay (<i>Phodilus badius</i>)	Minced meat	75g	Daily
29	Owl Brown Fish (<i>Bubo zeylonensis</i>)	Minced meat	75g	Daily
30	Owl Grey Horned (<i>Bubo bengalensis</i>)	Minced meat	75g	Daily
31	Owl Scoups (<i>Otus scops</i>)	Minced meat	25g	Daily
32	Parakeet Alexandrine (<i>Psittacula eupatria</i>)	Mixed grains Mixed vegetables Sprouted grams	25g 5g 40g	Daily
33	Parakeet Blossom Headed (<i>Psittacula cyanocephala</i>)	Mixed grains Mixed vegetables Sprouted grams	25g 2g 20g	Daily
34	Parakeet Rose Ringed (<i>Psittacula krameri</i>)	Wheat Mixed grains Mixed vegetables Sprouted grams	250g 25g 50g 25g	Daily
35	Pheasant Lady Amherst (<i>Chrysolophus amherstiae</i>)	Wheat Poultry feed Sprouted grams	50g 50g 25g	Daily
36	Pheasant Red Golden (<i>Chrysolophus pictus</i>)	Wheat Poultry feed Sprouted grams	50g 50g 25g	Daily
37	Pheasant Ring Necked (<i>Phasianus nycthemera</i>)	Wheat Poultry feed Sprouted grams	50g 50g 25g	Daily
38	Pheasant Silver (<i>Lophura nycthemera</i>)	Wheat Poultry feed Sprouted grams	50g 50g 25g	Daily
39	Pheasant Yellow Golden (<i>Chrysolophus pictus</i>)	Wheat Poultry feed Sprouted grams	50g 50g 25g	Daily
40	Pigeon Blue Rock (<i>Columba livia</i>)	Mixed grains	50g	Daily
41	Sparrow Java (<i>Padda oryzivora</i>)	Mixed grains	10g	Daily
42	Stork Painted (<i>Mycteria leucocephala</i>)	Fish	500g	Daily
43	Teal Ringed (<i>Callonetta leucophrys</i>)	Wheat Poultry feed Sprouted grams	50g 50g 50g	Daily

44	Teal Lesser Whistling (<i>Dendrocygna javanica</i>)	Wheat Poultry feed Sprouted grams	50g 50g 50g	Daily
Mammals				
1	Bear Sloth (<i>Meluesus ursinus</i>)	Rice Milk Coconut Jaggery Fruits Egg Honey	500g 1ltr 1no 250g 2kg 1no 200ml	Daily
2	Black Buck (<i>Antilope cervicapra</i>)	Green leaves Wheat bran Horse gram Salt Mixed vegetables	3kg 300g 250g 2g 200g	Daily
3	Cat Jungle (<i>Felis chaus</i>)	Chicken	200g	Six days a week
4	Cat Leopard (<i>Felis bengalensis</i>)	Chicken	200g	Six days a week
5	Civet Common Palm (<i>Paradoxurus hermaphrodites</i>)	Meat with 30%bone	150g	Six days a week
6	Civet Indian Small (<i>Viverricula indica</i>)	Chicken	150g	Six days a week
7	Deer Mouse (<i>Moschiola indica</i>)	Green leaves Mixed vegetables Green gram Fruits	100g 100g 50g 100g	Daily
8	Jackal (<i>Canis aureus</i>)	Meat with 30%bone	250g	Six days a week
9	Langur Common (<i>Presbytis entellus</i>)	Vegetable Seasonal fruits Ground nuts	200g 100g 50g	Daily
10	Leopard/ Panther (<i>Panthera pardus</i>)	Meat with 30%bone Meat boneless Chicken	1kg 750g 1.250kg	Six days a week
11	Lion Asiatic (<i>Panthera leo parsica</i>)	Meat with 30%bone Meat boneless Chicken	6kg 2kg 1kg	Six days a week
12	Loris Slender (<i>Loris lydekkerianus</i>)	Insects Fruits	2no. 20g	Daily
13	Macaque Bonnet (<i>Macaca radiate</i>)	Vegetable Seasonal fruits Ground nuts	200g 100g 50g	Daily
14	Macaque Lion Tailed (<i>Macaca silensus</i>)	Vegetable Seasonal fruits Ground nuts	200g 200g 50g	Daily

15	Macaque Rhesus (<i>Macaca mulatta</i>)	Vegetable Seasonal fruits Ground nuts	200g 100g 50g	Daily
16	Mongoose Indian Grey (<i>Herpestes edwardsi</i>)	Meat with 30%bone Chicken	250g 75g	Six days a week
17	Squirrel Flying (<i>Petinomys fuscocapillus</i>)	Ground nut Seasonal fruits Mixed vegetables	5g 50g 50g	Daily
18	Squirrel Giant (<i>Ratufa indica</i>)	Ground nut Seasonal fruits Mixed vegetables	25g 100g 100g	Daily
19	Tiger Bengal (<i>Panthera tigris tigris</i>)	Meat with 30%bone Meat boneless Chicken	5kg 3kg 1.250kg	Six days a week
20	Deer Barking (<i>Muntiacus muntjak</i>)	Green leaves Wheat bran Horse gram Salt Mixed vegetables	2kg 250g 250g 2g 100g	Daily
21	Deer Sambar (<i>Cervus unicolor</i>)	Green leaves Wheat bran Horse gram Salt Mixed vegetables	4kg 500g 300g 3g 200g	Daily
22	Deer Spotted (<i>Axis axis</i>)	Green leaves Wheat bran Horse gram Salt Mixed vegetables	3kg 300g 250g 2g 200g	Daily
23	Hare Black Naped (<i>Lepus nigricollis</i>)	Green leaves Mixed vegetables	100g 100g	Daily
24	Hippopotamus (<i>Hippopotamus amphibious</i>)	Green leaves Wheat bran Horse gram Salt Mixed vegetables Green gram Bengal gram	100kg 2.5kg 2.5kg 50g 2kg 1kg 1kg	Daily
25	Lion Hybrid (<i>Panthera leo</i>)	Meat with 30%bone Meat boneless Chicken	6kg 2kg 1kg	Six days a week
26	Mongoose Ruddy (<i>Herpestes smithii</i>)	Meat with 30%bone Chicken	250g 75g	Six days a week
27	Pig Wild (<i>Sus scrofa</i>)	Mixed vegetables Tubers Horse gram	2kg 500g 100g	Daily

		Wheat bran	100g	
28	Porcupine Indian	Mixed vegetables Tubers Fruits	500g 500g 200g	Daily
Reptiles				
1	Cobra Indian (<i>Naja naja</i>)	Rat	1no.	Twice a week
2	Cobra King (<i>Ophiophagus hanna</i>)	Snake	1 no.	Twice a week
3	Crocodile Gharial (<i>Gavialis gangeticus</i>)	Fish	1kg	Thrice a week
4	Crocodile Marsh (<i>Crocodylus palustris</i>)	Meat	1kg	Twice a week
5	Monitor Lizard (<i>Varanus bengalensis</i>)	Chicken	50g	Six days a week
6	Python Indian Rock (<i>Python molurus molurus</i>)	Rat/Chicken	2no.	Twice a week
7	Python Reticulated (<i>Python reticulates</i>)	Rat/Chicken	2 no.	Twice a week
8	Keelback Checkered (<i>Henochropis piscator</i>)	Fish	2no	Twice a week
9	Snake Rat (<i>Ptyas mucosus</i>)	Mice/Rat	1no.	Twice a week
10	Turtle Giant Soft Shell (<i>Pelochelys cantorii</i>)	Minced meat Fish	50g 150g	Daily
11	Turtle Indian Black (<i>Melanochelys trisuga</i>)	Minced meat Fish	25g 25g	Daily
12	Viper Russells (<i>Vipera ruselli</i>)	Rat/Mice	1no.	Twice a week
13	Boa Common Sand (<i>Gongylophis conicus</i>)	Mice	1no.	Twice a week
14	Boa Red Sand (<i>Eryx johnii</i>)	Mice	1no.	Twice a week
15	Boa Whitaker's (<i>Eryx whitakeri</i>)	Mice	1no.	Twice a week
16	Caiman Spectacled (<i>Caiman crocodiles</i>)	Meat	750g	Thrice a week
17	Crocodile African Dwarf (<i>Orsterlaemess tetraspis</i>)	Meat	750g	Thrice a week
18	Crocodile Nile (<i>Crocodylus niloticus</i>)	Meat	1kg	Thrice a week
19	Crocodile Siamensis (<i>Crocodylus siamensis</i>)	Meat	1kg	Thrice a week
20	Krait Common Indian (<i>Bungarus caeruleus</i>)	Mice	1 no.	Twice a week
21	Racer Banded (<i>Argyrogena fasciolata</i>)	Mice	1 no.	Twice a week
22	Snake Bronzeback Tree (<i>Deudrelaphis tristis</i>)	Lizard	1 no.	Twice a week

23	Snake Ceylon Cat (<i>Boiga ceylonensis</i>)	Lizard/mice	1 no.	Twice a week
24	Snake Common Wolf (<i>Lycodon aulicus</i>)	Lizard/mice	1 no.	Twice a week
25	Snake Green Vine (<i>Ahaetualla nasuttus</i>)	Mice	1 no.	Twice a week
26	Keelback Striped (<i>Amphiesma siolata</i>)	Lizard	1 no.	Twice a week
27	Snake Montane Trinket (<i>Coelognathus helena monticollaris</i>)	Mice	1 no.	Twice a week
28	Terrapin Red Eared (<i>Trachemys scripta</i>)	Minced meat Fish	25g 25g	Daily
29	Turtle Mud or Flap-Shell (<i>Lissemys punctata</i>)	Minced meat Fish	25g 25g	Daily
30	Tortoise Indian Star (<i>Geochelone elegans</i>)	Mixed vegetables Grass	20g 10g	Daily
31	Viper Hump Nosed Pit (<i>Hypnale hypnale</i>)	Mice	1 no.	Twice a week
32	Viper Malabar Pit (<i>Trimeresums malbaricus</i>)	Mice	1 no.	Twice a week

Vaccination Schedule of animals

Sl.No.	Species	Disease vaccinated for	Name of the Vaccine and dosage/ quantity used	Periodicity	Remarks
1	Felids	Feline Panleukopenia, Feline Rhinotracheitis, Feline Calcivirus infection & Rabies	Feline panleukopenia + feline rhinotracheitis + feline calci virus trivalent (killed vaccine)+Rabies cell culture (inactivated) 1 ml S/C	Annual	
2	Canids	Canine distemper , Canine adenoviral infection, canine parvo viral infection	Canine distemper + canine adenovirus type 2 (CAV-2) + canine parvo virus vaccine (attenuated live virus) 1 ml S/C	Annual	

		Rabies	Rabies cell culture (inactivated) 1 ml S/C	Annual	
3	Ursids	Rabies	Rabies cell culture (inactivated) 1 ml S/C	Annual	
4	Birds	New Castle Disease	Lasota vaccine Through D/W	Annual	

De-worming Schedule of animals

Sl.No.	Species	Drug used	Month
1	Anseriformes (ducks and geese)	Fenbendazole – 10mg /kg P/O	3 months interval
2	Galliformes (pheasants)	Fenbendazole – 20mg /kg P/O	3 months interval
3	Ciconiiformes (spoonbill & ibis)	Fenbendazole – 25mg /kg P/O	3 months interval
4	Psittaciformes (parrots & parakeets)	Albendazole – 20 mg/kg P/O	3 months interval
5	Pelican	Fenbendazole – 20mg /kg P/O	3 months interval
6	Columbiformes (pigeons & doves)	Fenbendazole – 20mg /kg P/O	3 months interval
7	Raptors	Fenbendazole – 20mg /kg P/O	3 months interval
8	Ratites	Albendazole – 10 mg/kg P/O	3 months interval
9	Owls	Fenbendazole – 25mg /kg P/O	3 months interval
10	Snakes	Fenbendazole – 25mg /kg P/O	3 months interval
11	Crocodiles and tortoises	Fenbendazole – 50mg /kg P/O	3 months interval
12	Deers and antelopes	Ivermectin – 0.2 mg /kg P/O	3 months interval
13	Porcupine	Fenbendazole – 20mg /kg P/O	3 months interval
14	Squirrels	Fenbendazole – 20mg /kg P/O	3 months interval
15	Small cats	Fenbendazole – 25mg /kg P/O	3 months interval

16	Big cats	Combination of Fenbendazole, praziquantel and pyrantel pamoate	3 months interval
17	Primates	Fenbendazole – 25mg /kg P/O	3 months interval
18	Jackals	Fenbendazole – 50mg /kg P/O	3 months interval
19	Bears	Fenbendazole – 25mg /kg P/O	3 months interval
20	Wild boar	Ivermectin – 0.2 mg /kg P/O	3 months interval
21	Hippopotamus	Ivermectin – 0.2 mg /kg P/O	3 months interval

*Routine faecal sample examination is done for all zoo collections at 3 months interval for estimation of parasitic load and if found positive, therapeutic drugs at prescribed doses will be included.

Disinfection Schedule

Sl.No.	Species	Type of enclosure	Disinfectant used and method	Frequency of disinfection
1	All species	Open enclosures, animal houses and walkways	Kohrsolin- Th (gluteraldehyde disinfectant) as spray	1 month
2	All species	Entrance of zoo, animal houses, service gate, zoo hospital & feed storage room	1% potassium permanganate solution as food dip and wheel dip	Daily
3	All species	Drinking water	Sokrena (didecyl dimethyl ammonium chloride) as water sanitizer	Daily

Developmental Works

Construction of new enclosures:

Nile crocodile:



A scientifically designed spacious enclosure for is constructed to house a pair of Nile crocodiles. Previously these crocodiles were housed in a semi-permanent enclosure.

Hyena, Indian Gaur and Wild dog are expected to receive from Kanpur zoo, Vandalur zoo and Vishakapatnam zoo respectively as per the approved animal exchange programme. Hence the required enclosures are constructed.



Enclosure Maintenance:

Painting of walk-through aviary:



Replacement of chain-link mesh in Hanuman Langur Enclosure:



Enrichment in Asiatic Lion Enclosure:



Education and Awareness Programme:

Summer Camp – 2017



Summer camp was conducted in Pilikula Biological Park for the students of various schools, the camp duration was for 12 days starting from 12th April to 23rd April .About 100 odd students had attended .Students were made to involve in different activities such as Nature walk, cane weaving, wildlife photography, puppetry, wood carving, art and craft, painting, Bird watching, clay modelling etc

World Environment Day



World environment day was organised in Pilikula Biological Park on 05.06.2017. On the eve of this programme we had invited the high school students from different schools for drawing competition and quiz competition on the theme “**connecting with nature**”. Nearly 500 children from schools of Mangalore and distant places like Udupi, Bhradhavar, Puttur , Sulia and Honnavar participated in this program.

Budding artists exhibited their versatile talent at art via the drawing competition. The Quiz competition saw eager participants trying to answer the question centered on Bats, Eagles, Bears, pollinators, primates and other endangered animals. The winners were honoured with awards, Educational kits and certificates.

Wildlife Week – 2017

Every year Wildlife Week is celebrated at Pilikula Biological Park in a grand manner. School children and college students from Mangaluru and distant places like Udupi, Bhradhavara, Sullia and Honnavara participated in this programme. Various competitions such as drawing, essay, collage, fancy dress and quiz were conducted for school children and college students on the theme “Nature and Wildlife”.



Important Events and happenings:

Swachh Bharath Abhyan by Indian Oil Corporation Limited in Pilikula:



Indian Oil Corporation Limited under the programme Swachh Bharath Abhyan donated dust bins to Pilikula Biological Park.

Adoption of Tigress ‘Rani’ by Kudremukha Iron Ore Company Limited:

A cheque of Rs.2.5 lakhs on behalf of KIOCL is handed by Smt.Premalatha, MLA, Hariyana, w/o Sri Chaudary Berander Singh, Central Minister of Ore to Pilikula Biological Park.



Introduction of battery vehicles:



The old damaged three wheel battery vehicle is replaced by new comfortable four wheel batter vehicle for the benefit of visitors.

Inauguration of I and II phase of Green Belt Development Project – sponsored by Mangalore Refinery and Petrochemicals Limited.



Sri B Ramanatha Rai, Minister for Forests, Ecology and Environment, Govt. of Karnataka inaugurating the MRPL sponsored Green Belt Development Project in Pilikula Biological Park.



Seasonal special arrangements for upkeep of animals:

Monsoon Preparation:

During monsoon, June to August rainfall is very high in this region. Hence prior to onset of monsoon, work of cleaning the debris all along the compound wall, cutting of dead

and other trees which are posing danger to the moats and compound wall are cleared and proper arrangements are made for the free flow of storm water.

Summer Preparation:

During summer seasons specially March to May, weather of this region is sunny and very hot. Hence dried leaf litter spread into adjoining enclosures are removed so as to avoid fire. Water sprinklers are provided in the display enclosure so as to keep the area cool. The roofs of the enclosures are painted with lime and animal house are provide with fan and proper ventilation.



Spraying water in animal house



Providing fan in animal house



Painting lime to roof of animal house.

Precaution for Avian Influenza:

As a part of disease control stringent protocols to prevent the entry of such diseases into the zoo are being followed. Providing a large foot dip at each entry so that even the vehicle coming inside the zoo are properly disinfected, foot dips at the entrance of each enclosure, limiting the contact of zoo collection with wild and other migratory birds



through proper fencing and isolation of water bodies and disinfecting the visitors pathway are the measures adopted to avoid the entry of virus. Strict instructions are given to the keepers regarding the maintenance of the sanitation level at the zoo and are also advised not to rear any birds at their home. Proper quarantine of newly arrived collection and appropriate necropsy of the animals that have died are also done.

Animal acquisition/transfer/exchange:

A.	Animals arriving in the Zoo			
	Species	Number (M:F)	From	Date of Arrival
	Bengal Tiger	0:1	Bannerghatta Biological Park, Bengaluru, Karnataka	21.06.2017
	Hippopotamus	0:1	Bannerghatta Biological Park, Bengaluru, Karnataka	21.06.2017
	Lion	1:0	Udaipur Zoo, Rajasthan	12.07.2017
B	Animals going from the Zoo			
	Species	Number (M:F)	Going to	Date of deposition
	Common Palm Civet	1:1	Bannerghatta Biological Park, Bengaluru, Karnataka	22.06.2017
	Bengal Tiger	1:0	Bannerghatta Biological Park, Bengaluru, Karnataka	22.06.2017
	Bengal Tiger	1:0	Udaipur Zoo, Rajasthan	13.07.2017
	Lion	0:1	Udaipur Zoo, Rajasthan	13.07.2017

Animal Adoption Details:

Pilikula Biological Park has an animal adoption scheme where general public or institutions can adopt an animal for a specific period of time by paying its maintenance expenses. This amount will be used for the upkeep of the adopted animal like the expense of food, medicine and general maintenance. Certain privileges for the donors are provided as a sign board of donors detail

S.No.	Donor	Amount
1	Mangalore Electricity Supply Company Ltd.(MESCOM)	4,00,000.00
2	Kudremukha Iron Ore Company Limited (KIOCL)	2,50,000.00
3	Cardolite Chemicals India Pvt.Ltd.	1,00,000.00
4	Sri Pinaki Das	20,000.00
5	Sri H.S. Bhat	15,000.00
6	Smt Sharada Beedu	6,000.00
7	Sri C Upendra Kamath	5,000.00
8	Sri Madhukar Rao	2,000.00

Annual Inventory of Animals:

Endangered Species*

Part-I

S.No.	Animal Name	Scientific Name	Opening Stock 01.04.2017				Births			Acquisitions			Disposals			Deaths			Closing Stock 31.03.2018				
			M	F	U	T	M	F	U	M	F	U	M	F	U	M	F	U	M	F	U	T	
Bird																							
1	Eagle White Bellied Sea	<i>Haliaeetus leucogaster</i>	0	0	1	1	0	0	0	0	0	0	0	0	0	0	0	0	0	0	1	1	
2	Fowl Jungle Grey	<i>Gallus sonneratii</i>	1	1	0	2	0	0	0	0	0	0	0	0	0	0	0	0	0	1	1	0	2
3	Peafowl	<i>Pavo cristatus</i>	7	3	0	10	2	1	0	0	0	0	2	1	0	0	0	0	0	7	3	0	10
4	Peafowl White/Leucustic	<i>Pavo cristatus</i>	2	2	0	4	0	0	0	0	0	0	0	0	0	0	0	0	0	2	2	0	4
5	Spoonbill White	<i>Platalea leucorodia</i>	4	2	0	6	0	0	0	0	0	0	0	0	0	0	1	0	4	1	0	5	
6	Vulture White Scavenger	<i>Neophron percnopterus</i>	0	0	1	1	0	0	0	0	0	0	0	0	0	0	0	0	0	0	0	1	1
Total Bird			14	8	2	24	2	1	0	0	0	0	2	1	0	0	1	0	14	7	2	23	
Mammal																							
7	Bear Sloth	<i>Ursus ursinus</i>	1	1	0	2	0	0	0	0	0	0	0	0	0	0	0	0	1	1	0	2	
8	Black Buck	<i>Antelope cervicapra</i>	20	23	0	43	1	2	0	0	0	0	0	0	0	2	0	0	19	25	0	44	
9	Cat Jungle	<i>Felis chaus</i>	3	2	0	5	0	1	0	0	0	0	0	0	0	0	0	0	3	3	0	6	
10	Cat Leopard	<i>Prionailurus bengalensis</i>	0	2	0	2	0	0	0	0	0	0	0	0	0	0	0	0	0	2	0	2	
11	Civet Common Palm	<i>Paradoxurus hermaphroditus</i>	5	5	0	10	2	1	0	3	4	0	5	5	0	0	0	0	5	5	0	10	
12	Civet Indian Small	<i>Viverricula indica</i>	2	1	0	3	0	0	0	0	0	0	0	0	0	0	0	0	2	1	0	3	
13	Deer Mouse	<i>Moschiola indica</i>	1	1	0	2	0	0	0	0	0	0	0	0	0	0	1	0	1	0	0	1	
14	Jackal	<i>Canis aureus</i>	24	19	0	43	4	2	0	0	0	0	5	5	0	0	0	0	23	16	0	39	
15	Langur Common	<i>Semnopithecus entellus</i>	2	0	0	2	0	0	0	0	0	0	0	0	0	0	0	0	2	0	0	2	
16	Leopard/ Panther	<i>Panthera pardus</i>	4	5	0	9	0	0	0	0	0	0	0	0	0	0	0	0	4	5	0	9	
17	Lion Indian	<i>Panthera leo persica</i>	1	1	0	2	0	0	0	0	0	0	0	0	0	0	0	0	1	1	0	2	
18	Loris Slender	<i>Loris lydekkerianus</i>	1	0	0	1	0	0	0	0	0	0	0	0	0	0	0	0	1	0	0	1	
19	Macaque Bonnet	<i>Macaca radiata</i>	4	3	0	7	1	0	0	0	0	2	0	0	0	0	0	3	3	0	6		
20	Macaque Lion Tailed	<i>Macaca silenus</i>	1	1	0	2	0	0	0	0	0	0	0	0	0	0	0	0	1	1	0	2	
21	Macaque Rhesus	<i>Macaca mulatta</i>	5	1	0	6	0	0	0	0	0	0	0	0	0	1	0	0	4	1	0	5	
22	Mongoose Indian Grey	<i>Herpestes edwardsi</i>	4	4	0	8	1	1	0	0	0	0	0	0	0	0	0	0	5	5	0	10	
23	Squirrel Flying	<i>Petinomys fuscocapillus</i>	0	1	0	1	0	0	0	0	0	0	0	0	0	0	0	0	0	1	0	1	
24	Squirrel Giant Malabar	<i>Ratufa indica</i>	3	2	0	5	0	0	0	0	0	0	0	0	0	0	0	0	3	2	0	5	
25	Tiger Bengal	<i>Panthera tigris tigris</i>	9	2	0	11	0	0	0	1	0	2	0	0	0	0	0	0	7	3	0	10	
Total Mammal			90	74	0	164	9	7	0	3	5	0	14	10	0	3	1	0	85	75	0	160	

Reptile																						
26	Cobra Indian	<i>Naja naja</i>	0	0	18	18	0	0	48	0	0	129	0	0	177	0	0	0	0	18	18	
27	Cobra Indian Melenstic	<i>Naja naja</i>	0	0	1	1	0	0	0	0	0	0	0	0	0	0	0	0	0	1	1	
28	Cobra King	<i>Ophiophagus hannah</i>	5	3	0	8	0	0	0	3	1	0	2	0	0	0	0	6	4	0	10	
29	Crocodile Gharial	<i>Gavialis gangeticus</i>	0	0	3	3	0	0	0	0	0	0	0	0	0	0	0	0	0	3	3	
30	Crocodile Marsh	<i>Crocodylus palustris</i>	1	1	6	8	0	0	0	0	0	0	0	0	0	0	0	1	1	6	8	
31	Monitor Lizard	<i>Varanus bengalensis</i>	0	0	5	5	0	0	0	0	0	2	0	0	2	0	0	0	0	5	5	
32	Python Indian Rock	<i>Python molurus molurus</i>	0	0	13	13	0	0	76	0	0	72	0	0	148	0	0	0	0	13	13	
33	Python Reticulated	<i>Python reticulatus</i>	2	2	0	4	0	0	0	0	0	0	0	0	0	0	0	2	2	0	4	
34	Snake Keelback Checkered	<i>Xenochrophis piscator</i>	0	0	10	10	0	0	38	0	0	13	0	0	51	0	0	0	0	10	10	
35	Snake Rat	<i>Ptyas mucosus</i>	0	0	21	21	0	0	73	0	0	47	0	0	120	0	0	0	0	21	21	
36	Turtle Indian Soft-Shelled	<i>Lissemys punctata punctata</i>	0	0	13	13	0	0	4	0	0	1	0	0	5	0	0	0	0	13	13	
37	Turtle Indian Black	<i>Melanochelys trijuga</i>	0	0	108	108	0	0	8	0	0	4	0	0	5	0	0	0	0	115	115	
38	Viper Russells	<i>Vipera russellii</i>	0	0	7	7	0	0	47	0	0	18	0	0	65	0	0	0	0	7	7	
Total Reptile			8	6	205	219	0	0	294	3	1	286	2	0	573	0	0	0	9	7	212	228
Total Animals			112	88	207	407	11	8	294	6	6	286	18	11	573	3	2	0	108	89	214	411

Other Species

Part-II

S.No.	Animal Name	Scientific Name	Opening Stock 01.04.2017				Births			Acquisitions			Disposals			Deaths			Closing Stock 31.03.2018				
			M	F	U	T	M	F	U	M	F	U	M	F	U	M	F	U	M	F	U	T	
Bird																							
1	Budgerigar	<i>Melopsittacus undulatus</i>	0	0	61	61	0	0	0	0	0	0	0	0	0	0	1	2	0	0	0	58	58
2	Cockatiel	<i>Nymphicus hollandicus</i>	3	2	0	5	0	0	0	0	0	0	0	0	0	0	0	0	0	3	2	0	5
3	Conure Sun	<i>Aratinga solstitialis</i>	0	1	0	1	0	0	0	0	0	0	0	0	0	0	0	0	0	1	0	0	1
4	Dove Diamond	<i>Geopelia cuneata</i>	0	0	6	6	0	0	0	0	0	0	0	0	0	0	0	0	0	0	6	6	
5	Duck Caroline/Wood	<i>Aix sponsa</i>	1	1	0	2	0	0	0	0	0	0	0	0	0	0	0	0	1	1	0	2	
6	Duck Mallard	<i>Anas platyrhynchos</i>	0	0	9	9	0	0	0	0	0	0	0	0	0	0	0	0	0	0	9	9	
7	Duck Mandarin	<i>Aix galericulata</i>	1	1	0	2	0	0	0	0	0	0	0	0	0	0	0	0	1	1	0	2	
8	Duck Muscovy	<i>Cairina moschata</i>	6	4	0	10	0	0	0	0	0	0	0	0	0	0	0	0	6	4	0	10	
9	Emu	<i>Dromaius novaehollandiae</i>	3	2	0	5	0	0	0	0	0	0	0	0	0	0	0	0	3	2	0	5	

10	Finch Zebra	Taeniopygia guttata	0	0	8	8	0	0	0	0	0	0	0	0	0	0	0	0	0	8	8
11	Fowl Guneaia	Numida meleagris	9	6	0	15	0	0	0	0	0	0	0	0	0	0	0	9	6	0	15
12	Fowl Red Jungle	Gallus gallus	22	8	0	30	0	0	0	0	0	0	0	0	0	0	22	8	0	30	
13	Fowl Red Spur	Galloperdix spadicea	1	2	0	3	0	0	0	0	0	0	0	0	0	0	1	2	0	3	
14	Goose	Anser anser	0	0	27	27	0	0	4	0	0	0	0	0	0	0	0	0	31	31	
15	Hen White Breasted Water	Amaurornis phoenicurus	1	1	0	2	0	0	0	0	0	0	0	0	0	0	1	1	0	2	
16	Heron Purple	Ardea purpurea	0	0	2	2	0	0	0	0	0	0	0	0	0	0	0	0	2	2	
17	Ibis White	Threskiornis melanocephala	0	0	16	16	0	0	0	0	0	0	0	0	0	0	0	0	16	16	
18	Lovebird Peach Faced	Agapornis roseicollis	0	0	1	1	0	0	0	0	0	0	0	0	0	0	0	0	1	1	
19	Kite Brahminy	Haliastur indus	0	0	3	3	0	0	0	0	0	0	0	0	0	0	0	0	3	3	
20	Kite Pariah/Black	Milvus migrans	0	0	19	19	0	0	0	0	3	0	0	3	0	0	0	0	19	19	
21	Koel	Eudynamis scolopaceus	0	2	0	2	0	0	0	0	0	0	0	0	0	0	0	2	0	2	
22	Macaw Blue and Gold	Ara ararauna	0	1	0	1	0	0	0	0	0	0	0	0	0	0	0	1	0	1	
23	Ostrich	Struthio camelus	2	0	0	2	0	0	0	0	0	0	0	0	0	0	2	0	0	2	
24	Owl Barn	Tyto alba	0	0	10	10	0	0	0	0	4	0	0	4	0	0	0	0	10	10	
25	Owl Bay	Phodilus badius	0	0	1	1	0	0	0	0	0	0	0	0	0	0	0	0	1	1	
26	Owl Brown Fish	Bubo zeylonensis	0	0	2	2	0	0	0	0	1	0	0	0	0	0	0	0	3	3	
27	Owl Grey Horned	Bubo bengalensis	0	0	1	1	0	0	0	0	0	0	0	0	0	0	0	0	1	1	
28	Owl Scoups	Otus scops	0	0	2	2	0	0	0	0	0	0	0	0	0	0	0	0	2	2	
29	Parakeet Alexandrine	Psittacula eupatria	2	2	0	4	0	0	0	1	1	0	0	0	0	0	3	3	0	6	
30	Parakeet Blossom Headed	Psittacula cyanocephala	0	0	2	2	0	0	0	1	1	0	0	0	0	0	1	1	2	4	
31	Parakeet Rose Ringed	Psittacula krameri	11	13	0	24	0	0	0	1	3	0	0	0	0	0	12	16	0	28	
32	Parakeet Rose Ringed Grey	Psittacula krameri	0	0	2	2	0	0	0	0	0	0	0	0	0	0	0	0	2	2	
33	Parakeet Rose Ringed Blue	Psittacula krameri	0	0	2	2	0	0	0	0	0	0	0	0	0	0	0	0	2	2	
34	Pelican Spot Billed/Grey	Pelicanus phillippenis	1	1	0	2	0	0	0	0	0	0	0	0	0	0	1	1	0	2	
35	Pheasant Lady Amherst	Chrysolophus amherstiae	2	2	0	4	0	0	0	0	0	0	0	0	0	0	2	2	0	4	
36	Pheasant Red Golden	Chrysolophus pictus	3	1	0	4	0	0	0	0	0	0	0	0	0	0	3	1	0	4	
37	Pheasant Ring Necked	Phasianus colchicus	1	1	0	2	0	0	0	0	0	0	0	0	0	0	1	1	0	2	

38	Pheasant Silver	Lophura nycthemera	3	1	0	4	0	0	0	0	0	0	0	0	0	0	0	3	1	0	4	
39	Pheasant Yellow Golden	Chrysolophus pictus	1	1	0	2	0	0	0	0	0	0	0	0	0	0	0	1	1	0	2	
40	Pigeon Blue Rock	Columba livia	0	0	8	8	0	0	0	0	0	0	0	0	0	0	0	0	0	8	8	
41	Pigeon Fantail		0	0	3	3	0	0	0	0	0	0	0	0	0	0	0	0	0	3	3	
42	Sparrow Java	Padda oryzivora	0	0	5	5	0	0	0	0	0	0	0	0	0	0	0	0	0	5	5	
43	Stork Painted	Mycteria leucocephala	0	0	4	4	0	0	0	0	0	0	0	0	0	0	0	0	0	4	4	
44	Teal Ringed	Callonetta leucophrys	1	1	0	2	0	0	0	0	0	0	0	0	0	0	0	1	1	0	2	
45	Teal Lesser Whistling	Dendrocygna javanica	0	0	13	13	0	0	0	0	0	0	0	0	0	0	0	0	0	13	13	
Total Bird			74	54	207	335	0	0	4	3	5	8	0	0	7	1	2	0	77	59	209	345

Mammal

46	Deer Barking	Muntiacus muntjak	10	13	0	23	2	1	0	0	0	0	0	0	0	1	0	0	11	14	0	25
47	Deer Sambar	Cervus unicolor	15	18	0	33	1	1	0	0	0	0	0	0	0	2	0	0	16	17	0	33
48	Deer Spotted	Axis axis	20	22	0	42	0	2	0	0	0	0	0	0	3	1	0	0	17	23	0	40
49	Hare Black Naped	Lepus nigricollis	1	1	0	2	0	0	0	0	0	0	0	0	0	0	0	0	1	1	0	2
50	Hippopotamus	Hippopotamus amphibius	1	1	0	2	0	0	0	0	1	0	0	0	0	0	0	0	1	2	0	3
51	Lion Hybrid	Panthera leo	0	3	0	3	0	0	0	1	0	0	0	1	0	0	0	0	1	2	0	3
52	Mongoose Ruddy	Herpestes smithii	1	1	0	2	0	0	0	0	0	0	0	0	0	0	0	0	1	1	0	2
53	Pig Wild	Sus scrofa	7	9	0	16	1	2	0	0	0	0	0	0	1	0	0	0	7	11	0	18
54	Porcupine Indian	Hystrix indica	4	5	0	9	0	0	0	0	0	0	0	0	0	0	0	0	4	5	0	9
Total Mammal			59	73	0	132	4	6	0	1	1	0	0	1	0	5	3	0	59	76	0	135

Reptile

55	Boa Common Sand	Gongylophis conicus	0	0	4	4	0	0	0	0	0	2	0	0	2	0	0	0	0	0	4	4
56	Boa Red Sand	Eryx johnii	0	0	11	11	0	0	0	0	0	0	0	0	2	0	0	0	0	0	9	9
57	Boa Whitaker's	Eryx whitakeri	0	0	12	12	0	0	13	0	0	18	0	0	31	0	0	0	0	0	12	12
58	Caiman Spectacled	Caiman crocodilus	2	2	0	4	0	0	0	0	0	0	0	0	0	0	0	0	2	2	0	4
59	Crocodile African Dwarf	Orsterlaemess tetraspis	0	0	1	1	0	0	0	0	0	0	0	0	0	0	0	0	0	0	1	1
60	Crocodile Nile	Crocodylus niloticus	0	0	3	3	0	0	0	0	0	0	0	0	0	0	0	0	0	0	3	3
61	Crocodile Siamensis	Crocodylus siamensis	0	0	5	5	0	0	0	0	0	0	0	0	0	0	0	0	0	0	5	5

62	Krait Common Indian	Bungarus caeruleus	0	0	2	2	0	0	0	0	0	3	0	0	3	0	0	0	0	2	2	
63	Racer Banded	Argyrogena fasciolata	0	0	2	2	0	0	0	0	0	0	0	0	0	0	0	0	0	2	2	
64	Snake Bronzeback Tree	Dendrelaphis tristis	0	0	8	8	0	0	0	0	4	0	0	4	0	0	0	0	8	8		
65	Snake Ceylon Cat	Boiga ceylonensis	0	0	5	5	0	0	0	0	1	0	0	1	0	0	0	0	5	5		
66	Snake Common Wolf	Lycodon aulicus	0	0	5	5	0	0	6	0	4	0	0	10	0	0	0	0	5	5		
67	Snake Green Vine	Ahaetulla nasuta	0	0	5	5	0	0	3	0	3	0	0	6	0	0	0	0	5	5		
68	Snake Keelback Striped	Amphiesma stolatum	0	0	10	10	0	0	12	0	8	0	0	20	0	0	0	0	10	10		
69	Snake Montane Trinket	Coelognathus helena monticollaris	0	0	5	5	0	0	6	0	4	0	0	10	0	0	0	0	5	5		
70	Terrapin Red Eared	Trachemys scripta	0	0	28	28	0	0	4	0	4	0	0	0	0	0	0	0	36	36		
71	Tortoise Indian Star	Geochelone elegans	0	0	45	45	0	0	0	0	0	0	0	1	3	0	0	0	41	41		
72	Turtle Giant Soft shell	Pelochelys cantorii	1	0	0	1	0	0	0	0	0	0	0	0	0	0	1	0	0	1		
73	Viper Hump Nosed Pit	Hypnale hypnale	0	0	6	6	0	0	5	0	2	0	0	7	0	0	0	0	6	6		
74	Viper Malabar Pit	Trimeresurus malabaricus	0	0	1	1	0	0	0	0	1	0	0	0	0	0	0	0	2	2		
Total Reptile			3	2	158	163	0	0	49	0	0	54	0	0	96	1	3	0	3	2	161	166
Pisces of Western Ghats																						
75	Hunase / Murangi	Lepidocephalus thermalis	0	0	5	5	0	0	0	0	0	0	0	0	0	0	0	0	5	5		
76	Kijan	Puntius filamentosus	0	0	12	12	0	0	0	0	0	0	0	0	0	0	0	0	12	12		
77	Kol kijan	Rasbora daniconius	0	0	8	8	0	0	0	0	0	0	0	0	0	0	0	0	8	8		
78	Kuchhu	Channa striatus	0	0	9	9	0	0	0	0	0	0	0	0	0	0	0	0	9	9		
79	Madanji / Korava	Chenna punctatus	0	0	6	6	0	0	0	0	0	0	0	0	0	0	0	0	6	6		
80	Moogumalli / Kudian	Aplocheilus lineatus	0	0	8	8	0	0	0	0	0	0	0	0	0	0	0	0	8	8		
81	Mugudu / Magur	Clarius batrachus	0	0	14	14	0	0	0	0	0	0	0	0	0	0	0	0	14	14		
82	Mulvel / Kuri meenu	Labeo nigriscens	0	0	2	2	0	0	0	0	0	0	0	0	0	0	0	0	2	2		
Total Fish			0	0	64	64	0	0	0	0	0	0	0	0	0	0	0	0	64	64		
Total Animals			136	129	429	694	4	6	53	4	6	62	0	1	103	7	8	0	139	137	434	710

Mortality of Animals:

S.No.	Animal Name	Scientific Name	Sex	Date of Death	Reason of Death
Birds					
1	Spoonbill White	<i>Platalea leucorodia</i>	Female	17.05.2017	Shock due to asphyxia
2	Budgerigar	<i>Melopsittacus undulatus</i>	Female	22.06.2017	Snake attack
3	Budgerigar	<i>Melopsittacus undulatus</i>	Male	16.08.2017	Enteritis
4	Budgerigar	<i>Melopsittacus undulatus</i>	Female	11.12.2017	Egg bound
Mammal					
5	Black Buck	<i>Antilope cervicapra</i>	Male	27.07.2017	Shock due to hypoglycemia
6	Black Buck	<i>Antilope cervicapra</i>	Male	05.10.2017	Impaction
7	Deer Mouse	<i>Moschiola indica</i>	Female	11.06.2017	Pneumonia
8	Macaque Rhesus	<i>Macaca mulatta</i>	Male	21.06.2017	Senility
9	Deer Barking	<i>Muntiacus muntjak</i>	Male	12.07.2017	Infighting
10	Deer Sambar	<i>Cervus unicolor</i>	Female	22.12.2017	Snake bite
11	Deer Sambar	<i>Cervus unicolor</i>	Female	13.02.2018	Enteritis
12	Deer Spotted	<i>Axis axis</i>	Male	06.07.2017	Infighting
13	Deer Spotted	<i>Axis axis</i>	Female	22.09.2017	Impaction
14	Deer Spotted	<i>Axis axis</i>	Male	13.01.2018	Infighting
15	Deer Spotted	<i>Axis axis</i>	Male	15.03.2018	Impaction
16	Pig Wild	<i>Sus scrofa</i>	Male	23.08.2017	Infighting
Reptile					
17	Tortoise Indian Star	<i>Geochelone elegans</i>	Female	12.07.2017	Shock due to asphyxia
18	Tortoise Indian Star	<i>Geochelone elegans</i>	Male	16.08.2017	Pneumonia
19	Tortoise Indian Star	<i>Geochelone elegans</i>	Female	28.09.2017	Enteritis
20	Tortoise Indian Star	<i>Geochelone elegans</i>	Female	15.01.2018	Enteritis

List of free living wild animals within the zoo premises:

Mammals	Birds	Reptiles
Jungle Cat	Little Cormorant	Indian Cobra
Common Palm Civet	White-necked Stork	Monitor Lizard
Jackal	Pond Heron	Indian Rock Python
Indian Grey Mongoose	Night Heron	Checkered Keelback
Black Naped Hare	Cattle Egret	Rat Snake
Indian Porcupine	Common Pariah Kite	Indian Black Turtle
	Brahminy Kite	Russell's Viper
	Common Peafowl	Whitaker's Boa
	Blue Rock Pigeon	Common Indian Krait
	Roseringed Parakeet	Bronzeback Tree Snake
	Crow-Pheasant	Painted Bronzeback Tree Snake
	Indian Drongo Cuckoo	Snake
	Koel	Common Wolf Snake
	Bran or Screech Owl	Green Vine Snake
	Whitebreasted Kingfisher	Stripped Keelback Snake
	Small Green Bee-Eater	Montane Trinket Snake
	Lesser Goldenbacked	Common Trinket Snake
	Woodpecker	

	Large Green Barbet Indian Pitta Golden Oriole Racket-Tailed Drongo Grey or Ashy Drongo Whitebellied Drongo Indian Myna Tree pie House crow Iora Goldfronted Chloropsis Redwhiskered Bulbul Jungle Babbler Paradise Flycatcher Tailor Bird Magpie-Robin Yellowheaded Wagtail Purple Sunbird House Sparrow Blackheaded Munia Spotted Owlet Scops Owl	
--	---	--