



# PILIKULA BIOLOGICAL PARK

## Mangalore, Karnataka.



Tigress "Rani" with her 3 cubs in Pilikula Biological Park.

*Annual Report 2023-24*

## Contents

<b>Sl. No.</b>	<b>Particulars</b>	<b>Page No.</b>
1.	Director's Report	3-4
2	History of the Zoo	5
3	Vision	6
4	Mission	6
5	Objective	7
6	About Us	9
7	Organization Chart	9
8	Human Resources	10
9	Capacity Building of Zoo Personnel	11
10	Zoo Advisory Committee	11
11	Statement of income and expenditure of the zoo	12
12	Daily feed schedule of animals	19
12	Vaccination schedule of animals	19
13	De-worming schedule of animals	20
14	Disinfection schedule	21
15	Development works	21
16	Educational and awareness programmes	21
17	Animal Adoption, Donation and Financial Assistance	22
18	Seasonal special arrangements for upkeep of animals	23
19	Precaution for Avian Influenza	23
20	Animal acquisition/transfer/exchange	25
21	Annual inventory of animals	35
22	List of free living wild animals within the zoo premises	36

## **DIRECTOR'S REPORT**

Pilikula Biological Park, a major component of Pilikula Nisarga Dhama, is a large zoo situated on the outskirts of Mangalore city. This zoo, along with its sister components, offers visitors a unique blend of naturalistic, scientific, and cultural experiences. As one of coastal Karnataka's premier tourist destinations, Pilikula Biological Park attracts numerous visitors each year.

Established in 2001 and opened to the public in 2004, the zoo spans an impressive 82 hectares within Pilikula Nisarga Dhama. The park is home to over 1,100 animals representing 108 species, including mammals, birds, reptiles, and fish. Notably, Pilikula provides a safe place for 514 animals of 40 endangered species.

Pilikula Biological Park aims to establish itself as a world-class zoo in the Western Ghats region, promoting the conservation of the region's fauna and flora through education, scientific research, captive breeding, and rescue center operations, as outlined in the approved master plan.

The zoo is managed by the Pilikula Development Authority, relying on funding from corporate social responsibility (CSR) initiatives, donations from animal lovers, philanthropists, and the general public, as well as animal adoption programs. Despite receiving no state government funding for maintenance, the zoo has successfully minimized expenses.

Since its inception, Pilikula has strived to recreate the Western Ghats ecosystem, recognizing its status as one of the world's 34 biodiversity hotspots. The Green Belt project was launched to achieve this vision. The project involves replacing exotic Acacia plants with endemic Western Ghats species in a phased manner. The first phase has been completed successfully, and the second phase is underway, covering approximately 30 acres.

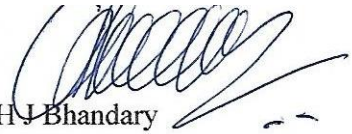
Pilikula Biological Park serves as a model zoo, exemplifying a commitment to providing an animal-friendly atmosphere. By leveraging its expansive land area, the zoo caters to the species-specific requirements of each animal, offering ample space for them to exhibit natural behavior and breeding. This meticulous simulation of their natural habitats has yielded remarkable results, extending beyond mere physical well-being to encompass psychological well-being as well. This is evident in the successful reproduction of animals and the absence of stereotypic behaviors.

The zoo is also home to a pioneering conservation breeding center for King Cobras. Our breeding program has achieved notable success, with over 150 King Cobras bred in captivity and released into their natural habitat.

Notably, Pilikula Biological Park operates with a remarkably lean staff, setting a commendable example for efficient management. Despite being categorized as a large zoo, our institution demonstrates that exceptional animal care and conservation can be achieved with minimal resources

Pilikula Biological Park serves as a miniature representation of the Western Ghats, offering a glimpse into the region's rich biodiversity. To create an immersive experience, efforts are underway to design enclosures that resembles the animals' natural habitats, complete with environmental enrichment.

The park also engages in various outreach activities, educational programs tailored for students, and research initiatives, all aimed at promoting conservation awareness and fostering a deeper appreciation for the Western Ghats' unique ecosystem.



HJ Bhandary  
Director  
Pilikula Biological Park, Mangalore

### **History of the zoo:**

Pilikula the name derived from the local Tulu language 'Pili' means Tiger and 'Kula' means pond. It is said that in the past years Tigers were extensively found in this locality. The Tigers used to drink water from a huge pond found in the area hence the name "Pilikula". The natural tiger caves still exist in the locality.

Pilikula Biological Park is a major component of Pilikula Nisarga Dhama. Kadri deer park and mini zoo was closed as per the order of Central Zoo Authority, animals from defunct zoo were shifted to Pilikula. Pilikula Biological Park was planned with the valuable guidance of Sri Puspha Kumar IFS (Retd.) the then PCCF of Andhra Pradesh.

Pilikula Biological Park was inaugurated on 12.01.2001 by the Hon'ble Chief Minister of Karnataka. The park has since been recognized by the Central Zoo Authority vide letter No. 23-3/97-CZA(5) dated 12.8.1999 and the layout plan approved by the Central Zoo Authority vide letter No.F.No.23-1/97-CZA(N) dated 4.6.2002. Zoo is run by the Pilikula Development Authority. Maintenance of the zoo including development of infrastructure, feeding, health care of the animals are done by the Authority with the help of donation from institutions, corporate sectors, CSR funds and animal lovers. There is very little contribution from the Government sector. Pilikula Nisarga Dhama Society was established in April 1997. The Society comprised of elected representatives and heads of important public institutions and is presided by the district in-charge minister. The Governing Council comprised of key Officers of various Government departments. The Deputy Commissioner of Dakshina Kannada District is the Chairman of Pilikula Development Authority.



*Entrance of Pilikula Biological Park.*

**Pilikula Nisarga Dhama:**

Pilikula Nisarga Dhama (Pilikula) is a major eco-education and tourism development project promoted by the District Administration of Dakshina Kannada in the beautiful city of Mangalore in Karnataka State, India.

Pilikula is an integrated theme park with a wide variety of features; Pilikula has many attractions of cultural and scientific interest. Pilikula extends over an area of 375 acres along the banks of Gurupura River.

Pilikula presently includes a Biological Park, Botanical and Medicinal Gardens, Regional Science Centre, Lake Garden and Boating, Heritage and Artisan Village, Golf Course, Amusement and Water Park.

Pilikula probably the first project of its kind in India, it is inspired by the concept of providing a wholesome experience of the native natural and cultural heritage of the region along with all modern recreational facilities.

It is also an attempt to showcase the rich native heritage and coastal culture of the people of Dakshina Kannada district. In short, Pilikula is one-stop education and recreation destination in India - a must visit place for all visitors to this part of the world.



A view of Pilikula Lake

**Vision:**

To develop a zoo of international standards in the Western Ghats region mainly for in-situ and ex-situ conservation of Western Ghats species.

**Mission:**

To promote the conservation of fauna and flora of Western Ghats region through education, scientific research, captive breeding and establishment of rescue centre.

### **Strategy of the Zoo:**

The novel concept of the Pilikula Biological Park is to run a zoo by an authority with generous financial help from philanthropist, corporate bodies, institutions, general public, grants from government and income generated by the entry fee and rent from other facilities.



*Snake house in Pilikula Biological Park*

### **Objective:**

- Showcase the rich fauna and flora of the Western Ghats.
- Conservation and breeding of endangered species found in Western Ghats region for display, exchange, breeding loans and rehabilitation to the wild in keeping with the National Policy and guidelines from time to time.
- Promote awareness among the public in general and students in particular on the need to protect and conserve wildlife and its habitat.
- Encourage research and scientific studies useful for zoo and wildlife management.
- To function as a rescue centre for wild animals posing danger to the humans, wild animals entering into human habitation, orphaned and injured animals in this region.
- Recreation for the purpose of providing wholesome, healthy educational activity by utilizing the natural features.

**About us:**

S.No.	Particulars	Information
Basic information about the zoo		
1	Name of the Zoo	Pilikula Biological Park
2	Year of establishment	2001
3	Address of the zoo	Director Pilikula Biological Park Vamanjoor
4	State	Karnataka
5	Telephone number	+91 824 2263300
6	Fax number	+91 824 2263300
7	E-mail address	pilikulazoo@gmail.com
8	Website	www.pilikulazoo.com
9	Distance from nearest	Airport: 15km
		Railway station: 12km
		Bus stand: 12km
10	Recognition valid up to	01.12.2025
11	Category of zoo	Large
12	Area (in hectares)	82
13	Number of visitors 2022-23	Adult: 3,92,806
		Children (school and college): 2,13,612
		Free Entry (NGO,Clubs,Sanga etc): 7032
		Total Indians: 6,13,450
		Total Foreigners: 102
		Total Visitors: 6,13,552
14	Visitors' facilities available in zoo:	Purified Drinking Water
		First Aid
		E-buggy
		Wheel Chair
		Interlock paved roads
		Hi-Tech Toilets
		Relaxing Places
		Gardens
Cafeterias etc.		

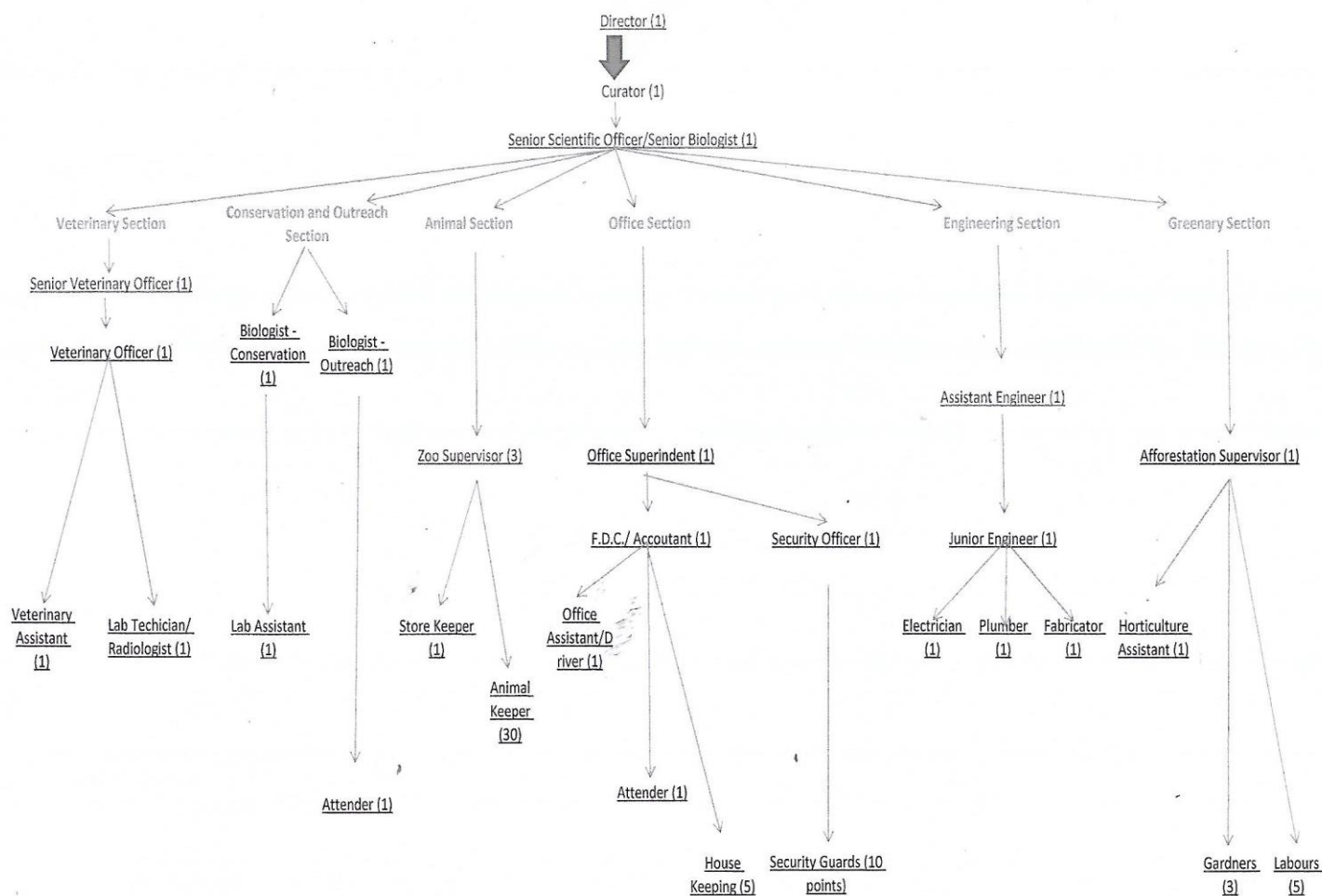


		Children Park
15	Weekly closure day of the zoo	Monday
Management personnel of the zoo		
16	Name and designation of the Office in-charge	H J Bhandary Director
17	Senior Scientific Officer	Jerald Vikram Lobo
18	Veterinary Officer	Dr. Divya Ganesh
19	Assistant Engineer	Rakesh D.P
20	Zoo Biologist	Krishna Prasad K.S
21	Veterinary Assistant	Harish P
Operator of the zoo		
22	Operator	Pilikula Development Authority
23	Address of the operator	Pilikula Development Authority Moodushedde, Mangaluru (D.K.) Karnataka – 575028
24	Phone number	+91 824 2263300, 0824-2263565
25	E-mail address	<a href="mailto:pikulazoo@gmail.com">pikulazoo@gmail.com</a> , pilikula96@gmail.com



Tiger cubs in Pilikula Biological Park

## Organization Chart



## Human Resources

### Manpower of the zoo:

SI. No.	Designation	Sanctioned Posts (Nos.)	Names of the incumbent
1	Director	1	H J Bhandary
2	Senior Scientific Officer	1	Jerals Vikram Lobo
3	Veterinary Officer	1	Dr. Divya Ganesh
4	Assistant Engineer	1	Rakesh D.P.
5	Zoo Biologist	1	Krishna Prasad K.S
6	Veterinary Assistant	1	Harish P.
7	Supervisor	1	Lingappayya
8	Office Assistant	1	Ranjan
9	Animal Care Takers	As required	Udaya Kumar

			Devendra Dinesh Kumar Kishore Kumar Jayananada Vikesh Ummer Farooq Narayana Gopalakrishna Sundara Jaya Gowda Vinith Kumar Surendra Hemanth Harish Baira Shobith
--	--	--	-----------------------------------------------------------------------------------------------------------------------------------------------------------------------------------------------------------

Note: Other required staff are pooled from Pilikula Development Authority.

**Capacity Building of Zoo Personnel:**

<b>Sl.No.</b>	<b>Name and Designation of Zoo Personnel</b>	<b>Subject Matter of Training</b>	<b>Period of Training</b>	<b>Name of the Institution where the Training Attended</b>
1	Hemanthesh Zoo Keeper	Workshop for Zoo Keepers	06 <sup>th</sup> to 09 <sup>th</sup> March 2024	S.V Zoological Park, Tirupati

**Advisory Committee:**

Date of constitution: 03.04.2012

President                      Sri. H.J Bhandary  
Director  
Pilikula Biological Park  
Mangalore

Members                      Sri Praveen Nayak K.A.S  
Commissioner  
Pilikula Development Authority  
Mangalore

Sri T. Subbaya Shetty  
Shettars Consultants  
Krishna Towers, Ladyhill,  
Mangalore

Sri N.G. Mohan  
Beta Agencies. Kadri,  
Mangalore

Assistant Conservator of Forests  
Mangalore Sub-division  
Mangalore

Mangalore Refinery and Petrochemicals Limited  
Mangalore

Animal Care Trust (R)  
Shaktinagar  
Mangalore

**Statement of income and expenditure of the zoo:**

Revenue		Expenditure	
Particulars	Amount (in lakhs)	Particulars	Amount (in lakhs)
Gate collection	138.7	Food and fodder	136.2
Rent/lease on shops	6.56	Health care of animals-veterinary	2.10
Adoption of animals/Donations	100.0	Animal Exchange	0.80
Development of Green belt - MRPL	6.22	Salary of staff	66.17
		Security staff	20.38
		Maintenance of greenery	7.39
		Cleaning staff wages	4.88
		Electricity charges	4.26

		Telephone charges	0.18
		Annual Maintenance	26.54
		Consumable materials	1.15
		Water and Electricity Maintenance	4.95
		Motor vehicle hire charges	5.32
		Developmental works	100.06
		Development of Green belt - MRPL	6.60
	<b>Total</b>	<b>251.48</b>	<b>Total 386.98</b>

### Daily feed schedule of animals:

Sl. No.	Common Name	Feed Item	Quantity	Remarks
<b>Birds</b>				
1	Eagle White Bellied Sea ( <i>Haliaeetus leucogaster</i> )	Minced meat	400g	Daily
2	Fowl Red Jungle ( <i>Gallus gallus</i> )	Wheat Poultry feed Mixed grains Sprouted grams	50g 50g 25g 50g	Daily
3	Peafowl ( <i>Pavo cristatus</i> )	Wheat Poultry feed Mixed grains Sprouted grams	250g 250g 250g 50g	Daily
4	Vulture White Scavenger ( <i>Neophron percnopterus</i> )	Minced meat	150g	Daily
5	Budgerigar ( <i>Melopsittacus undulates</i> )	Mixed grains Mixed vegetables	200g 100g	Daily
6	Cocktail ( <i>Nymphicus hollandicus</i> )	Mixed grains	25g	Daily
7	Conure Sun ( <i>Aratinga solstitialis</i> )	Mixed grains	25g	Daily
8	Duck Caroline/Wood ( <i>Aix sponsa</i> )	Wheat Poultry feed Sprouted grams	50g 25g 25g	Daily
9	Duck Mallard ( <i>Anas platyrhynchos</i> )	Wheat Sprouted grams	100g 50g	Daily
10	Duck Muscovy ( <i>Cairina moschata</i> )	Wheat Poultry feed Sprouted grams	25g 25g 50g	Daily
11	Finch Zebra ( <i>Taeniopygia guttata</i> )	Mixed grains	10g	Daily
12	Fowl Guneia ( <i>Numida meleagris</i> )	Wheat Poultry feed Mixed grains Sprouted grams	60g 60g 40g 40g	Daily

13	Goose ( <i>Anser anser</i> )	Wheat Poultry feed Sprouted grams	200g 200g 100g	Daily
14	Night Heron ( <i>Nycticorax nycticorax</i> )	Fish	100g	Daily
15	Ibis White ( <i>Threskiornis melanocephala</i> )	Fish	300g	Daily
17	Kite Brahminy ( <i>Haliastur Indus</i> )	Minced meat	100g	Daily
18	Kite Pariah/Black ( <i>Milvus migrans</i> )	Minced meat	100g	Daily
19	Ostrich ( <i>Struthio camelus</i> )	Wheat Poultry feed Mixed vegetables Sprouted grams	5kg 7kg 200g 5kg	Daily
20	Owl Barn ( <i>Tyto alba</i> )	Minced meat	75g	Six days a week
21	Owl Brown Fish ( <i>Bubo zeylonensis</i> )	Minced meat	75g	Six days a week
22	Owl Brown Wood ( <i>strix leptogrammica</i> )	Minced meat	75g	Six days a week
23	Owl Grey Horned ( <i>Bubo bengalensis</i> )	Minced meat	75g	Six days a week
24	Owl Scops ( <i>Otus scops</i> )	Minced meat	25g	Six days a week
25	Parakeet Alexandrine ( <i>Psittacula eupatria</i> )	Mixed grains Mixed vegetables Sprouted grams Fruits	10g 5g 10g 15g	Daily
26	Parakeet Blossom Headed ( <i>Psittacula cyanocephala</i> )	Mixed grains Mixed vegetables Sprouted grams Fruits	5g 5g 5g 15g	Daily
27	Parakeet Rose Ringed ( <i>Psittacula krameri</i> )	Mixed grains Mixed vegetables Sprouted grams Fruits	5g 5g 5g 15g	Daily
28	Pheasant Silver ( <i>Lophura nycthemera</i> )	Wheat Poultry feed Sprouted grams	50g 50g 25g	Daily
29	Pheasant Yellow Golden ( <i>Chrysolophus pictus</i> )	Wheat Poultry feed Sprouted grams	50g 50g 25g	Daily
30	Pigeon Blue Rock ( <i>Columba livia</i> )	Mixed grains	50g	Daily
31	Pigeon Fantail	Mixed grains	50g	Daily
32	Sparrow Java ( <i>Padda oryzivora</i> )	Mixed grains	10g	Daily
33	Stork Painted	Fish	500g	Daily

	<i>(Mycteria leucocephala)</i>			
34	Swan Black <i>(Cygnus atratus)</i>	Mixed vegetables Poultry feed Raggi Greens Sprouted grams	100g 100g 50g 150g 100g	Daily
35	Teal Lesser Whistling <i>(Dendrocygna javanica)</i>	Wheat Poultry feed Sprouted grams	50g 50g 50g	Daily
<b>Mammals</b>				
1	Bear Sloth <i>(Melursus ursinus)</i>	Rice Milk Coconut Jaggery Fruits Egg Honey	500g 1ltr 1no 250g 2kg 1no 200ml	Daily
2	Black Buck <i>(Antelope cervicapra)</i>	Green leaves Wheat bran Horse gram Salt Mixed vegetables	3kg 300g 250g 2g 200g	Daily
3	Cat Jungle <i>(Felis chaus)</i>	Chicken	200g	Six days a week
4	Cat Leopard <i>(Felis bengalensis)</i>	Chicken	200g	Six days a week
5	Civet Common Palm <i>(Paradoxurus hermaphroditus)</i>	Meat with 30%bone	150g	Six days a week
6	Civet Indian Small <i>(Viverricula indica)</i>	Chicken	150g	Six days a week
7	Deer Mouse <i>(Moschiola indica)</i>	Green leaves Mixed vegetables Green gram Fruits	100g 100g 50g 100g	Daily
8	Dog Wild <i>(Cuon alpines)</i>	Meat with 30%bone	250g	Six days a week
9	Jackal <i>(Canis aureus)</i>	Meat with 30%bone	250g	Six days a week
10	Langur Common <i>(Seminopithecus entellus)</i>	Vegetable Seasonal fruits Ground nuts	200g 100g 50g	Daily
11	Leopard/ Panther <i>(Panthera pardus)</i>	Meat with 30%bone Meat boneless Chicken	1kg 750g 1.250kg	Six days a week
12	Lion Asiatic <i>(Panthera leo persica)</i>	Meat with 30%bone Meat boneless Chicken	6kg 2kg 1kg	Six days a week
13	Macaque Bonnet	Vegetable	200g	Daily

	<i>(Macaca radiata)</i>	Seasonal fruits Ground nuts	100g 50g	
14	Macaque Lion Tailed <i>(Macaca silenus)</i>	Vegetable Seasonal fruits Ground nuts	200g 200g 50g	Daily
15	Macaque Rhesus <i>(Macaca mulatta)</i>	Vegetable Seasonal fruits Ground nuts	200g 100g 50g	Daily
16	Mongoose Indian Grey <i>(Herpestes edwardsii)</i>	Meat with 30%bone Chicken	250g 75g	Six days a week
17	Squirrel Giant <i>(Ratufa indica)</i>	Ground nut Seasonal fruits Mixed vegetables	25g 100g 100g	Daily
18	Tiger Bengal <i>(Panthera tigris tigris)</i>	Meat with 30%bone Meat boneless Chicken	5kg 3kg 1.250kg	Six days a week
19	Deer Barking <i>(Muntiacus muntjak)</i>	Green leaves Wheat bran Horse gram Salt Mixed vegetables	2kg 250g 250g 2g 100g	Daily
20	Deer Sambar <i>(Cervus unicolor)</i>	Green leaves Wheat bran Horse gram Salt Mixed vegetables	4kg 500g 300g 3g 200g	Daily
21	Deer Spotted <i>(Axis axis)</i>	Green leaves Wheat bran Horse gram Salt Mixed vegetables	3kg 300g 250g 2g 200g	Daily
22	Hare Black Naped <i>(Lepus nigricollis)</i>	Green leaves Mixed vegetables	100g 100g	Daily
23	Hippopotamus <i>(Hippopotamus amphibious)</i>	Green leaves Wheat bran Horse gram Salt Mixed vegetables Green gram Bengal gram	100kg 2.5kg 2.5kg 50g 2kg 1kg 1kg	Daily
24	Hyena Striped <i>(Hyaena hyaena)</i>	Meat with 30% bone	4 kg	Six days a week
25	Lion Hybrid <i>(Panthera leo)</i>	Meat with 30%bone Meat boneless	6kg 2kg 1kg	Six days a week



		Chicken		
26	Mongoose Ruddy ( <i>Herpestes smithii</i> )	Meat with 30%bone Chicken	250g 75g	Six days a week
27	Pig Wild ( <i>Sus scrofa</i> )	Mixed vegetables Tubers Horse gram Wheat bran	2kg 500g 100g 100g	Daily
28	Porcupine Indian ( <i>Hystrix indica</i> )	Mixed vegetables Tubers Fruits	500g 500g 200g	Daily
Reptiles				
1	Cobra Indian ( <i>Naja naja</i> )	Rat	1 no.	Twice a week
2	Cobra King ( <i>Ophiophagus hannah</i> )	Snake	1 no.	Twice a week
3	Crocodile Gharial ( <i>Gavialis gangeticus</i> )	Fish	1 kg	Thrice a week
4	Crocodile Marsh ( <i>Crocodylus palustris</i> )	Meat	1 kg	Twice a week
5	Monitor Lizard ( <i>Varanus bengalensis</i> )	Chicken	50 g	Six days a week
6	Python Indian Rock ( <i>Python molurus molurus</i> )	Rat/Chicken	2 no.	Twice a week
7	Python Reticulated ( <i>Malayopython reticulates</i> )	Rat/Chicken	2 no.	Twice a week
8	Keelback Checkered ( <i>Henochropis piscator</i> )	Fish	2no	Twice a week
9	Snake Rat ( <i>Ptyas mucosus</i> )	Mice/Rat	1no.	Twice a week
10	Turtle Giant Soft Shell ( <i>Pelochelys cantorii</i> )	Minced meat Fish	50g 150g	Daily
11	Turtle Indian Black ( <i>Melanochelys trijuga</i> )	Minced meat Fish	25g 25g	Daily
12	Viper Russell's ( <i>Vipera ruselli</i> )	Rat/Mice	1no.	Twice a week
13	Boa Common Sand ( <i>Gongylophis conicus</i> )	Mice	1no.	Twice a week
14	Boa Red Sand ( <i>Eryx johnii</i> )	Mice	1no.	Twice a week
15	Boa Whitaker's ( <i>Eryx whitakeri</i> )	Mice	1no.	Twice a week
16	Caiman Spectacled ( <i>Caiman crocodilus</i> )	Meat	750g	Thrice a week
17	Crocodile Nile ( <i>Crocodylus niloticus</i> )	Meat	1kg	Thrice a week
18	Crocodile Siamensis ( <i>Crocodylus siamensis</i> )	Meat	1kg	Thrice a week

19	Iguana Green ( <i>Iguana iguana</i> )	Vegetables	500 g	Daily
20	Krait Common Indian ( <i>Bungarus caeruleus</i> )	Mice	1 no.	Twice a week
21	Racer Banded ( <i>Argyrogena fasciolata</i> )	Mice	1 no.	Twice a week
22	Snake Bronzeback Tree ( <i>Dendrelaphis tristis</i> )	Lizard	1 no.	Twice a week
23	Snake Ceylon Cat ( <i>Boiga ceylonensis</i> )	Lizard/mice	1 no.	Twice a week
24	Snake Common Wolf ( <i>Lycodon aulicus</i> )	Lizard/mice	1 no.	Twice a week
25	Snake Green Vine ( <i>Ahaeutualla nasuttus</i> )	Mice	1 no.	Twice a week
26	Keelback Striped ( <i>Amphiesma siolata</i> )	Lizard	1 no.	Twice a week
27	Snake Montane Trinket ( <i>Coelognathus helena monticollaris</i> )	Mice	1 no.	Twice a week
28	Terrapin Red Eared ( <i>Trachemys scripta</i> )	Minced meat Fish	25 g 25 g	Daily
29	Turtle Mud or Flap-Shell ( <i>Lissemys punctata</i> )	Minced meat Fish	25 g 25 g	Daily
30	Tortoise Indian Star ( <i>Geochelone elegans</i> )	Mixed vegetables Grass	20 g 10 g	Daily
31	Viper Hump Nosed Pit ( <i>Hypnale hypnale</i> )	Mice	1 no.	Twice a week
32	Viper Malabar Pit ( <i>Trimeresums malbaricus</i> )	Mice	1 no.	Twice a week

### Vaccination Schedule of animals

Sl. No.	Species	Disease vaccinated for	Name of the Vaccine and dosage/quantity used	Periodicity	Remarks
1	Felids	Feline Panleukopenia, Feline Rhinotracheitis, Feline Calcivirus infection & Rabies	Feline panleukopenia + feline rhinotracheitis + feline calci virus trivalent (killed vaccine)+Rabies cell culture (inactivated) 1 ml S/C	Annual	
2	Canids	Canine distemper , Canine adenoviral infection, canine parvo	Canine distemper + canine adenovirus type 2 (CAV-2) + canine parvo	Annual	

		viral infection  Rabies	virus vaccine (attenuated live virus) 1 ml S/C  Rabies cell culture (inactivated) 1 ml S/C	Annual	
3	Ursids	Rabies	Rabies cell culture (inactivated) 1 ml S/C	Annual	
4	Birds	New Castle Disease	Lasota vaccine  Through D/W	Half yearly	
5	Gaur	FMD	Trivalent Raksha Vac 5 ml I/M	Half yearly	

#### De-worming Schedule of animals

Sl. No.	Species	Drug used	Month
1	Anseriformes (ducks and geese)	Fenbendazole – 10mg /kg P/O	3 months interval
2	Galliformes (pheasants)	Fenbendazole – 20mg /kg P/O	3 months interval
3	Ciconiiformes (spoonbill & ibis)	Fenbendazole – 25mg /kg P/O	3 months interval
4	Psittaciformes (parrots & parakeets)	Albendazole – 20 mg/kg P/O	3 months interval
5	Pelican	Fenbendazole – 20mg /kg P/O	3 months interval
6	Columbiformes (pigeons & doves)	Fenbendazole – 20mg /kg P/O	3 months interval
7	Raptors	Fenbendazole – 20mg /kg P/O	3 months interval
8	Ratites	Albendazole – 10 mg/kg P/O	3 months interval
9	Owls	Fenbendazole – 25mg /kg P/O	3 months interval
10	Snakes	Fenbendazole – 25mg /kg P/O	3 months interval
11	Crocodiles and tortoises	Fenbendazole – 50mg /kg P/O	3 months interval
12	Deer and antelopes	Ivermectin – 0.2 mg /kg P/O	3 months interval
13	Porcupine	Fenbendazole – 20mg /kg P/O	3 months interval

14	Squirrels	Fenbendazole – 20mg /kg P/O	3 months interval
15	Small cats	Fenbendazole – 25mg /kg P/O	3 months interval
16	Big cats	Combination of Fenbendazole, praziquantel and pyrantel pamoate	3 months interval
17	Primates	Fenbendazole – 25mg /kg P/O	3 months interval
18	Jackals	Fenbendazole – 50mg /kg P/O	3 months interval
19	Bears	Fenbendazole – 25mg /kg P/O	3 months interval
20	Wild boar	Ivermectin – 0.2 mg /kg P/O	3 months interval
21	Hippopotamus	Ivermectin – 0.2 mg /kg P/O	3 months interval

\*Routine faecal sample examination is done for all zoo collections at 3 months interval for estimation of parasitic load and if found positive, therapeutic drugs at prescribed doses will be included.

### Disinfection Schedule

Sl. No.	Species	Type of enclosure	Disinfectant used and method	Frequency of disinfection
1	All species	Open enclosures, animal houses and walkways	Kohrsolin-Th (gluteraldehyde disinfectant) as spray	1 month
2	All species	Entrance of zoo, animal houses, service gate, zoo hospital & feed storage room	1% potassium permanganate solution as foot dip and wheel dip	Daily
3	All species	Drinking water	Sokrena (didecyl dimethyl ammonium chloride) as water sanitizer	Daily

### Developmental/Maintenance Works

SI. No.	Works	Amount. ( In Lakhs)
1	Construction of Exotic Primate enclosures	46.07
2	Construction of Exotic Birds enclosures	16.03
3	Construction of Indian Grey Wolf enclosures	37.00
4	Maintenance works for the Post-Treatment ward	0.96

### Education and Awareness Programme:

The following education and awareness programmes were conducted by the zoo as a part of its outreach activities to inculcate the general public with ideas of conservation and to develop a sense of guardianship of nature. These programmes were successfully conducted utilising various online and offline platforms reaching a wider audience.

- Earth Day – 22<sup>nd</sup> April
- Bee Day - 20<sup>th</sup> May
- International day of Biological Diversity – 22<sup>nd</sup> May
- World Environment day – 5<sup>th</sup> June
- International Tiger Day – 29<sup>th</sup> July
- Unite for Big Cats- 8<sup>th</sup> August
- Swachhata Hi Seva Campaign - Cleanliness Drive in association with M.R.P.L- 1<sup>ST</sup> October
- Wildlife Week – 2<sup>nd</sup> week of October
- International Zoo Keepers Day – 4<sup>th</sup> October
- Anti- Rabies and FMD Vaccination- 8<sup>th</sup> October
- International day of Forests – 21<sup>st</sup> March



Anti- Rabies Vaccination for dogs

### Animal Adoption/ Donation Details:

Pilikula Biological Park has an animal adoption scheme where general public or institutions can adopt an animal for a specific period of time by paying its maintenance expenses. This amount will be used for the upkeep of the adopted animal like the expense of food, medicine and general maintenance. Certain privileges for the donors are provided as a sign board of donor's detail

SI. No.	Donor	Amount
1	Reliance Foundation.	1.00 Cr

### **Monsoon Preparation:**

During monsoon, June to August rainfall is very high in this region. Hence prior to onset of monsoon, work of cleaning the debris all along the compound wall, cutting of dead and other trees which are posing danger to the moats and compound wall are cleared and proper arrangements are made for the free flow of storm water.

### **Summer Preparation:**

During summer seasons specially March to May, weather of this region is sunny and very hot. Hence dried leaf litter spread into adjoining enclosures are removed so as to avoid fire. Water sprinklers are provided in the display enclosure so as to keep the area cool. The roofs of the enclosures are painted with lime and animal house are provide with fan and proper ventilation.



*Spraying water in animal house*



*Providing fan in animal house*

### **Precaution for Avian Influenza:**

As a part of disease control protocols to prevent the entry of contagious diseases into the captive wild animals are being followed, Providing a large foot dip at each entry so that even the vehicle coming inside the zoo are properly disinfected, foot dips at the entrance of each enclosure, limiting the contact of zoo collection with wild and other migratory birds through proper fencing and isolation of water bodies and disinfecting the visitors pathway are the measures adopted to avoid the entry of



air borne virus. Strict instructions are given to the keepers regarding the maintenance of the sanitation level at the zoo and are advised not to rear any birds at their home. Proper

quarantine of newly arrived collection and appropriate necropsy of the animals that have died are also done routinely.

**Animal acquisition/transfer/exchange:**

A.	Animals arriving in the Zoo			
	Species	Number (M:F)	From	Date of Arrival
	Black Buck – White	2:2:0	Balasaheb Thackeray Gorewada International Zoological Park, Nagpur, Maharashtra.	08.03.2023
	Nilgai	2:2:0		
	Asiatic Lion	0:1	Rajkot Zoological Park, Gujarath	06.04.2024
	Indian Wolf	1:1		
	Jackal	1:1		
	Comb duck	1:1		
	Silver Pheasant	1:1		
	Golden Pheasant	1:0		
	Zebra Finch	4:4		
B	Animals going from the Zoo			
	Species	Number (M:F)	Going to	Date of deposition
	India Grey Mongoose	2:2:0	Balasaheb Thackeray Gorewada International Zoological Park, Nagpur, Maharashtra.	10.03.2023
	Wild Dog/Dhole	2:2	Rajkot Zoological Park, Gujarath	08.04.2024
	Leopard	0:1		
	Palm Civet	1:1		
	Reticulated Python	2:2		
	Russell's Viper	1:1		
	Montane Trinket Snake	2:2		
	Green Vine Snake	1:1		
	Rat Snake	1:1		
	Whitaker's Boa	2:2		



110 Juvenile Checkered Keelback born in Captivity



37 RFO Trainees visited PBP, a session was conducted on illegal wildlife trading.



International Leopard Day was celebrated on 3<sup>rd</sup> May



A cleanliness drive in association with M.R.P.L AND St. Joseph's College



Wildlife Week was celebrated from 2<sup>nd</sup> to 8<sup>th</sup> October. On this occasion, more than 200 students, teachers and the general public were invited to participate in slogans and poster-making. Drawing and photography competitions were conducted.



**Endangered Species\***

**Part-I**

Sl.No.	Animal Name	Scientific Name	Opening Stock 01.04.2023				Births			Acquisitions			Disposals			Deaths			Closing Stock 31.03.2024			
			M	F	U	T	M	F	U	M	F	U	M	F	U	M	F	U	M	F	U	T
<b>Bird</b>																						
1	Eagle White Bellied Sea	<i>Haliaeetus leucogaster</i>	0	0	1	1	0	0	0	0	0	0	0	0	0	0	0	0	0	0	1	1
2	Fowl Jungle Grey	<i>Gallus sonneratii</i>	0	1	0	1	0	0	0	0	0	0	0	1	0	0	0	0	0	0	0	0
3	Peafowl	<i>Pavo cristatus</i>	5	5	0	10	0	0	0	2	2	0	4	3	5	0	0	0	3	4	0	7
4	Peafowl White/Leucustic	<i>Pavo cristatus</i>	2	1	0	3	0	0	0	0	0	0	0	0	0	0	1	0	2	0	0	2
5	Spoonbill White	<i>Platalea leucorodia</i>	2	1	0	3	0	0	0	0	0	0	2	1	0	0	0	0	0	0	0	0
6	Vulture White Scavenger	<i>Neophron percnopterus</i>	0	0	1	1	0	0	0	0	0	0	0	0	0	0	0	0	0	0	1	1
<b>Total Bird</b>			<b>9</b>	<b>8</b>	<b>2</b>	<b>19</b>	<b>0</b>	<b>0</b>	<b>0</b>	<b>2</b>	<b>2</b>	<b>0</b>	<b>6</b>	<b>5</b>	<b>5</b>	<b>0</b>	<b>1</b>	<b>0</b>	<b>5</b>	<b>4</b>	<b>2</b>	<b>11</b>

<b>Mammal</b>																						
7	Bear Sloth	<i>Ursus ursinus</i>	1	1	0	2	0	0	0	0	0	0	0	0	0	0	0	0	1	1	0	2
8	Black Buck	<i>Antilope cervicapra</i>	23	28	0	51	4	3	0	0	0	0	0	0	0	1	0	0	26	31	0	57
9	Black Buck - White	<i>Antilope cervicapra</i>	2	2	0	4	0	0	1	0	0	0	0	0	0	0	0	0	2	2	1	5
10	Cat Jungle	<i>Felis chaus</i>	2	3	0	5	0	0	0	0	0	0	0	0	0	0	0	0	2	3	0	5
11	Cat Leopard	<i>Prionailurus bengalensis</i>	0	2	0	2	0	0	0	0	0	0	0	0	0	0	1	0	0	1	0	1
12	Civet Common Palm	<i>Paradoxurus hermaphroditus</i>	8	7	0	15	0	0	0	0	0	0	3	3	0	0	0	0	5	4	0	9
13	Civet Indian Small	<i>Viverricula indica</i>	2	2	0	4	0	0	0	0	0	0	0	0	0	1	0	0	1	2	0	3
14	Deer Mouse	<i>Moschiola indica</i>	3	3	0	6	0	0	3	0	0	0	0	0	0	0	0	0	3	3	3	9
15	Deer Swamp	<i>Rucervus duvaucelii</i>	2	2	0	4	0	0	0	0	0	0	0	0	0	0	1	0	2	1	0	3

16	Dog Wild/Dhole	<i>Cuon alpinus</i>	9	11	0	20	3	0	0	0	0	0	2	2	0	0	0	0	10	9	0	19
17	Gaur Indian	<i>Bos gaurus</i>	2	4	0	6	0	0	0	0	0	0	0	0	0	0	0	0	2	4	0	6
18	Jackal	<i>Canis aureus</i>	17	17	0	34	2	1	0	1	1	0	0	0	0	0	0	0	20	19	0	39
19	Langur Common	<i>Semnopithecus entellus</i>	2	2	0	4	0	0	0	0	0	0	0	0	0	0	0	0	2	2	0	4
20	Leopard/ Panther	<i>Panthera pardus</i>	1	3	0	4	0	0	0	1	2	0	0	1	0	0	0	0	2	4	0	6
21	Lion Indian	<i>Panthera leo persica</i>	0	1	0	1	0	0	0	0	1	0	0	0	0	0	0	0	0	2	0	2

**Endangered Species\***

**Part-I**

Sl.No.	Animal Name	Scientific Name	Opening Stock 01.04.2023				Births			Acquisitions			Disposals			Deaths			Closing Stock 31.03.2024				
			M	F	U	T	M	F	U	M	F	U	M	F	U	M	F	U	M	F	U	T	
23	Macaque Lion Tailed	<i>Macaca silenus</i>	1	1	0	2	0	0	0	0	0	0	0	0	0	0	0	0	1	1	0	2	
24	Macaque Rhesus	<i>Macaca mulatta</i>	4	4	0	8	0	0	0	1	0	0	0	0	0	0	0	0	5	4	0	9	
25	Mongoose Indian Grey	<i>Herpestes edwardsi</i>	7	9	0	16	0	0	0	0	0	0	3	5	0	0	0	0	4	4	0	8	
26	Squirrel Flying	<i>Petinomys fuscocapillus</i>	0	1	0	1	0	0	0	0	0	0	0	0	0	0	1	0	0	0	0	0	
27	Squirrel Giant Malabar	<i>Ratufa indica</i>	1	2	0	3	0	0	0	0	0	0	0	0	0	1	0	1	1	0	2		
28	Tiger Bengal	<i>Panthera tigris tigris</i>	4	4	0	8	0	0	0	0	0	0	0	0	0	1	0	4	3	0	7		
29	Tiger Bengal - White	<i>Panthera tigris tigris</i>	0	1	0	1	0	0	0	0	0	0	0	0	0	0	0	0	0	1	0	1	
30	Wolf Indian	<i>Canis lupus</i>	0	0	0	0	0	0	0	1	1	0	0	0	0	0	0	1	1	0	2		
<b>Total Mammal</b>			<b>91</b>	<b>110</b>	<b>0</b>	<b>201</b>	<b>9</b>	<b>4</b>	<b>4</b>	<b>4</b>	<b>5</b>	<b>0</b>	<b>8</b>	<b>11</b>	<b>0</b>	<b>2</b>	<b>5</b>	<b>0</b>	<b>94</b>	<b>103</b>	<b>4</b>	<b>201</b>	
<b>Reptile</b>																							
31	Cobra Indian	<i>Naja naja</i>	0	0	18	18	0	0	40	0	0	32	0	0	72	0	0	0	0	0	18	18	
32	Cobra King	<i>Ophiophagus hannah</i>	6	1	4	11	0	0	0	1	0	0	0	0	0	0	0	0	7	1	4	12	
33	Crocodile Gharial	<i>Gavialis gangeticus</i>	0	0	2	2	0	0	0	0	0	0	0	0	0	0	0	0	0	0	2	2	

34	Crocodile Marsh	<i>Crocodylus palustris</i>	1	1	18	20	0	0	0	0	0	0	0	0	0	0	0	0	1	1	18	20
35	Monitor Lizard	<i>Varanus bengalensis</i>	0	0	7	7	0	0	0	0	0	0	0	0	0	0	0	0	0	0	7	7
36	Python Indian Rock	<i>Python molurus molurus</i>	0	0	13	13	0	0	60	0	0	38	0	0	98	0	0	0	0	0	13	13
37	Python Reticulated	<i>Python reticulatus</i>	3	3	20	26	0	0	0	0	0	0	0	0	0	0	0	0	3	3	20	26
38	Snake Keelback Checkered	<i>Xenochrophis piscator</i>	0	0	10	10	0	0	103	0	0	8	0	0	11	0	0	0	0	0	110	110
39	Snake Rat	<i>Ptyas mucosus</i>	0	0	34	34	0	0	86	0	0	35	0	0	121	0	0	0	0	0	34	34
40	Turtle Indian Soft-Shell	<i>Lissemys punctata punctata</i>	0	0	41	41	0	0	0	0	0	0	0	0	0	0	0	0	0	0	41	41
41	Turtle Indian Black	<i>Melanochelys trijuga</i>	0	0	125	125	0	0	3	0	0	2	0	0	5	0	0	0	0	0	125	125
42	Viper Russells	<i>Vipera russellii</i>	0	0	7	7	0	0	40	0	0	16	0	0	56	0	0	0	0	0	7	7
	<b>Total Reptile</b>		<b>10</b>	<b>5</b>	<b>299</b>	<b>314</b>	<b>0</b>	<b>0</b>	<b>332</b>	<b>1</b>	<b>0</b>	<b>131</b>	<b>0</b>	<b>0</b>	<b>363</b>	<b>0</b>	<b>0</b>	<b>0</b>	<b>11</b>	<b>5</b>	<b>399</b>	<b>415</b>
	<b>Total Animals</b>		<b>110</b>	<b>123</b>	<b>301</b>	<b>534</b>	<b>9</b>	<b>4</b>	<b>336</b>	<b>7</b>	<b>7</b>	<b>131</b>	<b>14</b>	<b>16</b>	<b>368</b>	<b>2</b>	<b>6</b>	<b>0</b>	<b>110</b>	<b>112</b>	<b>405</b>	<b>627</b>

#### Others Species

Sl. No	Animal Name	Scientific Name	Opening Stock 01.04.2023				Births			Acquisitions			Disposals			Deaths			Closing Stock 31.03.2024			
			M	F	U	T	M	F	U	M	F	U	M	F	U	M	F	U	T			
<b>Birds</b>																						
1	<b>Budgerigar</b>	<i>Melopsittacus undulates</i>	0	0	52	52	0	0	0	0	0	0	0	0	49	0	0	3	0	0	0	0
2	<b>Cockatiel</b>	<i>Nymphicus hollandicus</i>	3	2	2	7	0	0	0	0	0	0	0	0	0	0	0	0	3	2	2	7
3	<b>Cockatoo Gala</b>	<i>Eolophus roseicapilla</i>	1	1	0	2	0	0	0	0	0	0	0	0	0	0	0	0	1	1	0	2

4	<b>Conure Sun</b>	<i>Aratinga solstitialis</i>	0	1	0	1	0	0	0	0	0	0	0	0	0	0	0	1	0	0	0	0
5	<b>Dove Diamond</b>	<i>Geopelia cuneate</i>	0	0	6	6	0	0	0	0	0	0	0	0	6	0	0	0	0	0	0	0
6	<b>Duck Caroline/Wood</b>	<i>Aix sponsa</i>	1	1	0	2	0	0	0	0	0	0	1	1	0	0	0	0	0	0	0	0
7	<b>Comb Duck</b>	<i>Sarkidiornis sylvicola</i>	0	0	0	0	0	0	0	1	1	0	0	0	0	0	0	0	1	1	0	2
8	<b>Duck Mallard</b>	<i>Anas platyrhynchos</i>	0	0	9	9	0	0	0	0	0	0	0	0	0	0	0	0	0	0	9	9
9	<b>Duck Mandarin</b>	<i>Aix galericulata</i>	1	1	0	2	0	0	0	0	0	0	1	1	0	0	0	0	0	0	0	0
10	<b>Duck Muscovy</b>	<i>Cairina moschata</i>	5	4	0	9	0	0	10	0	0	0	0	0	0	0	0	0	5	4	10	19
11	<b>Egret Large</b>	<i>Ardea alba</i>	3	3	0	6	0	0	0	0	3	0	0	0	0	1	0	0	2	6	0	8
12	<b>Emu</b>	<i>Dromaius novaehollandiae</i>	1	0	0	1	0	0	0	0	0	0	0	0	0	1	0	0	0	0	0	0
13	<b>Finch Zebra</b>	<i>Taeniopygia guttata</i>	0	0	8	8	0	0	0	4	4	0	0	0	0	0	0	5	4	4	3	11
14	<b>Fowl Guinea</b>	<i>Numida meleagris</i>	9	6	0	15	0	0	0	0	0	0	9	6	0	0	0	0	0	0	0	0
15	<b>Fowl Red Jungle</b>	<i>Gallus gallus</i>	18	3	0	21	0	0	0	0	0	0	13	2	0	0	0	0	5	1	0	6
16	<b>Fowl Red Spur</b>	<i>Galloperdix spadicea</i>	1	2	0	3	0	0	0	0	0	0	1	2	0	0	0	0	0	0	0	0
17	<b>Goose</b>	<i>Anser anser</i>	0	0	37	37	0	0	0	0	0	0	0	0	0	0	0	0	0	0	37	37
18	<b>Gull Caspian</b>	<i>Larus cachinnans</i>	0	0	1	1	0	0	0	0	0	0	0	0	0	0	0	1	0	0	0	0
19	<b>Hen White Breasted Water</b>	<i>Amaurornis phoenicurus</i>	1	2	0	3	0	0	0	0	0	0	1	2	0	0	0	0	0	0	0	0
20	<b>Heron Night</b>	<i>Nycticorax nycticorax</i>	5	5	26	36	0	0	0	0	0	0	3	2	20	0	0	0	2	3	6	11

## Other Species

## Part-II

Sl.No	Animal Name	Scientific Name	Opening Stock 01.04.2023				Births			Acquisitions			Disposals			Deaths			Closing Stock 31.03.2024			
			M	F	U	T	M	F	U	M	F	U	M	F	U	M	F	U	M	F	U	T
21	Heron Purple	<i>Ardea purpurea</i>	0	0	2	2	0	0	0	0	0	0	0	0	2	0	0	0	0	0	0	0
22	Ibis White	<i>Threskiornis melanocephala</i>	0	0	17	17	0	0	2	0	0	0	0	0	14	0	0	0	0	0	5	5
23	Lovebird Fischer's	<i>Agapornis fischeri</i>	0	0	2	2	0	0	0	0	0	0	0	0	0	2	0	0	0	0	0	0
24	Lovebird Peach Faced	<i>Agapornis roseicollis</i>	0	0	1	1	0	0	0	0	0	0	0	0	0	1	0	0	0	0	0	0
25	Macaw Blue and Gold	<i>Ara ararouna</i>	2	2	0	4	0	0	0	0	0	0	0	0	0	0	0	0	2	2	0	4
26	Kite Brahminy	<i>Haliastur indus</i>	0	0	9	9	0	0	0	0	0	0	0	0	0	0	0	0	0	0	9	9
27	Kite Pariah/Black	<i>Milvus migrans</i>	0	0	9	9	0	0	0	0	0	0	0	0	7	0	0	0	0	0	2	2
28	Koel	<i>Eudynamys scolopaceus</i>	0	2	0	2	0	0	0	0	0	0	2	0	0	0	0	0	0	0	0	0
29	Ostrich	<i>Struthio camelus</i>	2	1	0	3	0	0	0	0	0	0	0	0	1	0	0	1	1	0	2	
30	Owl Barn	<i>Tyto alba</i>	0	0	9	9	0	0	0	0	0	0	0	3	0	0	2	0	0	4	4	
31	Owl Brown Fish	<i>Bubo zeylonensis</i>	0	0	2	2	0	0	0	0	0	0	0	0	0	0	0	0	0	0	2	2
32	Owl Brown Wood	<i>Strix leptogrammica</i>	0	0	1	1	0	0	0	0	0	1	0	0	0	0	0	0	0	0	2	2
33	Owl Grey Horned	<i>Bubo bengalensis</i>	0	0	1	1	0	0	0	0	0	0	0	0	0	0	0	0	0	0	1	1
34	Owl Scoups	<i>Otus scops</i>	0	0	2	2	0	0	0	0	0	0	0	2	0	0	0	0	0	0	0	0
35	Parakeet Alexandrine	<i>Psittacula eupatria</i>	10	8	8	26	0	0	0	0	1	0	0	0	0	0	0	10	9	8	27	
36	Parakeet Blossom Headed	<i>Psittacula cyanocephala</i>	1	1	2	4	0	0	0	2	0	0	0	0	0	0	2	3	1	0	4	
37	Red Breasted Parakeet	<i>Psittacula alexandri</i>	0	0	0	0	0	0	0	5	2	0	0	0	0	0	0	5	2	0	7	

38	<b>Parakeet Rose Ringed</b>	<i>Psittacula krameri</i>	10	13	5	28	0	0	0	0	0	0	2	0	0	0	0	0	0	10	13	7	30
39	<b>Pelican Spot Billed/Grey</b>	<i>Pelicanus philippenis</i>	1	1	0	2	0	0	0	0	0	0	0	0	0	0	0	0	0	1	1	0	2
40	<b>Pheasant Lady Amherst</b>	<i>Chrysolophus amherstiae</i>	2	2	0	4	0	0	0	0	0	0	0	2	2	0	0	0	0	0	0	0	0

**Other Species**

**Part-II**

S.No.	Animal Name	Scientific Name	Opening Stock 01.04.2023				Births			Acquisitions			Disposals			Deaths			Closing Stock 31.03.2024				
			M	F	U	T	M	F	U	M	F	U	M	F	U	M	F	U	M	F	U	T	
41	<b>Pheasant Red Golden</b>	<i>Chrysolophus pictus</i>	3	1	0	4	0	0	0	1	0	0	4	1	0	0	0	0	0	0	0	0	0
42	<b>Pheasant Ring Necked</b>	<i>Phasianus colchicus</i>	0	1	0	1	0	0	0	0	0	0	0	0	0	0	1	0	0	0	0	0	0
43	<b>Pheasant Silver</b>	<i>Lophura nycthemera</i>	3	1	0	4	0	0	0	1	1	0	2	0	0	0	1	0	2	1	0	3	
44	<b>Pheasant Yellow Golden</b>	<i>Chrysolophus pictus</i>	1	1	0	2	0	0	0	0	0	0	0	1	0	0	0	0	1	0	0	1	
45	<b>Pigeon Blue Rock</b>	<i>Columba livia</i>	0	0	8	8	0	0	0	0	0	1	0	0	8	0	0	0	0	0	0	1	1
46	<b>Pigeon Fantail</b>		0	0	8	8	0	0	0	0	0	0	0	0	6	0	0	0	0	0	2	2	
47		<i>Rhea americana</i>	1	1	0	2	0	0	0	0	0	0	0	0	0	1	0	0	0	1	0	1	
48	<b>Rhea White</b>	<i>Rhea americana</i>	1	1	0	2	0	0	0	0	0	0	0	0	0	0	1	0	1	0	0	1	
49	<b>Sparrow Java</b>	<i>Padda oryzivora</i>	0	0	5	5	0	0	0	0	0	0	0	0	5	0	0	0	0	0	0	0	
50	<b>Stork Painted</b>	<i>Mycteria leucocephala</i>	9	10	4	23	0	0	0	0	0	0	3	3	4	0	0	0	6	7	0	13	
51	<b>Swan Black</b>	<i>Cygnus atratus</i>	1	1	0	2	0	0	0	0	0	0	0	0	0	0	0	0	1	1	0	2	
52	<b>Teal Ringed</b>	<i>Callonetta leucophrys</i>	1	1	0	2	0	0	0	0	0	0	1	1	0	0	0	0	0	0	0	0	
53	<b>Teal Lesser Whistling</b>	<i>Dendrocygna javanica</i>	0	0	9	9	0	0	0	0	0	0	0	0	5	0	0	0	0	0	4	4	
54	<b>Turaco Green</b>	<i>Tauraco persa</i>	1	1	0	2	0	0	0	0	0	0	0	0	0	0	0	0	1	1	0	2	

55	<b>Turaco Violet</b>	<i>Tauraco persa</i>	1	1	0	2	0	0	0	0	0	0	0	0	0	0	0	0	0	1	1	0	2
	<b>Total Bird</b>		99	81	245	425	0	0	12	14	12	4	41	26	131	5	6	13	68	63	114	239	

**Other Species**

S.No.	Animal Name	Scientific Name	Opening Stock 01.04.2023				Births			Acquisitions			Disposals			Deaths			Closing Stock 31.03.2024				
			M	F	U	T	M	F	U	M	F	U	M	F	U	M	F	U	M	F	U	T	
<b>Mammal</b>																							
56	<b>Deer Barking</b>	<i>Muntiacus muntjak</i>	7	14	0	21	1	1	0	0	0	0	0	0	0	0	0	0	0	8	15	0	23
57	<b>Deer Sambar</b>	<i>Cervus unicolor</i>	16	15	0	31	1	3	0	0	0	0	0	0	0	0	0	0	0	17	18	0	35
58	<b>Deer Spotted</b>	<i>Axis axis</i>	14	25	0	39	6	4	0	0	0	0	0	0	0	0	0	0	0	20	29	0	49
59	<b>Hare Black Naped</b>	<i>Lepus nigricollis</i>	1	1	0	2	0	0	0	0	0	0	0	0	0	0	1	0	0	1	0	0	1
60	<b>Hippopotamus</b>	<i>Hippopotamus amphibius</i>	3	1	0	4	1	0	0	0	0	0	0	0	0	0	0	0	0	4	1	0	5
61	<b>Hyena Striped</b>	<i>Hyaena hyaena</i>	1	1	6	8	0	0	2	0	0	0	0	0	0	0	0	0	0	1	1	8	10
62	<b>Lion Hybrid</b>	<i>Panthera leo</i>	0	1	0	1	0	0	0	0	0	0	0	0	0	0	0	0	0	0	1	0	1
63	<b>Mara Patagonian</b>	<i>Dolichotis patagonum</i>	1	0	0	1	0	0	0	0	0	0	0	0	0	0	0	0	0	1	0	0	1
64	<b>Marmoset Common</b>	<i>Callithrix jacchus</i>	2	2	0	4	0	0	0	0	0	0	0	0	0	0	0	0	0	2	2	0	4
65	<b>Mongoose Ruddy</b>	<i>Herpestes smithii</i>	1	1	0	2	0	0	0	0	0	0	1	1	0	0	0	0	0	0	0	0	0
66	<b>Monkey Squirrel</b>	<i>Saimiri sciureus</i>	1	1	0	2	0	0	0	0	0	0	0	0	0	0	0	0	0	1	1	0	2
67	<b>Nilgai</b>	<i>Boselaphus tragocamelus</i>	2	2	0	4	0	0	4	0	0	0	0	0	0	0	0	0	0	2	2	4	8
68	<b>Pig Wild</b>	<i>Sus scrofa</i>	8	16	0	24	0	0	3	0	0	0	0	0	0	0	0	0	0	8	16	3	27
69	<b>Porcupine Indian</b>	<i>Hystrix indica</i>	4	5	0	9	0	0	2	0	0	0	0	0	0	0	0	0	0	4	5	2	11

70	<b>Tamarin Red Handed</b>	<i>Saguinus midas</i>	1	1	0	2	0	0	2	0	0	0	0	0	0	0	0	0	1	1	2	4
	<b>Total Mammal</b>		62	86	6	154	9	8	13	0	0	0	1	1	0	0	1	0	70	92	19	181

**Other Species**

	Animal Name	Scientific Name	Opening Stock 01.04.2023				Births			Acquisitions			Disposals			Deaths			Closing Stock 31.03.2024			
			M	F	U	T	M	F	U	M	F	U	M	F	U	M	F	U	M	F	U	T
<b>Reptile</b>																						
71	<b>Boa Common Sand</b>	<i>Gongylophis conicus</i>	0	0	4	4	0	0	0	0	0	0	0	0	0	0	0	0	0	0	4	4
72	<b>Boa Red Sand</b>	<i>Eryx johnii</i>	0	0	4	4	0	0	0	0	0	0	0	0	0	0	0	0	0	0	4	4
73	<b>Boa Whitaker's</b>	<i>Eryx whitakeri</i>	0	0	12	12	0	0	15	0	0	10	0	0	25	0	0	0	0	0	12	12
74	<b>Caiman Spectacled</b>	<i>Caiman crocodilus</i>	1	1	0	2	0	0	0	0	0	0	0	0	0	0	0	0	1	1	0	2
75	<b>Crocodile Nile</b>	<i>Crocodylus niloticus</i>	0	0	2	2	0	0	0	0	0	0	0	0	0	0	0	0	0	0	2	2
76	<b>Crocodile Siamese</b>	<i>Crocodylus siamensis</i>	0	0	2	2	0	0	0	0	0	0	0	0	0	0	0	0	0	0	2	2
77	<b>Iguana Green</b>	<i>Iguana iguana</i>	2	1	0	3	0	0	0	0	0	0	0	0	0	0	0	2	1	0	3	3
78	<b>Krait Common Indian</b>	<i>Bungarus caeruleus</i>	0	0	6	6	0	0	4	0	0	6	0	0	10	0	0	0	0	0	6	6
79	<b>Racer Banded</b>	<i>Argyrogena fasciolata</i>	0	0	1	1	0	0	0	0	0	0	0	0	1	0	0	0	0	0	0	0
80	<b>Snake Bronzeback Tree</b>	<i>Dendrelaphis tristis</i>	0	0	8	8	0	0	0	0	0	5	0	0	5	0	0	0	0	0	8	8
81	<b>Snake Ceylon Cat</b>	<i>Boiga ceylonensis</i>	0	0	6	6	0	0	0	0	0	1	0	0	1	0	0	0	0	0	6	6
82	<b>Snake Green Vine</b>	<i>Ahaetulla nasuta</i>	0	0	5	5	0	0	6	0	0	7	0	0	13	0	0	0	0	0	5	5
83	<b>Snake Keelback Striped</b>	<i>Amphiesma stolatum</i>	0	0	15	15	0	0	0	0	0	0	0	0	0	0	0	0	0	0	15	15



84	<b>Snake Montane Trinket</b>	<i>Coelognathus helena monticollaris</i>	0	0	5	5	0	0	8	0	0	4	0	0	12	0	0	0	0	0	5	5
85	<b>Terrapin Red Eared</b>	<i>Trachemys scripta</i>	0	0	46	46	0	0	0	0	0	0	0	0	0	0	0	0	0	0	46	46
86	<b>Tortoise Indian Star</b>	<i>Geochelone elegans</i>	0	0	37	37	0	0	0	0	0	0	0	0	0	0	0	9	0	0	28	28
87	<b>Turtle Giant Soft shell</b>	<i>Pelochelys cantorii</i>	1	0	0	1	0	0	0	0	0	0	0	0	0	0	0	0	1	0	0	1
88	<b>Viper Hump Nosed Pit</b>	<i>Hypnale hypnale</i>	0	0	6	6	0	0	2	0	0	3	0	0	5	0	0	0	0	0	6	6
89	<b>Viper Malabar Pit</b>	<i>Trimeresurus malabaricus</i>	0	0	2	2	0	0	0	0	0	0	0	0	0	0	0	0	0	0	2	2
<b>Total Reptile</b>			4	2	161	167	0	0	35	0	0	36	0	0	72	0	0	9	4	2	151	157

**Other Species**

	Animal Name	Scientific Name	Opening Stock 01.04.2023				Births			Acquisitions			Disposals			Deaths			Closing Stock 31.03.2024			
			M	F	U	T	M	F	U	M	F	U	M	F	U	M	F	U	M	F	U	T
<b>Pisces of Western Ghats</b>																						
90	Hunase / Murangi	<i>Lepidocephalus thermalis</i>	0	0	5	5	0	0	0	0	0	0	0	0	0	0	0	0	0	0	5	5
91	Kijan	<i>Puntius filamentosus</i>	0	0	12	12	0	0	0	0	0	0	0	0	0	0	0	0	0	0	12	12
92	Kol kijan	<i>Rasbora daniconius</i>	0	0	8	8	0	0	0	0	0	0	0	0	0	0	0	0	0	0	8	8
93	Kuchhu	<i>Channa striatus</i>	0	0	9	9	0	0	0	0	0	0	0	0	0	0	0	0	0	0	9	9
94	Madanji / Korava	<i>Chenna punctatus</i>	0	0	6	6	0	0	0	0	0	0	0	0	0	0	0	0	0	0	6	6

95	Moogumalli / Kudian	<i>Aplocheilus lineatus</i>	0	0	8	8	0	0	0	0	0	0	0	0	0	0	0	0	0	0	0	8	8
96	Mugudu / Magur	<i>Clarius batrachus</i>	0	0	14	14	0	0	0	0	0	0	0	0	0	0	0	0	0	0	0	14	14
97	Mulvel / Kuri meenu	<i>Labeo nigriscens</i>	0	0	2	2	0	0	0	0	0	0	0	0	0	0	0	0	0	0	0	2	2
	<b>Total Fish</b>		<b>0</b>	<b>0</b>	<b>64</b>	<b>64</b>	<b>0</b>	<b>0</b>	<b>0</b>	<b>0</b>	<b>0</b>	<b>0</b>	<b>0</b>	<b>0</b>	<b>0</b>	<b>0</b>	<b>0</b>	<b>0</b>	<b>0</b>	<b>0</b>	<b>0</b>	<b>64</b>	<b>64</b>
	<b>Total Animals</b>		<b>165</b>	<b>169</b>	<b>476</b>	<b>810</b>	<b>9</b>	<b>8</b>	<b>60</b>	<b>14</b>	<b>12</b>	<b>40</b>	<b>42</b>	<b>27</b>	<b>203</b>	<b>5</b>	<b>7</b>	<b>22</b>	<b>142</b>	<b>157</b>	<b>348</b>	<b>641</b>	



New Born pups of Wild dog in Pilikula Biological Park

**List of free living wild animals within the zoo premises:**

<b>Mammals</b>	<b>Birds</b>	<b>Reptiles</b>
Jungle Cat	Little Cormorant	Indian Cobra
Common Palm Civet	White-necked Stork	Monitor Lizard
Jackal	Pond Heron	Indian Rock Python
Indian Grey Mongoose	Night Heron	Checkered Keelback
Black Naped Hare	Cattle Egret	Rat Snake
Indian Porcupine	Common Pariah Kite	Indian Black Turtle
	Brahminy Kite	Russell's Viper
	Common Peafowl	Whitaker's Boa
	Blue Rock Pigeon	Common Indian Krait
	Roseringed Parakeet	Bronzeback Tree Snake
	Crow-Pheasant	Painted Bronzeback Tree Snake
	Indian Drongo Cuckoo	Common Wolf Snake
	Koel	Green Vine Snake
	Barn Owl	Stripped Keelback Snake
	Whitebreasted Kingfisher	Montane Trinket Snake
	Small Green Bee-Eater	Common Trinket Snake
	Lesser Goldenbacked Woodpecker	
	Large Green Barbet	
	Indian Pitta	
	Golden Oriole	
	Racket-Tailed Drongo	
	Grey or Ashy Drongo	
	White bellied Drongo	
	Indian Myna	

	Tree pie House crow Iora Gold fronted Chloropsis Red whiskered Bulbul Jungle Babbler Paradise Flycatcher Tailor Bird Magpie-Robin Yellowheaded Wagtail Purple Sunbird House Sparrow Blackheaded Munia Spotted Owlet Scops Owl	
--	-------------------------------------------------------------------------------------------------------------------------------------------------------------------------------------------------------------------------------------------------------------------------	--