



PILIKULA BIOLOGICAL PARK

Mangaluru, Karnataka.

Annual Report 2022-23



Tigress 'Rani' with her 5 cubs in Pilikula Biological Park

Contents

Sl.No.	Particulars	Page No.
1.	Director's report	3
2	History of the zoo	4
3	Vision	5
4	Mission	5
5	Objective	6
6	About us	7
7	Organization Chart	9
8	Human Resources	9
9	Capacity Building of Zoo Personnel	10
10	Zoo Advisory Committee	11
11	Statement of income and expenditure of the zoo	11
12	Daily feed schedule of animals	12
12	Vaccination schedule of animals	19
13	De-worming schedule of animals	19
14	Disinfection schedule	20
15	Development works	21
16	Educational and awareness programmes	21
17	Animal Adoption, Donation and Financial Assistance	21
18	Seasonal special arrangements for upkeep of animals	22
19	Precaution for Avian Influenza	23
20	Animal acquisition/transfer/exchange	23
21	Annual inventory of animals	25
22	Mortality of animals	31
23	Compliance with conditions stipulated by the Central Zoo Authority	32
24	List of free living wild animals within the zoo premises	34

DIRECTOR'S REPORT

Pilikula Biological Park, a component of Pilikula Nisarga Dhama is a large zoo located in the outskirts of Mangaluru city. The zoo, along with its sister concerns caters to its visitors, a blend of naturalistic, scientific and cultural experiences. It is one of the prime tourist destinations of coastal Karnataka. The zoo was inaugurated during the year 2001 and opened to the public in the year 2004. It is having an area of 82 hectares of land with more than 120 species of animals with over 1200 individuals in total.

Vision is to develop a zoo of international standards in the Western Ghats region and to promote the conservation of fauna and flora of Western Ghats through education, scientific research, captive breeding and establishment of rescue centre as per the approved master plan. The zoo, run by a registered society is prospering through CSR funds from various companies, contributions from animal lovers and general public and through animal adoption programmes. Developmental works have been carried out to a great extent this year in partnership with Mangalore Refinery and Petrochemicals Limited (MRPL) utilising their CSR funds including the up gradation of hospital complex and other important civil works. We are successful in keeping the expenditure to a minimum as there is no financial assistance from the government for the maintenance of the zoo. Since its inception, Pilikula has been in a strive towards converting entire area to resemble Western Ghats itself which is one among the 34 global biodiversity hotspots. Based upon this vision, the green belt project was initiated. As a part of the project, the vegetation cover of the zoo area comprising predominantly of exotic Acacia plants are being replaced with endemic species of Western Ghats region in phased manner. The first phase of the project has been completed successfully. The second phase is also in progress covering nearly 60 acres.

Pilikula Biological Park can be regarded as a model zoo that can be followed, in providing an animal friendly atmosphere. The zoo uses its vast land area to fulfil the species specific requirements of each animal by providing ample space for them to express their normal behaviour. Thus the simulation of their natural habitat has led not only to a mere physical wellbeing, but also a state of psychological wellbeing as well, implied by their successful reproduction and absence of stereotypic behaviours. The zoo also has a conservation breeding centre of king cobra. We successfully bred King cobra in captivity and released more than 150 King Cobra in their habitat. The zoo also sets an imitable example concerning the day to day activities as it is run by a bare minimum number of staff when compared to other zoos in India which come under 'large zoo' category.

Pilikula Biological Park is a showcase of mini western ghats. Efforts are being made to construct the enclosures resembling their natural habitat and for creating awareness among people in the ex-situ conservation of Western Ghats fauna and flora.



HJ Bhandary
Director

Pilikula Biological Park, Mangalore

History of the zoo:

Pilikula the name derived from the local Tulu language 'Pili' means Tiger and 'Kula' means pond. It is said that in the past years Tigers were extensively found in this locality. The Tigers used to drink water from a huge pond found in the area hence the name "Pilikula". The natural tiger caves still exist in the locality.

Pilikula Biological Park is a major component of Pilikula Nisarga Dhama. Kadri deer park and mini zoo was closed as per the order of Central Zoo Authority and animals from defunct zoo were shifted to Pilikula. Pilikula Biological Park was planned with the valuable guidance of Sri Puspha Kumar IFS (Retd.) the then PCCF of Andhra Pradesh.

Pilikula Biological Park was inaugurated on 12.01.2001 by the Hon'ble Chief Minister of Karnataka. The park has since been recognized by the Central Zoo Authority vide letter No. 23-3/97-CZA(5) dated 12.8.1999 and the layout plan approved by the Central Zoo Authority vide letter No.F.No.23-1/97-CZA(N) dated 4.6.2002. Zoo is run by the Pilikula Nisarga Dhama Society® (Now Pilikula Development Authority). Maintenance of the zoo including development of infrastructure, feeding, health care of the animals are done by the Authority with the help of donation from institutions, corporate sectors and individuals. There is very little contribution from the Government sector. Pilikula Nisarga Dhama Society was established in April 1997. The Society comprised of elected representatives and heads of important public institutions and is presided by the district in-charge minister. The Governing Council comprised of key Officers of various Government departments. The Deputy Commissioner of Dakshina Kannada District is the Chairman of Pilikula Development Authority.



Entrance of Pilikula Biological Park.

Pilikula Nisarga Dhama:

Pilikula Nisarga Dhama (Pilikula) is a major eco-education and tourism development project promoted by the District Administration of Dakshina Kannada in the beautiful city of Mangalore in Karnataka State, India.

Pilikula is an integrated theme park with a wide variety of features; Pilikula has many attractions of cultural and scientific interest. Pilikula extends over an area of 375 acres along the banks of Gurupura River.

Pilikula presently includes a Biological Park, Botanical and Medicinal Gardens, Regional Science Centre, Lake Garden and Boating, Heritage and Artisan Village, Jungle Lodges, Golf Course, Amusement and Water Park.

Pilikula probably the first project of its kind in India, it is inspired by the concept of providing a wholesome experience of the native natural and cultural heritage of the region along with all modern recreational facilities.

It is also an attempt to showcase the rich native heritage and coastal culture of the people of Dakshina Kannada district. In short, Pilikula is one-stop education and recreation destination in India - a must visit place for all visitors to this part of the world.



A view of Pilikula Lake

Vision:

To develop a zoo of international standards in the Western Ghats region mainly for in-situ and ex-situ conservation of Western Ghats species.

Mission:

To promote the conservation of fauna and flora of Western Ghats region through education, scientific research, captive breeding and establishment of rescue centre.

Strategy of the Zoo:

The novel concept of the Pilikula Biological Park is to run a zoo by a registered society with generous financial help from philanthropist, corporate bodies, institutions, general public, grants from government and income generated by the entry fee and rent from other facilities.



Snake house in Pilikula Biological Park

Objective:

- Showcase the rich fauna and flora of the Western Ghats.
- Conservation and breeding of endangered species found in Western Ghats region for display, exchange, breeding loans and rehabilitation to the wild in keeping with the National Policy and guidelines from time to time.
- Promote awareness among the public in general and students in particular on the need to protect and conserve wildlife and its habitat.
- Encourage research and scientific studies useful for zoo and wildlife management.
- To function as a rescue centre for wild animals posing danger to the humans, wild animals entering into human habitation, orphaned and injured animals in this region.
- Recreation for the purpose of providing wholesome, healthy educational activity by utilizing the natural features.

About us:

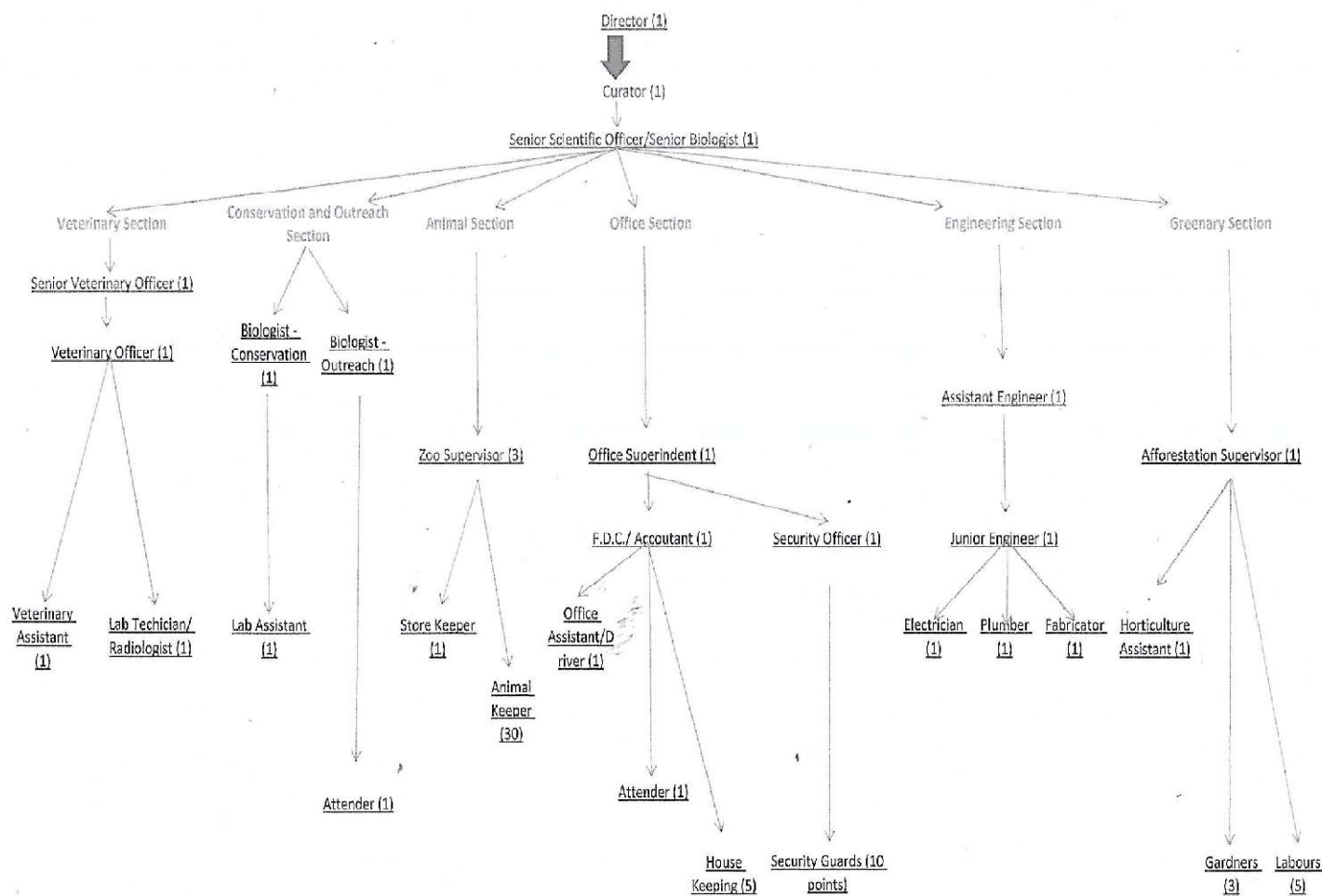
S.No.	Particulars	Information
Basic information about the zoo		
1	Name of the Zoo	Pilikula Biological Park
2	Year of establishment	2001
3	Address of the zoo	Director Pilikula Biological Park Vamanjoor
4	State	Karnataka
5	Telephone number	+91 824 2263300
6	Fax number	+91 824 2263300
7	E-mail address	pilikulazoo@gmail.com
8	Website	www.pilikulazoo.com
9	Distance from nearest	Airport: 15km
		Railway station: 12km
		Bus stand: 12km
10	Recognition valid upto	23.01.2020
11	Category of zoo	Large
12	Area (in hectares)	82
13	Number of visitors 2022-23	Adult: 3,87,202
		Children (school and college): 2,03,965
		Free Entry (NGO,Clubs,Sanga etc): 8,845
		Total Indians: 6,00,012
		Total Foreigners: 112
		Total Visitors: 6,00,124
14	Visitors' facilities available in zoo:	Purified Drinking Water
		First Aid
		E-buggy
		Wheel Chair
		Interlock paved roads
		Hi-Tech Toilets
		Relaxing Places
		Gardens
Cafeterias etc.		

		Children Park
15	Weekly closure day of the zoo	Monday
Management personnel of the zoo		
16	Name and designation of the Office in-charge	H J Bhandary Director
17	Senior Scientific Officer	Jerald Vikram Lobo
18	Veterinary Officer	Dr. Vishnu Deth Vijayakumar
19	Conservation Biologist	Suma M.S
20	Wildlife Biologist	Prasamsha Bhandary
21	Veterinary Assistant	Harish P
Operator of the zoo		
22	Operator	Pilikula Development Authority
23	Address of the operator	Pilikula Development Authority Moodushedde, Mangaluru (D.K.) Karnataka – 575028
24	Phone number	+91 824 2263300
25	E-mail address	pilikulazoo@gmail.com



King Cobra in Pilikula Biological Park

Organization Chart



Human Resources

Manpower of the zoo:

S.No.	Designation	Sanctioned Posts (Nos.)	Names of the incumbent
1	Director	1	H J Bhandary
2	Senior Scientific Officer	1	Jerald Vikram Lobo
3	Veterinary Officer	1	Dr. Vishnu Deth Vijayakumar
4	Conservation Biologist	1	Suma M.S.
5	Wildlife Biologist	1	Prasamsha Bhandary
6	Assistant Engineer	1	Rakesh D.P.
7	Veterinary Assistant	1	Harish P.
8	Supervisor	1	Lingappayya

9	Horticulture Assistant	1	Manoj A
10	Office Assistant	As required	Ranjan
11	Animal Care Takers	As required	Udaya Kumar Devendra Dinesh Kumar Kishore Kumar Jayananada Vikesh Ummer Farooq Narayana Gopalakrishna Santosh Meenakshi Ashoka B Sundara Jaya Gowda Vinith Kumar Harish Baira Surendra

Note: Other required staff are pooled from Pilikula Development Authority.

Capacity Building of Zoo Personnel:

S.No.	Name and Designation of Zoo Personnel	Subject Matter of Training	Period of Training	Name of the Institution where the Training Attended
1	Jerald Vikram Lobo Senior Scientific Officer	Zoo Biologist Workshop	23 rd to 25 th November 2022	Nehru Zoological Park, Hyderabad, Telangana
2	Prasamsha Bhandary Biologist	Workshop for Education Officer	15 th to 17 February 2023	Veeramata Jijabai Bhosale Udyan and Zoo Byculla, Mumbai
3	Jaya Gowda Animal Care Taker	Workshop for Zoo Keepers	27 th February 2023 to 1 st March 2023	Bannerghatta Biological Park, Bangalore
4	Jerald Vikram Lobo Senior Scientific Officer	Zoo Biologist Workshop	21 st to 23 rd March 2023	Greens Zoological, Rescue and Rehabilitation Centre, Jamnagar, Gujarat

Advisory Committee:

Date of constitution: 03.04.2012

President Sri. H.J Bhandary
 Director
 Pilikula Biological Park
 Mangalore

Members Sri Abhishek K.A.S
 Commissioner
 Pilikula Development Authority
 Mangalore

Sri T. Subbaya Shetty
 Shettars Consultants
 Krishna Towers, Ladyhill,
 Mangalore

Sri N.G. Mohan
 Beta Agencies. Kadri,
 Mangalore

Assistant Conservator of Forests
 Mangalore Sub-division
 Mangalore

Mangalore Refinery and Petrochemicals Limited
 Mangalore

Animal Care Trust (R)
 Shaktinagar
 Mangalore

Statement of income and expenditure of the zoo:

Revenue		Expenditure	
Particulars	Amount (in lakhs)	Particulars	Amount (in lakhs)
Gate collection	235.94	Food and fodder	214.21
Rent/lease on shops	16.47	Health care of animals-veterinary	4.33
Adoption of animals/Donations	2.38	Animal Exchange	1.03
Development of Green belt - MRPL	6.93	Salary of staff	67.28
Donations/Development	132.22	Security staff	20.07
		Maintenance of greenery	16.49
		Cleaning staff wages	6.54

		Electricity charges	4.06
		Telephone charges	0.17
		Annual Maintenance	23.03
		Consumable materials	1.30
		Water and Electricity Maintenance	4.80
		Motor vehicle hire charges	5.28
		Developmental works	18.42
		Development of Green belt - MRPL	6.93
	Total	393.94	Total 393.94

Daily feed schedule of animals:

S.No.	Common Name	Feed Item	Quantity	Remarks
Birds				
1	Eagle White Bellied Sea (<i>Haliaeetus leucogaster</i>)	Minced meat	400g	Daily
2	Fowl Grey Jungle (<i>Gallus sonneratii</i>)	Wheat Poultry feed Mixed grains Sprouted grams	50g 50g 25g 50g	Daily
3	Peafowl (<i>Pavo cristatus</i>)	Wheat Poultry feed Mixed grains Sprouted grams	250g 250g 250g 50g	Daily
4	Spoonbill White (<i>Platalea leucorodia</i>)	Fish	400g	Daily
5	Vulture White Scavenger (<i>Neophron percnopterus</i>)	Minced meat	150g	Daily
6	Budgerigar (<i>Melopsittacus undulates</i>)	Mixed grains Mixed vegetables	200g 100g	Daily
7	Cocktail (<i>Nymphicus hollandicus</i>)	Mixed grains	25g	Daily
8	Conure Sun (<i>Aratinga solstitialis</i>)	Mixed grains	25g	Daily
9	Dove Diamond (<i>Geopelia cuneata</i>)	Mixed grains	10g	Daily
10	Duck Caroline/Wood (<i>Aix sponsa</i>)	Wheat Poultry feed Sprouted grams	50g 25g 25g	Daily
11	Duck Mallard (<i>Anas platyrhynchos</i>)	Wheat Sprouted grams	100g 50g	Daily
12	Duck Mandarin (<i>Aix galericulata</i>)	Wheat Poultry feed Sprouted grams	50g 25g 25g	Daily

13	Duck Muscovy (<i>Cairina moschata</i>)	Wheat Poultry feed Sprouted grams	25g 25g 50g	Daily
14	Emu (<i>Dromaius novaehollandiae</i>)	Poultry feed Mixed vegetables Sprouted grams	1kg 250g 100g	Daily
15	Finch Zebra (<i>Taeniopygia guttata</i>)	Mixed grains	10g	Daily
16	Fowl Gunea (<i>Numida meleagris</i>)	Wheat Poultry feed Mixed grains Sprouted grams	60g 60g 40g 40g	Daily
17	Fowl Red Jungle (<i>Gallus gallus</i>)	Wheat Poultry feed Mixed grains Sprouted grams	50g 50g 25g 25g	Daily
18	Fowl Red Spur (<i>Galloperdix spadicea</i>)	Wheat Poultry feed Mixed vegetables Sprouted grams	50g 50g 25g 25g	Daily
19	Goose (<i>Anser anser</i>)	Wheat Poultry feed Sprouted grams	200g 200g 100g	Daily
20	Gull Capian (<i>Larus cachinnans</i>)	Fish	250g	Daily
21	Hen White Breasted Water (<i>Amaurornis phoenicurus</i>)	Wheat Poultry feed Mixed grains	10g 10g 10g	Daily
22	Night Heron (<i>Nycticorax nycticorax</i>)	Fish	100g	Daily
23	Purple Heron (<i>Ardea purpurea</i>)	Fish	100g	Daily
24	Ibis White (<i>Threskiornis melanocephala</i>)	Fish	300g	Daily
25	Lovebird Peach Faced (<i>Agapornis roseicollis</i>)	Mixed grains	10g	Daily
26	Kite Brahminy (<i>Haliastur Indus</i>)	Minced meat	100g	Daily
27	Kite Pariah/Black (<i>Milvus migrans</i>)	Minced meat	100g	Daily
28	Koel (<i>Eudynamis scolopaceus</i>)	Poultry feed Fruits	20g 100g	Daily
29	Ostrich (<i>Struthio camelus</i>)	Wheat Poultry feed Mixed vegetables Sprouted grams	5kg 7kg 200g 5kg	Daily
30	Owl Barn (<i>Tyto alba</i>)	Minced meat	75g	Daily

31	Owl Brown Fish (<i>Bubo zeylonensis</i>)	Minced meat	75g	Daily
32	Owl Brown Wood (<i>strix leptogrammica</i>)	Minced meat	75g	Daily
33	Owl Grey Horned (<i>Bubo bengalensis</i>)	Minced meat	75g	Daily
34	Owl Scoups (<i>Otus scops</i>)	Minced meat	25g	Daily
35	Parakeet Alexandrine (<i>Psittacula eupatria</i>)	Mixed grains Mixed vegetables Sprouted grams Fruits	10g 5g 10g 15g	Daily
36	Parakeet Blossom Headed (<i>Psittacula cyanocephala</i>)	Mixed grains Mixed vegetables Sprouted grams Fruits	5g 5g 5g 15g	Daily
37	Parakeet Rose Ringed (<i>Psittacula krameri</i>)	Mixed grains Mixed vegetables Sprouted grams Fruits	5g 5g 5g 15g	Daily
38	Parrot African Grey (<i>Psittacus erithacus</i>)	Mixed grains Mixed vegetables Sprouted grams Fruits	10g 10g 10g 20g	Daily
39	Pheasant Lady Amherst (<i>Chrysolophus amherstiae</i>)	Wheat Poultry feed Sprouted grams	50g 50g 25g	Daily
40	Pheasant Red Golden (<i>Chrysolophus pictus</i>)	Wheat Poultry feed Sprouted grams	50g 50g 25g	Daily
41	Pheasant Ring Necked (<i>Phasianus nycthemera</i>)	Wheat Poultry feed Sprouted grams	50g 50g 25g	Daily
42	Pheasant Silver (<i>Lophura nycthemera</i>)	Wheat Poultry feed Sprouted grams	50g 50g 25g	Daily
43	Pheasant Yellow Golden (<i>Chrysolophus pictus</i>)	Wheat Poultry feed Sprouted grams	50g 50g 25g	Daily
44	Pigeon Blue Rock (<i>Columba livia</i>)	Mixed grains	50g	Daily
45	Pigeon Fantail	Mixed grains	50g	Daily
46	Sparrow Java (<i>Padda oryzivora</i>)	Mixed grains	10g	Daily
47	Stork Painted (<i>Mycteria leucocephala</i>)	Fish	500g	Daily

48	Swan Black (<i>Cygnus atratus</i>)	Mixed vegetables Poultry feed Raggi Greens Sprouted grams	100g 100g 50g 150g 100g	Daily
49	Teal Ringed (<i>Callonetta leucophrys</i>)	Wheat Poultry feed Sprouted grams	50g 50g 50g	Daily
50	Teal Lesser Whistling (<i>Dendrocygna javanica</i>)	Wheat Poultry feed Sprouted grams	50g 50g 50g	Daily
Mammals				
1	Bear Sloth (<i>Meluesus ursinus</i>)	Rice Milk Coconut Jaggery Fruits Egg Honey	500g 1ltr 1no 250g 2kg 1no 200ml	Daily
2	Black Buck (<i>Antilope cervicapra</i>)	Green leaves Wheat bran Horse gram Salt Mixed vegetables	3kg 300g 250g 2g 200g	Daily
3	Cat Jungle (<i>Felis chaus</i>)	Chicken	200g	Six days a week
4	Cat Leopard (<i>Felis bengalensis</i>)	Chicken	200g	Six days a week
5	Civet Common Palm (<i>Paradoxurus hermaphrodites</i>)	Meat with 30%bone	150g	Six days a week
6	Civet Indian Small (<i>Viverricula indica</i>)	Chicken	150g	Six days a week
7	Deer Mouse (<i>Moschiola indica</i>)	Green leaves Mixed vegetables Green gram Fruits	100g 100g 50g 100g	Daily
8	Dog Wild (<i>Cuon alpines</i>)	Meat with 30%bone	250g	Six days a week
9	Jackal (<i>Canis aureus</i>)	Meat with 30%bone	250g	Six days a week
10	Langur Common (<i>Presbytis entellus</i>)	Vegetable Seasonal fruits Ground nuts	200g 100g 50g	Daily
11	Leopard/ Panther (<i>Panthera pardus</i>)	Meat with 30%bone Meat boneless Chicken	1kg 750g 1.250kg	Six days a week

12	Lion Asiatic (<i>Panthera leo persica</i>)	Meat with 30%bone Meat boneless Chicken	6kg 2kg 1kg	Six days a week
13	Loris Slender (<i>Loris lydekkerianus</i>)	Insects Fruits	2no. 20g	Daily
14	Macaque Bonnet (<i>Macaca radiate</i>)	Vegetable Seasonal fruits Ground nuts	200g 100g 50g	Daily
15	Macaque Lion Tailed (<i>Macaca silenus</i>)	Vegetable Seasonal fruits Ground nuts	200g 200g 50g	Daily
16	Macaque Rhesus (<i>Macaca mulatta</i>)	Vegetable Seasonal fruits Ground nuts	200g 100g 50g	Daily
17	Mongoose Indian Grey (<i>Herpestes edwardsi</i>)	Meat with 30%bone Chicken	250g 75g	Six days a week
18	Squirrel Flying (<i>Petinomys fuscicapillus</i>)	Ground nut Seasonal fruits Mixed vegetables	5g 50g 50g	Daily
19	Squirrel Giant (<i>Ratufa indica</i>)	Ground nut Seasonal fruits Mixed vegetables	25g 100g 100g	Daily
20	Tiger Bengal (<i>Panthera tigris tigris</i>)	Meat with 30%bone Meat boneless Chicken	5kg 3kg 1.250kg	Six days a week
21	Deer Barking (<i>Muntiacus muntjak</i>)	Green leaves Wheat bran Horse gram Salt Mixed vegetables	2kg 250g 250g 2g 100g	Daily
22	Deer Sambar (<i>Cervus unicolor</i>)	Green leaves Wheat bran Horse gram Salt Mixed vegetables	4kg 500g 300g 3g 200g	Daily
23	Deer Spotted (<i>Axis axis</i>)	Green leaves Wheat bran Horse gram Salt Mixed vegetables	3kg 300g 250g 2g 200g	Daily
24	Hare Black Naped (<i>Lepus nigricollis</i>)	Green leaves Mixed vegetables	100g 100g	Daily

25	Hippopotamus (<i>Hippopotamus amphibious</i>)	Green leaves Wheat bran Horse gram Salt Mixed vegetables Green gram Bengal gram	100kg 2.5kg 2.5kg 50g 2kg 1kg 1kg	Daily
26	Hyena Striped (<i>Hyaena hyaena</i>)	Meat with 30% bone	4 kg	Six days a week
27	Lion Hybrid (<i>Panthera leo</i>)	Meat with 30%bone Meat boneless Chicken	6kg 2kg 1kg	Six days a week
28	Mongoose Ruddy (<i>Herpestes smithii</i>)	Meat with 30%bone Chicken	250g 75g	Six days a week
29	Pig Wild (<i>Sus scrofa</i>)	Mixed vegetables Tubers Horse gram Wheat bran	2kg 500g 100g 100g	Daily
30	Porcupine Indian (<i>Hysreix indica</i>)	Mixed vegetables Tubers Fruits	500g 500g 200g	Daily
Reptiles				
1	Cobra Indian (<i>Naja naja</i>)	Rat	1no.	Twice a week
2	Cobra King (<i>Ophiophagus hanna</i>)	Snake	1 no.	Twice a week
3	Crocodile Gharial (<i>Gavialis gangeticus</i>)	Fish	1kg	Thrice a week
4	Crocodile Marsh (<i>Crocodylus palustris</i>)	Meat	1kg	Twice a week
5	Monitor Lizard (<i>Varanus bengalensis</i>)	Chicken	50g	Six days a week
6	Python Indian Rock (<i>Python molurus molurus</i>)	Rat/Chicken	2no.	Twice a week
7	Python Reticulated (<i>Python reticulates</i>)	Rat/Chicken	2 no.	Twice a week
8	Keelback Checkered (<i>Henochropis piscator</i>)	Fish	2no	Twice a week
9	Snake Rat (<i>Ptyas mucosus</i>)	Mice/Rat	1no.	Twice a week
10	Turtle Giant Soft Shell (<i>Pelochelys cantorii</i>)	Minced meat Fish	50g 150g	Daily
11	Turtle Indian Black (<i>Melanochelys trisuga</i>)	Minced meat Fish	25g 25g	Daily

12	Viper Russells (<i>Vipera russelli</i>)	Rat/Mice	1no.	Twice a week
13	Boa Common Sand (<i>Gongylophis conicus</i>)	Mice	1no.	Twice a week
14	Boa Red Sand (<i>Eryx johnii</i>)	Mice	1no.	Twice a week
15	Boa Whitaker's (<i>Eryx whitakeri</i>)	Mice	1no.	Twice a week
16	Caiman Spectacled (<i>Caiman crocodiles</i>)	Meat	750g	Thrice a week
17	Crocodile African Dwarf (<i>Orsterlaemess tetraspis</i>)	Meat	750g	Thrice a week
18	Crocodile Nile (<i>Crocodylus niloticus</i>)	Meat	1kg	Thrice a week
19	Crocodile Siamensis (<i>Crocodylus siamensis</i>)	Meat	1kg	Thrice a week
20	Iguana Green (<i>Iguana iguana</i>)			
21	Krait Common Indian (<i>Bungarus caeruleus</i>)	Mice	1 no.	Twice a week
22	Racer Banded (<i>Argyrogena fasciolata</i>)	Mice	1 no.	Twice a week
23	Snake Bronzeback Tree (<i>Deudrelaphis tristis</i>)	Lizard	1 no.	Twice a week
24	Snake Ceylon Cat (<i>Boiga ceylonensis</i>)	Lizard/mice	1 no.	Twice a week
25	Snake Common Wolf (<i>Lycodon aulicus</i>)	Lizard/mice	1 no.	Twice a week
26	Snake Green Vine (<i>Ahaetualla nasuttus</i>)	Mice	1 no.	Twice a week
27	Keelback Striped (<i>Amphiesma siolata</i>)	Lizard	1 no.	Twice a week
28	Snake Montane Trinket (<i>Coelognathus helena monticollaris</i>)	Mice	1 no.	Twice a week
29	Terrapin Red Eared (<i>Trachemys scripta</i>)	Minced meat Fish	25g 25g	Daily
30	Turtle Mud or Flap-Shell (<i>Lissemys punctata</i>)	Minced meat Fish	25g 25g	Daily
31	Tortoise Indian Star (<i>Geochelone elegans</i>)	Mixed vegetables Grass	20g 10g	Daily
32	Viper Hump Nosed Pit (<i>Hypnale hypnale</i>)	Mice	1 no.	Twice a week
33	Viper Malabar Pit (<i>Trimeresums malbaricus</i>)	Mice	1 no.	Twice a week

Vaccination Schedule of animals

Sl.No.	Species	Disease vaccinated for	Name of the Vaccine and dosage/ quantity used	Periodicity	Remarks
1	Felids	Feline Panleukopenia, Feline Rhinotracheitis, Feline Calcivirus infection & Rabies	Feline panleukopenia + feline rhinotracheitis + feline calici virus trivalent (killed vaccine)+Rabies cell culture (inactivated) 1 ml S/C	Annual	
2	Canids	Canine distemper , Canine adenoviral infection, canine parvo viral infection Rabies	Canine distemper + canine adenovirus type 2 (CAV-2) + canine parvo virus vaccine (attenuated live virus) 1 ml S/C Rabies cell culture (inactivated) 1 ml S/C	Annual Annual	
3	Ursids	Rabies	Rabies cell culture (inactivated) 1 ml S/C	Annual	
4	Birds	New Castle Disease	Lasota vaccine Through D/W	Half yearly	
5	Gaur	FMD	Trivalent Raksha Vac 5 ml I/M	Half yearly	

De-worming Schedule of animals

Sl.No.	Species	Drug used	Month
1	Anseriformes (ducks and geese)	Fenbendazole – 10mg /kg P/O	3 months interval
2	Galliformes (pheasants)	Fenbendazole – 20mg /kg P/O	3 months interval

3	Ciconiiformes (spoonbill & ibis)	Fenbendazole – 25mg /kg P/O	3 months interval
4	Psittaciformes (parrots & parakeets)	Albendazole – 20 mg/kg P/O	3 months interval
5	Pelican	Fenbendazole – 20mg /kg P/O	3 months interval
6	Columbiformes (pigeons & doves)	Fenbendazole – 20mg /kg P/O	3 months interval
7	Raptors	Fenbendazole – 20mg /kg P/O	3 months interval
8	Ratites	Albendazole – 10 mg/kg P/O	3 months interval
9	Owls	Fenbendazole – 25mg /kg P/O	3 months interval
10	Snakes	Fenbendazole – 25mg /kg P/O	3 months interval
11	Crocodiles and tortoises	Fenbendazole – 50mg /kg P/O	3 months interval
12	Deers and antelopes	Ivermectin – 0.2 mg /kg P/O	3 months interval
13	Porcupine	Fenbendazole – 20mg /kg P/O	3 months interval
14	Squirrels	Fenbendazole – 20mg /kg P/O	3 months interval
15	Small cats	Fenbendazole – 25mg /kg P/O	3 months interval
16	Big cats	Combination of Fenbendazole, praziquantel and pyrantel pamoate	3 months interval
17	Primates	Fenbendazole – 25mg /kg P/O	3 months interval
18	Jackals	Fenbendazole – 50mg /kg P/O	3 months interval
19	Bears	Fenbendazole – 25mg /kg P/O	3 months interval
20	Wild boar	Ivermectin – 0.2 mg /kg P/O	3 months interval
21	Hippopotamus	Ivermectin – 0.2 mg /kg P/O	3 months interval

*Routine faecal sample examination is done for all zoo collections at 3 months interval for estimation of parasitic load and if found positive, therapeutic drugs at prescribed doses will be included.

Disinfection Schedule

Sl.No.	Species	Type of enclosure	Disinfectant used and method	Frequency of disinfection
1	All species	Open enclosures, animal houses and walkways	Kohrsolin- Th (gluteraldehyde	1 month

			disinfectant) as spray	
2	All species	Entrance of zoo, animal houses, service gate, zoo hospital & feed storage room	1% potassium permanganate solution as foot dip and wheel dip	Daily
3	All species	Drinking water	Sokrena (didecyl dimethyl ammonium chloride) as water sanitizer	Daily

Developmental/Maintenance Works

S.No.	Works	Amount.
1	Re-construction of Sambar Deer enclosure wall	92,825
2	Re-construction of Indian Gaur wall	22,223
3	Repair and replacing chain link mesh of Black Kite enclosure.	1,25,494
4	Maintenance of animal information and sponsorship sign boards for each animal enclosures.	3,51,254
5	Providing new service road & culvert with feeding platform to Herbivores animal enclosure.	1,20,281
6	Providing breeding facility to King Cobra.	7,33,239
7	Re-aligning and providing cement mortar pointing to laterite masonry in visitors path of aviary.	89,976
8	Construction of Base structure to Sambar Deer enclosure for strengthening of Chain Link Fencing	3,06,589

Education and Awareness Programme:

The following education and awareness programmes were conducted by the zoo as a part of its outreach activities to inculcate the general public with ideas of conservation and to develop a sense of guardianship of nature. These programmes were successfully conducted utilising various online and offline platforms reaching a wider audience.

- Earth Day – 22nd April
- Bee Day - 20th May
- International day of Biological Diversity – 22nd May
- World Environment day – 5th June

- International Tiger Day – 29th July
- Wildlife Week – 2nd week of October
- International day of Forests – 21st March

Animal Adoption/ Donation Details:

Pilikula Biological Park has an animal adoption scheme where general public or institutions can adopt an animal for a specific period of time by paying its maintenance expenses. This amount will be used for the upkeep of the adopted animal like the expense of food, medicine and general maintenance. Certain privileges for the donors are provided as a sign board of donors detail

S.No.	Donor	Amount
1	Smt. Seema Pratapsingh Thorat, Bantwal Taluk, D.K.	44,000/-
2	Dr. Ashmitha Shetty, California.	5,000/-

Monsoon Preparation:

During monsoon, June to August rainfall is very high in this region. Hence prior to onset of monsoon, work of cleaning the debris all along the compound wall, cutting of dead and other trees which are posing danger to the moats and compound wall are cleared and proper arrangements are made for the free flow of storm water.

Summer Preparation:

During summer seasons specially March to May, weather of this region is sunny and very hot. Hence dried leaf litter spread into adjoining enclosures are removed so as to avoid fire. Water sprinklers are provided in the display enclosure so as to keep the area cool. The roofs of the enclosures are painted with lime and animal house are provide with fan and proper ventilation.



Spraying water in animal house



Providing fan in animal house



Painting lime to roof of animal house.

Precaution for Avian Influenza:

As a part of disease control stringent protocols to prevent the entry of such diseases into the zoo are being followed. Providing a large foot dip at each entry so that even the vehicle coming inside the zoo are properly disinfected, foot dips at the entrance of each enclosure, limiting the contact of zoo collection with wild and other migratory birds through proper fencing and isolation of water bodies and disinfecting the visitors pathway are the measures adopted to avoid the entry of virus. Strict instructions are



given to the keepers regarding the maintenance of the sanitation level at the zoo and are also advised not to rear any birds at their home. Proper quarantine of newly arrived collection and appropriate necropsy of the animals that have died are also done.

Animal acquisition/transfer/exchange:

A.	Animals arriving in the Zoo			
	Species	Number (M:F)	From	Date of Arrival
	Black Buck – White	2:2:0	Balasaheb Thackeray Gorewada International Zoological Park, Nagpur, Maharashtra.	08.03.2023
	Nilgai	2:2:0		
	Cat Leopard	1:0:0	Tiger and Lion Safari, Shimogga.	21.04.2022
	Tiger	0:1:0	Arignar Anna Zoological Park, Vandalur, Chennai.	01.05.2022
	Ostrich	0:1:0		
	Owl Grey Horned	0:0:1	People for Animals, Bangalore.	08.09.2022
	Parakeet Alexandrine	0:0:7		
	Parakeet Rose Ringed	0:0:12		
	Macaque Rhesus	1:0:0		
	Cockatoo Gala	1:1:0	Paradise Aviaries, Bangalore	17.12.2022
	Macaw Blue and Gold	2:2:0		
	Turaco Green	1:1:0		
	Turaco Violet	1:1:0		
	Mara Patagonian	1:0:0		
	Marmoset Common	2:2:0		
	Monkey	1:1:0		

	Squirrel			
	Tamarin Red Handed	1:1:0		
B	Animals going from the Zoo			
	Species	Number (M:F)	Going to	Date of deposition
	Bengal Tiger	1:0:0	Arignar Anna Zoological Park, Vandalur, Chennai.	03.05.2022
	Wild Dog	2:2:0		
	Whitaker's Boa	1:1:0		
	Checkered Keelback Snake	2:2:0		
	Bengal Tiger	2:0:0		
	Leopard	2:0:0		
	Dhole	2:2:0		
	Peafowl	1:1:0		
	King Cobra	1:1:0		
	Indian Cobra	3:6:0		
	Russell's Viper	2:2:0		
	Common Wolf Snake	1:1:0		
	Checkered Keelback Snake	2:2:0		
	Rat Snake	3:6:0		
	Montane Trinket Snake	1:1:0		
	Marsh Crocodile	2:4:0	Balasaheb Thackeray Gorewada International Zoological Park, Nagpur, Maharashtra.	10.03.2023
	India Grey Mongoose	2:2:0		
	Reticulated Python	3:3:0		



Dhole pups



Visit by school children

Annual Inventory of Animals:

Endangered Species*

Part-I

S.No.	Animal Name	Scientific Name	Opening Stock 01.04.2022				Births			Acquisitions			Disposals			Deaths			Closing Stock 31.03.2023			
			M	F	U	T	M	F	U	M	F	U	M	F	U	M	F	U	M	F	U	T
Bird																						
1	Eagle White Bellied Sea	<i>Haliaeetus leucogaster</i>	0	0	1	1	0	0	0	0	0	0	0	0	0	0	0	0	0	0	1	1
2	Fowl Jungle Grey	<i>Gallus sonneratii</i>	0	1	0	1	0	0	0	0	0	0	0	0	0	0	1	0	0	0	0	0
3	Peafowl	<i>Pavo cristatus</i>	5	3	0	8	4	6	0	3	1	0	7	5	0	0	0	0	5	5	0	10
4	Peafowl White/Leucustic	<i>Pavo cristatus</i>	2	2	0	4	0	0	0	0	0	0	0	0	0	0	1	0	2	1	0	3
5	Spoonbill White	<i>Platalea leucorodia</i>	2	1	0	3	0	0	0	0	0	0	0	0	0	0	0	0	2	1	0	3
6	Vulture White Scavenger	<i>Neophron percnopterus</i>	0	0	1	1	0	0	0	0	0	0	0	0	0	0	0	0	0	0	1	1
Total Bird			9	7	2	18	4	6	0	3	1	0	7	5	0	0	2	0	9	7	2	18

Mammal																						
7	Bear Sloth	<i>Ursus ursinus</i>	1	1	0	2	0	0	0	0	0	0	0	0	0	0	0	0	1	1	0	2
8	Black Buck	<i>Antilope cervicapra</i>	22	26	0	48	1	2	0	0	0	0	0	0	0	0	0	23	28	0	51	
9	Black Buck - White	<i>Antilope cervicapra</i>	0	0	0	0	0	0	0	2	2	0	0	0	0	0	0	2	2	0	4	
10	Cat Jungle	<i>Felis chaus</i>	2	3	0	5	0	0	0	0	0	0	0	0	0	0	0	2	3	0	5	
11	Cat Leopard	<i>Prionailurus bengalensis</i>	0	2	0	2	0	0	0	1	0	0	0	0	0	1	0	0	0	2	0	2
12	Civet Common Palm	<i>Paradoxurus hermaphroditus</i>	7	7	0	14	4	2	0	2	1	0	5	3	0	0	0	8	7	0	15	
13	Civet Indian Small	<i>Viverricula indica</i>	2	2	0	4	0	0	0	0	0	0	0	0	0	0	0	2	2	0	4	
14	Deer Mouse	<i>Moschiola indica</i>	3	3	0	6	0	0	0	0	0	0	0	0	0	0	0	3	3	0	6	
15	Deer Swamp	<i>Rucervus duvaucelii</i>	2	1	0	3	0	1	0	0	0	0	0	0	0	0	0	2	2	0	4	
16	Dog Wild/Dhole	<i>Cuon alpinus</i>	13	15	0	28	0	0	0	0	0	0	4	4	0	0	0	9	11	0	20	
17	Gaur Indian	<i>Bos gaurus</i>	3	3	0	6	0	1	0	0	0	0	0	0	0	1	0	2	4	0	6	
18	Jackal	<i>Canis aureus</i>	15	16	0	31	2	1	0	0	0	0	0	0	0	0	0	17	17	0	34	
19	Langur Common	<i>Semnopithecus entellus</i>	2	2	0	4	0	0	0	0	0	0	0	0	0	0	0	2	2	0	4	
20	Leopard/ Panther	<i>Panthera pardus</i>	3	4	0	7	0	0	0	0	0	2	0	0	0	1	0	1	3	0	4	
21	Lion Indian	<i>Panthera leo persica</i>	0	1	0	1	0	0	0	0	0	0	0	0	0	0	0	0	1	0	1	
22	Macaque Bonnet	<i>Macaca radiata</i>	3	2	0	5	0	0	0	0	0	0	0	0	0	0	0	3	2	0	5	

23	Macaque Lion Tailed	<i>Macaca silenus</i>	1	1	0	2	0	0	0	0	0	0	0	0	0	0	0	0	1	1	0	2
24	Macaque Rhesus	<i>Macaca mulatta</i>	4	4	0	8	0	0	0	1	0	0	0	0	1	0	0	4	4	0	8	
25	Mongoose Indian Grey	<i>Herpestes edwardsi</i>	10	8	0	18	2	6	0	0	0	5	5	0	0	0	7	9	0	16		
26	Squirrel Flying	<i>Petinomys fuscocapillus</i>	1	1	0	2	0	0	0	0	0	0	0	1	0	0	0	1	0	1		
27	Squirrel Giant Malabar	<i>Ratufa indica</i>	1	2	0	3	0	0	0	0	0	0	0	0	0	0	1	2	0	3		
28	Tiger Bengal	<i>Panthera tigris tigris</i>	7	5	0	12	0	0	0	0	0	3	0	0	0	1	0	4	4	0	8	
29	Tiger Bengal - White	<i>Panthera tigris tigris</i>	0	0	0	0	0	0	0	1	0	0	0	0	0	0	0	1	0	1		
	Total Mammal		102	109	0	211	9	13	0	6	4	0	19	12	0	4	2	0	94	112	0	206
	Reptile																					
30	Cobra Indian	<i>Naja naja</i>	0	0	18	18	0	0	42	0	0	36	0	0	78	0	0	0	0	18	18	
31	Cobra Indian Melenstic	<i>Naja naja</i>	0	0	1	1	0	0	0	0	0	0	0	0	1	0	0	0	0	0	0	
32	Cobra King	<i>Ophiophagus hannah</i>	7	2	7	16	0	0	19	0	0	1	1	22	0	0	0	6	1	4	11	
33	Crocodile Gharial	<i>Gavialis gangeticus</i>	0	0	3	3	0	0	0	0	0	0	0	0	1	0	0	0	0	2	2	
34	Crocodile Marsh	<i>Crocodylus palustris</i>	1	1	24	26	0	0	0	0	0	2	4	0	0	0	1	1	18	20		
35	Monitor Lizard	<i>Varanus bengalensis</i>	0	0	7	7	0	0	0	0	0	0	0	0	0	0	0	0	7	7		
36	Python Indian Rock	<i>Python molurus molurus</i>	0	0	13	13	0	0	86	0	0	28	0	0	114	0	0	0	0	13	13	
37	Python Reticulated	<i>Python reticulatus</i>	3	3	17	23	0	0	9	0	0	3	3	0	0	0	3	3	20	26		
38	Snake Keelback Checkered	<i>Xenochrophis piscator</i>	0	0	10	10	0	0	67	0	0	4	0	0	71	0	0	0	0	10	10	
39	Snake Rat	<i>Ptyas mucosus</i>	0	0	34	34	0	0	91	0	0	32	0	0	123	0	0	0	0	34	34	
40	Turtle Indian Soft-Shelled	<i>Lissemys punctata punctata</i>	0	0	35	35	0	0	6	0	0	0	0	0	0	0	0	0	0	41	41	
41	Turtle Indian Black	<i>Melanochelys trijuga</i>	0	0	124	124	0	0	8	0	0	3	0	0	10	0	0	0	0	125	125	
42	Viper Russells	<i>Vipera russellii</i>	0	0	7	7	0	0	44	0	0	6	0	0	50	0	0	0	0	7	7	
	Total Reptile		11	6	300	317	0	0	372	0	0	109	6	8	468	2	0	0	10	5	299	314
	Total Animals		122	122	302	546	13	19	372	9	5	109	32	25	468	6	4	0	113	124	301	538

Other Species

Part-II

S.No.	Animal Name	Scientific Name	Opening Stock 01.04.2022				Births			Acquisitions			Disposals			Deaths			Closing Stock 31.03.2023			
			M	F	U	T	M	F	U	M	F	U	M	F	U	M	F	U	M	F	U	T
Bird																						
1	Budgerigar	<i>Melopsittacus undulatus</i>	0	0	52	52	0	0	0	0	0	0	0	0	0	0	0	0	0	0	52	52

2	Cockatiel	<i>Nymphicus hollandicus</i>	3	2	0	5	0	0	2	0	0	0	0	0	0	0	0	0	3	2	2	7
3	Cockatoo Gala	<i>Eolophus roseicapilla</i>	0	0	0	0	0	0	0	1	1	0	0	0	0	0	0	0	1	1	0	2
4	Conure Sun	<i>Aratinga solstitialis</i>	0	1	0	1	0	0	0	0	0	0	0	0	0	0	0	0	0	1	0	1
5	Dove Diamond	<i>Geopelia cuneata</i>	0	0	6	6	0	0	0	0	0	0	0	0	0	0	0	0	0	0	6	6
6	Duck Caroline/Wood	<i>Aix sponsa</i>	1	1	0	2	0	0	0	0	0	0	0	0	0	0	0	0	1	1	0	2
7	Duck Mallard	<i>Anas platyrhynchos</i>	0	0	9	9	0	0	0	0	0	0	0	0	0	0	0	0	0	0	9	9
8	Duck Mandarin	<i>Aix galericulata</i>	1	1	0	2	0	0	0	0	0	0	0	0	0	0	0	0	1	1	0	2
9	Duck Muscovy	<i>Cairina moschata</i>	5	4	0	9	0	0	0	0	0	0	0	0	0	0	0	0	5	4	0	9
10	Egret Large	<i>Ardea alba</i>	3	3	0	6	0	0	0	0	0	0	0	0	0	0	0	0	3	3	0	6
11	Emu	<i>Dromaius novaehollandiae</i>	3	2	0	5	0	0	0	0	0	0	0	0	2	2	0	1	0	0	0	1
12	Finch Zebra	<i>Taeniopygia guttata</i>	0	0	8	8	0	0	0	0	0	0	0	0	0	0	0	0	0	0	8	8
13	Fowl Guneaia	<i>Numida meleagris</i>	9	6	0	15	0	0	0	0	0	0	0	0	0	0	0	0	9	6	0	15
14	Fowl Red Jungle	<i>Gallus gallus</i>	18	3	0	21	0	0	0	0	0	0	0	0	0	0	0	0	18	3	0	21
15	Fowl Red Spur	<i>Galloperdix spadicea</i>	1	2	0	3	0	0	0	0	0	0	0	0	0	0	0	0	1	2	0	3
16	Goose	<i>Anser anser</i>	0	0	37	37	0	0	0	0	0	0	0	0	0	0	0	0	0	0	37	37
17	Gull Caspian	<i>Larus cachinnans</i>	0	0	1	1	0	0	0	0	0	0	0	0	0	0	0	0	0	0	1	1
18	Hen White Breasted Water	<i>Amauornis phoenicurus</i>	1	2	0	3	0	0	0	0	0	0	0	0	0	0	0	0	1	2	0	3
19	Heron Night	<i>Nycticorax nycticorax</i>	5	5	26	36	0	0	6	0	0	0	0	0	0	0	0	0	5	5	32	42
20	Heron Purple	<i>Ardea purpurea</i>	0	0	2	2	0	0	0	0	0	0	0	0	0	0	0	0	0	0	2	2
21	Ibis White	<i>Threskiornis melanocephala</i>	0	0	15	15	0	0	2	0	0	0	0	0	0	0	0	0	0	0	17	17
22	Lovebird Fischer's	<i>Agapornis fischeri</i>	0	0	2	2	0	0	0	0	0	0	0	0	0	0	0	0	0	0	2	2
23	Lovebird Peach Faced	<i>Agapornis roseicollis</i>	0	0	1	1	0	0	0	0	0	0	0	0	0	0	0	0	0	0	1	1
24	Macaw Blue and Gold	<i>Ara ararouna</i>	0	0	0	0	0	0	0	2	2	0	0	0	0	0	0	0	2	2	0	4
25	Kite Brahminy	<i>Haliastur indus</i>	0	0	7	7	0	0	0	0	0	2	0	0	0	0	0	0	0	0	9	9
26	Kite Pariah/Black	<i>Milvus migrans</i>	0	0	11	11	0	0	0	0	0	3	0	0	5	0	0	0	0	0	9	9
27	Koel	<i>Eudynamys scolopaceus</i>	0	2	0	2	0	0	0	0	0	0	0	0	0	0	0	0	0	2	0	2
28	Ostrich	<i>Struthio camelus</i>	2	0	0	2	0	0	0	0	1	0	0	0	0	0	0	0	2	1	0	3
29	Owl Barn	<i>Tyto alba</i>	0	0	12	12	0	0	0	0	0	5	0	0	8	0	0	0	0	0	9	9
30	Owl Brown Fish	<i>Bubo zeylonensis</i>	0	0	2	2	0	0	0	0	0	0	0	0	0	0	0	0	0	0	2	2
31	Owl Brown Wood	<i>Strix leptogrammica</i>	0	0	1	1	0	0	0	0	0	0	0	0	0	0	0	0	0	0	1	1
32	Owl Grey Horned	<i>Bubo bengalensis</i>	0	0	1	1	0	0	0	0	0	1	0	0	0	0	0	0	0	0	2	2

33	Owl Scoups	<i>Otus scops</i>	0	0	2	2	0	0	0	0	0	0	0	0	0	0	0	0	0	0	2	2
34	Parakeet Alexandrine	<i>Psittacula eupatria</i>	10	8	0	18	0	0	0	0	0	8	0	0	0	0	0	0	10	8	8	26
35	Parakeet Blossom Headed	<i>Psittacula cyanocephala</i>	1	1	2	4	0	0	0	0	0	0	0	0	0	0	0	1	1	2	4	
36	Parakeet Rose Ringed	<i>Psittacula krameri</i>	10	13	35	58	0	0	0	0	0	12	0	0	42	0	0	0	10	13	5	28
37	Parakeet Rose Ringed Grey	<i>Psittacula krameri</i>	0	0	2	2	0	0	0	0	0	0	0	0	2	0	0	0	0	0	0	0
38	Parakeet Rose Ringed Blue	<i>Psittacula krameri</i>	0	0	2	2	0	0	0	0	0	0	0	0	2	0	0	0	0	0	0	0
39	Parrot African Grey	<i>Psittacus erithacus</i>	0	1	0	1	0	0	0	0	0	0	0	0	0	0	1	0	0	0	0	0
40	Pelican Spot Billed/Grey	<i>Pelicanus phillippenis</i>	1	2	0	3	0	0	0	0	0	0	0	0	0	1	0	1	1	0	2	
41	Pheasant Lady Amherst	<i>Chrysolophus amherstiae</i>	2	2	0	4	0	0	0	0	0	0	0	0	0	0	0	2	2	0	4	
42	Pheasant Red Golden	<i>Chrysolophus pictus</i>	3	1	0	4	0	0	0	0	0	0	0	0	0	0	0	3	1	0	4	
43	Pheasant Ring Necked	<i>Phasianus colchicus</i>	0	1	0	1	0	0	0	0	0	0	0	0	0	0	0	0	1	0	1	
44	Pheasant Silver	<i>Lophura nycthemera</i>	3	1	0	4	0	0	0	0	0	0	0	0	0	0	0	3	1	0	4	
45	Pheasant Yellow Golden	<i>Chrysolophus pictus</i>	1	1	0	2	0	0	0	0	0	0	0	0	0	0	0	1	1	0	2	
46	Pigeon Blue Rock	<i>Columba livia</i>	0	0	8	8	0	0	0	0	0	0	0	0	0	0	0	0	0	8	8	
47	Pigeon Fantail		0	0	8	8	0	0	0	0	0	0	0	0	0	0	0	0	0	8	8	
48	Rhea Brown	<i>Rhea americana</i>	1	1	0	2	0	0	0	0	0	0	0	0	0	0	0	1	1	0	2	
49	Rhea White	<i>Rhea americana</i>	1	1	0	2	0	0	0	0	0	0	0	0	0	0	0	1	1	0	2	
50	Sparrow Java	<i>Padda oryzivora</i>	0	0	5	5	0	0	0	0	0	0	0	0	0	0	0	0	0	5	5	
51	Stork Painted	<i>Mycteria leucocephala</i>	9	10	4	23	0	0	0	0	0	0	0	0	0	0	0	9	10	4	23	
52	Swan Black	<i>Cygnus atratus</i>	2	1	0	3	0	0	0	0	0	0	0	0	1	0	0	1	1	0	2	
53	Teal Ringed	<i>Callonetta leucophrys</i>	1	1	0	2	0	0	0	0	0	0	0	0	0	0	0	1	1	0	2	
54	Teal Lesser Whistling	<i>Dendrocygna javanica</i>	0	0	9	9	0	0	0	0	0	0	0	0	0	0	0	0	0	9	9	
55	Turaco Green	<i>Tauraco persa</i>	0	0	0	0	0	0	0	1	1	0	0	0	0	0	0	1	1	0	2	
56	Turaco Violet	<i>Tauraco persa</i>	0	0	0	0	0	0	0	1	1	0	0	0	0	0	0	1	1	0	2	
	Total Bird		97	79	270	446	0	0	10	5	6	31	0	0	59	3	4	0	99	81	252	432
	Mammal																					
57	Deer Barking	<i>Muntiacus muntjak</i>	6	14	0	20	1	0	0	0	0	0	0	0	0	0	0	7	14	0	21	
58	Deer Sambar	<i>Cervus unicolor</i>	16	15	0	31	0	0	0	0	0	0	0	0	0	0	0	16	15	0	31	
59	Deer Spotted	<i>Axis axis</i>	14	25	0	39	0	0	0	0	0	0	0	0	0	0	0	14	25	0	39	
60	Hare Black Naped	<i>Lepus nigricollis</i>	1	1	0	2	0	0	0	0	0	0	0	0	0	0	0	1	1	0	2	
61	Hippopotamus	<i>Hippopotamus amphibius</i>	3	1	0	4	0	0	0	0	0	0	0	0	0	0	0	3	1	0	4	

62	Hyena Striped	<i>Hyaena hyaena</i>	1	1	4	6	0	0	2	0	0	0	0	0	0	0	0	0	1	1	6	8
63	Lion Hybrid	<i>Panthera leo</i>	0	1	0	1	0	0	0	0	0	0	0	0	0	0	0	0	0	1	0	1
64	Mara Patagonian	<i>Dolichotis patagonum</i>	0	0	0	0	0	0	0	1	0	0	0	0	0	0	0	0	1	0	0	1
65	Marmoset Common	<i>Callithrix jacchus</i>	0	0	0	0	0	0	0	2	2	0	0	0	0	0	0	0	2	2	0	4
66	Mongoose Ruddy	<i>Herpestes smithii</i>	1	1	0	2	0	0	0	0	0	0	0	0	0	0	0	0	1	1	0	2
67	Monkey Squirrel	<i>Saimiri sciureus</i>	0	0	0	0	0	0	0	1	1	0	0	0	0	0	0	0	1	1	0	2
68	Nilgai	<i>Boselaphus tragocamelus</i>	0	0	0	0	0	0	0	2	2	0	0	0	0	0	0	0	2	2	0	4
69	Pig Wild	<i>Sus scrofa</i>	8	16	0	24	0	0	0	0	0	0	0	0	0	0	0	0	8	16	0	24
70	Porcupine Indian	<i>Hystrix indica</i>	4	5	0	9	0	0	0	0	0	0	0	0	0	0	0	0	4	5	0	9
71	Tamarin Red Handed	<i>Saguinus midas</i>	0	0	0	0	0	0	0	1	1	0	0	0	0	0	0	0	1	1	0	2
	Total Mammal		54	80	4	138	1	0	2	7	6	0	0	0	0	0	0	0	62	86	6	154
	Reptile																					
72	Boa Common Sand	<i>Gongylophis conicus</i>	0	0	4	4	0	0	0	0	0	0	0	0	0	0	0	0	0	0	4	4
73	Boa Red Sand	<i>Eryx johnii</i>	0	0	9	9	0	0	0	0	0	0	0	5	0	0	0	0	0	0	4	4
74	Boa Whitaker's	<i>Eryx whitakeri</i>	0	0	12	12	0	0	18	0	0	4	0	0	22	0	0	0	0	0	12	12
75	Caiman Spectacled	<i>Caiman crocodilus</i>	2	2	0	4	0	0	0	0	0	0	0	0	1	1	0	1	1	0	2	2
76	Crocodile Nile	<i>Crocodylus niloticus</i>	0	0	3	3	0	0	0	0	0	0	0	0	1	0	0	0	0	2	2	2
77	Crocodile Siamensis	<i>Crocodylus siamensis</i>	0	0	4	4	0	0	0	0	0	0	0	0	2	0	0	0	0	2	2	2
78	Iguana Green	<i>Iguana iguana</i>	2	2	0	4	0	0	0	0	0	0	0	0	0	1	0	2	1	0	3	3
79	Krait Common Indian	<i>Bungarus caeruleus</i>	0	0	6	6	0	0	0	0	0	2	0	0	3	0	0	0	0	0	5	5
80	Racer Banded	<i>Argyrogena fasciolata</i>	0	0	2	2	0	0	0	0	0	0	0	0	0	1	0	0	0	0	1	1
81	Snake Bronzeback Tree	<i>Dendrelaphis tristis</i>	0	0	8	8	0	0	0	0	0	3	0	0	3	0	0	0	0	0	8	8
82	Snake Ceylon Cat	<i>Boiga ceylonensis</i>	0	0	6	6	0	0	0	0	0	1	0	0	1	0	0	0	0	0	6	6
83	Snake Common Wolf	<i>Lycodon aulicus</i>	0	0	8	8	0	0	6	0	0	4	0	0	10	0	0	0	0	0	8	8
84	Snake Green Vine	<i>Ahaetulla nasuta</i>	0	0	5	5	0	0	8	0	0	6	0	0	12	0	0	0	0	0	7	7
85	Snake Keelback Striped	<i>Amphiesma stolatum</i>	0	0	15	15	0	0	4	0	0	3	0	0	7	0	0	0	0	0	15	15
86	Snake Montane Trinket	<i>Coelognathus helena monticollaris</i>	0	0	5	5	0	0	16	0	0	4	0	0	16	0	0	0	0	0	9	9
87	Terrapin Red Eared	<i>Trachemys scripta</i>	0	0	43	43	0	0	2	0	0	1	0	0	0	0	0	0	0	0	46	46
88	Tortoise Indian Star	<i>Geochelone elegans</i>	0	0	37	37	0	0	0	0	0	0	0	0	0	0	0	0	0	0	37	37
89	Turtle Giant Soft shell	<i>Pelochelys cantorii</i>	1	0	0	1	0	0	0	0	0	0	0	0	0	0	0	0	1	0	0	1
90	Viper Hump Nosed Pit	<i>Hypnale hypnale</i>	0	0	6	6	0	0	4	0	0	0	0	0	6	0	0	0	0	0	4	4
91	Viper Malabar Pit	<i>Trimeresurus</i>	0	0	2	2	0	0	0	0	0	0	0	0	0	0	0	0	0	0	2	2

		<i>malabaricus</i>																				
	Total Reptile		5	4	175	184	0	0	58	0	0	28	0	0	85	4	3	0	4	2	172	178
	Pisces of Western Ghats																					
92	Hunase / Murangi	<i>Lepidocephalus thermalis</i>	0	0	5	5	0	0	0	0	0	0	0	0	0	0	0	0	0	5	5	
93	Kijan	<i>Puntius filamentosus</i>	0	0	12	12	0	0	0	0	0	0	0	0	0	0	0	0	0	12	12	
94	Kol kijan	<i>Rasbora daniconius</i>	0	0	8	8	0	0	0	0	0	0	0	0	0	0	0	0	0	8	8	
95	Kuchhu	<i>Channa striatus</i>	0	0	9	9	0	0	0	0	0	0	0	0	0	0	0	0	0	9	9	
96	Madanji / Korava	<i>Chenna punctatus</i>	0	0	6	6	0	0	0	0	0	0	0	0	0	0	0	0	0	6	6	
97	Moogumalli / Kudian	<i>Aplocheilus lineatus</i>	0	0	8	8	0	0	0	0	0	0	0	0	0	0	0	0	0	8	8	
98	Mugudu / Magur	<i>Clarius batrachus</i>	0	0	14	14	0	0	0	0	0	0	0	0	0	0	0	0	0	14	14	
99	Mulvel / Kuri meenu	<i>Labeo nigriscens</i>	0	0	2	2	0	0	0	0	0	0	0	0	0	0	0	0	0	2	2	
	Total Fish		0	0	64	64	0	0	0	0	0	0	0	0	0	0	0	0	0	64	64	
	Total Animals		156	163	513	832	1	0	70	12	12	59	0	0	144	7	7	0	165	169	494	828

Mortality of Animals:

S.No.	Animal Name	Scientific Name	Sex	Date of Death	Reason of Death
	Birds				
1	Fowl Jungle Grey	<i>Gallus sonneratii</i>	Female	20.07.2022	Senility.
2	Peafowl White/Leucustic	<i>Pavo cristatus</i>	Female	20.11.2022	Chronic pneumonia leading to respiratory failure.
3	Emu	<i>Dromaius novaehollandiae</i>	Female	27.04.2022	Egg binding.
4	Emu	<i>Dromaius novaehollandiae</i>	Male	12.07.2022	Shock due to asphyxia.
5	Emu	<i>Dromaius novaehollandiae</i>	Male	15.07.2022	Shock due to asphyxia.
6	Emu	<i>Dromaius novaehollandiae</i>	Female	04.08.2022	Ascites.
7	Parrot African Grey	<i>Psittacus erithacus</i>	Female	08.04.2022	Shock due to wounds from predator attack.
8	Pelican Spot Billed/Grey	<i>Pelicanus phillippenis</i>	Female	28.07.2022	Pneumonia.
9	Swan Black	<i>Cygnus atratus</i>	Female	13.05.2022	Predator attack.
	Mammals				
10	Cat Leopard	<i>Prionailurus bengalensis</i>	Male	13.09.2022	Cardiopulmonary failure.
11	Gaur Indian	<i>Bos gaurus</i>	Male	21.03.2023	Sepsis due to horn fracture.
12	Leopard/ Panther	<i>Panthera pardus</i>	Female	21.03.2023	Senility.
13	Macaque Rhesus	<i>Macaca mulatta</i>	Male	30.05.2022	Shock due to injuries resulting from infighting.
14	Squirrel Flying	<i>Petinomys fuscocapillus</i>	Male	19.07.2022	Shock due to the injuries.
15	Tiger Bengal	<i>Panthera tigris tigris</i>	Female	11.11.2022	cardiopulmonary failure resulting from renal damage.
	Reptiles				
16	Cobra Indian Melenstic	<i>Naja naja</i>	Male	30.01.2023	Senility.
17	Crocodile Gharial	<i>Gavialis gangeticus</i>	Male	17.02.2023	Hepatic cirrhosis.
18	Caiman Spectacled	<i>Caiman crocodilus</i>	Male	03.04.2022	Multi organ failure due to senility.
19	Caiman Spectacled	<i>Caiman crocodilus</i>	Female	19.05.2022	Pneumonia.
20	Crocodile Nile	<i>Crocodylus niloticus</i>	Male	06.06.2022	Upper respiratory tract infection.
21	Crocodile Siamensis	<i>Crocodylus siamensis</i>	Male	04.04.2022	Upper respiratory tract infection.
22	Crocodile Siamensis	<i>Crocodylus siamensis</i>	Female	13.04.2022	Upper respiratory tract infection.
23	Iguana Green	<i>Iguana iguana</i>	Female	21.04.2022	Egg binding.
24	Racer Banded	<i>Argyrogena fasciolata</i>	Female	11.09.2022	Bacterial sepsis due to scale rot.

Compliance with conditions stipulated by the Central Zoo Authority

S.No.	Norm No.	Condition Stipulated	Time Period to Comply	Status with regard to compliance of the condition
General Requirement				
1	10.1(2)	Though there is excellent tree cover in the zoo, canopy is mostly dominated by <i>Acacia auriculiformis</i> . Attempt should be made to phase out this exotic and replace by native species.	Three years	Development of green belt by growing Western ghats fruit yielding plants are being done on phased manner. Once the W.G. trees established Acacia will be removed.
Administrative and Staffing Pattern				
2	10.2 (1)	The zoo is functioning under Pilikula Development Authority. The Director in charge of the zoo, doesn't have adequate financial delegation to manage the day-to-day business of the zoo efficiently without loss of time. PDA isn't sufficiently sensitive to the need of the zoo. It will make a much better sense to transfer the zoo to Karnataka Forest Department for better coordination to address human wildlife conflict, better sensitivity towards the need of captive animals, and eventually better management with the help of a Director who is appropriately delegated.	Six months	Handing over to Karnataka Forest Department is under progress.
Animal housing, display of animals and animal enclosures				
	10.4(9)	Stand-off Barriers (SOBs) for keeping the visitors at appropriate distance from the exhibit animals, even after a gap of 5 years, are yet to be fixed.	Three months	New stand-off barriers are constructed and 50% is completed.
	10.4 (1)	The new signages haven't been erected even after passage of 5 years.	Three months	New sign boards are erected with QR code
Upkeep and healthcare of animals				
	10.5	Animal Keeper's diary aren't maintained.	Immediately	Already maintained
Acquisition and breeding of animals				
	10.9(1)	Population of the Black Buck is beyond the holding capacity of the	Three months	Excess Black Buck have to be released

		enclosure.		in its habitat. Action will be taken to shift to Renebennur Blackbuck sanctuary after getting permission of Forest Department.
10.9 (1)	Two female lions, 2 female leopard cats and two male ostriches aren't maintained in a socially and behaviourally viable groups. They need to be managed in sexually compatible groups by acquisition of animals from other zoos.		Six months	Female ostrich have been received on animal exchange. Acquisition of male lion is under progress. Efforts are being done to procure male Leopard cat on breeding loan.
Research activities				
10.10 (1)	The zoo doesn't have any research plan to do research on prioritized species and specific area of concern. No research, collaborative or otherwise, are being conducted and no research paper/ technical paper have been published.		Should commence immediately	Under process.



King Cobra hatchlings in Pilikula Biological Park

List of free living wild animals within the zoo premises:

Mammals	Birds	Reptiles
Jungle Cat	Little Cormorant	Indian Cobra
Common Palm Civet	White-necked Stork	Monitor Lizard
Jackal	Pond Heron	Indian Rock Python
Indian Grey Mongoose	Night Heron	Checkered Keelback
Black Naped Hare	Cattle Egret	Rat Snake
Indian Porcupine	Common Pariah Kite	Indian Black Turtle
	Brahminy Kite	Russell's Viper
	Common Peafowl	Whitaker's Boa
	Blue Rock Pigeon	Common Indian Krait
	Roseringed Parakeet	Bronzeback Tree Snake
	Crow-Pheasant	Painted Bronzeback Tree Snake
	Indian Drongo Cuckoo	Snake
	Koel	Common Wolf Snake
	Bran or Screech Owl	Green Vine Snake
	Whitebreasted Kingfisher	Stripped Keelback Snake
	Small Green Bee-Eater	Montane Trinket Snake
	Lesser Goldenbacked	Common Trinket Snake
	Woodpecker	
	Large Green Barbet	
	Indian Pitta	
	Golden Oriole	
	Racket-Tailed Drongo	
	Grey or Ashy Drongo	
	Whitebellied Drongo	
	Indian Myna	
	Tree pie	
	House crow	
	Iora	
	Goldfronted Chloropsis	
	Redwhiskered Bulbul	
	Jungle Babbler	
	Paradise Flycatcher	
	Tailor Bird	
	Magpie-Robin	
	Yellowheaded Wagtail	
	Purple Sunbird	
	House Sparrow	
	Blackheaded Munia	
	Spotted Owlet	
	Scops Owl	