



PILIKULA BIOLOGICAL PARK

Mangaluru, Karnataka.

Annual Report 2018-19



Tiger Cubs in Pilikula Biological Park

Contents

Sl.No.	Particulars	Page No.
1.	Director's report	3
2	History of the zoo	4
3	Vision	5
4	Mission	5
5	Objective	6
6	About us	7
7	Organization Chart	8
8	Human Resources	9
9	Capacity Building of the zoo personnel	9
10	Zoo Advisory Committee	10
11	Statement of income and expenditure of the zoo	11
12	Daily feed schedule of animals	11
13	Vaccination schedule of animals	17
14	De-worming schedule of animals	18
15	Disinfection schedule	19
16	Development works	20
17	Educational and awareness programmes	22
18	Important events	24
19	Veterinary Care	25
20	Seasonal special arrangements for upkeep of animals	26
21	Animal acquisition/transfer/exchange	27
22	Animal Adoption, Donation and Financial Assistance	28
23	Annual inventory of animals	29
24	Mortality of animals	34
25	List of free living wild animals within the zoo premises	34

DIRECTOR'S REPORT

Pilikula Biological Park, a large zoo managed by Dr. Shivaram Karanth Pilikula Nisarga Dhama Society(R), is situated in the outskirts of Mangaluru city. It is one of the major components of larger project of Pilikula Nisarga Dhama which itself is a prime tourist destination of the coastal Karnataka. The zoo was inaugurated during the year 2001 and opened to the public in the year 2004. It is having an area of 82 hectares of land with more than 120 species of animals with over 1200 individuals in total.

Vision is to develop a zoo of international standards in the Western Ghats region and to promote the conservation of fauna and flora of Western Ghats through education, scientific research, captive breeding and establishment of rescue centre as per the approved master plan. The zoo, run by a registered society is prospering through CSR funds from various companies, contributions from animal lovers and general public and through animal adoption programmes. We are successful in keeping the expenditure to a minimum as there is no financial assistance from the government for the maintenance of the zoo. Since its inception, Pilikula has been in a strive towards converting entire area to resemble Western Ghats itself which is one among the 34 global biodiversity hotspots. Based upon this vision, the green belt project was initiated. As a part of the project, the vegetation cover of the zoo area comprising predominantly of exotic Acacia plants are being replaced with endemic species of Western Ghats region in phased manner. The first phase of the project has been completed successfully. The second phase is also in progress covering nearly 60acers.

Pilikula Biological Park can be regarded as a model zoo that can be followed, in providing an animal friendly atmosphere. The zoo uses its vast land area to fulfil the species specific requirements of each animal by providing ample space for them to express their normal behaviour. Thus the simulation of their natural habitat has led not only to a mere physical wellbeing, but also a state of psychological wellbeing as well, implied by their successful reproduction and absence of stereotypic behaviours. The zoo also has a conservation breeding centre of king cobra. We successfully bred King cobra in captivity and released more than 150 King Cobra in their habitat. The zoo also sets an imitable example concerning the day to day activities as it is run by a bare minimum number of staff when compared to other zoos in India which comes under 'major zoo' category.

Pilikula Biological Park is a showcase of mini western ghats. Efforts are being made to construct the enclosures resembling their natural habitat and for creating awareness among people in the ex-situ conservation of Western Ghats fauna and flora.



H J Bhandary
Director
Pilikula Biological Park
Mangalore

History of the zoo:

Pilikula the name derived from the local tulu language ‘Pili’ means Tiger and ‘Kula’ means pond. It is said that in the past years Tigers were extensively found in this locality. The Tigers used to drink water from a huge pond found in the area hence the name “Pilikula”. The natural tiger caves still exist in the locality.

Pilikula Biological Park is a major component of Pilikula Nisarga Dhama. Kadri deer park and mini zoo was closed as per the order of Central Zoo Authority and animals from defunct zoo were shifted to Pilikula. Pilikula Biological Park was planned with the valuable guidance of Sri Puspha Kumar IFS (Retd.) the then PCCF of Andra Pradesh.

Pilikula Biological Park was inaugurated on 12.01.2001 by the Hon’ble Chief Minister of Karnataka. The park has since been recognized by the Central Zoo Authority vide letter No. 23-3/97-CZA(5) dated 12.8.1999 and the layout plan approved by the Central Zoo Authority vide letter No.F.No.23-1/97-CZA(N) dated 4.6.2002. Zoo is run by the Pilikula Nisarga Dhama Society®. Maintenance of the zoo including development of infrastructure, feeding, health care of the animals are done by the Society with the help of donation from institutions, corporate sectors and individuals. There is very little contribution from the Government sector. Pilikula Nisarga Dhama Society was established in April 1997. The Society comprises elected representatives and heads of important public institutions and is presided by the district in-charge minister. The Governing Council comprises of key Officers of various Government departments and is headed by the Deputy Commissioner of Dakshina Kannada District.



Entrance of Pilikula Biological Park.

Pilikula Nisarga Dhama Society ®:

Pilikula Nisarga Dhama (Pilikula) is a major eco-education and tourism development project promoted by the District Administration of Dakshina Kannada in the beautiful city of Mangalore in Karnataka State, India.

Pilikula is an integrated theme park with a wide variety of features; Pilikula has many attractions of cultural and scientific interest. Pilikula extends over an area of 375 acres along the banks of Gurupura River.

Pilikula presently includes a Biological Park, Botanical and Medicinal Gardens, Regional Science Centre, Lake Garden and Boating, Heritage and Artisan Village, Jungle Lodges, Golf Course, Amusement and Water Park.

Pilikula probably the first project of its kind in India, it is inspired by the concept of providing a wholesome experience of the native natural and cultural heritage of the region along with all modern recreational facilities.

It is also an attempt to showcase the rich native heritage and coastal culture of the people of Dakshina Kannada district. In short, Pilikula is one-stop education and recreation destination in India - a must visit place for all visitors to this part of the world.

Pilikula is a registered society, registered on 23.04.1997 under the Karnataka Societies Registration Act 1960 (Sl. No. 17 of Karnataka Act 1960). It consists of a General body with the Dakshina Kannada District in-charge Minister as ex-officio President.



Garden and resting place

Vision:

To develop a zoo of international standards in the Western Ghats region mainly for in-situ and ex-situ conservation of Western Ghats species.

Mission:

To promote the conservation of fauna and flora of Western Ghats region through education, scientific research, captive breeding and establishment of rescue centre.

Strategy of the Zoo:

The novel concept of the Pilikula Biological Park is to run a zoo by a registered society with generous financial help from philanthropist, corporate bodies, institutions, general public, grants from government and income generated by the entry fee and rent from other facilities.



School children visiting Pilikula Biological Park during children carnival.

Objective:

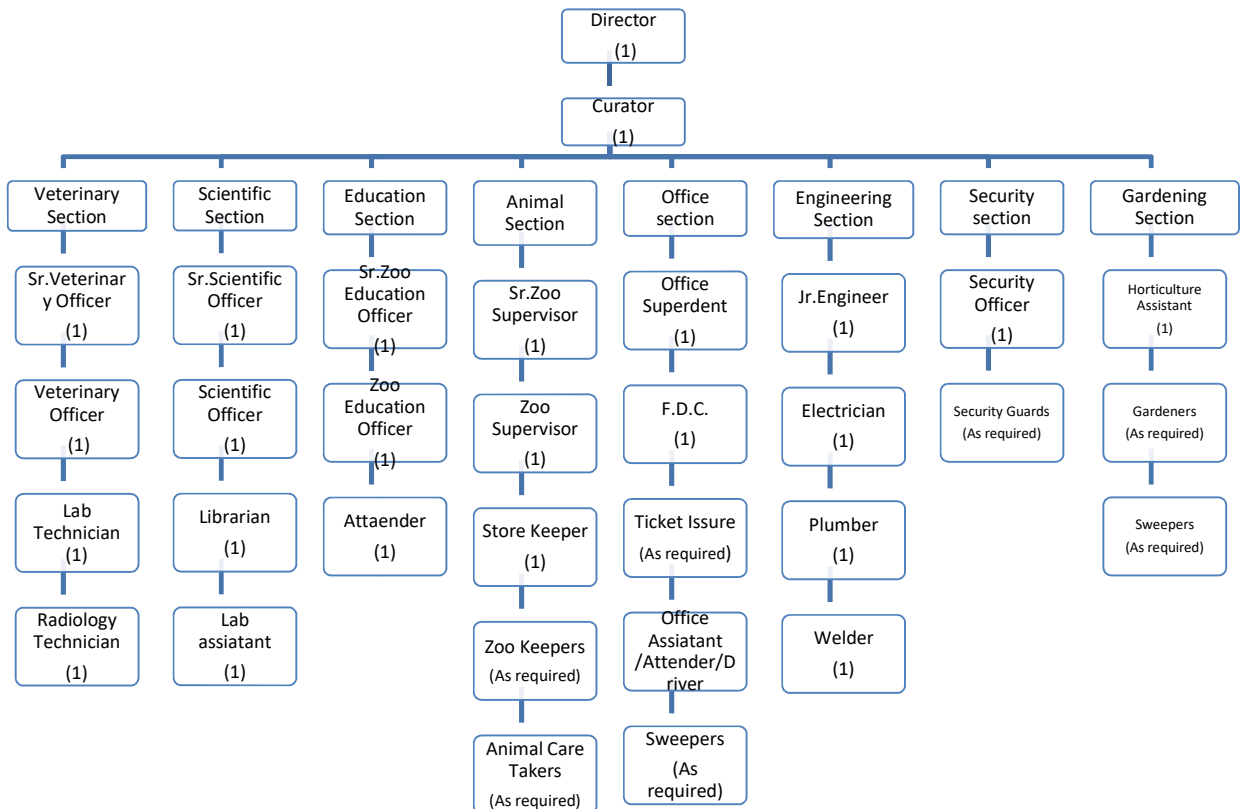
- Showcase the rich fauna and flora of the Western Ghats.
- Conservation and breeding of endangered species found in Western Ghats region for display, exchange, breeding loans and rehabilitation to the wild in keeping with the National Policy and guidelines from time to time.
- Promote awareness among the public in general and students in particular on the need to protect and conserve wildlife and its habitat.
- Encourage research and scientific studies useful for zoo and wildlife management.
- To function as a rescue centre for wild animals posing danger to the humans, wild animals entering into human habitation, orphaned and injured animals in this region.
- Recreation for the purpose of providing wholesome, healthy educational activity by utilizing the natural features.

About us:

S.No.	Particulars	Information
Basic information about the zoo		
1	Name of the Zoo	Pilikula Biological Park
2	Year of establishment	2001
3	Address of the zoo	Director Pilikula Biological Park Vamanjoor
4	State	Karnataka
5	Telephone number	+91 824 2263300
6	Fax number	+91 824 2263300
7	E-mail address	pilikulazoo@gmail.com
8	Website	www.pilikulazoo.com
9	Distance from nearest	Airport: 15km
		Railway station: 12km
		Bus stand: 12km
10	Recognition valid upto	23.01.2020
11	Category of zoo	Large
12	Area (in hectares)	82
13	Number of visitors 2018-19	Adult: 4,21,094
		Children (school and college): 4,37,756
		Free Entry (NGO,Clubs,Sanga etc): 72,471
		Total Indians: 9,31,321
		Total Foreigners: 827
		Total Visitors: 9,32,148
14	Visitors' facilities available in zoo:	Purified Drinking Water
		First Aid
		E-buggy
		Wheel Chair
		Interlock paved roads
		Hi-Tech Toilets
		Relaxing Places
		Gardens
Cafeterias		

		Children Park
15	Weekly closure day of the zoo	Monday
Management personnel of the zoo		
16	Name and designation of the Office in-charge	H J Bhandary Director
17	Senior Scientific Officer	Jerald Vikram Lobo
18	Veterinary Officer	Dr. Vishnu Deth Vijayakumar
19	Education Officer	Suchitra N Rao
Operator of the zoo		
20	Operator	Dr.Shivaram Karanth Pilikula Nisarga Dhama Society (R)
21	Address of the operator	Dr.Shivaram Karanth Pilikula Nisarga Dhama Vamanjoor, Mangaluru (D.K.) Karnataka – 575028
22	Phone number	+91 824 2263565
23	E-mail address	pilikula96@gmail.com

Organization Chart



Human Resources:**Man power of the zoo:**

Sl.No.	Designation	Sanctioned Posts (Nos.)	Names of the incumbent
1	Director	1	H J Bhandary
2	Senior Scientific Officer	1	Jerald Vikram Lobo
3	Veterinary Officer	1	Dr. Vishnu Deth Vijayakumar
4	Zoo Education Officer	1	Suchitra N Rao
5	Assistant Engineer	1	Rakesh D.P.
6	Supervisor	1	Lingappayya
7	Horticulture Assistant	1	Manoj A
8	Office Assistant	As required	Ranjan
9	Animal Care Takers	As required	Udaya Kumar Devendra Dinesh Kumar Kishore Kumar Jayananada Vikesh Ummer Farooq Narayana Gopalakrishna Santosh Meenakshi Ashoka B Sundara

Note: Other required staffs are pooled from Pilikula Nisargadhama.

Capacity building of zoo personnel:

Sl.No.	Name and Designation	Subject	Period	Training institution
1	Dr. Vishnu Deth Vijayakumar Veterinary Officer	Workshop of Indian Zoo Veterinarians on the theme "Recent Trends In Captive	07 th – 09 th January 2019	Sri Chamarajendra Zoological Garden, Mysuru, Karnataka.

		Wild Animals Management”		
2	Rakesh D.P. Assistant Engineer	One day visit to observe some of the animal enclosures.	19 th November 2018	Nehru Zoological Park, Hyderabad, Telengana.
3	Vikesh K Animal Care Taker	Training programme on “Specilized theme based training programme for zoo keepers”	18 th – 22 nd March 2019	Nehru Zoological Park, Hyderabad, Telengana.

Advisory Committee:

Date of constitution: 03.04.2012

Chairperson Deputy Conservator of Forests (Territorial)
Mangalore Division, Mangaluru

Members Executive Director
Dr.Shivarama Karantha Pilikula Nisaga Dhama
Mangaluru

Sri T Subbaya Shetty
Shuttara consultants, Mangaluru

Sri N G Mohan
Beta Agencies, Mangaluru

Sri William D’Souza
Globe International Travels, Mangaluru

Representative
Animal Care Trust, Mangaluru

Member Secretary Director
Pilikula biological Park, Manguluru

Statement of income and expenditure of the zoo:

Revenue		Expenditure	
Particulars	Amount (in lakhs)	Particulars	Amount (in lakhs)
Gate collection	112.66	Salary of staff	54.38
Rent/lease on shops	13.36	Travelling allowance	0.40
Donations	15.68	Office contingency	0.58
Total	141.71	Electricity charges	2.43
		Telephone charges	0.20
		Security staffs	21.61
		Consumable materials	1.55
		Food and fodder	116.71
		Health care of animals-veterinary	1.60
		Motor vehicle hire charges	4.45
		Maintenance and special repair	13.20
		Maintenance of greenery	1.93
		Animal transportation	2.75
		Developmental works	15.99
		Total	237.78

Daily feed schedule of animals:

S.No.	Common Name	Feed Item	Quantity	Remarks
Birds				
1	Eagle White Bellied Sea (<i>Haliaeetus leucogaster</i>)	Minced meat	400g	Daily
2	Fowl Grey Jungle (<i>Gallus sonneratii</i>)	Wheat Poultry feed Mixed grains Sprouted grams	50g 50g 25g 50g	Daily
3	Peafowl (<i>Pavo cristatus</i>)	Wheat Poultry feed Mixed grains Sprouted grams	250g 250g 250g 50g	Daily
4	Spoonbill White (<i>Platalea leucorodia</i>)	Fish	400g	Daily
5	Vulture White Scavenger (<i>Neophron percnopterus</i>)	Minced meat	150g	Daily

6	Budgerigar (<i>Melopsittacus undulates</i>)	Mixed grains Mixed vegetables	200g 100g	Daily
7	Cocktail (<i>Nymphicus hollandicus</i>)	Mixed grains	25g	Daily
8	Conure Sun (<i>Aratinga solstitialis</i>)	Mixed grains	25g	Daily
9	Dove Diamond (<i>Geopelia cuneata</i>)	Mixed grains	10g	Daily
10	Duck Caroline/Wood (<i>Aix sponsa</i>)	Wheat Poultry feed Sprouted grams	50g 25g 25g	Daily
11	Duck Mallard (<i>Anas platyrhynchos</i>)	Wheat Sprouted grams	100g 50g	Daily
12	Duck Mandarin (<i>Aix galericulata</i>)	Wheat Poultry feed Sprouted grams	50g 25g 25g	Daily
13	Duck Muscovy (<i>Cairina moschata</i>)	Wheat Poultry feed Sprouted grams	25g 25g 50g	Daily
14	Emu (<i>Dromaius novaehollandiae</i>)	Poultry feed Mixed vegetables Sprouted grams	1kg 250g 100g	Daily
15	Finch Zebra (<i>Taeniopygia guttata</i>)	Mixed grains	10g	Daily
16	Fowl Red Jungle (<i>Gallus gallus</i>)	Wheat Poultry feed Mixed grains Sprouted grams	50g 50g 25g 25g	Daily
17	Fowl Red Spur (<i>Galloperdix spadicea</i>)	Wheat Poultry feed Mixed vegetables Sprouted grams	100g 100g 100g 50g	Daily
18	Hen White Breasted Water (<i>Amaurornis phoenicurus</i>)	Wheat Poultry feed Mixed grains	10g 10g 10g	Daily
19	Purple Heron (<i>Ardea purpurea</i>)	Fish	100g	Daily
20	Ibis White (<i>Threskiornis melanocephala</i>)	Fish	300g	Daily
21	Lovebird Peach Faced (<i>Agapornis roseicollis</i>)	Mixed grains	10g	Daily
22	Kite Brahminy (<i>Haliastur Indus</i>)	Minced meat	100g	Daily
23	Kite Pariah/Black (<i>Milvus migrans</i>)	Minced meat	100g	Daily
24	Koel (<i>Eudynamys scolopaceus</i>)	Poultry feed Fruits	20g 100g	Daily
25	Macaw Blue and Gold	Sunflower seeds Fruits	250g 100g	Daily

		Sprouted grams	100g	
26	Ostrich (<i>Struthio camelus</i>)	Wheat Poultry feed Mixed vegetables Sprouted grams	5kg 7kg 200g 5kg	Daily
27	Owl Barn (<i>Tyto alba</i>)	Minced meat	75g	Daily
28	Owl Bay (<i>Phodilus badius</i>)	Minced meat	75g	Daily
29	Owl Brown Fish (<i>Bubo zeylonensis</i>)	Minced meat	75g	Daily
30	Owl Grey Horned (<i>Bubo bengalensis</i>)	Minced meat	75g	Daily
31	Owl Scoups (<i>Otus scops</i>)	Minced meat	25g	Daily
32	Parakeet Alexandrine (<i>Psittacula eupatria</i>)	Mixed grains Mixed vegetables Sprouted grams	25g 5g 40g	Daily
33	Parakeet Blossom Headed (<i>Psittacula cyanocephala</i>)	Mixed grains Mixed vegetables Sprouted grams	25g 2g 20g	Daily
34	Parakeet Rose Ringed (<i>Psittacula krameri</i>)	Wheat Mixed grains Mixed vegetables Sprouted grams	250g 25g 50g 25g	Daily
35	Pheasant Lady Amherst (<i>Chrysolophus amherstiae</i>)	Wheat Poultry feed Sprouted grams	50g 50g 25g	Daily
36	Pheasant Red Golden (<i>Chrysolophus pictus</i>)	Wheat Poultry feed Sprouted grams	50g 50g 25g	Daily
37	Pheasant Ring Necked (<i>Phasianus nycthemera</i>)	Wheat Poultry feed Sprouted grams	50g 50g 25g	Daily
38	Pheasant Silver (<i>Lophura nycthemera</i>)	Wheat Poultry feed Sprouted grams	50g 50g 25g	Daily
39	Pheasant Yellow Golden (<i>Chrysolophus pictus</i>)	Wheat Poultry feed Sprouted grams	50g 50g 25g	Daily
40	Pigeon Blue Rock (<i>Columba livia</i>)	Mixed grains	50g	Daily
41	Sparrow Java (<i>Padda oryzivora</i>)	Mixed grains	10g	Daily
42	Stork Painted (<i>Mycteria leucocephala</i>)	Fish	500g	Daily
43	Teal Ringed (<i>Callonetta leucophrys</i>)	Wheat Poultry feed Sprouted grams	50g 50g 50g	Daily

44	Teal Lesser Whistling (<i>Dendrocygna javanica</i>)	Wheat Poultry feed Sprouted grams	50g 50g 50g	Daily
Mammals				
1	Bear Sloth (<i>Meluesus ursinus</i>)	Rice Milk Coconut Jaggery Fruits Egg Honey	500g 1ltr 1no 250g 2kg 1no 200ml	Daily
2	Black Buck (<i>Antilope cervicapra</i>)	Green leaves Wheat bran Horse gram Salt Mixed vegetables	3kg 300g 250g 2g 200g	Daily
3	Cat Jungle (<i>Felis chaus</i>)	Chicken	200g	Six days a week
4	Cat Leopard (<i>Felis bengalensis</i>)	Chicken	200g	Six days a week
5	Civet Common Palm (<i>Paradoxurus hermaphrodites</i>)	Meat with 30%bone	150g	Six days a week
6	Civet Indian Small (<i>Viverricula indica</i>)	Chicken	150g	Six days a week
7	Deer Mouse (<i>Moschiola indica</i>)	Green leaves Mixed vegetables Green gram Fruits	100g 100g 50g 100g	Daily
8	Jackal (<i>Canis aureus</i>)	Meat with 30%bone	250g	Six days a week
9	Langur Common (<i>Presbytis entellus</i>)	Vegetable Seasonal fruits Ground nuts	200g 100g 50g	Daily
10	Leopard/ Panther (<i>Panthera pardus</i>)	Meat with 30%bone Meat boneless Chicken	1kg 750g 1.250kg	Six days a week
11	Lion Asiatic (<i>Panthera leo persica</i>)	Meat with 30%bone Meat boneless Chicken	6kg 2kg 1kg	Six days a week
12	Loris Slender (<i>Loris lydekkerianus</i>)	Insects Fruits	2no. 20g	Daily
13	Macaque Bonnet (<i>Macaca radiate</i>)	Vegetable Seasonal fruits Ground nuts	200g 100g 50g	Daily
14	Macaque Lion Tailed (<i>Macaca silensus</i>)	Vegetable Seasonal fruits Ground nuts	200g 200g 50g	Daily

15	Macaque Rhesus (<i>Macaca mulatta</i>)	Vegetable Seasonal fruits Ground nuts	200g 100g 50g	Daily
16	Mongoose Indian Grey (<i>Herpestes edwardsi</i>)	Meat with 30%bone Chicken	250g 75g	Six days a week
17	Squirrel Flying (<i>Petinomys fuscocapillus</i>)	Ground nut Seasonal fruits Mixed vegetables	5g 50g 50g	Daily
18	Squirrel Giant (<i>Ratufa indica</i>)	Ground nut Seasonal fruits Mixed vegetables	25g 100g 100g	Daily
19	Tiger Bengal (<i>Panthera tigris tigris</i>)	Meat with 30%bone Meat boneless Chicken	5kg 3kg 1.250kg	Six days a week
20	Deer Barking (<i>Muntiacus muntjak</i>)	Green leaves Wheat bran Horse gram Salt Mixed vegetables	2kg 250g 250g 2g 100g	Daily
21	Deer Sambar (<i>Cervus unicolor</i>)	Green leaves Wheat bran Horse gram Salt Mixed vegetables	4kg 500g 300g 3g 200g	Daily
22	Deer Spotted (<i>Axis axis</i>)	Green leaves Wheat bran Horse gram Salt Mixed vegetables	3kg 300g 250g 2g 200g	Daily
23	Hare Black Naped (<i>Lepus nigricollis</i>)	Green leaves Mixed vegetables	100g 100g	Daily
24	Hippopotamus (<i>Hippopotamus amphibious</i>)	Green leaves Wheat bran Horse gram Salt Mixed vegetables Green gram Bengal gram	100kg 2.5kg 2.5kg 50g 2kg 1kg 1kg	Daily
25	Lion Hybrid (<i>Panthera leo</i>)	Meat with 30%bone Meat boneless Chicken	6kg 2kg 1kg	Six days a week
26	Mongoose Ruddy (<i>Herpestes smithii</i>)	Meat with 30%bone Chicken	250g 75g	Six days a week
27	Pig Wild (<i>Sus scrofa</i>)	Mixed vegetables Tubers Horse gram	2kg 500g 100g	Daily

		Wheat bran	100g	
28	Porcupine Indian	Mixed vegetables Tubers Fruits	500g 500g 200g	Daily
Reptiles				
1	Cobra Indian (<i>Naja naja</i>)	Rat	1no.	Twice a week
2	Cobra King (<i>Ophiophagus hanna</i>)	Snake	1 no.	Twice a week
3	Crocodile Gharial (<i>Gavialis gangeticus</i>)	Fish	1kg	Thrice a week
4	Crocodile Marsh (<i>Crocodylus palustris</i>)	Meat	1kg	Twice a week
5	Monitor Lizard (<i>Varanus bengalensis</i>)	Chicken	50g	Six days a week
6	Python Indian Rock (<i>Python molurus molurus</i>)	Rat/Chicken	2no.	Twice a week
7	Python Reticulated (<i>Python reticulates</i>)	Rat/Chicken	2 no.	Twice a week
8	Keelback Checkered (<i>Henochropis piscator</i>)	Fish	2no	Twice a week
9	Snake Rat (<i>Ptyas mucosus</i>)	Mice/Rat	1no.	Twice a week
10	Turtle Giant Soft Shell (<i>Pelochelys cantorii</i>)	Minced meat Fish	50g 150g	Daily
11	Turtle Indian Black (<i>Melanochelys trisuga</i>)	Minced meat Fish	25g 25g	Daily
12	Viper Russells (<i>Vipera ruselli</i>)	Rat/Mice	1no.	Twice a week
13	Boa Common Sand (<i>Gongylophis conicus</i>)	Mice	1no.	Twice a week
14	Boa Red Sand (<i>Eryx johnii</i>)	Mice	1no.	Twice a week
15	Boa Whitaker's (<i>Eryx whitakeri</i>)	Mice	1no.	Twice a week
16	Caiman Spectacled (<i>Caiman crocodiles</i>)	Meat	750g	Thrice a week
17	Crocodile African Dwarf (<i>Orsterlaemess tetraspis</i>)	Meat	750g	Thrice a week
18	Crocodile Nile (<i>Crocodylus niloticus</i>)	Meat	1kg	Thrice a week
19	Crocodile Siamensis (<i>Crocodylus siamensis</i>)	Meat	1kg	Thrice a week
20	Krait Common Indian (<i>Bungarus caeruleus</i>)	Mice	1 no.	Twice a week
21	Racer Banded (<i>Argyrogena fasciolata</i>)	Mice	1 no.	Twice a week
22	Snake Bronzeback Tree (<i>Deudrelaphis tristis</i>)	Lizard	1 no.	Twice a week

23	Snake Ceylon Cat (<i>Boiga ceylonensis</i>)	Lizard/mice	1 no.	Twice a week
24	Snake Common Wolf (<i>Lycodon aulicus</i>)	Lizard/mice	1 no.	Twice a week
25	Snake Green Vine (<i>Ahaetualla nasuttus</i>)	Mice	1 no.	Twice a week
26	Keelback Striped (<i>Amphiesma siolata</i>)	Lizard	1 no.	Twice a week
27	Snake Montane Trinket (<i>Coelognathus helena monticollaris</i>)	Mice	1 no.	Twice a week
28	Terrapin Red Eared (<i>Trachemys scripta</i>)	Minced meat Fish	25g 25g	Daily
29	Turtle Mud or Flap-Shell (<i>Lissemys punctata</i>)	Minced meat Fish	25g 25g	Daily
30	Tortoise Indian Star (<i>Geochelone elegans</i>)	Mixed vegetables Grass	20g 10g	Daily
31	Viper Hump Nosed Pit (<i>Hypnale hypnale</i>)	Mice	1 no.	Twice a week
32	Viper Malabar Pit (<i>Trimeresums malbaricus</i>)	Mice	1 no.	Twice a week

Vaccination Schedule of animals

Sl.No.	Species	Disease vaccinated for	Name of the Vaccine and dosage/ quantity used	Periodicity	Remarks
1	Felids	Feline Panleukopenia, Feline Rhinotracheitis, Feline Calcivirus infection & Rabies	Feline panleukopenia + feline rhinotracheitis + feline calci virus trivalent (killed vaccine)+Rabies cell culture (inactivated) 1 ml S/C	Annual	
2	Canids	Canine distemper , Canine adenoviral infection, canine parvo viral infection	Canine distemper + canine adenovirus type 2 (CAV-2) + canine parvo virus vaccine (attenuated live virus) 1 ml S/C	Annual	

		Rabies	Rabies cell culture (inactivated) 1 ml S/C	Annual	
3	Ursids	Rabies	Rabies cell culture (inactivated) 1 ml S/C	Annual	
4	Birds	New Castle Disease	Lasota vaccine Through D/W	Annual	

De-worming Schedule of animals

Sl.No.	Species	Drug used	Month
1	Anseriformes (ducks and geese)	Fenbendazole – 10mg /kg P/O	3 months interval
2	Galliformes (pheasants)	Fenbendazole – 20mg /kg P/O	3 months interval
3	Ciconiiformes (spoonbill & ibis)	Fenbendazole – 25mg /kg P/O	3 months interval
4	Psittaciformes (parrots & parakeets)	Albendazole – 20 mg/kg P/O	3 months interval
5	Pelican	Fenbendazole – 20mg /kg P/O	3 months interval
6	Columbiformes (pigeons & doves)	Fenbendazole – 20mg /kg P/O	3 months interval
7	Raptors	Fenbendazole – 20mg /kg P/O	3 months interval
8	Ratites	Albendazole – 10 mg/kg P/O	3 months interval
9	Owls	Fenbendazole – 25mg /kg P/O	3 months interval
10	Snakes	Fenbendazole – 25mg /kg P/O	3 months interval
11	Crocodiles and tortoises	Fenbendazole – 50mg /kg P/O	3 months interval
12	Deers and antelopes	Ivermectin – 0.2 mg /kg P/O	3 months interval
13	Porcupine	Fenbendazole – 20mg /kg P/O	3 months interval
14	Squirrels	Fenbendazole – 20mg /kg P/O	3 months interval
15	Small cats	Fenbendazole – 25mg /kg P/O	3 months interval

16	Big cats	Combination of Fenbendazole, praziquantel and pyrantel pamoate	3 months interval
17	Primates	Fenbendazole – 25mg /kg P/O	3 months interval
18	Jackals	Fenbendazole – 50mg /kg P/O	3 months interval
19	Bears	Fenbendazole – 25mg /kg P/O	3 months interval
20	Wild boar	Ivermectin – 0.2 mg /kg P/O	3 months interval
21	Hippopotamus	Ivermectin – 0.2 mg /kg P/O	3 months interval

*Routine faecal sample examination is done for all zoo collections at 3 months interval for estimation of parasitic load and if found positive, therapeutic drugs at prescribed doses will be included.

Disinfection Schedule

Sl.No.	Species	Type of enclosure	Disinfectant used and method	Frequency of disinfection
1	All species	Open enclosures, animal houses and walkways	Kohrsolin- Th (gluteraldehyde disinfectant) as spray	1 month
2	All species	Entrance of zoo, animal houses, service gate, zoo hospital & feed storage room	1% potassium permanganate solution as foot dip and wheel dip	Daily
3	All species	Drinking water	Sokrena (didecyl dimethyl ammonium chloride) as water sanitizer	Daily

Developmental Works
Construction of new enclosures:

Dhole:



A scientifically designed spacious enclosure for Dholes is constructed to house two pairs of Indian Wild Dogs received from Indira Gandhi Zoological Park, Vishakapatnam, Andhra Pradesh.

Iguana:



An exhibit enclosure is constructed for housing two pairs of Iguana received from Nehru Zoological Park, Hyderabad, Telangana.

Indian Gaur:



A spacious wooded exhibit enclosure with natural tree growth has been constructed for the Indian Gaur received from Arignar Anna Zoological Park, Vandalur, Tamil Nadu.

Mouse Deer:



Three male and two female mouse deers received from Nehru Zoological Park, Hyderabad, Telengana are housed in newly constructed Mouse Deer exhibit enclosure.

Lion- Tailed Macaque:



An attractive exhibit enclosure for LTM has been constructed to house a pair of Lion Tailed Macaque which was kept in quarantine facility.



Pavement of interlock for visitor's path and service roads



Battery operated vehicle facility for the visitors

Installation of CCTV:



CCTV's have been installed along visitor's path and exhibit enclosures to monitor the movement of visitor's animal enclosures round the clock.

Education and Awareness Programme:

World Environment Day

World Environment day was celebrated on 15-06-2018. On the eve of this celebration high school students were invited from different schools for drawing competition and quiz competition on the theme **“Beat the plastic pollution”** and also invited B.Ed students for the interactive sessions.



Sri Dr G. N Indresh, Director, Regional Museum of Natural History, Mysore inaugurated the program by planting a tree, Sri Rajshekar Puranik, Senior Environmental Officer, Karnataka State Pollution Control board and Sri Jayaprakash Nayak, Senior Scientific officer, Karnataka State Pollution control board were chief guests, Sri V Prasanna K A S, Executive Director, Pilikula Nisargadhama and Sri H. J Bhandary, Director, Pilikula Biological Park welcomed the gathering. Sri Rajshekar Puranik delivered a talk on the theme **“Beat the plastic pollution”**.

H.J Bhandary, The Director, Pilikula Biological Park welcomed the gathering and spoke about the importance of celebrating Environment day and thanked the Regional Museum of Natural History and Karnataka State Pollution Control Board for sponsoring the program. The President was overwhelmed to see the presence of children in large number and appreciated the interest and work done by Pilikula Biological Park towards conservation of wildlife. The winners were honoured with awards, Educational kits and certificates.

Wildlife Week 2018

Programme was inaugurated by Dr. Akthar Hussain, Dean, Yenepoya college of Dental Science and Sri Ganesh Somayaji, Senior artist by painting a theme of wildlife and nature, Sri Prasanna.V K.A.S, Executive Director, Dr Shivaram Karantha Pilikula Nisarga Dhama were the other Chief Guests. H. J. Bhandary, Director, Pilikula Biological Park welcomed the gathering and spoke about the importance of wildlife week celebration.



Dr Akthar Hussain and senior artist Sri Ganesh Somayaji inaugurating the function by sketching and painting the scenery based on theme wildlife and nature



Sri H.J Bhandary, Director, Pilikula Biological park welcoming the gathering



Selected Photos



Drawing competition



Fancy dress competition

Important Events:

Nagaland Governor's Visit to Pilikula:



Honable Padmanabha Acharya, Governor of Nagaland and his wife Smt. Kavitha Acharya with H.J Bhandary, Director, Pilikula Biological Park.



Adoption of Lion by Dr. T.M. Abdul Rahoof, M.D., Sulthan Gold Pvt.Ltd., Mangalore .

Veterinary care:



Vaccination of Felines



Blood collection for routine health check-up



Treatment of Indian Gaur – correction of meta-tarsal fracture



Treatment of skin laceration of King Cobra

Monsoon Preparation:

During monsoon, June to August rainfall is very high in this region. Hence prior to onset of monsoon, work of cleaning the debris all along the compound wall, cutting of dead and other trees which are posing danger to the moats and compound wall are cleared and proper arrangements are made for the free flow of storm water.

Summer Preparation:

During summer seasons specially March to May, weather of this region is sunny and very hot. Hence dried leaf litter spread into adjoining enclosures are removed so as to avoid fire. Water sprinklers are provided in the display enclosure so as to keep the area cool. The roofs of the enclosures are painted with lime and animal house are provide with fan and proper ventilation.



Spraying water in animal house



Providing fan in animal house



Painting lime to roof of animal house.

Precaution for Avian Influenza:

As a part of disease control stringent protocols to prevent the entry of such diseases into the zoo are being followed. Providing a large foot dip at each entry so that even the vehicle coming inside the zoo are properly disinfected, foot dips at the entrance of each enclosure, limiting the contact of zoo collection with wild and other migratory birds



through proper fencing and isolation of water bodies and disinfecting the visitors pathway are the measures adopted to avoid the entry of virus. Strict instructions are given to the keepers regarding the maintenance of the sanitation level at the zoo and are also advised not to rear any birds at their home. Proper quarantine of newly arrived collection and appropriate necropsy of the animals that have died are also done.

Animal acquisition/transfer/exchange:

A.	Animals arriving in the Zoo			
	Species	Number (M:F)	From	Date of Arrival
	Wild Dog	2:2	Indira Gandhi Zoological Park, Visakhapatnam, Andhra Pradesh	12.12.2018
	Painted Stork	2:3	Indira Gandhi Zoological Park, Visakhapatnam, Andhra Pradesh	12.12.2018
	Alexandrine Parakeet	2:3	Indira Gandhi Zoological Park, Visakhapatnam, Andhra Pradesh	12.12.2018
B	Animals going from the Zoo			
	Species	Number (M:F)	Going to	Date of deposition
	Common Langur	1:0	Bannerghatta Biological Park, Bengaluru, Karnataka	07.06.2018
	Golden Jackal	4:4	Bannerghatta Biological Park, Bengaluru, Karnataka	07.06.2018
	Barking Deer	1:2	Bannerghatta Biological Park, Bengaluru, Karnataka	07.06.2018
	Red Jungle Fowl	2:2	Bannerghatta Biological Park, Bengaluru, Karnataka	07.06.2018
	Lesser Whistling Teal	1:1	Bannerghatta Biological Park, Bengaluru, Karnataka	07.06.2018
	Bengal Tiger	2:0	Indira Gandhi Zoological Park, Visakhapatnam, Andhra Pradesh	17.12.2018
	Mugger	1:0	Indira Gandhi Zoological Park, Visakhapatnam, Andhra Pradesh	17.12.2018
	Red Jungle Fowl	0:4	Indira Gandhi Zoological Park, Visakhapatnam, Andhra Pradesh	17.12.2018
	King Cobra	1:1	Arignar Anna Zoological Park, Vandalur, Chennai	16.02.2019
	Whitaker's Boa	2:2	Arignar Anna Zoological Park, Vandalur, Chennai	16.02.2019

	Common Wolf Snake	1:2	Arignar Anna Zoological Park, Vandalur, Chennai	16.02.2019
--	----------------------	-----	----------------------------------------------------	------------

Animal Adoption Details:

Pilikula Biological Park has an animal adoption scheme where general public or institutions can adopt an animal for a specific period of time by paying its maintenance expenses. This amount will be used for the upkeep of the adopted animal like the expense of food, medicine and general maintenance. Certain privileges for the donors are provided as a sign board of donors detail

S.No.	Donor	Amount
1	Sri Pinaki Das, MRPL, Mangalore	20,000.00
2	Sri C Upendra Kamath, Proprietor, Nirmala Travels, Mangalore	5,000.00
3	Sri K Prabhakara Rao, Director(works), MCF, Mangalore	2,00,000.00
4	Sri M N Jagannath, M.D., Dairy Day Classic Ice Cream, Bangalore	1,00,000.00
5	Dr.A.J Shetty, Laxmi Memorial Education Trust, Mangalore	1,00,000.00
6	Sri K R Seetharama, MRPL Township, Mangalore	38,000.00
7	The Managing Director, MESCOM, Mangalore	1,00,000.00
8	Dr. T.M. Abdul Rahoof, M.D., Sulthan Gold Pvt.Ltd., Mangalore	4,00,000.00

Financial Assistance from Central Zoo Authority, New Delhi:

S.No.	Particulars	Amount in lakhs
1	Construction of enclosure for Lion Tailed Macaque	26.10
2	Installation of CCTV cameras	7.50
Total		33.60

Annual Inventory of Animals:

Endangered Species*

Part-I

S.No.	Animal Name	Scientific Name	Opening Stock 01.04.2018				Births			Acquisitions			Disposals			Deaths			Closing Stock 31.03.2019				
			M	F	U	T	M	F	U	M	F	U	M	F	U	M	F	U	M	F	U	T	
Bird																							
1	Eagle White Bellied Sea	<i>Haliaeetus leucogaster</i>	0	0	1	1	0	0	0	0	0	0	0	0	0	0	0	0	0	0	1	1	
2	Fowl Jungle Grey	<i>Gallus sonneratii</i>	1	1	0	2	0	0	0	0	0	0	0	0	0	0	0	0	0	1	1	0	2
3	Peafowl	<i>Pavo cristatus</i>	7	3	0	10	2	1	0	0	0	0	2	0	0	0	0	0	0	7	4	0	11
4	Peafowl White/Leucustic	<i>Pavo cristatus</i>	2	2	0	4	0	0	0	0	0	0	0	0	0	0	0	0	0	2	2	0	4
5	Spoonbill White	<i>Platalea leucorodia</i>	4	1	0	5	0	0	0	0	0	0	0	0	0	1	0	0	3	1	0	4	
6	Vulture White Scavenger	<i>Neophron percnopterus</i>	0	0	1	1	0	0	0	0	0	0	0	0	0	0	0	0	0	0	1	1	
Total Bird			14	7	2	23	2	1	0	0	0	0	2	0	0	1	0	0	13	8	2	23	

Mammal																						
7	Bear Sloth	<i>Ursus ursinus</i>	1	1	0	2	0	0	0	0	0	0	0	0	0	0	0	0	1	1	0	2
8	Black Buck	<i>Antilope cervicapra</i>	19	25	0	44	3	2	0	0	0	0	0	0	0	1	1	0	21	26	0	47
9	Cat Jungle	<i>Felis chaus</i>	3	3	0	6	0	0	0	0	0	0	0	0	0	0	0	0	3	3	0	6
10	Cat Leopard	<i>Prionailurus bengalensis</i>	0	2	0	2	0	0	0	0	0	0	0	0	0	0	0	0	0	2	0	2
11	Civet Common Palm	<i>Paradoxurus hermaphroditus</i>	5	5	0	10	1	2	0	3	2	0	3	2	0	0	0	0	6	7	0	13
12	Civet Indian Small	<i>Viverricula indica</i>	2	1	0	3	0	0	0	0	0	0	0	0	0	1	0	0	1	1	0	2
13	Deer Mouse	<i>Moschiola indica</i>	1	0	0	1	0	0	0	0	0	0	0	0	0	0	0	0	1	0	0	1
14	Dog Wild	<i>Cuon alpinus</i>	0	0	0	0	0	0	0	2	2	0	0	0	0	0	0	0	2	2	0	4
15	Gaur Indian	<i>Bos gaurus</i>	0	0	0	0	0	0	0	1	1	0	0	0	0	0	0	0	1	1	0	2
16	Jackal	<i>Canis aureus</i>	23	16	0	39	2	1	0	0	0	0	7	5	0	1	0	0	17	12	0	29
17	Langur Common	<i>Semnopithecus entellus</i>	2	0	0	2	0	0	0	1	2	0	1	0	0	0	0	0	2	2	0	4
18	Leopard/ Panther	<i>Panthera pardus</i>	4	5	0	9	0	0	0	0	0	0	0	0	0	0	0	0	4	5	0	9
19	Lion Indian	<i>Panthera leo persica</i>	1	1	0	2	0	0	0	0	0	0	0	0	0	0	0	0	1	1	0	2
20	Loris Slender	<i>Loris lydekkerianus</i>	1	0	0	1	0	0	0	0	0	0	0	0	0	0	0	0	1	0	0	1
21	Macaque Bonnet	<i>Macaca radiata</i>	3	3	0	6	0	0	0	0	0	0	0	0	0	0	0	0	3	3	0	6
22	Macaque Lion Tailed	<i>Macaca silenus</i>	1	1	0	2	0	0	0	0	0	0	0	0	0	0	0	0	1	1	0	2

23	Macaque Rhesus	<i>Macaca mulatta</i>	4	1	0	5	0	0	0	1	1	0	0	0	0	0	5	2	0	7		
24	Mongoose Indian Grey	<i>Herpestes edwardsi</i>	5	5	0	10	1	0	0	0	0	0	0	0	0	0	6	5	0	11		
25	Squirrel Flying	<i>Petinomys fuscocapillus</i>	0	1	0	1	0	0	0	1	0	0	0	0	0	0	1	1	0	2		
26	Squirrel Giant Malabar	<i>Ratufa indica</i>	3	2	0	5	0	0	0	0	0	0	0	0	1	0	0	2	2	0	4	
27	Tiger Bengal	<i>Panthera tigris tigris</i>	7	3	0	10	0	0	0	0	0	2	0	0	0	0	5	3	0	8		
Total Mammal			85	75	0	160	7	5	0	9	8	0	13	7	0	4	1	0	84	80	0	164
Reptile																						
28	Cobra Indian	<i>Naja naja</i>	0	0	18	18	0	0	32	0	0	109	0	0	141	0	0	0	0	18	18	
29	Cobra Indian Melenstic	<i>Naja naja</i>	0	0	1	1	0	0	0	0	0	0	0	0	0	0	0	0	0	1	1	
30	Cobra King	<i>Ophiophagus hannah</i>	6	4	0	10	0	0	0	0	12	1	1	2	0	0	0	5	3	10	18	
31	Crocodile Gharial	<i>Gavialis gangeticus</i>	0	0	3	3	0	0	0	0	0	0	0	0	0	0	0	0	3	3		
32	Crocodile Marsh	<i>Crocodylus palustris</i>	1	1	6	8	0	0	0	0	0	0	0	2	0	0	0	1	1	4	6	
33	Monitor Lizard	<i>Varanus bengalensis</i>	0	0	5	5	0	0	0	0	2	0	0	2	0	0	0	0	5	5		
34	Python Indian Rock	<i>Python molurus molurus</i>	0	0	13	13	0	0	58	0	0	62	0	0	120	0	0	0	0	13	13	
35	Python Reticulated	<i>Python reticulatus</i>	2	2	0	4	0	0	0	1	1	0	0	0	0	0	0	3	3	0	6	
36	Snake Keelback Checkered	<i>Xenochrophis piscator</i>	0	0	10	10	0	0	26	0	0	8	0	0	34	0	0	0	0	10	10	
37	Snake Rat	<i>Ptyas mucosus</i>	0	0	21	21	0	0	62	0	0	38	0	0	100	0	0	0	0	21	21	
38	Turtle Indian Soft-Shelled	<i>Lissemys punctata punctata</i>	0	0	13	13	0	0	6	0	0	0	0	0	0	0	0	0	19	19		
39	Turtle Indian Black	<i>Melanochelys trijuga</i>	0	0	115	115	0	0	12	0	0	3	0	0	15	0	0	0	0	115	115	
40	Viper Russells	<i>Vipera russellii</i>	0	0	7	7	0	0	18	0	0	9	0	0	27	0	0	0	0	7	7	
Total Reptile			9	7	212	228	0	0	214	1	1	243	1	1	443	0	0	0	9	7	226	242
Total Animals			108	89	214	411	9	6	214	10	9	243	16	8	443	5	1	0	106	95	228	429

Other Species

Part-II

S.No.	Animal Name	Scientific Name	Opening Stock 01.04.2018				Births			Acquisitions			Disposals			Deaths			Closing Stock 31.03.2019			
			M	F	U	T	M	F	U	M	F	U	M	F	U	M	F	U	M	F	U	T
Bird																						
1	Budgerigar	<i>Melopsittacus undulatus</i>	0	0	58	58	0	0	0	0	0	0	0	0	2	0	0	0	0	56	56	
2	Cockatiel	<i>Nymphicus hollandicus</i>	3	2	0	5	0	0	0	0	0	0	0	0	0	0	0	3	2	0	5	
3	Conure Sun	<i>Aratinga solstitialis</i>	0	1	0	1	0	0	0	0	0	0	0	0	0	0	0	0	1	0	1	
4	Dove Diamond	<i>Geopelia cuneata</i>	0	0	6	6	0	0	0	0	0	0	0	0	0	0	0	0	0	6	6	

5	Duck Caroline/Wood	<i>Aix sponsa</i>	1	1	0	2	0	0	0	0	0	0	0	0	0	0	0	0	1	1	0	2
6	Duck Mallard	<i>Anas platyrhynchos</i>	0	0	9	9	0	0	0	0	0	0	0	0	0	0	0	0	0	0	9	9
7	Duck Mandarin	<i>Aix galericulata</i>	1	1	0	2	0	0	0	0	0	0	0	0	0	0	0	0	1	1	0	2
8	Duck Muscovy	<i>Cairina moschata</i>	6	4	0	10	0	0	0	0	0	0	0	0	0	0	0	0	6	4	0	10
9	Emu	<i>Dromaius novaehollandiae</i>	3	2	0	5	0	0	0	0	0	0	0	0	0	0	0	0	3	2	0	5
10	Finch Zebra	<i>Taeniopygia guttata</i>	0	0	8	8	0	0	0	0	0	0	0	0	0	0	0	0	0	0	8	8
11	Fowl Guneia	<i>Numida meleagris</i>	9	6	0	15	0	0	0	0	0	0	0	0	0	0	0	0	9	6	0	15
12	Fowl Red Jungle	<i>Gallus gallus</i>	22	8	0	30	1	3	0	0	0	0	2	6	0	2	0	0	19	5	0	24
13	Fowl Red Spur	<i>Galloperdix spadicea</i>	1	2	0	3	0	0	0	0	0	0	0	0	0	0	0	0	1	2	0	3
14	Goose	<i>Anser anser</i>	0	0	31	31	0	0	6	0	0	0	0	0	0	0	0	0	0	0	37	37
15	Gull Caspian	<i>Larus cachinnans</i>	0	0	0	0	0	0	0	0	0	1	0	0	0	0	0	0	0	0	1	1
16	Hen White Breasted Water	<i>Amaurornis phoenicurus</i>	1	1	0	2	0	0	0	0	0	0	0	0	0	0	0	0	1	1	0	2
17	Heron Night	<i>Nycticorax nycticorax</i>	0	0	0	0	0	0	0	5	5	0	0	0	0	0	0	0	5	5	0	10
18	Heron Purple	<i>Ardea purpurea</i>	0	0	2	2	0	0	0	0	0	0	0	0	0	0	0	0	0	0	2	2
19	Ibis White	<i>Threskiornis melanocephala</i>	0	0	16	16	0	0	0	0	0	0	0	0	0	1	0	0	0	0	15	15
20	Lovebird Peach Faced	<i>Agapornis roseicollis</i>	0	0	1	1	0	0	0	0	0	0	0	0	0	0	0	0	0	0	1	1
21	Kite Brahminy	<i>Haliastur indus</i>	0	0	3	3	0	0	0	0	0	2	0	0	0	0	0	0	0	0	5	5
22	Kite Pariah/Black	<i>Milvus migrans</i>	0	0	19	19	0	0	0	0	0	2	0	0	5	0	0	0	0	0	16	16
23	Koel	<i>Eudynamys scolopaceus</i>	0	2	0	2	0	0	0	0	0	0	0	0	0	0	0	0	0	2	0	2
24	Macaw Blue and Gold	<i>Ara ararauna</i>	0	1	0	1	0	0	0	0	0	0	0	0	0	1	0	0	0	0	0	0
25	Ostrich	<i>Struthio camelus</i>	2	0	0	2	0	0	0	0	0	0	0	0	0	0	0	0	2	0	0	2
26	Owl Barn	<i>Tyto alba</i>	0	0	10	10	0	0	0	0	0	4	0	0	4	0	0	0	0	0	10	10
27	Owl Bay	<i>Phodilus badius</i>	0	0	1	1	0	0	0	0	0	0	0	0	0	1	0	0	0	0	0	0
28	Owl Brown Fish	<i>Bubo zeylonensis</i>	0	0	3	3	0	0	0	0	0	0	0	0	0	0	0	0	0	0	3	3
29	Owl Brown Wood	<i>Strix leptogrammica</i>	0	0	0	0	0	0	0	0	0	1	0	0	0	0	0	0	0	0	1	1
30	Owl Grey Horned	<i>Bubo bengalensis</i>	0	0	1	1	0	0	0	0	0	0	0	0	0	0	0	0	0	0	1	1
31	Owl Scoups	<i>Otus scops</i>	0	0	2	2	0	0	0	0	0	0	0	0	0	0	0	0	0	0	2	2
32	Parakeet Alexandrine	<i>Psittacula eupatria</i>	3	3	0	6	0	0	0	2	3	0	0	0	0	0	0	0	5	6	0	11
33	Parakeet Blossom Headed	<i>Psittacula cyanocephala</i>	1	1	2	4	0	0	0	0	0	0	0	0	0	0	0	0	1	1	2	4
34	Parakeet Rose Ringed	<i>Psittacula krameri</i>	12	16	0	28	0	0	0	0	0	30	0	0	0	1	1	0	11	15	30	56

35	Parakeet Rose Ringed Grey	<i>Psittacula krameri</i>	0	0	2	2	0	0	0	0	0	0	0	0	0	0	0	0	0	0	2	2
36	Parakeet Rose Ringed Blue	<i>Psittacula krameri</i>	0	0	2	2	0	0	0	0	0	0	0	0	0	0	0	0	0	0	2	2
37	Pelican Spot Billed/Grey	<i>Pelicanus philippensis</i>	1	1	0	2	0	0	0	0	0	0	0	0	0	0	0	1	1	0	0	2
38	Pheasant Lady Amherst	<i>Chrysolophus amherstiae</i>	2	2	0	4	0	0	0	0	0	0	0	0	0	0	0	2	2	0	0	4
39	Pheasant Red Golden	<i>Chrysolophus pictus</i>	3	1	0	4	0	0	0	0	0	0	0	0	0	0	0	3	1	0	0	4
40	Pheasant Ring Necked	<i>Phasianus colchicus</i>	1	1	0	2	0	0	0	0	0	0	0	0	0	0	0	1	1	0	0	2
41	Pheasant Silver	<i>Lophura nycthemera</i>	3	1	0	4	0	0	0	0	0	0	0	0	0	0	0	3	1	0	0	4
42	Pheasant Yellow Golden	<i>Chrysolophus pictus</i>	1	1	0	2	0	0	0	0	0	0	0	0	0	0	0	1	1	0	0	2
43	Pigeon Blue Rock	<i>Columba livia</i>	0	0	8	8	0	0	0	0	0	0	0	0	0	0	0	0	0	0	8	8
44	Pigeon Fantail		0	0	3	3	0	0	0	0	0	5	0	0	0	0	0	0	0	0	8	8
45	Sparrow Java	<i>Padda oryzivora</i>	0	0	5	5	0	0	0	0	0	0	0	0	0	0	0	0	0	0	5	5
46	Stork Painted	<i>Mycteria leucocephala</i>	0	0	4	4	0	0	0	7	8	0	0	0	0	0	0	7	8	4	19	19
47	Teal Ringed	<i>Callonetta leucophrys</i>	1	1	0	2	0	0	0	0	0	0	0	0	0	0	0	1	1	0	0	2
48	Teal Lesser Whistling	<i>Dendrocygna javanica</i>	0	0	13	13	0	0	0	0	0	0	0	2	0	0	0	0	0	0	11	11
Total Bird			77	59	209	345	1	3	6	14	16	45	2	6	11	5	4	0	87	70	245	402

Mammal

49	Deer Barking	<i>Muntiacus muntjak</i>	11	14	0	25	2	3	0	0	0	0	1	2	0	1	0	0	11	15	0	26
50	Deer Sambar	<i>Cervus unicolor</i>	16	17	0	33	1	1	0	0	0	0	0	0	0	1	2	0	16	16	0	32
51	Deer Spotted	<i>Axis axis</i>	17	23	0	40	0	1	0	0	0	0	0	0	0	1	1	0	16	23	0	39
52	Hare Black Naped	<i>Lepus nigricollis</i>	1	1	0	2	0	0	0	0	0	0	0	0	0	0	0	0	1	1	0	2
53	Hippopotamus	<i>Hippopotamus amphibius</i>	1	2	0	3	1	0	0	0	0	0	0	0	0	0	0	2	2	0	0	4
54	Lion Hybrid	<i>Panthera leo</i>	1	2	0	3	0	0	0	0	0	0	0	0	0	1	0	0	0	2	0	2
55	Mongoose Ruddy	<i>Herpestes smithii</i>	1	1	0	2	0	0	0	0	0	0	0	0	0	0	0	0	1	1	0	2
56	Pig Wild	<i>Sus scrofa</i>	7	11	0	18	0	2	0	0	0	0	0	0	0	0	0	7	13	0	0	20
57	Porcupine Indian	<i>Hystrix indica</i>	4	5	0	9	0	0	0	0	0	0	0	0	0	0	0	4	5	0	0	9
Total Mammal			59	76	0	135	4	7	0	0	0	0	1	2	0	4	3	0	58	78	0	136

Reptile

58	Boa Common Sand	<i>Gongylophis conicus</i>	0	0	4	4	0	0	0	0	0	0	0	0	0	0	0	0	0	0	4	4
59	Boa Red Sand	<i>Eryx johnii</i>	0	0	9	9	0	0	0	0	0	0	0	0	0	0	0	0	0	0	9	9
60	Boa Whitaker's	<i>Eryx whitakeri</i>	0	0	12	12	0	0	6	0	0	9	0	0	15	0	0	0	0	0	12	12
61	Caiman Spectacled	<i>Caiman crocodilus</i>	2	2	0	4	0	0	0	0	0	0	0	0	0	0	0	2	2	0	0	4

62	Crocodile African Dwarf	<i>Orsterlaemess tetraspis</i>	0	0	1	1	0	0	0	0	0	0	0	0	0	0	0	0	0	0	1	1
63	Crocodile Nile	<i>Crocodylus niloticus</i>	0	0	3	3	0	0	0	0	0	0	0	0	0	0	0	0	0	0	3	3
64	Crocodile Siamensis	<i>Crocodylus siamensis</i>	0	0	5	5	0	0	0	0	0	0	0	0	0	0	0	0	0	0	5	5
65	Krait Common Indian	<i>Bungarus caeruleus</i>	0	0	2	2	0	0	0	0	0	1	0	0	1	0	0	0	0	0	2	2
66	Racer Banded	<i>Argyrogena fasciolata</i>	0	0	2	2	0	0	0	0	0	0	0	0	0	0	0	0	0	0	2	2
67	Snake Bronzeback Tree	<i>Dendrelaphis tristis</i>	0	0	8	8	0	0	0	0	0	2	0	0	2	0	0	0	0	0	8	8
68	Snake Ceylon Cat	<i>Boiga ceylonensis</i>	0	0	5	5	0	0	0	0	0	1	0	0	1	0	0	0	0	0	5	5
69	Snake Common Wolf	<i>Lycodon aulicus</i>	0	0	5	5	0	0	4	0	0	4	0	0	8	0	0	0	0	0	5	5
70	Snake Green Vine	<i>Ahaetulla nasuta</i>	0	0	5	5	0	0	3	0	0	5	0	0	8	0	0	0	0	0	5	5
71	Snake Keelback Striped	<i>Amphiesma stolatum</i>	0	0	10	10	0	0	6	0	0	7	0	0	13	0	0	0	0	0	10	10
72	Snake Montane Trinket	<i>Coelognathus helena monticollaris</i>	0	0	5	5	0	0	12	0	0	4	0	0	16	0	0	0	0	0	5	5
73	Terrapin Red Eared	<i>Trachemys scripta</i>	0	0	36	36	0	0	0	0	0	0	0	0	0	0	0	0	0	0	36	36
74	Tortoise Indian Star	<i>Geochelone elegans</i>	0	0	41	41	0	0	0	0	0	0	0	0	0	1	2	0	0	0	38	38
75	Turtle Giant Soft shell	<i>Pelochelys cantorii</i>	1	0	0	1	0	0	0	0	0	0	0	0	0	0	0	0	1	0	0	1
76	Viper Hump Nosed Pit	<i>Hypnale hypnale</i>	0	0	6	6	0	0	6	0	0	1	0	0	7	0	0	0	0	0	6	6
77	Viper Malabar Pit	<i>Trimeresurus malabaricus</i>	0	0	2	2	0	0	0	0	0	1	0	0	1	0	0	0	0	0	2	2
Total Reptile			3	2	161	166	0	0	37	0	0	35	0	0	72	1	2	0	3	2	158	163
Pisces of Western Ghats																						
78	Hunase / Murangi	<i>Lepidocephalus thermalis</i>	0	0	5	5	0	0	0	0	0	0	0	0	0	0	0	0	0	0	5	5
79	Kijan	<i>Puntius filamentosus</i>	0	0	12	12	0	0	0	0	0	0	0	0	0	0	0	0	0	0	12	12
80	Kol kijan	<i>Rasbora daniconius</i>	0	0	8	8	0	0	0	0	0	0	0	0	0	0	0	0	0	0	8	8
81	Kuchhu	<i>Channa striatus</i>	0	0	9	9	0	0	0	0	0	0	0	0	0	0	0	0	0	0	9	9
82	Madanji / Korava	<i>Chenna punctatus</i>	0	0	6	6	0	0	0	0	0	0	0	0	0	0	0	0	0	0	6	6
83	Moogumalli / Kudian	<i>Aplocheilus lineatus</i>	0	0	8	8	0	0	0	0	0	0	0	0	0	0	0	0	0	0	8	8
84	Mugudu / Magur	<i>Clarius batrachus</i>	0	0	14	14	0	0	0	0	0	0	0	0	0	0	0	0	0	0	14	14
85	Mulvel / Kuri meenu	<i>Labeo nigriscens</i>	0	0	2	2	0	0	0	0	0	0	0	0	0	0	0	0	0	0	2	2
Total Fish			0	0	64	64	0	0	0	0	0	0	0	0	0	0	0	0	0	0	64	64
Total Animals			139	137	434	710	5	10	43	14	16	80	3	8	83	10	9	0	148	150	467	765

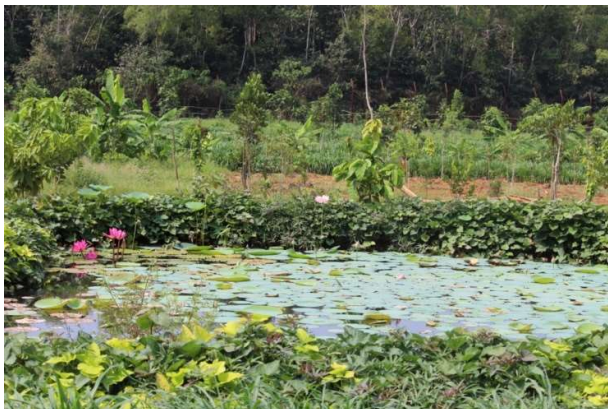
Mortality of Animals:

S.No.	Animal Name	Scientific Name	Sex	Date of Death	Reason of Death
Birds					
1	Spoonbill White	<i>Platalea leucorodia</i>	Male	01.03.2019	Shock due to apshyxia.
2	Budgerigar	<i>Melopsittacus undulatus</i>	Male	24.12.2018	Pneumonia.
3	Budgerigar	<i>Melopsittacus undulatus</i>	Male	22.03.2019	Enteritis.
4	Fowl Red Jungle	<i>Gallus gallus</i>	Male	29.09.2018	Foreign body obstruction.
5	Fowl Red Jungle	<i>Gallus gallus</i>	Male	04.01.2018	Infighting
6	Ibis White	<i>Threskiornis melanocephala</i>	Female	21.11.2018	Egg yolk peritonitis.
7	Macaw Blue and Gold	<i>Ara ararauna</i>	Female	19.05.2018	Oopheritis.
8	Owl Bay	<i>Phodilus badius</i>	Female	17.08.2018	Enteritis.
Mammal					
9	Black Buck	<i>Antilope cervicapra</i>	Male	09.05.2018	Infighting
10	Black Buck	<i>Antilope cervicapra</i>	Female	16.06.2018	Dystocia.
11	Civet Indian Small	<i>Viverricula indica</i>	Male	04.11.2018	Senility.
12	Deer Barking	<i>Muntiacus muntjak</i>	Male	07.10.2018	Infighting
13	Deer Sambar	<i>Cervus unicolor</i>	Female	12.09.2018	Enteritis.
14	Deer Sambar	<i>Cervus unicolor</i>	Male	15.09.2018	Senility.
15	Deer Sambar	<i>Cervus unicolor</i>	Female	24.02.2019	Impaction.
16	Deer Spotted	<i>Axis axis</i>	Male	03.05.2019	Infighting
17	Deer Spotted	<i>Axis axis</i>	Female	07.12.2018	Acute capture myopathy.
18	Jackal	<i>Canis aureus</i>	Male	12.06.2018	Infighting
19	Lion Hybrid	<i>Panthera leo</i>	Male	14.07.2018	Respiratory failure.
20	Squirrel Giant Malabar	<i>Ratufa indica</i>	Male	04.10.2018	Bacterial sepsis.
Reptile					
21	Crocodile Siamensis	<i>Crocodylus siamensis</i>	Female	29.07.2018	Senility.
22	Tortoise Indian Star	<i>Geochelone elegans</i>	Male	22.06.2018	Urolithiasis.
23	Tortoise Indian Star	<i>Geochelone elegans</i>	Male	16.08.2018	Urolithiasis.
24	Tortoise Indian Star	<i>Geochelone elegans</i>	Female	04.01.2019	Oopheritis.

List of free living wild animals within the zoo premises:

Mammals	Birds	Reptiles
Jungle Cat	Little Cormorant	Indian Cobra
Common Palm Civet	White-necked Stork	Monitor Lizard
Jackal	Pond Heron	Indian Rock Python
Indian Grey Mongoose	Night Heron	Checkered Keelback
Black Naped Hare	Cattle Egret	Rat Snake
Indian Porcupine	Common Pariah Kite	Indian Black Turtle
	Brahminy Kite	Russell's Viper
	Common Peafowl	Whitaker's Boa
	Blue Rock Pigeon	Common Indian Krait
	Roseringed Parakeet	Bronzeback Tree Snake

	<p>Crow-Pheasant Indian Drongo Cuckoo Koel Bran or Screech Owl Whitebreasted Kingfisher Small Green Bee-Eater Lesser Goldenbacked Woodpecker Large Green Barbet Indian Pitta Golden Oriole Racket-Tailed Drongo Grey or Ashy Drongo Whitebellied Drongo Indian Myna Tree pie House crow Iora Goldfronted Chloropsis Redwhiskered Bulbul Jungle Babbler Paradise Flycatcher Tailor Bird Magpie-Robin Yellowheaded Wagtail Purple Sunbird House Sparrow Blackheaded Munia Spotted Owlet Scops Owl</p>	<p>Painted Bronzeback Tree Snake Common Wolf Snake Green Vine Snake Stripped Keelback Snake Montane Trinket Snake Common Trinket Snake</p>
--	------------------------------------------------------------------------------------------------------------------------------------------------------------------------------------------------------------------------------------------------------------------------------------------------------------------------------------------------------------------------------------------------------------------------------------------------------------------------------------------------------------------------------------------------------------------------------------------------------------------------------------------------------	--------------------------------------------------------------------------------------------------------------------------------------------------------------------------



Development of Green Belt



Development of aquatic pond