

## 1. Director's Note

I am pleased to present the Annual Report of the National Zoological Park, New Delhi for the FY - 2022-23. The present day National Zoological Park, New Delhi made its humble beginning as the Delhi Zoological Park with 212 acres of area, in the year 1959. The main objectives of the National Zoological Park are to create awareness amongst the people about the protection of the endangered wildlife, Conservation Education, Research and provide a healthy and inexpensive recreation to people of Delhi and its neighbouring areas.

National Zoological Park is contributing a lot to the cause of preservation, research, breeding and education of endangered species.

NZP organized several programmes in the zoo like conservation awareness programs, awareness campaign etc. Like every year, we celebrated the Van Mahotsav this year too, in which we planted hundreds of saplings in different areas of the zoo premises.

I appreciate the hard work of zoo employees, their cooperation and participation of all sections for compilation of this Annual Report.

I also appreciate Dr. Manoj Kumar, Curator (Edn.) for compilation of the Annual Report carried out meticulously.

Smt. Akanksha Mahajan, IFS  
Director  
National Zoological Park,



## 2. History of the Zoo

The National Zoological Park, New Delhi is one of the premier zoos of the country. It is popular destinations in the Delhi - NCR discharging its responsibility to help people appreciate, understand nature and wildlife better. The park is now more than **Sixty years** old and it's about time to review the facilities and services provided to general public. The National zoological Park should be a top of the mind educational and recreational facility in the region. It is in this context the vision and mission have been redefined as under:

In India, at the time of independence, there was no zoo in Delhi. The 'Indian Board of Wildlife (now National Board for Wildlife) which was constituted in 1951 laid stress on establishment of zoos in larger cities of the country in its first meeting in 1952.

Accordingly, an ad-hoc committee with some prominent nature lovers of Delhi, including Smt. Indira Gandhi, was constituted under the Chairmanship of Chief Commissioner, to formulate a proposal for establishment of Zoological Park for Delhi. Mr. E.F. Bowring Welsh, Secretary of the Society for Prevention of Cruelty to Animals was appointed as its Secretary. The committee met on 9th September, 1953 and approved the site between Purana Quila and Humayun's Tomb for the purpose. It also prepared an outline of the project.

Central Government was to provide necessary finance and get the project executed through Delhi state Govt., however express and its inability to undertake the scheme and suggested that the park be developed by Central Government, and shall be handed over to them in running condition to the Delhi Government. Since wildlife was managed by the Forest Department, first implementing official was drawn from Forest Service. Shri N.D. Bachkheti, an Indian Forest Service Officer of Uttar Pradesh was appointed as Superintendent on 1st October 1955.

Major Weinmann, the then Director of Ceylon Zoological Garden, Colombo was invited to help draw a detailed plan for development of the Park. He submitted a report along with a preliminary plan. As he was not available for continued consultations, it was decided to seek the services of Mr. Carl Hagenbeck, owner of the famous Animal Park at Hamburg, West Germany, who gave the idea of open moat enclosures.



The Park was formally inaugurated on 1st November, 1959 by Shri Punjab Rao Deshmukh, Hon'ble Minister, Government of India. This Park was initially known as Delhi Zoo. In the year 1982 it was given the status of the National Zoological Park with the idea of it being the model zoo of the country.

Here at the National Zoological Park, birds and animals live in an environment that in many ways resemble their natural habitat. The National Zoological Park not only provides a home for endangered species, but also helps them to breed in captivity. Eventually they may once again thrive in the wild.

### **3. Vision**

In twenty-year, time of Master Plan period the visitor experience will be far more rewarding and enriching than it is today. Quality of animal care exhibits, conservation education and sustainable management practices will take the zoo to the next level. The 'National Zoological Park' (NZP) will truly be the Nation's Zoo in terms of state of art facilities and management practices. It will be role model in the country for other zoos to seek guidance and inspiration.

NZP shall also endeavour to breed endangered species through organized breeding programs for the purpose of display, exchange and rehabilitation in wild. NZP will be a top of the mind educational and recreational facility in the region.

### **4. Mission**

- (a) To generate awareness and compassion in the society towards wildlife and to garner their support for the national conservation effort.
- (b) To play an effective role in reducing man animal conflicts in urban landscape.
- (c) To play an effective role in species preservation.

### **5. Objectives**

Objective of the park was to provide a healthy and inexpensive recreation to people of Delhi and its neighbouring areas. It was further realized that, conservation education and research on Wild animals can best be imparted through the zoo.



## About us

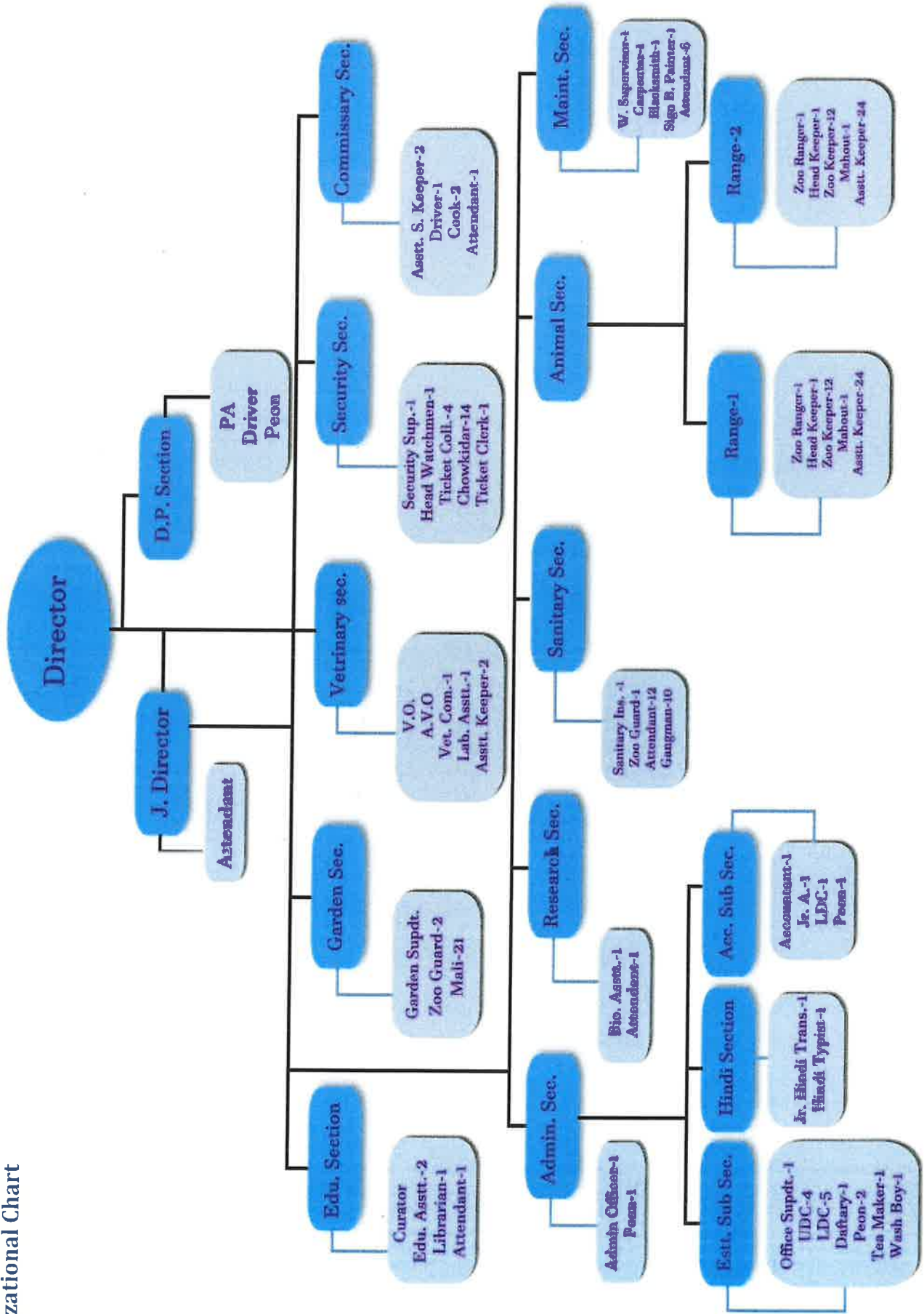
National Zoological Park is a subordinate office under the Ministry of Environment, Forest & Climate Change, Govt. of India.

Name:	National Zoological Park		
Year of Establishments:	1959		
Address:	National Zoological Park, Mathura Road, Near Sunder Nagar, New Delhi - 110003		
Telephone:	+91 11 24358500, +91 11 24359825		
Fax:	+91 11 24352408		
E-mail:	<a href="mailto:nzpnnewdelhi@gmail.com">nzpnnewdelhi@gmail.com</a> , <a href="mailto:nzpzoo-cza@nic.in">nzpzoo-cza@nic.in</a>		
Website:	<a href="http://www.nzpnnewdelhi.gov.in">http://www.nzpnnewdelhi.gov.in</a>		
Distance from nearest	Airport:	IGI Airport Delhi	
	Railway:	H. Nizamuddin Rly. station	3.5 Kms
	Bus Stand	Delhi Zoo	300 Mtrs
Recognition Valid upto (Date)	19 <sup>th</sup> August, 2023		
Category of zoo	Large Zoo		
Area (in Acres)	188.62		
Number of Visitors (Financial Year)	Indians:		
	Foreigners:		
	Total:		

Visitors' Facilities Available in Zoo	Battery operated trolley, Dustbins, Parking Facilities, Drinking Water Points, Washrooms, Cloakroom, Signages, Resting facilities.
Weekly Closure Day of the Zoo	Every Friday
<b>Management Personnel of the Zoo</b>	
Name with designation of the Officer in-charge	Akanksha Mahajan Director, National Zoological Park.
Name of the Veterinary Officer	Dr. Abhijit Bhawal
Name of the Curator	Dr. Manoj Kumar, Curator (Edn.)
Name of the Administration Officer	Shri Rajinder Kumar
Name of the Garden Superintendent	Shri Ravinder Kumar
Name of Office Superintendent	Smt. Devika
Name of the Security Supervisor	Shri Rohit Kumar
Name of the Zoo Ranger	Shri Saurabh Vashisth
Name of the Work Supervisor	Shri Rajneesh Kr. Pandey
Name of the Lab Assistant	Shri M.A. Polouse

Name of the Compounder	Shri Rakesh Sharma
<b>Owner / Operator of the Zoo</b>	
Name of the Operator	<b>Secretary, MoEF&amp; CC</b>
Address of the Operator	Ministry of Environment, Forest & Climate Change, Indira Parayavaran Bhawan, Jor Bagh, New Delhi - 110003
Contact details / Phone number of Operator	+9111-24695262
E-mail address of Operator	secy-moef@nic.in

# 7. Organizational Chart



## 8. Human Resource of National Zoological Park as on 31<sup>st</sup> March, 2023

S. No.	Designation	No. of Sanctioned Post	No. Of Incumbent Post
1.	Director	1	1
2.	Jt. Director	1	1
3.	Veterinary Officer	1	1
4.	Asstt. Veterinary Officer	1	1
5.	Curator (Education)	1	1
6.	Administrative Officer	1	1
7.	Garden Superintendent	1	--
8.	Accountant	1	--
9.	Office Superintendent	1	1
10.	Biological Assistant	1	--
11.	Jr. Hindi Translator	1	--
12.	Security Supervisor	1	1
13.	Zoo Ranger	2	1
14.	Work Supervisor	1	1
15.	Education Assistant	2	--
16.	Sanitary Inspector	1	--
17.	Jr. Accountant	1	--
18.	UDC/ASK	7	4
19.	Stenographer	1	--
20.	Laboratory Asstt.	1	--
21.	LDC/TC	8	4
22.	Hindi Typist	1	1
23.	Black Smith	1	1
24.	Carpenter	1	1
25.	Sign. Board Painter	1	1
26.	Head Zoo Keeper	2	2

27.	Vet. Compounder	1	1
28.	Staff Car Driver	1	1
29.	Van Driver	1	--
30.	Daftry	1	--
31.	Peon	3	--
32.	Head Watchman	1	--
33.	Ticket Collector	4	--
34.	Zoo Keeper	24	--
35.	Zoo-Guard	2	2
36.	Mahout	3	--
37.	Asstt. Keeper	48	18
38.	Mali	21	2
39.	Chowkidar	14	--
40.	Attendant	22	7
41.	Peon-cum-Attendant	1	--
42.	Gangman	10	5
43.	Cook/Food distributor	2	--
44.	Tea Maker	1	--
45.	Wash Boy	1	--
	<b>Total</b>	<b>203</b>	<b>60</b>

Zoo Advisory Committee –

**Date of reconstitution: October 17, 2022**

**Members**

<b>1</b>	<b>Additional Director General of Forest (PT), MoEF&amp;CC</b>	<b>Chairman</b>
<b>2</b>	<b>Member Secretary, MS, CZA</b>	<b>Vice Chairman</b>
<b>3</b>	<b>Inspector General of Forest (PE), MoEF&amp;CC</b>	<b>Member</b>
<b>4</b>	<b>Commissioner, South Municipal Corporation of Delhi</b>	<b>Member</b>
<b>5</b>	<b>Chief Engineer, Civil Construction Unit, MoEF&amp;CC</b>	<b>Member</b>
<b>6</b>	<b>Director, Indian Veterinary Research Institute, Izzatnagar</b>	<b>Member</b>
<b>7</b>	<b>Director, Wildlife Institute of India, Dehradun</b>	<b>Member</b>
<b>10</b>	<b>Director (IFD), MoEF&amp;CC</b>	<b>Member</b>
<b>11</b>	<b>Shi B.S. Bonal, IFS (Retired)</b>	<b>Member</b>
<b>12</b>	<b>Shri P.C. Tyagi, IFS (Retired), Senior Fellow, WII</b>	<b>Member</b>
<b>13</b>	<b>Additional Director, WCCB</b>	<b>Member</b>
<b>14</b>	<b>Dr. Illeyraja, Veterinarian, Wildlife SOS</b>	<b>Member</b>
<b>15</b>	<b>Shri Himanshu Malhotra, Multi Media Specialist</b>	<b>Member</b>
<b>16</b>	<b>Director, National Zoological Park, New Delhi</b>	<b>Member Secretary</b>

**Zoo Advisory Committee meeting held on 07<sup>th</sup> November, 2022.**

## 12. Statement of income and expenditure of the Zoo

### Visitors Flow:

Total Visitor's numbers during FY -2022-23 of National Zoological Park, New Delhi were 20,46,639.

### Revenue Collection

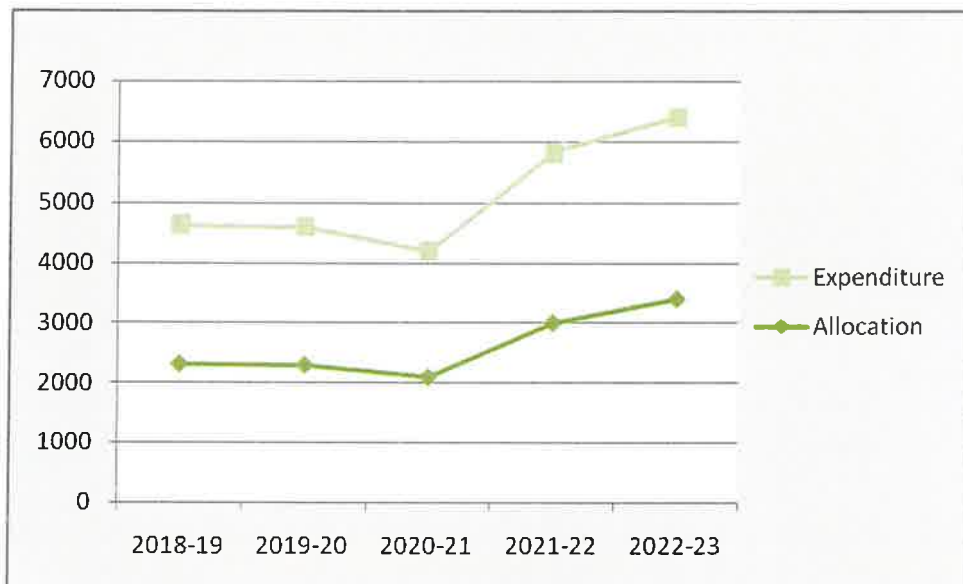
Collection of Revenue 15,34,93,060 during the FY - 2022-23.

Licence Fee: 2.5 cr.

### Budget Allocation

Allocation of Budget increased 34 Cr. during the year (2022-23).

Expenditure incurred 30 Cr. during the year (2022-23).



# Vaccination Schedule of Animals

S.No.	Species	Disease vaccinated for	Name of the Vaccine and dosage/ quantity used	Periodicity	Remarks
1.	Gaur	a) FMD (foot and mouth disease)	Raksha OVAC	Annual	Done
		b) Rabies	Raksharab		
2.	Lion	C.D. (canine distemper)	Distemper Vaccine (Live Canarypox Vector)	Annual	Done
		Rabies	Raksharab		
3.	Tiger	C.D. (canine distemper)	Distemper Vaccine (Live Canarypox Vector)	Annual	Done
		Rabies	Raksharab		
4.	Leopard	C.D. (canine distemper)	Distemper Vaccine (Live Canarypox Vector)	Annual	Done
		Rabies	Raksharab		
5.	Jaguar	C.D. (canine distemper)	Distemper Vaccine (Live Canarypox Vector)	Annual	Done
		Rabies	Raksharab		
6.	Wolf	Rabies	Raksharab	Annual	Done
7.	Hyena	Rabies	Raksharab	Annual	Done
8.	Jackal	Rabies	Raksharab	Annual	Done
9.	Wild Cat	Rabies	Raksharab	Annual	Done
10.	C. palm civet	Rabies	Raksharab	Annual	Done
11.	Small civet	Rabies	Raksharab	Annual	Done
12.	Sloth Bear	Rabies	Raksharab	Annual	Done
13.	Himalayan Black Bear	Rabies	Raksharab	Annual	Done
14.	Rhino	Rabies	Raksharab	Annual	Done
15.	Himadryas Baboon	Rabies	Raksharab	Annual	Done
16.	Elephant	Rabies	Raksharab	Annual	Done
17.	Grey Langur	Rabies	Raksharab	Annual	Done
18.	Lories	Rabies	Raksharab	Annual	Done

## De-worming Schedule of animals (Herbivores)

S.No.	Species	Drug used	Month
1.	Nilgai	Fenbendazole/Vermectin	Quarterly (January May September)
2.	Hog Deer	Fenbendazole/Albendazole	Quarterly (January May September)
3.	Sambar	Fenbendazole/Vermectin	Quarterly (January May September)
4.	Sikka Deer	Fenbendazole/Albendazole	Quarterly (January May September)
5.	Gaur	Fenbendazole/ Vermectin	Quarterly (January May September)
6.	Black Buck	Fenbendazole/Albendazole	Quarterly (January May September)
7.	Spotted Deer	Fenbendazole/ vermectin/ Albendazole	Quarterly (January May September)
8.	Thamin/Sanghai Deer	Fenbendazole/Albendazole  vermectin	Quarterly (January May September)
9.	Elephant	Fenbendazole  vermectin	Quarterly (January May September)
10.	Goral	Fenbendazole/Albendazole  vermectin	Quarterly (January May September)
11.	Barking Deer	Fenbendazole/Albendazole  vermectin	Quarterly (January May September)
12.	Rhinoceros	Fenbendazole/Albendazole	Quarterly (January May September)
13.	Hippopotamus	Fenbendazole   vermectin	Quarterly (January May September)
14.	Swamp Deer	Fenbendazole/with Albendazole  vermectin	Quarterly (January May September)
15.	Chowsingha		Quarterly (January May September)
16.	Himalayan Black Bear	Fenbendazole/Albendazole	Quarterly (January May September)
17.	Sloth Bear	Fenbendazole/Albendazole	Quarterly (January May September)

## De-worming Schedule of animals (Carnivores)

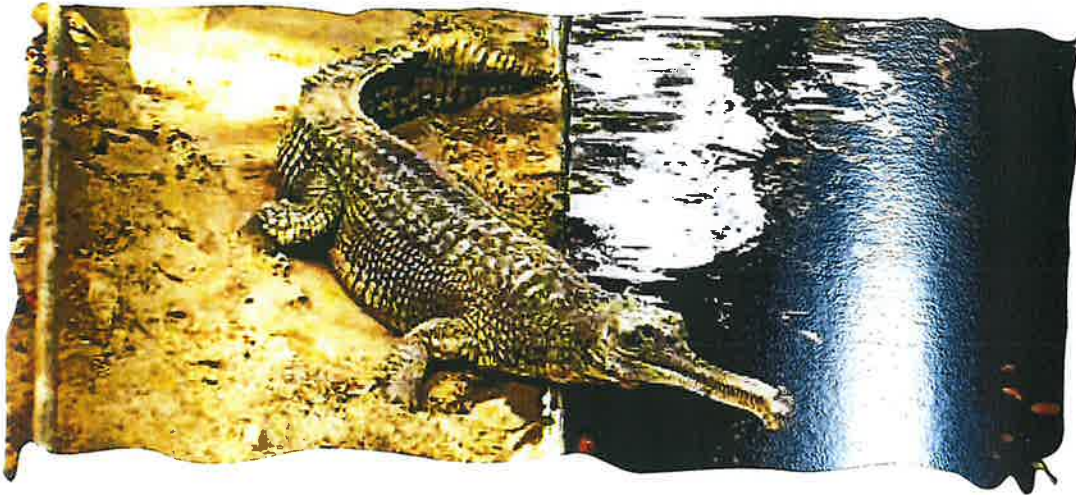
S.No.	Species	Drug used	Month
1.	Lion	Fenbendazole/ Albendazole Ivermectin/ Albendazole	Quarterly (January May September)
2.	Tiger	Fenbendazole/with Albendazole	Quarterly (January May September)
3.	Jaguar	Fenbendazole/ with Albendazole	Quarterly (January May September)
4.	Leopard	Fenbendazole/ with Albendazole	Quarterly (January May September)
5.	Jackal	Fenbendazole/ with Albendazole	Quarterly (January May September)
6.	Fox	Fenbendazole/ with Albendazole	Quarterly (January May September)
7.	Wild Cat	Fenbendazole/ with Albendazole	Quarterly (January May September)
8.	C. Palm Civet	Fenbendazole/ with Albendazole	Quarterly (January May September)
9.	Small Civet	Fenbendazole/ with Albendazole	Quarterly (January May September)
10.	Hyena	Fenbendazole/ with Albendazole	Quarterly (January May September)
11.	Wolf	Fenbendazole/ with Albendazole	Quarterly (January May September)

## De-worming Schedule of animals (Birds)

S.No.	Species	Drug used	Month
1.	EMU	Fenbendazole, Albendazole	Quarterly (January May September)
2.	Rhea	Fenbendazole, Albendazole	Quarterly (January May September)
3.	Black Swan	Fenbendazole, Albendazole	Quarterly (January May September)
4.	Bird group	Fenbendazole, Albendazole	Quarterly (January May September)

## De-worming Schedule of animals (Primates)

S.No.	Species	Drug used	Month
1.	Lion Tail Macaque	Fenbendazole with Albendazole	Quarterly (January May September)
2.	Bonnet monkey	Fenbendazole with Albendazole	Quarterly (January May September)
3.	Langur Grey	Fenbendazole with Albendazole	Quarterly (January May September)
4.	Himadrayas Baboon	Fenbendazole with Albendazole	Quarterly (January May September)
5.	Rhesus Monkey	Fenbendazole with Albendazole	Quarterly (January May September)



## De-worming Schedule of animals (Reptiles)

S.No.	Species	Drug used	Month
1.	Python	Fenbendazole with Albendazole	Quarterly (January May September)
2.	Cobra	Fenbendazole with Albendazole	Quarterly (January May September)
3.	Rat Snake	Fenbendazole with Albendazole	Quarterly (January May September)
4.	Diadem Snake	Fenbendazole with Albendazole	Quarterly (January May September)
5.	Tortoise	Fenbendazole with Albendazole	Quarterly (January May September)

## Disinfection Schedule

S.No.	Species	Types of enclosure	Disinfectant used and method	Frequency of disinfection
1	Herbivores, Carnivores, Reptiles	All enclosures	Potassium permanganate sol.	Daily (Footbath as well as in tyre bath)
2	Herbivores, Carnivores, Reptiles	All enclosures	VirkonS	Daily (Footbath as well as in tyre bath)



## Yearly Schedule of Dengue, Fly & Rat Control

S.N.	Months	Fly Control	Fly Trap	Bygone/Finite spray	Rat	Abate	Lime powder & Bleaching powder	Virkons & Sodium Hypochlorite (Naocl)	Malaria oil/ Bacticide	Fogging Spray
1	Jan.	—	—	—	Every day throughout the year	—	Twice in a month	Daily	—	—
2	Feb.	—	—	Once in a month	do	—	do	do	—	—
3	March	Everyday	Twice in a month	Twice in a week	do	Once in a month	do	do	Twice in a month	Once in a month
4	April	Twice in a week	do	do	do	Thrice in a month	do	do	do	do
5	May	weekly	do	do	do	Thrice in a month	do	do	do	do
6	June	Twice in a week	Once in a month	Once in a month	do	Thrice in a month	do	do	do	—
7	July	weekly	Twice in a month	do	do	Twice in a month	do	do	Thrice in a month	do
8	August	Twice in a week	do	Twice in a month	do	do	do	do	Twice in a month	_do_
9	Sept.	Everyday	do	do	do	do	do	do	do	—
10	October	Everyday	Twice in a month	Once in a month	do	—	do	do	do	—
11	Nov.	—	—	—	do	—	do	do	—	—
12	Dec.	—	—	—	do	—	do	do	—	—

Note: Lime Powder & Bleaching powder also used as disinfectant around the toilet, wet areas, roadside etc.

### 13. Daily Feed Schedule of animals

S.N.	SPECIES	FEED ITEM	QUANTITY PER ANIMAL		DAY OF FASTING
			WINTER (OCTOBER TO MARCH)	SUMMER (APRIL TO SEPTEMBER)	
1.	HORNBILL COMMON GREY	TOMATO	0.100 KG.	0.100 KG.	NO
		PAPAYA	0.200 KG.	0.200 KG.	
		BANANA	0.750 KG.	0.750 KG.	
		KEEMA BASEN	0.100 KG.	0.100 KG.	
		EGG BOILED	1 NO.	1 NO.	
2.	HORNBILL GREAT INDIAN/ GREAT PIED	TOMATO	0.250 KG.	0.250 KG.	NO
		PAPAYA	0.250 KG.	0.250 KG.	
		BANANA	1.500 KG.	1.500 KG.	
		KEEMA BASEN	0.300 KG.	0.300 KG.	
		EGG BOILED	2 NO.	2 NO.	
3.	PEAFOWL	GREEN VEG. LEAVES	0.050 KG.	0.050 KG.	NO
		MIXED DANA	0.100 KG.	0.100 KG.	
		BREAD	0.025 KG.	0.025 KG.	
		GARLIC	0.006 KG.	0.006 KG.	
		ONION	0.006 KG.	0.006 KG.	
		KEEMA BASEN	0.100 KG.	0.100 KG.	
4.	PHEASANT KALIJ	GREEN VEG. LEAVES	0.020 KG.	0.020 KG.	NO
		MIXED DANA	0.100 KG.	0.100 KG.	
		BREAD	0.010 KG.	0.010 KG.	
		GARLIC	0.006 KG.	0.006 KG.	
		ONION	0.006 KG.	0.006 KG.	
		EGG BOILED	½ NO.	½ NO.	
		BHUNA GRAM SATTU	0.010 KG.	0.010 KG.	
		SWEET LIME/ ORANGE	0.020 KG.	0.020 KG.	
5.	SPOONBILL WHITE	FISH DEAD (2" TO 4")	0.250 KG.	0.250 KG.	NO
		KEEMA BASEN	0.100 KG.	0.100 KG.	
6.	VULTURE SCAVENGER	B.C. MEAT	0.500 KG.	0.500 KG.	NO B.C. MEAT – ON FRIDAY
7.	ANTELOPE FOUR HORNED	GREEN FODDER	2.000 KG.	2.000 KG.	NO
		TREE FODDER	2.000 KG.	2.000 KG.	
		MASH	0.500 KG.	0.500 KG.	
		AMLA GREEN	0.050 KG.	0.000 KG.	
		GRAM SOAKED	0.250 KG.	0.250 KG.	
8.	BEAR HIMALAYAN BLACK	BREAD	2.000 KG.	0.000 KG.	
		RICE	0.000 KG.	1.000 KG.	
		GUR (JAGGARY)	0.050 KG.	0.000 KG.	
		MILK	0.500 KG.	0.500 KG.	

		BANANA	1.050 KG.	1.050 KG.	NO
		CUCUMBER/CARROT	0.250 KG.	0.250 KG.	
		POTATO/SWEET POTATO	0.250 KG.	0.250 KG.	
		MELON/PEERS	0.000 KG.	0.500 KG.	
		GUAVA/CHIKU	0.500 KG.	0.000 KG.	
		WATER MELON/BHUTTA GREEN/SINGHARA	0.000 KG.	0.500 KG.	
		BEET ROOT/BER	0.500 KG.	0.000 KG.	
		BAIL FRUIT (APR-JUN)	0.000 KG.	0.250 KG.	
9.	BEAR SLOTH	BREAD	1.000 KG.	0.000 KG.	NO
		RICE	0.000 KG.	0.500 KG.	
		GUR (JAGGARY)	0.050 KG.	0.000 KG.	
		MILK	0.500 KG.	0.500 KG.	
		BANANA	0.750 KG.	0.750 KG.	
		CUCUMBER/CARROT	0.250 KG.	0.250 KG.	
		POTATO/SWEET POTATO	0.250 KG.	0.250 KG.	
		MELON/PEERS	0.000 KG.	0.500 KG.	
		GUAVA/CHIKU	0.500 KG.	0.000 KG.	
		WATER MELON/BHUTTA GREEN/SINGHARA	0.000 KG.	0.500 KG.	
		BEET ROOT/BER	0.500 KG.	0.000 KG.	
		BEL FRUIT (APRIL TO JUNE)	0.000 KG.	0.250 KG.	
10.	BLACK BUCK (KRISHNA MRIG)	GREEN FODDER	2.000 KG.	2.000 KG.	NO
		TREE FODDER	0.500 KG.	0.500 KG.	
		MASH	0.500 KG.	0.500 KG.	
		AMLA GREEN	0.050 KG.	0.000 KG.	
11.	BLACK BUCK (ALBINO)	GREEN FODDER	2.000 KG.	2.000 KG.	NO
		TREE FODDER	0.500 KG.	0.500 KG.	
		MASH	0.500 KG.	0.500 KG.	
		AMLA GREEN	0.050 KG.	0.000 KG.	
12.	CAT JUNGLE	FOWL (ALIVE OF 2 TO 2.5 KG.)	1NO.	1NO.	NO

13.	CIVET COMMON PALM	BREAD	0.100 KG.	0.000 KG.	NO
		RICE	0.000 KG.	0.050 KG.	
		MILK	0.100 KG.	0.100 KG.	
		EGG BOILED	1NO.	1NO.	
		BANANA	0.300 KG.	0.300 KG.	
		PAPAYA	0.200 KG.	0.200 KG.	
		MELON/PEERS	0.000 KG.	0.100 KG.	
		GUAVA/CHIKU	0.100 KG.	0.000 KG.	
14.	CIVET INDIAN SMALL	BREAD	0.100 KG.	0.000 KG.	NO
		RICE	0.000 KG.	0.050 KG.	
		MILK	0.100 KG.	0.100 KG.	
		EGG BOILED	1NO.	1NO.	
		BANANA	0.150 KG.	0.150 KG.	
		APPLE	0.150 KG.	0.150 KG.	
15.	DEER BROW-ANTLERED (SANGAI)	GREEN FODDER	4.000 KG.	4.000 KG.	NO
		TREE FODDER	0.500 KG.	0.500 KG.	
		MASH	1.000 KG.	1.000 KG.	
		AMLA GREEN	0.050 KG.	0.000 KG.	
16.	DEER SWAMP	GREEN FODDER	4.000 KG.	4.000 KG.	NO
		TREE FODDER	0.500 KG.	0.500 KG.	
		MASH	2.000 KG.	2.000 KG.	
		AMLA GREEN	0.050 KG.	0.000 KG.	
		GRAM SOAKED	0.500 KG.	0.500 KG.	
17.	ELEPHANT INDIAN	GREEN FODDER	100.0 KG.	100.0 KG.	NO
		DRY FODDER	15.000 KG	15.000 KG	
		TREE FODDER	150.00KG	150.00KG	
		BANANA	3.600 KG	3.600 KG	
		GUR	1.000 KG	0.000 KG	
		AMLA GREEN	0.050KG	0.000KG	

		MOONG	K H I C H R I	1.000KG	1.000KG	
		RICE		2.000KG	2.000KG	
		BAJRA/WHEAT		1.000KG	1.000KG	
		HALDI		0.100KG	0.100KG	
		SALT		0.100KG	0.100KG	
		MUSTARD OIL		0.500KG	0.500KG	
18.	FOX COMMON	FOWL (ALIVE OF 2 TO 2.5 KG.)		1NO.	1NO.	NO
19.	GAUR (INDIAN BISON)	GREEN FODDER		20.000 KG	20.000 KG	NO
		TREE FODDER		20.000 KG	20.000 KG	
		MASH		10.000 KG	10.000 KG	
		AMLA GREEN		0.050 KG.	0.000 KG.	
20.	GAZELLE INDIAN (CHINKARA)	TREE FODDER		1.000 KG.	1.000 KG.	NO
		MASH		0.500 KG.	0.500 KG.	
		AMLA GREEN		0.050 KG.	0.000 KG.	
		GRAM SOAKED		0.200 KG.	0.200 KG.	
21.	JACKAL	B.C. MEAT		2.500KG	2.000KG	NO B.C. MEAT – ON FRIDAY
22.	LANGUR COMMON	BREAD		0.100KG	0.000KG	NO
		RICE		0.000KG	0.050KG	
		MILK		0.100KG	0.100KG	
		BANANA		0.300KG	0.300KG	
		POTATO/SWEET POTATO		0.100KG	0.100KG	
		CUCUMBER/CARROT		0.100KG	0.100KG	
		GREEN VEG. LEAVES		0.100KG	0.100KG	
		ONION		0.025KG	0.025KG	
		TOMATO		0.025KG	0.025KG	
		GROUND NUT		0.050KG	0.050KG	
		BHUNA GRAM		0.050KG	0.050KG	
		MELON/PEERS		0.000KG	0.100KG	
		GUAVA/CHIKU		0.100KG	0.000KG	

		WATER MELON/ BUTTA GREEN/SINGHARA	0.000KG	0.100KG	
		BEET ROOT/BER	0.100KG	0.000KG	
		BEL FRUIT (APRIL TO JUNE)	0.000KG	0.100KG	
23.	LEOPARD (PANTHER)	B.C. MEAT	7.000KG	6.000KG	NO B.C. MEAT – ON FRIDAY
24.	LION INDIAN	B.C. MEAT	12.000KG	10.000KG	NO B.C. MEAT – ON FRIDAY
25.	MACAQUE BONNET	BREAD	0.100KG	0.000KG	NO
		RICE	0.000KG	0.050KG	
		MILK	0.100KG	0.100KG	
		BANANA	0.300KG	0.300KG	
		POTATO/SWEET POTATO	0.100KG	0.100KG	
		CUCUMBER/CARROT	0.100KG	0.100KG	
		GREEN VEG. LEAVES	0.100KG	0.100KG	
		ONION	0.025KG	0.025KG	
		TOMATO	0.025KG	0.025KG	
		GROUND NUT	0.050KG	0.050KG	
		BHUNA GRAM	0.050KG	0.050KG	
		MELON/PEERS	0.000KG	0.100KG	
		GUAVA/CHIKU	0.100KG	0.000KG	
		WATER MELON/ BUTTA GREEN/SINGHARA	0.000KG	0.100KG	
		BEET ROOT/BER	0.100KG	0.000KG	
BEL FRUIT (APRIL TO JUNE)	0.000KG	0.100KG			
26.	MACAQUE LION-TAILED	EGG BOILED	1NO.	1NO.	NO
		BREAD	0.100KG	0.000KG	
		RICE	0.000KG	0.050KG	
		MILK	0.100KG	0.100KG	
		BANANA	0.300KG	0.300KG	

		POTATO/SWEET POTATO	0.100KG	0.100KG	
		CUCUMBER/CARROT	0.100KG	0.100KG	
		GREEN VEG. LEAVES	0.100KG	0.100KG	
		ONION	0.025KG	0.025KG	
		TOMATO	0.025KG	0.025KG	
		GROUND NUT	0.050KG	0.050KG	
		BHUNA GRAM	0.050KG	0.050KG	
		MELON/PEERS	0.000KG	0.100KG	
		GUAVA/CHIKU	0.100KG	0.000KG	
		WATER MELON/ BUTTA GREEN/SINGHARA	0.000KG	0.100KG	
		BEET ROOT/BER	0.100KG	0.000KG	
		BEL FRUIT (APRIL TO JUNE)	0.000KG	0.100KG	
27.	MACAQUE RHESUS	BREAD	0.100KG	0.000KG	NO
		RICE	0.000KG	0.050KG	
		MILK	0.100KG	0.100KG	
		BANANA	0.300KG	0.300KG	
		POTATO/SWEET POTATO	0.100KG	0.100KG	
		CUCUMBER/CARROT	0.100KG	0.100KG	
		GREEN VEG. LEAVES	0.100KG	0.100KG	
		ONION	0.025KG	0.025KG	
		TOMATO	0.025KG	0.025KG	
		GROUND NUT	0.050KG	0.050KG	
		BHUNA GRAM	0.050KG	0.050KG	
		MELON/PEERS	0.000KG	0.100KG	
		GUAVA/CHIKU	0.100KG	0.000KG	
		WATER MELON/ BUTTA GREEN/SINGHARA	0.000KG	0.100KG	
		BEET ROOT/BER	0.100KG	0.000KG	
		BEL FRUIT (APRIL TO JUNE)	0.000KG	0.100KG	
28.	RHINOCEROS	GREEN FODDER	50.000 KG	50.000 KG	

	INDIAN ONE HORNED	TREE FODDER	50.000 KG	50.000 KG	NO	
		BANANA	0.900 KG	0.900 KG		
		MASH	15.000KG	15.000KG		
		GUR	1.500 KG.	1.500 KG.		
		AMLA GREEN	0.050KG	0.000KG		
		MOONG	K H I C H R I	1.500KG		1.500KG
		RICE		1.500KG		0.000KG
		HALDI		0.100KG		0.100KG
		SALT		0.100KG		0.100KG
		MUSTARD OIL		0.500KG		0.500KG
		LINN SEED		0.100KG		0.900KG
29.	TIGER BENGAL	B.C. MEAT		12.000KG	10.000KG	NO B.C. MEAT – ON FRIDAY
30.	TIGER BENGAL (WHITE)	B.C. MEAT		12.000KG	10.000KG	NO B.C. MEAT – ON FRIDAY
31.	WOLF INDIAN	B.C. MEAT		4.000KG	3.500KG	NO B.C. MEAT – ON FRIDAY
32.	COBRA INDIAN	CHICK ALIVE*		3NO.	3NO.	ONCE IN A WEEK
33.	CROCODILE LONG SNOUTED (GHARIAL)	FISH (6'' TO 9'')	1.500KG	1.500KG	NO	
34.	CROCODILE MARSH (MUGGER)	FISH DEAD/ALIVE* (6'' TO 9'')	1.500KG	1.500KG	NO	
35.	MONITOR LIZARD	EGG BOILED	1NO.	1NO.	NO	
36.	PYTHON INDIAN- ROCK (BABY)	CHICK ALIVE*	3NO.	3NO.	ONCE IN A WEEK	
37.	PYTHON INDIAN- ROCK	RABBIT ALIVE*	1NO.	1NO.	ONCE IN A WEEK	
38.	SNAKE RAT / DHAMAN	CHICK ALIVE*	3NO.	3NO.	ONCE IN A WEEK	

39.	FOWL JUNGLE RED	GREEN VEG. LEAVES	0.020 KG.	0.020 KG.	NO
		MIXED DANA	0.100 KG.	0.100 KG.	
		BREAD	0.010 KG.	0.010 KG.	
		GARLIC	0.006 KG.	0.006 KG.	
		ONION	0.006 KG.	0.006 KG.	
		EGG BOILED	½ NO.	½ NO.	
		BHUNA GRAM SATTU	0.010 KG.	0.010 KG.	
40.	IBIS WHITE	FISH DEAD (2" TO 4")	0.250KG	0.250KG	NO
		KIMA BASEN	0.100KG	0.100KG	
41.	KITE BRAHMINY	BEEF KEEMA	0.200KG	0.200KG	NO B.C. MEAT – ON FRIDAY
		CHICKEN	0.200KG	0.200KG	NO
42.	KITE PARIAH/ BLACK KITE	BEEF KEEMA	0.200KG	0.200KG	NO B.C. MEAT – ON FRIDAY
		CHICKEN	0.200KG	0.200KG	
43.	OWL BARN	CHICKEN	0.200KG	0.200KG	NO
44.	OWL INDIAN GREATER HORNED	CHICKEN	0.300KG	0.300KG	NO
45.	PARAKEET ALEXANDRINE	BANANA	0.037KG	0.037KG	NO
		CHILLIES	0.005KG	0.005KG	
		CUCUMBER/CARROT	0.025KG	0.025KG	
		PEAS GREEN	0.025KG	0.025KG	
		PAPAYA	0.025KG	0.025KG	
		APPLE	0.025KG	0.025KG	
		GROUND NUT	0.025KG	0.025KG	
		MELON/PEERS	0.000KG	0.025KG	
		GUAVA/CHIKU	0.025KG	0.000KG	
		WATER MELON/ BUTTA GREEN/SINGHARA	0.000KG	0.025KG	
		BEET ROOT/BER	0.025KG	0.025KG	

46.	PARAKEET ROSE RING	BANANA	0.037KG	0.037KG	NO
		CHILLIES	0.005KG	0.005KG	
		CUCUMBER/CARROT	0.025KG	0.025KG	
		PEAS GREEN	0.025KG	0.025KG	
		PAPAYA	0.025KG	0.025KG	
		APPLE	0.025KG	0.025KG	
		GROUND NUT	0.025KG	0.025KG	
		MELON/PEERS	0.000KG	0.025KG	
		GUAVA/CHIKU	0.025KG	0.000KG	
		WATER MELON/ BUTTA GREEN/SINGHARA	0.000KG	0.025KG	
		BET ROOT/BER	0.025KG	0.025KG	
47.	PARTRIDGE BLACK	GREEN VEG. LEAVES	0.020KG	0.020KG	NO
		MIXED DANA	0.100KG	0.100KG	
		EGG BOILED	½ NO.	½ NO.	
		BHUNA BASEN/SATTU	0.010 KG	0.010 KG	
48.	PELICAN ROSY/WHITE	FISH DEAD/ALIVE (6" TO 9")	1.000KG	1.000KG	NO
49.	PHEASANT CHINESE SILVER	GREEN VEG. LEAVES	0.020KG	0.020KG	NO
		MIXED DANA	0.100KG	0.100KG	
		EGG BOILED	½ NO.	½ NO.	
		BHUNA BASEN/SATTU	0.010 KG	0.010 KG	
		BREAD	0.010 KG	0.010 KG	
		GARLIC	0.010 KG	0.010 KG	
		ONION	0.006 KG	0.006 KG	
50.	PHEASANT EDWARD	GREEN VEG. LEAVES	0.020 KG.	0.020 KG.	NO
		MIXED DANA	0.100 KG.	0.100 KG.	
		BREAD	0.010 KG.	0.010 KG.	
		GARLIC	0.006 KG.	0.006 KG.	
		ONION	0.006 KG.	0.006 KG.	

		EGG BOILED	½ NO.	½ NO.	
		BHUNA GRAM SATTU	0.010 KG.	0.010 KG.	
		SWEET LIME/ ORANGE	0.020 KG.	0.020 KG.	
51.	RHEA	BANANA	0.300KG	0.300KG	NO
		EGG BOILED	2 NO.	2 NO.	
		BEEF KEEMA	0.100KG	0.100KG	
		ONION	0.075KG	0.075KG	
		GARLIC	0.010KG	0.010KG	
		MIXED DANA	0.150KG	0.150KG	
		CUCUMBER/CARROT	0.150KG	0.150KG	
		GREEN VEG. LEAVES	0.250KG	0.250KG	
		SOYA DANA	0.150KG	0.150KG	
52.	STORK PAINTED	FISH DEAD (2" TO 4")	0.500KG	0.500KG	NO
53.	DEER BARKING	GREEN FODDER	1.000KG	1.000KG	NO
		TREE FODDER	0.500KG	0.500KG	
		MASH	0.500KG	0.500KG	
		AMLA GREEN	0.050KG	0.000KG	
		GRAM SOAKED	0.250KG	0.250KG	
54.	DEER HOG	GREEN FODDER	2.000KG	2.000KG	NO
		TREE FODDER	0.500KG	0.500KG	
		MASH	0.500KG	0.500KG	
		AMLA GREEN	0.050KG	0.000KG	
55.	DEER SAMBAR	GREEN FODDER	7.000KG	7.000KG	NO
		TREE FODDER	1.000KG	1.000KG	
		MASH	2.000KG	2.000KG	
		AMLA GREEN	0.050KG	0.000KG	
56.	DEER SPOTTED	GREEN FODDER	2.000KG	2.000KG	NO
		TREE FODDER	0.500KG	0.500KG	
		MASH	1.000KG	1.000KG	
		AMLA GREEN	0.050KG	0.000KG	

57.	GORAL	GREEN FODDER	1.000KG	1.000KG	NO	
		TREE FODDER	4.000KG	4.000KG		
		MASH	0.500KG	0.500KG		
		AMLA GREEN	0.050KG	0.000KG		
58.	HYAENA STRIPPED	B.C. MEAT	4.500KG	4.000KG	NO	
59.	NILGAI	GREEN FODDER	6.000KG	6.000KG	NO	
		TREE FODDER	1.000KG	1.000KG		
		MASH	2.000KG	2.000KG		
		AMLA GREEN	0.050KG	0.000KG		
60.	PIG WILD	MASH	1.000KG	1.000KG	NO	
		AMLA GREEN	0.050KG	0.000KG		
		GREEN VEG. LEAVES	1.000KG	1.000KG		
		RICE	K H I C H R I	0.200KG		0.200KG
		MOONG		0.100KG		0.100KG
		BAJRA		0.100KG		0.100KG
		GUR		0.100KG		0.100KG
		HALDI		0.010KG		0.010KG
		SALT		0.010KG		0.010KG
		MUSTARD OIL		0.050KG		0.050KG
61.	PORCUPINE INDIAN	SOAKED GRAM		0.200KG	0.200KG	NO
		GREEN VEG. LEAVES		0.250KG	0.250KG	
		BREAD		0.100KG	0.000KG	
		RICE	0.000KG	0.050KG		
		GROUND NUT	0.100KG	0.100KG		
		POTATO/SWEET POTATO	0.100KG	0.100KG		
		CUCUMBER/CARROT	0.100KG	0.100KG		
		WATER MELON/BUTTA GREEN	0.000KG	0.100KG		
		SINGHARA/BEET ROOT/BER	0.100KG	0.000KG		
		EGG BOILED	1 NO.	1NO.		

62.	SAN BOA COMMON	CHICK ALIVE*	4NO.	4NO.	ONCE IN A WEEK
63.	SNAKE DIADEM	CHICK ALIVE*	3NO.	3NO.	ONCE IN A WEEK
64.	SNAKE WATER	CHICK ALIVE*	4NO.	4NO.	NO
65.	TORTOISE	POTATO/SWEET POTATO	0.025KG	0.025KG	NO
		BANANA	0.075KG	0.075KG	
		TOMATO	0.025KG	0.025KG	
		GREEN VEG. LEAVES	0.025KG	0.025KG	
		CUCUMBER/CARROT	0.025KG	0.025KG	
66.	BUDGERIGER	KAKUN	0.020KG	0.020KG	NO
		BAJRA	0.020KG	0.020KG	
		PADDY	0.020KG	0.020KG	
67.	COCKATIEL	GROUND NUT	0.025KG	0.025KG	NO
		CHILLIES	0.005KG	0.005KG	
		CUCUMBER/CARROT	0.025KG	0.025KG	
		APPLE	0.025KG	0.025KG	
		PEAS GREEN	0.025KG	0.000KG	
		KAKUN	0.010KG	0.010KG	
		BAJRA	0.010KG	0.010KG	
		PADDY	0.025KG	0.025KG	
		FRENCH BEANS	0.025KG	0.025KG	
		GRAM SOAKED	0.025KG	0.025KG	
68.	COCKATOO BARE EYED	BANANA	0.150KG	0.150KG	NO
		CHILLIES	0.005KG	0.005KG	
		CUCUMBER/CARROT	0.050KG	0.050KG	
		PEAS GREEN	0.100KG	0.100KG	
		PAPAYA	0.050KG	0.050KG	
		APPLE	0.050KG	0.050KG	
		GROUND NUT	0.050KG	0.050KG	
		MELON/PEERS	0.000KG	0.050KG	

		GUAVA/CHIKU	0.050KG	0.000KG	
		WATER MELON/ BUTTA GREEN/SINGHARA	0.000KG	0.050KG	
		BEET ROOT/BER	0.050KG	0.000KG	
		MAIZE	0.050KG	0.050KG	
69.	CONURE SUN	KAKUN	0.020KG	0.020KG	NO
		BAJRA	0.020KG	0.020KG	
		PADDY	0.020KG	0.020KG	
70.	EMU	GREEN VEG. LEAVES	0.500KG	0.500KG	NO
		EGG BOILED	1 NO.	1 NO.	
		GRAM SOAKED	0.500KG	0.500KG	
		BANANA	1.500KG	1.500KG	
		ONION	0.100KG	0.100KG	
		GARLIC	0.050KG	0.050KG	
		MARBLE CHIPS	0.050KG	0.050KG	
		MIXED DANA	0.500KG	0.500KG	
71.	FINCH ZEBRA	BAJRA	0.010KG	0.010KG	NO
		PADDY	0.010KG	0.010KG	
		TOMATO	0.100KG	0.100KG	
72.	MACAW BLUE & YELLOW	GROUND NUT	0.050KG	0.050KG	NO
		CHILLIES	0.005KG	0.005KG	
		CUCUMBER/CARROT	0.050KG	0.050KG	
		BANANA	0.150KG	0.150KG	
		PAPAYA	0.050KG	0.050KG	
		APPLE	0.050KG	0.050KG	
		WATER MELON/BUTTA GREEN	0.000KG	0.050KG	
		SINGHARA/BEET ROOT/BER	0.050KG	0.000KG	
		MELON/PEARS	0.000KG	0.050KG	
		GUAVA/CHICKU	0.050KG	0.000KG	

		PEAS GREEN	0.100KG	0.100KG		
		MAIZE	0.050KG	0.050KG		
73.	MACAW ILLIGERS	BANANA	0.150KG	0.150KG	NO	
		CHILLIES	0.005KG	0.005KG		
		CUCUMBER/CARROT	0.050KG	0.050KG		
		PEAS GREEN	0.100KG	0.100KG		
		PAPAYA	0.050KG	0.050KG		
		APPLE	0.050KG	0.050KG		
		GROUND NUT	0.050KG	0.050KG		
		MELON/PEERS	0.000KG	0.050KG		
		GUAVA/CHIKU	0.050KG	0.000KG		
		WATER MELON/ BUTTA GREEN/SINGHARA	0.000KG	0.050KG		
		BEET ROOT/BER	0.050KG	0.000KG		
		MAIZE	0.050KG	0.050KG		
74.	MACAW MILITARY	BANANA	0.150KG	0.150KG		NO
		CHILLIES	0.005KG	0.005KG		
		CUCUMBER/CARROT	0.050KG	0.050KG		
		PEAS GREEN	0.100KG	0.100KG		
		PAPAYA	0.050KG	0.050KG		
		APPLE	0.050KG	0.050KG		
		GROUND NUT	0.050KG	0.050KG		
		MELON/PEERS	0.000KG	0.050KG		
		GUAVA/CHIKU	0.050KG	0.000KG		
		WATER MELON/ BUTTA GREEN/SINGHARA	0.000KG	0.050KG		
		BEET ROOT/BER	0.050KG	0.000KG		
		MAIZE	0.050KG	0.050KG		
75.	MUNIA SPOTTED	KAKUN	0.010KG	0.010KG	NO	
		BAJRA	0.010KG	0.010KG		

		PADDY	0.010KG	0.010KG	
76.	PARROTS AFRICAN GREY	BANANA	0.150KG	0.150KG	NO
		CHILLIES	0.005KG	0.005KG	
		CUCUMBER/CARROT	0.050KG	0.050KG	
		PEAS GREEN	0.100KG	0.100KG	
		PAPAYA	0.050KG	0.050KG	
		APPLE	0.050KG	0.050KG	
		GROUND NUT	0.050KG	0.050KG	
		MELON/PEERS	0.000KG	0.050KG	
		GUAVA/CHIKU	0.050KG	0.000KG	
		WATER MELON/ BUTTA GREEN/SINGHARA	0.000KG	0.050KG	
		BEET ROOT/BER	0.050KG	0.000KG	
		MAIZE	0.050KG	0.050KG	
77.	PHEASANT GOLDEN	GREEN VEG. LEAVES	0.020 KG.	0.020 KG.	NO
		MIXED DANA	0.100 KG.	0.100 KG.	
		BREAD	0.010 KG.	0.010 KG.	
		GARLIC	0.006 KG.	0.006 KG.	
		ONION	0.006 KG.	0.006 KG.	
		EGG BOILED	½ NO.	½ NO.	
		BHUNA GRAM SATTU	0.010 KG.	0.010 KG.	
		SWEET LIME/ ORANGE	0.020 KG.	0.020 KG.	
78.	PHEASANT LADY AMHEREST	GREEN VEG. LEAVES	0.020 KG.	0.020 KG.	NO
		MIXED DANA	0.100 KG.	0.100 KG.	
		BREAD	0.010 KG.	0.010 KG.	
		GARLIC	0.006 KG.	0.006 KG.	
		ONION	0.006 KG.	0.006 KG.	
		EGG BOILED	½ NO.	½ NO.	
		BHUNA GRAM SATTU	0.010 KG.	0.010 KG.	
		SWEET LIME/ ORANGE	0.020 KG.	0.020 KG.	

80.	SWAN BLACK	GRAM SOAKED	0.250KG	0.250KG	NO
		MIXED DANA	0.100KG	0.100KG	
		GREEN VEG. LEAVES	0.200KG	0.200KG	
		PADDY	0.100KG	0.100KG	
81.	BABOON HAMADRYAS	BREAD	0.150KG	0.000KG	NO
		RICE	0.000KG	0.075KG	
		MILK	0.100KG	0.100KG	
		BANANA	0.450KG	0.450KG	
		POTATO/SWEET POTATO	0.100KG	0.100KG	
		CUCUMBER/CARROT	0.100KG	0.100KG	
		GREEN VEG. LEAVES	0.100KG	0.100KG	
		ONION	0.025KG	0.025KG	
		TOMATO	0.025KG	0.025KG	
		GROUND NUT	0.075KG	0.075KG	
		BHUNA GRAM	0.075KG	0.075KG	
		MELON/PEERS	0.000KG	0.100KG	
		GUAVA/CHIKU	0.100KG	0.000KG	
		WATER MELON/ BUTTA GREEN/SINGHARA	0.000KG	0.100KG	
		BEET ROOT/BER	0.100KG	0.000KG	
		BEL FRUIT (APRIL TO JUNE)	0.000KG	0.100KG	
82.	DEER SIKA	GREEN FODDER/KUTTI	3.000 KG.	3.000 KG.	NO
		TREE FODDER	0.500 KG.	0.500 KG.	
		MASH	1.000 KG.	1.000 KG.	
		AMLA GREEN	0.050 KG.	0.000 KG.	
83.	ELEPHANT AFRICAN	GREEN FODDER	100.0 KG.	100.0 KG.	NO
		DRY FODDER	15.000 KG	15.000 KG	
		TREE FODDER	150.00KG	150.00KG	
		BANANA	3.600 KG	3.600 KG	
		GUR	1.000 KG	0.000 KG	

		AMLA GREEN	0.050KG	0.000KG	
		MOONG	1.000KG	1.000KG	
		RICE	2.000KG	2.000KG	
		BAJRA/WHEAT	1.000KG	1.000KG	
		HALDI	0.100KG	0.100KG	
		SALT	0.100KG	0.100KG	
		MUSTARD OIL	0.500KG	0.500KG	
		K H I C H R I			
84.	HIPPOPOTAMUS	BANANA	1.500KG	1.500KG	NO
		MASH	20.000KG	20.000KG	
		KUTTI/GREEN FODDER	40.000KG	40.000KG	
		AMLA GREEN	0.050KG	0.000KG	
85.	JAGUAR	B.C. MEAT	6.000KG	7.000KG	NO B.C. MEAT – ON FRIDAY
86.	LORIS SLOW PYGMY	BREAD	0.100KG	0.100KG	NO2
		EGG BOILED	1NO.	1NO.	
		CUCUMBER/CARROT	0.100KG	0.100KG	
		PAPAYA	0.150KG	0.150KG	
		MELON/PEERS	0.000KG	0.200KG	
		GUAVA/CHIKU	0.200KG	0.000KG	
		TOMATO	0.100KG	0.100KG	
		HONEY	0.025KG	0.025KG	
87.	CROCODILE SIAMENSIS	FISH DEAD/ALIVE* (6" TO 9")	1.000KG	1.000KG	NO



## **Conservation Education**

Zoos serve as living educational institutes that offer a dynamic and immersive learning experience. Beyond their role as mere attractions, they function as powerful tools for informal education, fostering a deep appreciation for wildlife and the environment. By showcasing a diverse array of animals from around the world, zoos inspire empathy and emotional connections with species that many might never encounter in their natural habitats. Through interactive exhibits, educational programs, and engaging presentations, zoos educate visitors about the delicate balance of ecosystems and the significance of conserving natural resources.



### **Events**

In FY 2022-23 various events were organized to generate awareness among the students, visitors and local people about the wildlife, conservation and the protection of the environment. The details are as under:

#### **World Earth day**

Marking the occasion of World Earth Day, the National Zoological Park celebrated under the theme "Invest in Your Planet." Students participated in a lively painting competition, showcasing their creative interpretations of environmental preservation. The event concluded with an enriching nature walk, fostering a

deeper connection with the Earth's wonders and reinforcing the importance of collective efforts towards its conservation.

### **International Biodiversity Day**

The National Zoological Park came alive with celebrations on International Biodiversity Day, echoing the theme "Building a Shared Future for All Life." This event aimed to underscore the importance of harmonious coexistence with all living beings. Students enthusiastically participated in a painting and essay competition centered around biodiversity conservation, showcasing their dedication to preserving our planet's rich array of life forms.



The creative expressions captured the essence of our interconnectedness with nature. Subsequently, the participants embarked on an enlightening nature walk, immersing themselves in the park's diverse ecosystems while gaining firsthand insights into the wonders of biodiversity. The event at the National Zoological Park served as a poignant reminder that our actions today shape the shared future of all life on Earth, emphasizing the need for collaborative efforts in safeguarding the delicate balance of our ecosystems.



## World Environment Day

On the 4th of August, 2022, a significant and impactful event unfolded at the National Zoological Park. Driven by the paramount objective of transforming the zoo into a plastic-free haven, an ambitious cleanliness campaign was orchestrated. This initiative saw the active involvement of a diverse range of stakeholders, including dedicated employees, enthusiastic students from the Green Skilled Development Programme, and committed members of the WWF-ENVIS team. Together, they united under a common banner of environmental stewardship, determined to eradicate the blight of plastic pollution from the zoo's surroundings.



The campaign's impact was resounding, as approximately 20 kilograms of plastic waste were diligently gathered from various corners of the zoo and its adjacent areas. However, the commitment did not stop at mere collection. The collected plastic waste was subjected to a process of renewal and rejuvenation. Through the utilization of a sophisticated shredder machine, the plastic was transformed into reusable raw material. This innovative approach ensured that the plastic, which was once a pollutant, was given a new lease of life as a potential resource.





On August 5, 2022, the National Zoological Park embraced the spirit of Environment Day with fervor and purpose. Central to this celebration was the enthusiastic participation of school students, who took center stage in demonstrating their unwavering dedication to the cause of environmental conservation. The event served as a platform for these young minds to exhibit their commitment to a greener future through an array of engaging activities. A notable highlight was their inventive approach to recycling, particularly in repurposing plastic bottles into functional and creative items, offering a visual representation of their innovative thinking and eco-consciousness.



In addition to the plastic recycling showcase, the event encompassed an array of engaging activities aimed at nurturing a deep appreciation for nature's wonders. A biodiversity-focused quiz competition challenged participants' knowledge about the intricate web of life on our planet, sparking curiosity and encouraging a deeper understanding of the importance of preserving biodiversity.

Furthermore, a nature walk was organized, providing an immersive experience that allowed the students to connect with the living world around them. The walk served as a reminder of the beauty and diversity that nature offers and underscored the importance of preserving these treasures for future generations.



## International Yoga Day

With due regard to the honorable Prime Minister's message, a Yoga Day event was organized on June 21, 2022, at the National Zoological Park, involving school children and the employees of the zoo. This event aimed to promote the participation of young students and the staff of the National Zoological Park in the spirit of Yoga and well-being. The event fostered a sense of unity and health consciousness among the attendees, aligning with the Prime Minister's vision for a healthier and more connected nation. The engagement of school children and the zoo employees in this Yoga Day celebration not only highlighted the significance of physical and mental well-being but also emphasized the importance of collective efforts towards a healthier and harmonious society.



## World Snake Day

On July 16, 2022, the National Zoological Park celebrated World Snake Day with a lively event. This program, organized by the zoo, witnessed the enthusiastic participation of groups from both government and public schools. In an effort to engage the younger generation and promote awareness about the importance of snakes in our ecosystem, a fun craft session was arranged, where young children had the opportunity to create beautiful snake sculptures and paper crafts.



## World Nature Conservation Day

The National Zoological Park marked World Nature Conservation Day on July 28, 2022, with enthusiastic participation from school students. As part of the event, these students engaged in crafting bird feeders from recycled bottles, promoting awareness about environmental conservation and sustainable practices. This celebration exemplified the zoo's dedication to educating the younger generation about the significance of preserving our natural world for a sustainable and harmonious future, aligning with the mission of the National Zoological Park.



## International Tiger Day

On July 29, 2022, the National Zoological Park celebrated Tiger Day with great enthusiasm. The event featured active participation from school students who engaged in a variety of exciting activities.



After a session highlighting the importance of tiger conservation, students embarked on a treasure hunt, adding an element of adventure and problem-solving to the day. Additionally,

the event included a mask-making competition and a lively role-play activity, making it an educational and entertaining day for all. Tiger Day not only celebrated these majestic creatures but also raised

awareness about their conservation, aligning perfectly with the National Zoological Park's mission to protect and educate about wildlife.



### World Lion Day

The National Zoological Park celebrated a special event on August 10, 2022. School students were invited to participate in various engaging activities as part of the program. The day's festivities included a captivating storytelling competition where students showcased their narrative talents. Additionally, a scavenger hunt was organized, adding an element of adventure and problem-solving to the celebration. This event provided an excellent platform to engage and educate young minds about the wonders of wildlife and the crucial importance of preserving our natural heritage. It perfectly aligned with the National Zoological Park's dedication to conservation and education.





### **World Elephant Day**

On August 12, 2022, the National Zoological Park, in collaboration with NMNH, celebrated World Elephant Day. The event saw the active participation of students, who began the festivities with an energetic slogan rally. Following this spirited start, everyone had the opportunity to witness a special elephant feast, providing a unique chance to observe these magnificent creatures up close. The day culminated with a presentation on elephants, where valuable information about their conservation and importance in our ecosystem was shared. This event not only celebrated the incredible elephants but



also raised awareness about their conservation needs, aligning with the mission of the National Zoological Park and NMNH to protect and preserve these remarkable animals.



## World Rhino Day

The National Zoological Park, in collaboration with the Indian Oil Corporation Ltd. (IOCL), marked World Rhino Day on September 22, 2022, with active student participation. The celebration included informative activities such as a Rhino feast, student quizzes, and presentations on the five rhino species. These engaging events not only educated students about rhino diversity but also fostered a deeper connection to wildlife. The collaboration with IOCL added corporate support to the conservation cause, exemplifying the importance of partnerships in addressing environmental challenges. This well-rounded celebration at the National Zoological Park effectively combined education, awareness, and interactive activities to promote the conservation of rhinos.





### Wildlife Week

From October 2 to October 8, 2022, the National Zoological Park celebrated Wildlife Week. During this week, a diverse range of activities was organized to inspire and engage students. The primary aim of this program was to raise awareness and generate interest among the public about wildlife. Through these activities, participants learned more about the significance of wildlife conservation and its vital role in maintaining ecological balance. This initiative not only educated but also fostered a deeper appreciation for the incredible biodiversity found in the National Zoological Park, encouraging people to actively participate in wildlife protection.





The wildlife week 2022 celebration continues as National Zoological Park organized a Painting competition for 6<sup>th</sup> to 12<sup>th</sup> grade students which involves the Children with special need as well. Apart from competition a Bingo activity was also organised for 1<sup>st</sup> to 5<sup>th</sup> class of students.





On 4<sup>th</sup> of October, 2022, a role play competition was host by National Zoological Park. The role play was played by 1<sup>st</sup> to 5<sup>th</sup> grades students who presented beautiful plays on **Cheetah Reintroduction India**. In addition to this a painting competition was also organized for University students, where the topic revolves around the **Concealed Beauty of Wildlife**.



**Quiz Competition was organized in 3 rounds which gives an equal opportunity to all the participants.**





6<sup>th</sup> October, 2022

**Giving equal opportunities to all the categories, National Zoological Park organized a Bird Feeder making competition for Children with Special need students.**





**On 7<sup>th</sup> October, 2022, a clay modeling competition was organized for Visually handicap students.**







## Foundation Day

On November 1, 2022, the National Zoological Park celebrated its 64th Foundation Day. On this occasion, all the employees were provided with insights into the history and achievements of the National Zoological Park. Additionally, the director of the park launched a quarterly news magazine during the celebration. This event was a significant milestone, offering an opportunity for the staff to reflect on the institution's journey and contributions to wildlife conservation and education over the years.



## Children Day

In celebration of Children's Day, the National Zoological Park organized a three-day event featuring various activities for children of different age groups. The main objective of this program was to instill environmental awareness and a sense of responsibility for its protection among children. With



enthusiasm, children from various age brackets actively participated in these activities, fostering a deeper connection with the environment and nurturing a commitment to its preservation. This event marked a significant effort by the National Zoological Park to educate and inspire the younger generation about the importance of safeguarding our natural world.



### **International Jaguar Day**

On November 29, 2022, National Jaguar Day was celebrated at the National Zoological Park, where school students engaged in an activity to create masks. The students showcased various artistic skills as they crafted beautiful masks. Following this creative endeavor, a specialist shed light on the significance of jaguars and their importance. The event not only provided an opportunity for

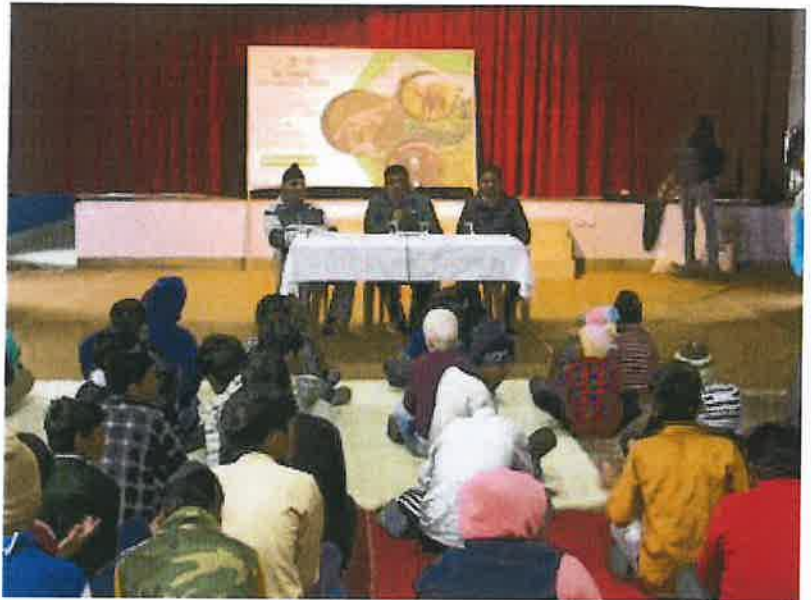
students to express themselves through art but also imparted knowledge about the value of jaguars in the ecosystem.

The combination of artistic expression and educational insights contributed to a meaningful and engaging celebration of National Jaguar Day at the National Zoological Park.



## International Cheetah Day

These two days were celebrated on December 4, 2022, and this year held special significance as the cheetah was reintroduced into Kuno National Park, marking a significant achievement in wildlife conservation. On this occasion, the National Zoological Park organized a special event featuring an expert speech at a school for differently-abled individuals. The reintroduction of the cheetah into its natural habitat not only represents a major success in conservation efforts but also highlights the commitment of the National Zoological Park to the preservation of biodiversity. The expert speech at the special school likely aimed to raise awareness about wildlife conservation and the importance of coexisting with the diverse species that share our planet. Overall, these two days were marked by both celebration and educational initiatives, contributing to a broader understanding of the significance of wildlife preservation.



## National Bird Day

On January 5, 2023, National Bird Day was celebrated at the National Zoological Park. During this event, school students enthusiastically participated and actively engaged in the preparation of bird houses, feeders, and shelters. The students, filled with enthusiasm, prepared bird houses and feeders with great zeal. Following

these creative activities, various types of decorations and embellishments related to birds were showcased, highlighting the diverse and vibrant avian species. The event not only provided a platform for students to showcase their creativity and passion for birds but also aimed at raising awareness about the importance of bird

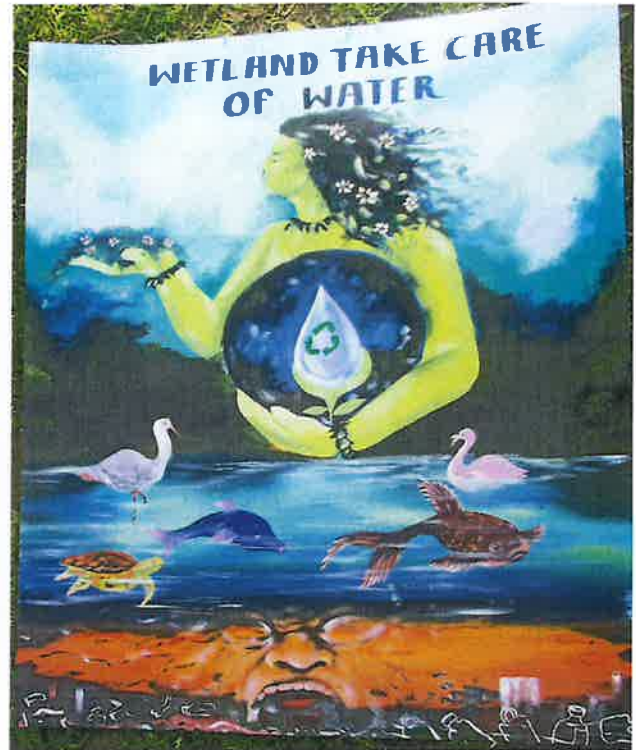
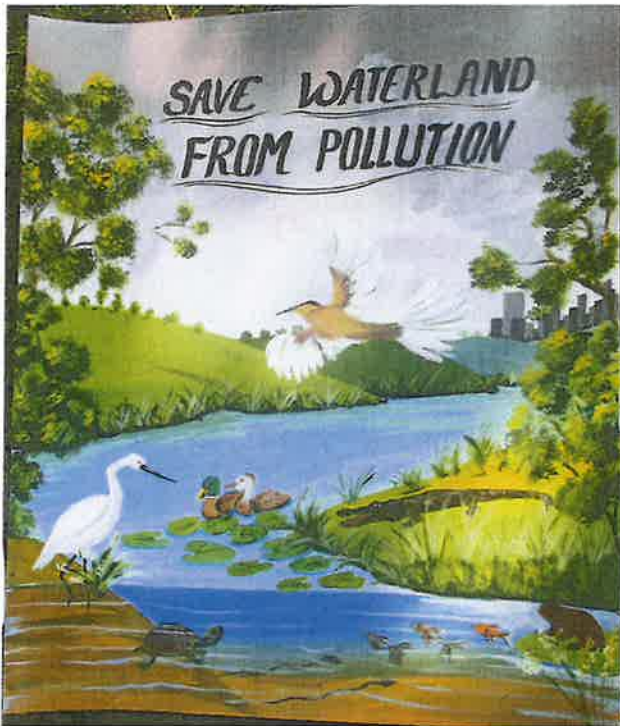
conservation. National Bird Day at the National Zoological Park served as an educational and enjoyable celebration, fostering a deeper appreciation for our feathered friends and their significance in the ecosystem.



## World Wetland Day

The National Zoological Park celebrated World Wetlands Day on February 2, 2023, with the theme "It's time for Wetlands Restoration." Engaging actively in environmental conservation, NZP organized a series of events to mark the occasion. A Painting Competition for students from Government/Public Schools showcased the enthusiasm of the younger generation in addressing environmental challenges, while a Poster Making Competition for University Students aimed at promoting higher education's role in environmental awareness. An Expert Talk by a Scientist from Kalindi Biodiversity Park highlighted the importance of wetlands and their restoration, offering valuable insights to participants. The celebration also included a Zoo Walk, fostering a connection between people and nature. Through these diverse activities, NZP demonstrated a comprehensive approach to environmental conservation, emphasizing education, awareness, and community involvement, contributing to the global effort to preserve and restore vital wetland ecosystems.





### World Hippo Day

The National Zoological Park (NZP) in a continued spirit of environmental engagement celebrated World Hippo Day on February 15, 2023, and concurrently raised awareness about Mission-LiFE. The event featured a Zoo Walk and screenings of educational movies on Hippopotamus, Project Cheetah, and Mission-LiFE. Impressively, 280 school students from tribal areas across different states actively participated, showcasing their enthusiasm throughout the program. The initiative not only celebrated the charismatic hippopotamus but also integrated educational elements, aligning with the broader mission of promoting wildlife conservation and environmental consciousness. The event concluded with empowering "Vote for LiFE" slogans, emphasizing the ongoing commitment to environmental protection and sustainable living.





### **World Sparrow Day**

National Zoological Park marked World Sparrow Day on March 20, 2023, with the theme "I love Sparrows." The event included activities such as bird feeder making using bamboo, a presentation on the importance of sparrows, and a Zoo Walk. Students actively participated, showcasing enthusiasm for conservation efforts. The hands-on creation of bird feeders not only demonstrated creativity but also encouraged an appreciation for nature's beauty. The celebration at the National Zoological Park successfully combined education and interactive initiatives, promoting awareness and fostering a connection to the conservation of sparrows.



### International Day of Forests

The National Zoological Park marked the International Day of Forests on March 21, 2023, under the theme "Forests and Health." The day commenced with a dedicated plantation drive involving all staff members, symbolizing their commitment to environmental sustainability. Following the tree planting initiative, an engaging doodle art activity took place at the Education Centre of the National Zoological Park, inviting visitors to actively participate. This creative endeavor not only provided a platform for artistic expression but also contributed to the broader message of forest conservation.



Subsequently, an awareness session on Mission-LiFE, underscoring the importance of living in harmony with the environment, was conducted. This multi-faceted event at the National Zoological Park demonstrated a holistic approach to celebrating International Day of Forests, incorporating both hands-on conservation efforts and interactive educational activities.



# Research work Carried out and Publication

---

National Zoological Park is the ideal place for scientific research in the field of animal and applied sciences and due to this every year research scholars come to do various research in field maintain stud books and animals history cards, study of nutrition, chemical analysis, pathology and parasitology of endangered animals.



<b>Research/Project Work</b>				
<b>S.N.</b>	<b>Name of the Researcher</b>	<b>Designation</b>	<b>Institute Name</b>	<b>Area of Research /Work</b>
<b>1</b>	Sh T.K. Roy and Team	AWC State Coordinator, Delhi	Wetlands International South Asia	Asian Water Bird Census

<b>Internship Program</b>				
<b>Sr. no.</b>	<b>Name</b>	<b>Institution name</b>	<b>Internship/ Research</b>	<b>Period</b>
<b>1</b>	Ms. Vaishnavi Gadiraju	Amity University, Noida	Internship	June 2022 to July 2022
<b>2</b>	Mr. Rudhra Rahul Kher	Amity University, Noida	Internship	June 2022 to July 2023
<b>3</b>	Ms. Nitya Bhatt	Amity University, Noida	Internship	June 2022 to July 2024
<b>4</b>	Ms. Meenal Tanwer	Amity University, Noida	Internship	June 2022 to July 2025
<b>5</b>	Ms. Aparna Pillai	ICFRE, Dehraduan	Internship	January 2023 - March 2023
<b>6</b>	Mr. Ashutosh Dixit	Pondichery University	Internship	January 2023 - March 2024
<b>7</b>	Mr. Arin Thakur	Pondichery University	Internship	January 2023 - March 2025

# Conservation Breeding Programme

---

CZA has identified about 70 endangered species for conservation breeding. It was felt that Indian Zoo should have at least 100 properly and scientifically bred individuals of each endangered species in captivity, to act as an insurance cover in case of population loss of species in wild.

In order to achieve above objectives, CZA has identified coordinating and participating zoos in India. They have been asked to construct appropriate enclosures for targeted species. National Zoological Park, New Delhi has successfully bred number of endangered animals and birds.

At present, This park participating zoo for the conservation breeding for the following species:

- A. Asiatic Lion
- B. India Rhinoceros
- C. Sangai Deer
- D. Red Jungle Fowl
- E. Bengal Tiger





Mammalia																							
1	Blackbuck	<i>Antelope cervicapra</i>	32	45	26	103	0	0	29	0	0	0	0	0	0	3	6	0	47	43	33	123	
2	Blackbuck (leucistic/white)	<i>Antelope cervicapra</i>	13	13	3	29	0	0	13	0	0	0	0	0	0	0	5	0	16	8	13	37	
3	Indian Bison,Gaur	<i>Bos gaurus</i>	3	7	0	10	1	0	0	0	0	0	0	0	0	0	0	0	4	4	7	0	11
4	Indian Jackal	<i>Canis aureus indicus</i>	4	2	2	8	0	0	3	0	0	0	0	0	0	0	1	0	4	1	5	10	
5	Indian Wolf	<i>Canis lupus pallipes</i>	1	3	0	4	0	0	0	0	0	0	0	0	0	0	0	0	1	3	0	4	
6	Asiatic Wild Dog, Dhole, Indian Wild Dog, Red Dog	<i>Cuon alpinus</i>	1	1	0	2	0	0	0	0	0	0	0	0	0	0	0	0	1	1	0	2	
7	Indian Elephant	<i>Elephas maximus</i>	1	1	0	2	0	0	0	0	0	0	0	0	0	0	0	0	1	1	0	2	
8	Jungle Cat	<i>Felis chaus</i>	1	1	0	2	0	0	0	0	0	0	0	0	0	0	0	0	1	1	0	2	
9	Chinkara	<i>Gazella bennettii</i>	2	1	0	3	0	0	1	1	1	0	0	0	0	0	0	0	3	2	1	6	
10	Indian Hog Deer	<i>Hyelaphus porcinus</i>	11	20	7	38	0	0	13	0	0	0	0	0	0	8	5	0	13	19	6	38	
11	Rhesus Macaque	<i>Maccaca mulatta</i>	3	1	0	4	0	0	0	0	0	0	0	0	0	0	0	0	3	1	0	4	
12	Bonnet Macaque	<i>Maccaca radiata</i>	5	3	0	8	0	0	0	1	0	0	0	0	0	0	0	0	6	3	0	9	
13	Lion-tailed Macaque	<i>Maccaca silenus</i>	4	1	0	5	0	0	0	0	0	0	0	0	0	1	0	0	3	1	0	4	

14	Sloth Bear	<i>Melursus ursinus</i>	2	2	0	4	0	0	0	0	0	0	0	0	0	0	0	0	0	2	2	0	4
15	Asiatic Lion	<i>Panthera leo persica</i>	2	2	0	4	0	0	0	0	0	0	0	0	0	0	0	0	0	2	2	0	4
16	Leopard	<i>Panthera pardus</i>	2	2	0	4	0	0	0	0	0	0	0	0	0	0	0	0	0	2	2	0	4
17	Tiger (leucistic/White)	<i>Panthera tigris</i>	3	2	0	5	2	1	0	0	0	0	0	0	2	1	0	3	2	2	0	5	
18	Bengal Tiger	<i>Panthera tigris tigris</i>	1	3	0	4	0	0	0	0	0	0	0	0	0	0	0	0	0	1	3	0	4
19	Asian Palm Civet	<i>Paradoxurus hermaphroditus</i>	5	3	9	17	0	0	2	0	0	2	2	0	4	0	0	5	3	3	3	11	
20	Indian Rhinoceros (Greater One-horned Rhino)	<i>Rhinoceros unicornis</i>	0	2	0	2	0	0	0	0	0	0	0	0	0	0	0	0	0	2	0	2	
21	Barasingha (Swamp Deer)	<i>Rucervus duvaucelii</i>	1	9	1	11	0	0	0	0	0	0	0	0	0	0	0	0	2	8	0	10	
22	Eld's Deer (Brow-antlered Deer)	<i>Rucervus eldii</i>	24	21	12	57	0	0	13	0	0	0	0	0	3	2	0	24	29	12	65		
23	Bengal Hanuman langur	<i>Semnopithecus entellus</i>	1	1	0	2	0	0	0	0	0	0	0	0	0	0	0	1	1	0	2		
24	Four-horned Antelope	<i>Tetracerus quadricornis</i>	1	1	0	2	0	0	0	0	0	0	0	0	1	0	0	0	1	0	1		
25	Himalayan Black Bear	<i>Ursus thibetanus laniger</i>	1	4	0	5	0	0	0	0	0	0	0	0	0	0	0	1	4	0	5		
26	Small Indian Civet	<i>Viverricula indica</i>	0	0	3	3	0	0	0	0	0	0	0	0	1	0	0	0	0	0	2	2	

27	Fox Common	<i>Vulpes bengalensis</i>	2	2	6	10	0	0	1	0	0	0	0	0	0	0	0	2	2	7	11		
Total Mammalia			27	126	153	69	348	3	1	75	2	1	0	2	2	0	23	21	0	148	152	82	382
Reptilia																							
1	Marsh Crocodile	<i>Crocodylus palustris</i>	1	0	2	3	0	0	0	0	0	0	0	0	0	0	0	0	0	1	0	0	2
2	Checkered Keelback	<i>Fowlea piscator</i>	0	0	2	2	0	0	0	0	0	0	0	0	0	0	0	0	0	0	0	2	0
3	Gharial	<i>Gavialis gangeticus</i>	2	1	0	3	0	0	0	0	0	0	0	0	0	0	0	0	0	2	1	0	3
4	Spectacled Cobra	<i>Naja naja</i>	2	1	1	4	0	0	0	0	0	0	0	0	0	1	0	0	2	1	0	3	0
5	Common Rat Snake	<i>Ptyas mucosa</i>	2	2	1	5	0	0	0	0	0	0	0	0	0	0	0	0	0	5	0	0	5
6	Indian Rock Python	<i>Python molurus</i>	2	2	11	15	0	0	3	0	0	0	4	2	0	0	0	0	3	6	3	12	0
7	Bengal Monitor	<i>Varanus bengalensis</i>	1	1	1	3	0	0	4	0	0	0	0	0	0	2	1	0	1	1	1	2	4
Total Reptilia			7	10	7	18	35	0	0	7	0	0	4	2	0	3	2	0	13	11	7	31	0
Total of Endangered Species			144	168	89	401	3	1	84	2	1	0	6	4	0	28	23	0	168	172	91	431	0























## 29. Mortality of Animals

S.No.	Animal Name	Scientific Name	Sex	Date of Death	Reason of Death
1	Bar-headed Goose	<i>Ancer indicus</i>	M	02.04.22	Enteritis
2	Nilgai	<i>Boselaphus tragocamelus</i>	F	03.04.22	Acute Enteritis
3	Asian Palm Civet	<i>Paradoxurus hermaphroditus</i>	M	05.04.22	Traumatic Injury / Shock
4	Indian Muntjac	<i>Muntiacus muntjak</i>	M	06.04.22	Traumatic Injury / Shock
5	Sambar Deer	<i>Rusa unicolor</i>	M	10.04.22	Senility
6	Bar-headed Goose	<i>Ancer indicus</i>	M	21.04.22	Enteritis
7	Indian Muntjac	<i>Muntiacus muntjak</i>	F	26.04.22	Senility
8	Indian Peafowl	<i>Pavo cristatus</i>	M	30.04.22	Senility
9	Indian Hog Deer	<i>Hyelaphus porcinus</i>	M	30.04.22	Traumatic Injury / Shock
10	Blackbuck	<i>Antilope cervic04a</i>	F	03.05.22	Trauma / Rupture of Uterus
11	Lion-tailed Macaque	<i>Macaca silenus</i>	M	14.05.22	Senility
12	Zebra Finch	<i>Taeniopygia guttata</i>	F	16.05.22	Traumatic Injury / Shock
13	Zebra Finch	<i>Taeniopygia guttata</i>	M	17.05.22	Enteritis
14	Striped Hyena	<i>Hyaena hyaena</i>	F	17.05.22	Traumatic Injury / Shock
15	Blackbuck (leucistic/white)	<i>Antilope cervic04a</i>	F	19.05.22	Senility
16	Blackbuck	<i>Antilope cervic04a</i>	F	19.05.22	Traumatic Injury / Shock
17	Lady Amherst's Pheasant	<i>Chrysolophus amherstiae</i>	M	22.05.22	Acute Enteritis
18	Blackbuck	<i>Antilope cervic04a</i>	F	25.05.22	Acute Enteritis / Senility

19	Indian Muntjac	<i>Muntiacus muntjak</i>	F	25.05.22	Cardio respiratory / Senility
20	Knob-billed Duck	<i>Sarkidiornis melanotos</i>	M	06.06.22	Enteritis
21	Silver Pheasant	<i>Lophura nycthemera</i>	M	07.06.22	Shock
22	Chital/ Spotted Deer	<i>Axis axis</i>	F	08.06.22	Metritis / Shock
23	Golden Pheasant	<i>Chrysolophus pictus</i>	F	08.06.22	Enteritis / Senility
24	Knob-billed Duck	<i>Sarkidiornis melanotos</i>	F	13.06.22	Proventiculitis / Senility
25	Himalayan Goral	<i>Naemorhedus goral</i>	F	24.06.22	Senility
26	Black Partridge	<i>Melanoperdix niger</i>	F	01.07.22	Traumatic Injury / Shock
27	Blackbuck (leucistic/white)	<i>Antilope cervic04a</i>	F	05.07.22	Senility
28	Indian Muntjac	<i>Muntiacus muntjak</i>	M	12.07.22	Traumatic Injury / Shock
29	Chital/ Spotted Deer	<i>Axis axis</i>	M	18.07.22	Senility
30	Indian Muntjac	<i>Muntiacus muntjak</i>	F	15.07.22	Traumatic Shock / Metritis
31	Indian Hog Deer	<i>Hyelaphus porcinus</i>	F	22.07.22	Shock / Metritis
32	Eld's Deer (Brow-antlered Deer)	<i>Rucervus eldii</i>	M	24.07.22	Traumatic Injury / Shock
33	Barasingha (Swamp Deer)	<i>Rucervus duvaucelii</i>	F	25.07.22	Senility
34	Indian Muntjac	<i>Muntiacus muntjak</i>	F	27.07.22	Senility
35	Blackbuck (leucistic/white)	<i>Antilope cervic04a</i>	F	05.08.22	Senility
36	Four-horned Antelope	<i>Tetracerus quadricornis</i>	M	07.08.22	Enteritis
37	Blackbuck	<i>Antilope cervic04a</i>	M	11.08.22	Senility
38	Tiger (leucistic/White)	<i>Panthera tigris</i>	M	24.08.22	Senility
39	Blackbuck	<i>Antilope cervic04a</i>	F	24.08.22	Shock

40	Zebra Finch	Taeniopygia guttata	M	27.08.22	Traumatic Injury / Shock
41	Zebra Finch	Taeniopygia guttata	M	27.08.22	Traumatic Injury / Shock / Enteritis
42	Chital/ Spotted Deer	Axis axis	F	29.08.22	Traumatic Injury / Shock / Metritis
43	Indian Muntjac	Muntiacus muntjak	M	02.09.22	Senility
44	Blackbuck (leucistic/white)	Antilope cervic04a	M	04.09.22	Senility
45	Green Cheeked Conure	Pyaaahura malinae	us	05.09.22	Traumatic Injury / Shock
46	Blackbuck (leucistic/white)	Antilope cervic04a	F	11.09.22	Senility
47	Eld's Deer (Brow-antlered Deer)	Rucervus eldii	F	17.09.22	Traumatic Injury / Shock
48	Indian Hog Deer	Hyelaphus porcinus	M	20.09.22	Enteritis
49	Cockatiel	Nymphicus hollandicus	M	21.09.22	Shock
50	Cockatiel	Nymphicus hollandicus	F	21.09.22	Enteritis
51	Indian Muntjac	Muntiacus muntjak	F	24.09.22	Enteritis
52	Green Cheeked Conure	Pyaaahura malinae	M	25.09.22	Shock
53	Sun Conure, Sun Parakeet	Aratinga solstitialis	M	26.09.22	Shock
54	Indian Hog Deer	Hyelaphus porcinus	F	26.09.22	Pleurisy
55	Sun Conure, Sun Parakeet	Aratinga solstitialis	F	27.09.22	Traumatic Injury / Shock
56	Asian Palm Civet	Paradoxurus hermaphroditus	M	29.09.22	Traumatic Injury / Shock
57	Asian Palm Civet	Paradoxurus hermaphroditus	M	29.09.22	Traumatic Injury / Shock
58	Asian Palm Civet	Paradoxurus hermaphroditus	M	30.09.22	Traumatic Injury / Shock
59	Blackbuck (leucistic/white)	Antilope cervic04a	F	02.10.22	Septicemia / Shock

60	Silver Pheasant	<i>Lophura nycthemera</i>	F	06.10.22	Enteritis
61	Knob-billed Duck	<i>Sarkidiornis melanotos</i>	F	09.10.22	Enteritis
62	Budgerigar	<i>Melopsittacus undulatus</i>	M	11.10.22	Pneumonitis
63	Zebra Finch	<i>Taeniopygia guttata</i>	M	11.10.22	Pneumonitis
64	Indian Hog Deer	<i>Hyelaphus porcinus</i>	F	21.10.22	Shock / Pneumonitis
65	Rose-ringed Parakeet (color morph)	<i>Psittacula sp.</i>	M	25.10.22	Enteritis
66	Sun Conure, Sun Parakeet	<i>Aratinga solstitialis</i>	F	25.10.22	Senility
67	Red Junglefowl	<i>Gallus gallus</i>	M	27.10.22	Proventriculitis
68	Himalayan Goral	<i>Naemorhedus goral</i>	F	28.10.22	Senility
69	Zebra Finch	<i>Taeniopygia guttata</i>	M	31.10.22	Pneumonitis
70	Budgerigar	<i>Melopsittacus undulatus</i>	M	31.10.22	Pneumonitis
71	Indian Hog Deer	<i>Hyelaphus porcinus</i>	M	5.11.22	Senility / Shock
72	Sun Conure, Sun Parakeet	<i>Aratinga solstitialis</i>	F	9.11.22	Enteritis
73	Bengal Monitor	<i>Varanus bengalensis</i>	M	10.11.22	Putrefied
74	Bengal Monitor	<i>Varanus bengalensis</i>	M	13.11.22	Putrefied
75	Indian Hog Deer	<i>Hyelaphus porcinus</i>	M	16.11.22	Traumatic Injury / Shock
76	Indian Hog Deer	<i>Hyelaphus porcinus</i>	F	16.11.22	Traumatic Injury / Shock
77	Indian Hog Deer	<i>Hyelaphus porcinus</i>	F	16.11.22	Traumatic Injury / Shock
78	Budgerigar	<i>Melopsittacus undulatus</i>	M	16.11.22	Proventriculitis
79	Sika Deer	<i>Cervus nippon</i>	F	16.11.22	Traumatic Injury / Shock
80	Knob-billed Duck	<i>Sarkidiornis melanotos</i>	F	16.11.22	Enteritis

81	Indian Hog Deer	<i>Hyelaphus porcinus</i>	M	20.11.22	Traumatic Injury / Shock
82	Indian Muntjac	<i>Muntiacus muntjak</i>	M	20.11.22	Traumatic Injury / Shock / Senility
83	Zebra Finch	<i>Taeniopygia guttata</i>	M	20.11.22	Shock
84	Indian Hog Deer	<i>Hyelaphus porcinus</i>	M	20.11.22	Senility
85	Indian Muntjac	<i>Muntiacus muntjak</i>	M	20.11.22	Traumatic Injury / Shock / Senility
86	Eld's Deer (Brow-antlered Deer)	<i>Rucervus eldii</i>	F	26.11.22	Senility
87	Budgerigar	<i>Melopsittacus undulatus</i>	M	30.11.22	Enteritis
88	Eurasian Spoonbill	<i>Platalea leucorodia</i>	M	30.11.22	Senility / Enteritis
89	Silver Pheasant	<i>Lophura nycthemera</i>	F	07.12.22	Enteritis
90	Blackbuck	<i>Antilope cervic04a</i>	M	08.12.22	Traumatic Injury / Shock
91	Nilgai	<i>Boselaphus tragocamelus</i>	M	08.12.22	Senility
92	Cockatiel	<i>Nymphicus hollandicus</i>	M	15.12.22	Enteritis
93	Red Junglefowl	<i>Gallus gallus</i>	F	16.12.22	Enteritis
94	Tiger (leucistic/White)	<i>Panthera tigris</i>	M	18.12.22	Shock (cardiac failure)
95	Budgerigar	<i>Melopsittacus undulatus</i>	F	20.12.22	Enteritis
96	Bar-headed Goose	<i>Ancer indicus</i>	F	27.12.22	Enteritis
97	Alexandrine Parakeet	<i>Psittacula eupatria</i>	M	29.12.22	Shock / Enteritis
98	Bengal Monitor	<i>Varanus bengalensis</i>	F	29.12.22	Putrefied
99	Budgerigar	<i>Melopsittacus undulatus</i>	M	31.12.22	Enteritis
100	Nilgai	<i>Boselaphus tragocamelus</i>	F	3.01.23	Metritis
101	Striped Hyena	<i>Hyaena hyaena</i>	M	10.01.23	Senility

102	Rose-ringed Parakeet	<i>Psittacula krameri</i>	M	22.01.23	Traumatic Injury / Shock
103	Rose-ringed Parakeet	<i>Psittacula krameri</i>	F	26.01.23	Traumatic Injury / Shock
104	Marsh Crocodile	<i>Crocodylus palustris</i>	F	27.01.23	Enteritis / Egg bound condition
105	Red Junglefowl	<i>Gallus gallus</i>	F	27.01.23	Enteritis / Senility
106	Blackbuck	<i>Antelope cervic04a</i>	F	28.01.23	Traumatic Injury / Shock
107	Budgerigar	<i>Melopsittacus undulatus</i>	F	31.01.23	Shock
108	Budgerigar	<i>Melopsittacus undulatus</i>	M	05.02.23	Traumatic Injury / Shock
109	Tiger (leucistic/White)	<i>Panthera tigris</i>	F	07.02.23	Senility
110	Rose-ringed Parakeet	<i>Psittacula krameri</i>	M	07.02.23	Traumatic Injury / Shock
111	Indian Hog Deer	<i>Hyelaphus porcinus</i>	M	08.02.23	Senility
112	Budgerigar	<i>Melopsittacus undulatus</i>	M	11.02.23	Proventriculitis / Enteritis
113	Indian Jackal	<i>Canis aureus indicus</i>	F	12.02.23	Metritis
114	Eld's Deer (Brow-antlered Deer)	<i>Rucervus eldii</i>	M	13.02.23	Traumatic Injury / Shock
115	Eld's Deer (Brow-antlered Deer)	<i>Rucervus eldii</i>	M	22.02.23	Traumatic Injury / Shock
116	Budgerigar	<i>Melopsittacus undulatus</i>	M	01.03.23	Enteritis
117	Small Indian Civet	<i>Viverricula indica</i>	M	02.03.23	Traumatic Injury / Shock
118	Spectacled Cobra	<i>Naja naja</i>	M	06.03.23	Pneumonitis
119	Silver Pheasant	<i>Lophura nycthemera</i>	M	07.03.23	Enteritis
120	Budgerigar	<i>Melopsittacus undulatus</i>	F	11.03.23	Traumatic Shock / Enteritis
121	Zebra Finch	<i>Taeniopygia guttata</i>	F	12.03.23	Shock
122	Indian Hog Deer	<i>Hyelaphus porcinus</i>	M	12.03.23	Pneumonitis / Senility

<b>123</b>	Rose-ringed Parakeet (color morph)	<i>Psittacula sp.</i>	M	20.03.23	Traumatic Injury / Shock
<b>124</b>	Blackbuck (leucistic/white)	Antilope cervic04a	F	20.03.23	Senility
<b>125</b>	Rose-ringed Parakeet (color morph)	<i>Psittacula sp.</i>	F	20.03.23	Traumatic Injury / Shock

## 26. Animal acquisition / transfer / exchange during the year

S.No.	DATE	SPECIES NAME	RECEIVED NUMBER				RECEIVED FROM
			M	F	U	T	
1	12-Aug-22	Sun Conure, Sun Parakeet ( <i>Aratinga solstitialis</i> )	3	3	0	6	Sh. Anil Garg, Paradise Aviary, 87A, Sobha Malachite, Jakkur Plantation, Karnataka, District Bangalore Urban.
2	12-Aug-22	Green-winged Macaw ( <i>Ara chloroptera</i> )	1	1	0	2	
3	12-Aug-22	Illigers Macaw ( <i>Prioniturus maracana</i> )	1	1	0	2	
4	12-Aug-22	Eclectus Parrot ( <i>Eclectus roratus</i> )	1	1	0	2	
5	12-Aug-22	Green Cheeked Conure ( <i>Pyraehura malinae</i> )	10	10	0	20	
6	12-Aug-22	Black headed Caique ( <i>Pionites melanocephalus</i> )	1	1	0	2	
7	18-Aug-22	Bonnet Macaque ( <i>Macaca radiata</i> )	1	0	0	1	Delhi Forest Department (Rescued) vide CZA approval No.19-115-CZA(53)(NE) DATED 18/08/2022
8	13-Jan-23	Chinkara ( <i>Gazella bennettii</i> )	1	1	0	2	Rohtak Zoo, Rohtak
<b>TOTAL</b>			<b>19</b>	<b>18</b>	<b>0</b>	<b>37</b>	

S.No.	DATE	SPECIES NAME	DISPOSAL NUMBER				SENT TO
			M	F	U	T	
1	3-Sep-22	Indian Rock Python ( <i>Python molurus</i> )	4	2	0	6	To GZRRC, Jamnagar
2	20-Sep-22	Green Cheeked Conure ( <i>Pyraehura malinae</i> )	0	0	1	1	Missing
3	24-Nov-22	Asian Palm Civet ( <i>Paradoxurus hermaphroditus</i> )	2	2	0	4	Balasaheb Thackery Gorewada International Zoological Park, Nagpur, Maharashtra
4	13-Jan-23	Indian Muntjac ( <i>Muntiacus muntjak</i> )	5	7	0	12	Rohtak Zoo, Rohtak
<b>TOTAL</b>			<b>11</b>	<b>11</b>	<b>1</b>	<b>23</b>	

## List of Free Living Wild Animals Within the zoo premises

<b>MAMMALS</b>	
Sr.No.	Name
1	Palm Civet
2	Porcupine
3	Mongoose
4	Five Striped Squirrel
5	Bats

<b>REPTILES</b>	
Sr.No.	Name
1	Cobra
2	Rat snake
3	Common Krait
4	Monitor lizard

<b>BIRDS</b>		
Sr.No.	Name	Specification
1	Pintail Duck	Migratory ,winter visitor and common in all ponds during summer.
2	Spot-bill or Grey Duck	Resident and common breeds in zoo ponds during summer.
3	Shoveller	Migratory,winter visitor,common in all ponds of zoo.
4	Comb Duck	Resident and common winter visitor.
5	Common Teal	Migratory ,winter visitor.
6	White or rosy pelican	Zoo born, free ranging, fly by & come back.
7	Little Cormorant	Summer visitor, fairly in good number .Breeds in zoo ponds during April-June
8	Darter or Snake Bird	Fewer in number
9	Indian Pond Heron or Paddy Bird	Common and breeds during April-July.

10	Nigh Heron	Common during summer and breeds during March-July.
11	Little Egret	Summer visitors breeds along with herons.
12	Cattle Egret	Summer visitor common in zoo ponds and breeds with herons.
13	White Ibis	Not very common ,Breed during July - September.
14	Painted Stork	Arrives zoo in august -September Breeds in zoo ponds during Sept.- Jan. incubation period about 30 days
15	Common Pariah	Abundant. Winter visitors Breeds during Nov - April. Incubation period 30 days.
16	Shikra	Winter Visitor
17	Peafowl Indian	Common in Zoo.
18	Grey Partridge	Fewer in number
19	White Breasaed water hen	Common in zoo ponds and breeds.
20	Indian Moorhen	Fewer in number
21	Stone Curlew	Winter Visitor ,breeds during March - May.
22	Common sand piper	Fewer in number
23	Red wattled Lapwing	Very common breeds during March -June
24	Common Green pigeon	Flocks seen during winter
25	Blue Rock pigeon	Very common .
26	Little Brown Dove	Common and breeds during summer.
27	Spotted Dove	Common
28	Red Turtle Dove	Common
29	Ring Dove	Common and breeds during summer.
30	large Indian Parakeet	Common and breeds in zoo
31	Rose Indian parakeet	Common and breeds in zoo
32	Koel	Common during rainy season
33	Crow Phesant or Coucal	Fewer in number
34	Pied - Crested Cuckoo	Seen during summer
35	Spotted owler	Fewer, breeds during winter
36	Barn owl	Fewer
37	Palm swift	Fewer, usually fly over the pond near office.
38	Pied king -fisher	Common, seen fishing in ponds & moats.
39	White Breasted King -fisher	Common, seen fishing in the ponds & moats.
40	Common King - fisher	Common ,seen fishing in the pond & moats.
41	Roller or Blue Jay	Common seen during summer.
42	Indian Hoopoe	Common and breeds during summer
43	Blue Throated Barbet	Commonly seen during summer and breeds in zoo during March-April.
44	Crimson Breasted Barbet	Common during summer and breeds in zoo during March - april.
45	Yellow fronted pied	Common during summer and breeds
46	Jungle Crow	Fewer in number
47	House Crow	Very Common & breeds during winter
48	Tree pie	Resident & common

49	Common Babbler	Resident & common
50	Yellow-eyed Babbler	Very common & resident.
51	Jungle Babbler	Common & resident.
52	Redvented Bulbul	Common during summer & breeds during April-June
53	White-checked Bulbul	Common seen during summer & breeds during April - June
54	Red - Whiskered Bulbul	Commonly during summer & breeds during April -June.
55	Indian Robin	Common & resident.
56	Magpie Robin	Common and nest during summer.
57	Bay- backed shrike	Common & resident nest during April- June
58	Black Drongo or King Crow	Common & resident nest during April - JUne
59	Tailor Bird	Common & breeds during winter
60	Streak Fantail Warbler	Common & resident
61	Ashy Wren Warbler	Common & resident
62	Brahiny Myna	Common ,breeds during summer
63	Common Myna	Common ,breeds during summer
64	Common weaver bird	Common, Builds nests during summer
65	White Throated Munia	Fewer & resident
66	Red Munia or waxbill	Fewer & resident
67	Large pied Wagtail	Common during winter
68	Yellow headed wagtail	Common during winter
69	White - eye	Common
70	Common Swaliow	Wnter Visitor
71	Purple Sunbird	Commom,nests during March - April
72	Blue thorat	Winter migrant and common