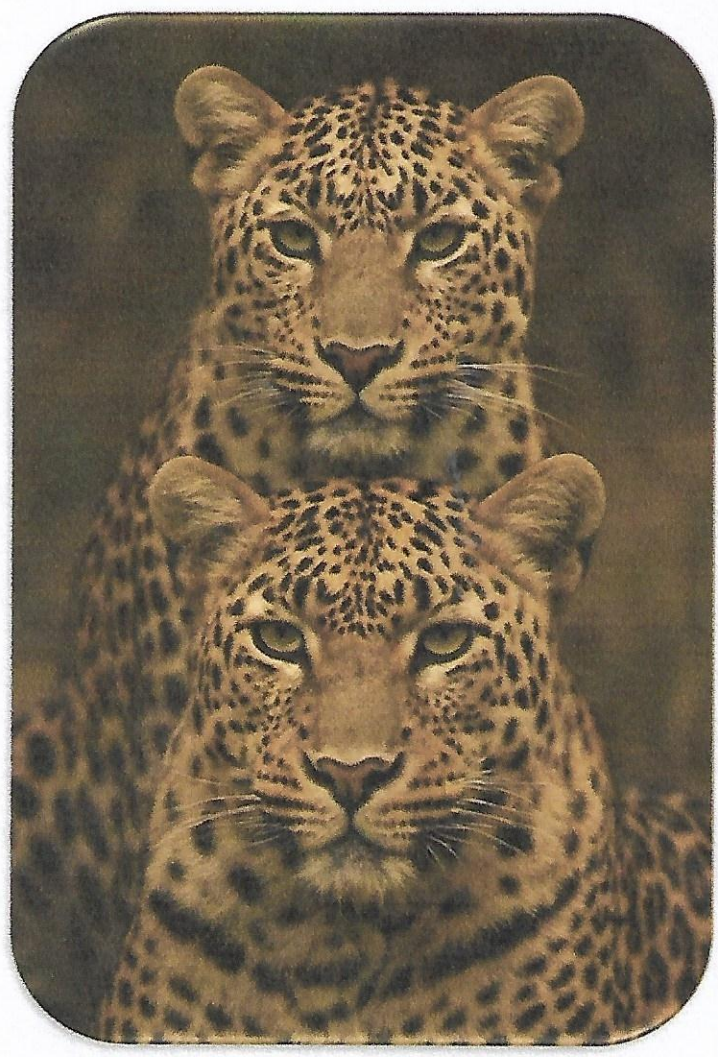


ANNUAL REPORT

2024-25

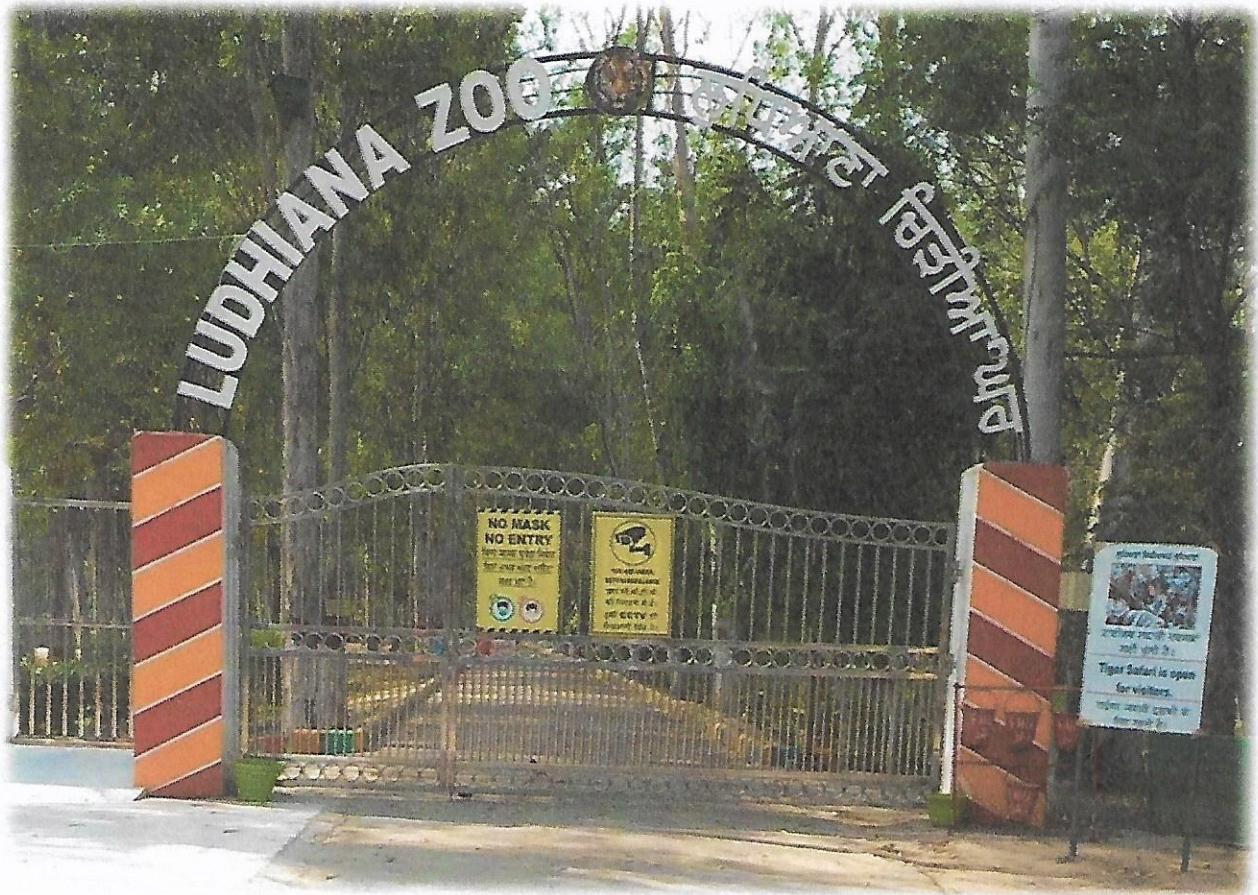


INDEX

S.No.	Section	Page No.
1.	History of the Zoo	3
2.	Our Foundation – Mission, Vision and Values	4
3.	About Us	5
4.	Organizational Chart	6
5.	Staff Structure and Professional Development	6
6.	A Year of Progress and Vision	7
7.	Daily Feed Schedule of Animals	7
8.	De-Worming Schedule of Animals	7
9.	Disinfection Schedule of Animals	8
10.	Death and Disposal of Animals/Birds	8
11.	Excellence in Animal Care and Welfare: Prioritizing Health and Happiness	8
12.	Education Outreach	9
13.	Inspiring Minds – Education and Community Outreach	9
14.	Community Engagement – Building a Conservation Community	10
15.	Infrastructure Development	16
16.	Summary of Financial Performance	23

HISTORY OF THE ZOO

The State Government established Tiger Safari in the Kadian Reserve Forest located on the left bank of river Sutlej near Km. 323-24 on Ludhiana Grand Trunk Road. This Safari was meant for developing a pool of genetically pure species of Royal Bengal Tiger and hence identified as one of the captive breeding facilities in the State. It came into being in 1988 and was opened to public on 23.9.1988 with seven specimens of Royal Bengal Tigers. However, over a period of time, with the technical advice of Central Zoo Authority, New Delhi, more species of animals and birds were added and Ludhiana Zoo was established. Today, Ludhiana Zoo is one of the small zoos in the Punjab State duly recognized by Central Zoo Authority, New Delhi. More than one lakh people visit this zoo annually. Spread over an area of 56 hectares on the G.T. Road, Ludhiana Zoo is a nature and wildlife lover's paradise. This safari cum zoo hosts Royal Bengal Tiger, Common Leopard, Black Buck, Barking Deer, Sambar Deer, Emu, Porcupine, Ducks, Doves, Silver Pheasant, Golden Pheasants, Parrots, Red Jungle Fowl, Chakur Partridges and more.



OUR FOUNDATION – MISSION, VISION AND VALUES

At the heart of Ludhiana Zoo lies a deep-seated commitment to wildlife conservation, education and community engagement. Our mission, vision and values serve as the compass guiding our decisions and actions, ensuring we remain true to our purpose as a leading institution in wildlife preservation and public education.

Our Mission

To protect and conserve wildlife, both within the zoo and in their natural habitats, through dedicated animal care and conservation initiatives. We strive to educate and inspire the public about the importance of biodiversity and the need for responsibility to our planet. We are also committed to providing a safe and enjoyable recreational experience for visitors of all ages.

Our Vision

To be a leading urban wildlife sanctuary and a recognized center of excellence in conservation, education and animal welfare. We aspire to create a future where humans and wildlife coexist harmoniously, fostering a society that values and protects the natural world. We aim to be at the forefront of innovative approaches to wildlife management

Our Core Values

- **Animal Welfare:** Prioritizing the physical and psychological well-being of every animal in our care, providing them with enriching environments and expert veterinary attention.
- **Education:** Delivering engaging and informative educational programs to raise awareness about wildlife conservation and environmental issues.
- **Community:** Engaging with the local community through outreach programs, partnerships, and volunteer opportunities, fostering a sense of shared responsibility for wildlife conservation.
- **Integrity:** Upholding the highest ethical standards in all our operations, ensuring transparency and accountability in our financial management and conservation efforts.
- **Innovation:** Embracing new technologies and approaches to improve animal care enhance visitor experiences and advance our conservation goals.

ABOUT US

1. Name of the Zoo: Ludhiana Zoo, Ludhiana
2. Year of Establishment: 1988
3. Address of the Zoo: Incharge, Ludhiana Zoo,
Near Hotel Amaltas,
G.T. Road, Jalandhar Bypass,
Ludhiana.
4. State: Punjab
5. E-mail address: ludhianazoo@gmail.com
6. Recognition Valid up: 19th August 2022
7. Category of zoo: Small Zoo
8. Area (in hectares): 56
9. Number of visitors F.Y. 2024-25: 96361
10. Visitor's facilities available in Zoo: Visitor Shed, Wheel Chair,
R.O. Drinking Water,
Public Toilets, Parking Place,
Seating Benches, Cafeteria.
11. Weekly Closure Day: Monday

Distance from nearest :

Airport: Sahnewal 20 K.M.

Railway Station: 8 K.M.

Bus Stand: 8 K.M.

Name with designation of the officer-in-charge:

Sh. Narinder Singh Forester (Officer-in-charge)

Name of the Veterinary Officer:

Dr. Shubhankar Sharma Vet. Officer (Civil Veterinary Hospital, Haibowal, Ludhiana)

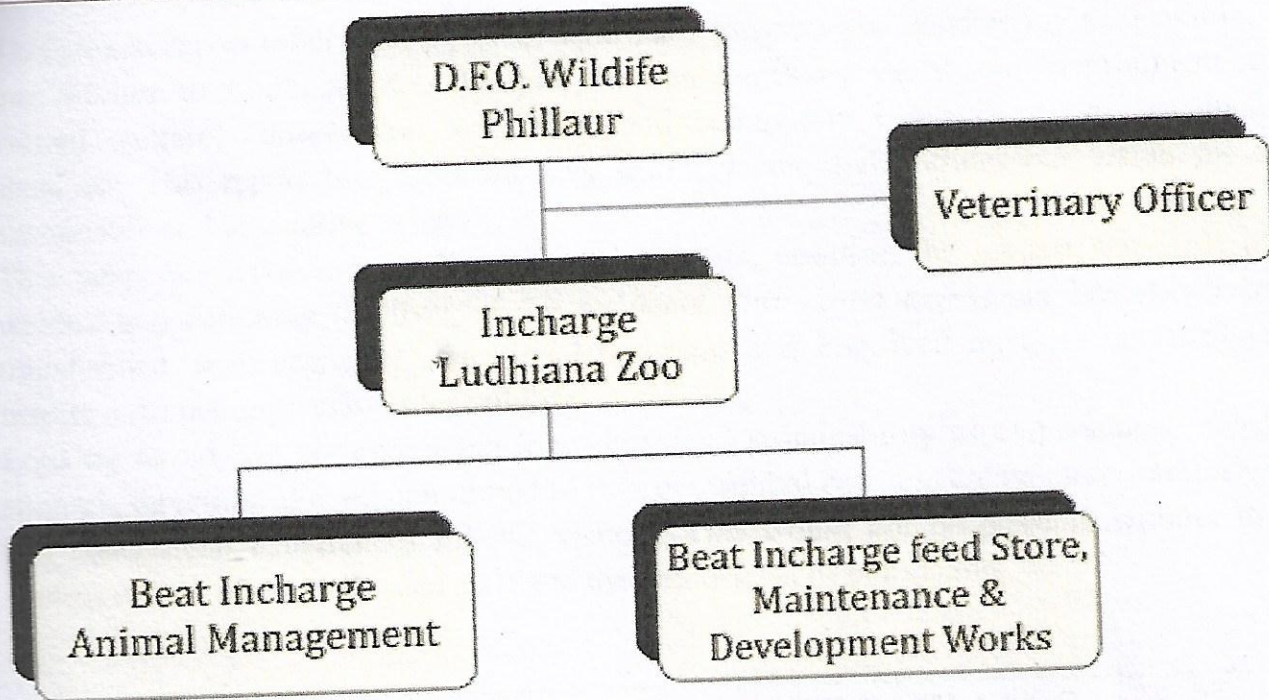
Operator of the Zoo:

Divisional Forest Officer, Wildlife, Phillaur

Contact details/Phone number of Operator : 01826-220098

e-mail : dfowlphillaur@gmail.com

ORGANIZATIONAL CHART



STAFF STRUCTURE AND PROFESSIONAL DEVELOPMENT

Working Manpower of the Zoo:

S. No.	Designation	No. of Posts
1.	Range Forest Officer	-
2.	Forester	1
3.	Forest Guard	1
4.	Beldar	2
5.	Ticket Clerk (Daily Wage)	1
6.	Zoo Keeper (Daily Wage)	4
7.	Night and Day Watcher (Daily Wage)	8
8.	Sweeper/Zoo Keeper Helper (Daily Wage)	12
9.	Gardener	1

A YEAR OF PROGRESS AND VISION

This annual report reflects on a year of significant progress and unwavering dedication to our mission at Ludhiana Zoo. Despite the challenges we faced, our commitment to animal welfare, conservation, education, and community engagement has remained steadfast. This report highlights our key achievements and outlines our vision for a sustainable and innovative future.

This year, We have enhanced our animal habitats, ensuring the highest standards of welfare and enriching the lives of our residents. Our visitor experience has also been transformed, with engaging educational programs and improved facilities designed to inspire a deeper appreciation for wildlife.

Looking ahead, we are embracing innovation and sustainability as cornerstones of our strategic direction. We are committed to improve animal care and create more immersive and educational experiences for our visitors. This would not be possible without the tireless efforts of our dedicated staff and the enthusiasm of our visitors.

DAILY FEED SCHEDULE OF ANIMALS

The food requirement varies from animal to animal and quantity also varies between age groups and sex. Herbivores and omnivores are fed in the morning hours according to their feed requirements. Carnivores are fed in the evening time, except on Fridays, which is a starve day to mimic natural feeding behavior. Quality and Quantity are monitored by the Range forest Officer respectively.

The daily food supplied by the contractor is first weighed inside the zoo. Then it is deposited in the store room where it is distributed to all the animals and birds as per the feeding schedule.

DE-WORMING SCHEDULE OF ANIMALS

S. No.	Species	Drug Used	Month
1	All Species	Panacare	July 2024
2.	All Species	Albendazole	January 2025

DISINFECTION SCHEDULE OF ANIMALS

S. No.	Species	Type of Enclosure	Disinfectant used and method	Frequency of Disinfection
1	All Species	All holding houses, passages	KohrsalinTh Mopping	Daily
2.	All Species	All holding houses, passages	Potassium Permanganate foot dip	Daily

DEATH AND DISPOSAL OF ANIMALS/BIRDS

S. No.	Name of Animals	M	F	U	Total	Remarks
1.	Red Jungle Fowl	1	0	0	1	
-2.	Royal Bengal Tiger	1	0	0	1	
3.	Leopard	0	1	0	1	

EXCELLENCE IN ANIMAL CARE AND WELFARE: PRIORTIZING HEALTH AND HAPPINESS

Ludhiana Zoo is deeply committed to providing the highest standards of care and welfare for all its animal residents. This commitment is reflected in our comprehensive approach to veterinary care, nutrition and habitat enrichment all designed to ensure the physical and psychological well-being of the animals under our care. With 18 species and a total animal/birds population of around 248 our staff works tirelessly to meet the diverse needs of our animal residents.

Veterinary Care: A Proactive Approach

We conduct routine check-ups for all animals, encompassing physical examinations, vaccinations and parasite control. These regular assessments allow us to identify and address potential health issues early, minimizing the need for more invasive treatments. We also have access to external laboratory services for specialized testing and analysis.

Nutrition Programs: Tailored Diets for Optimal Health

Recognizing that proper nutrition is essential for animal health and longevity, we have developed customized diet plans for each species, taking into account their specific nutritional requirements. We carefully select and source high-quality ingredients, ensuring that our animals receive a balanced and complete diet.

We prioritize sourcing fresh and local produce whenever possible. Our food preparation facilities adhere to strict hygiene standards to prevent contamination and ensure food safety.

Habitat Enrichment

We believe that enriching environments are crucial for promoting animal welfare and preventing behavioral problems. Our animal care team is dedicated to providing stimulating and varied habitats that encourage natural behaviors.

We also focus on environmental complexity, incorporating natural substrates, climbing structures, and water features into our animal enclosures.

EDUCATIONAL OUTREACH

We believe that education is crucial for fostering a deeper appreciation for wildlife and conservation. We introduced interactive exhibits and guided tours focusing on the importance of biodiversity and the impact of human activities on the environment. Furthermore, we hosted a series of awareness programme for school students and local communities, promoting sustainable practices and responsible tourism. One particular success was the development of a walk through a protected forest, allowing visitors to experience the beauty and fragility of natural ecosystems firsthand.

INSPIRING MINDS: EDUCATION AND COMMUNITY OUTREACH

Ludhiana Zoo recognizes the vital role of education and community engagement in fostering a deeper understanding and appreciation for wildlife conservation.

Educational Programs: Nurturing Future Conservationists

Our educational programs are carefully designed to cater to various age groups and learning styles, ensuring an engaging and impactful experience for all participants.

- **School Programs:** We conduct different kinds of competitions on important dates related to Wildlife and Environment, providing students with hands-on learning experiences about animal biology, conservation issues, and the interconnectedness of ecosystems.
- **Workshops and Seminars:** We conduct awareness programs for adults, covering topics such as wildlife photography, bird watching, and sustainable living. These programs provide opportunities for lifelong learning and empower individuals to make informed choices that benefit the environment.
- **Guided Tours:** Our knowledgeable and passionate staff lead visitors on engaging tours of the zoo, sharing fascinating facts about the animals and highlighting the importance of conservation. We offer themed tours focusing on specific topics, such as endangered species, animal adaptations, and the role of zoos in conservation.

COMMUNITY ENGAGEMENT: BUILDING A CONSERVATION COMMUNITY

We are committed to engaging with the local community and fostering a sense of shared responsibility for wildlife conservation. We organize a range of community events and initiatives designed to raise awareness, promote sustainable practices, and inspire action.

- **Awareness Campaigns:** We conduct awareness campaigns on critical environmental issues, such as wildlife crime, plastic pollution, and deforestation. These campaigns utilize a variety of channels, including social media, public service announcements, and community events, to reach a broad audience. Our "Say No to Plastic" campaign reached people through social media and community events, promoting responsible waste management practices.
- **Special Events:** We organize special events throughout the year to aware about wildlife and raise awareness about conservation. These events include "Wildlife Week", "International Tiger Day", "International Leopard Day" "Environment Day" "World Tourism Day" and "World Wildlife Day" etc.
- **Volunteer Programs:** We offer volunteer opportunities for individuals who are passionate about wildlife conservation. Volunteers assist with a variety of tasks, including animal care, education and visitor services, gaining valuable experience and contributing to the zoo's mission.

Through these diverse educational programs and community engagement initiatives, Ludhiana Zoo is actively fostering environmental stewardship and conservation awareness among visitors and the local community. By providing interactive learning experiences and promoting positive visitor experiences, we are

inspiring individuals to become lifelong advocates for wildlife and the environment.



World Tourism Day





Wildlife Week Celebrations





INFRASTRUCTURE DEVELOPMENT

Infrastructure Projects: Building for the Future

To enhance the visitor experience and improve operational efficiency, we undertook several key infrastructure projects during the year, contributing to a more engaging and comfortable experience for guests. These projects demonstrate our commitment to sustainability and environmental responsibility. We have completed the construction of a new Gharial Enclosure as ensuring the highest standards of animal care. We have also completed the construction of new interlock paver starting from the Birds' Section to the New Gharial Enclosure ensures smooth and accessible routes throughout the both sections.





Construction of New Gharial Enclosure





New Interlock Paver

Enclosure Enhancement:

We have renovated the already built Porcupine Enclosure improving the quality of animal residence.





Renovation of Porcupine Enclosure

Visitor Amenities: Catering to Every Need

Understanding the importance of providing a comfortable and enjoyable experience, we have expanded our visitor amenities. We have invested significantly in upgrading our existing facilities to enhance visitor comfort and convenience. New Visitors' Shelter provides comfortable space for relaxation and reflection. We have also made significant strides in enhancing accessibility, including the wheelchair availability and designated parking areas for visitors with disabilities.



Visitor Shelter

SUMMARY OF FINANCIAL PERFORMANCE

In the past fiscal year, Ludhiana Zoo demonstrated a strong financial performance, reflecting its commitment to responsible resource management.

- **Total Revenue:** The zoo generated total revenue of INR 4699700/-

Visitor Numbers and Trends: Measuring Our Impact

Over the past year, Ludhiana Zoo welcomed 96406 total visitors. This reflects the popularity of the zoo as a premier destination for wildlife enthusiasts and families. We observed peak visitor seasons during the spring and fall months, coinciding with favorable weather conditions and school holidays. Demographic data reveals a diverse visitor base, with significant representation from local communities and tourists from across the region.

S. No.	Particulars of Fee and Rate	No. of Visitors during the Year	Amount	Remarks
1.	Entry Fee Adult Person Rs. 30/-	83941	2518230.00	
2.	Entry Fee Children age 3 years to 12 Years per Person Rs. 20/-	12465	249300.00	
3.	Playing Mini Bus in Tiger Safari	-	1337300.00	
4.	Parking Place	-	397770.00	
5.	Canteen	-	197100.00	
TOTAL			4699700.00	

Rates of Entry Ticket:

S. No.	Particulars	Rate	Remarks
1.	Entry Ticket (Adults)	30/-	
2.	Entry Ticket (Children)	20/-	

Rates of Parking Place:

S. No.	Particulars	Rate	Remarks
1.	Cycle	5/-	
2.	Two Wheeler	10/-	
3.	Car	20/-	
4.	Heavy Vehicle	30/-	

Rates of Tiger Safari:

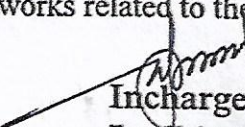
S. No.	Particulars	Rate	Remarks
1.	Entry Ticket of Tiger Safari (3 Years and above)	50/-	

Expenditure:

The zoo's expenditures are carefully managed to ensure that resources are allocated effectively to support its core activities. Major expenditure categories include:

- **Animal Care and Feed:** The largest expenditure, encompassing the costs of providing high-quality food, veterinary care, and enrichment activities for the animals.
- **Staff Salaries:** Compensation for the dedicated staff who works tirelessly to care for the animals and manage the zoo's operations.
- **Facility Maintenance:** Costs associated with maintaining the zoo's infrastructure, including enclosures, buildings, and grounds.
- **Educational Program Costs:** Expenses related to developing and delivering educational programs for schools, community groups and the general public.

Expenditure of Ludhiana Zoo, Ludhiana during the F.Y. 2024-25 is Rs. 18256926/- for Maintenance, Feed-Fodder and other essential works related to the Zoo.


Incharge
Ludhiana Zoo, Ludhiana

CLG

Divisional Forest Officer,
Wildlife Division, Ludhiana