

INDEX	
1.	ENCLOSURE
2.	RHINOCEROS NIGHT HOUSE
3.	EARTHEN MOUNDS
4.	MUD POND
5.	CHAINLINK FENCING WITH TOE WALL
6.	PAYER BLOCK APPROACH PATHWAY

Sanjay Gandhi Biological Park
 Director,
 Sanjay Gandhi Biological Park,
 Patna

*Design approved in 69th
 Meeting of the Design Committee*

Member Secretary
 Central Zoo Authority
 Ministry of Environment and Forests
 Govt. of India, New Delhi

TOTAL AREA TO BE DEVELOPE--57040 Sqm.

PROPOSED DEVELOPEMENT AT 100m FROM THE AVAILABLE
 HORNEED RHINOCEROS BREEDING ENCLOSURE AT SANJAY
 GANDHI BIOLOGICAL PARK, PATNA

CLIENT
 GOVERNMENT OF BIHAR
 SANJAY GANDHI BIOLOGICAL PARK

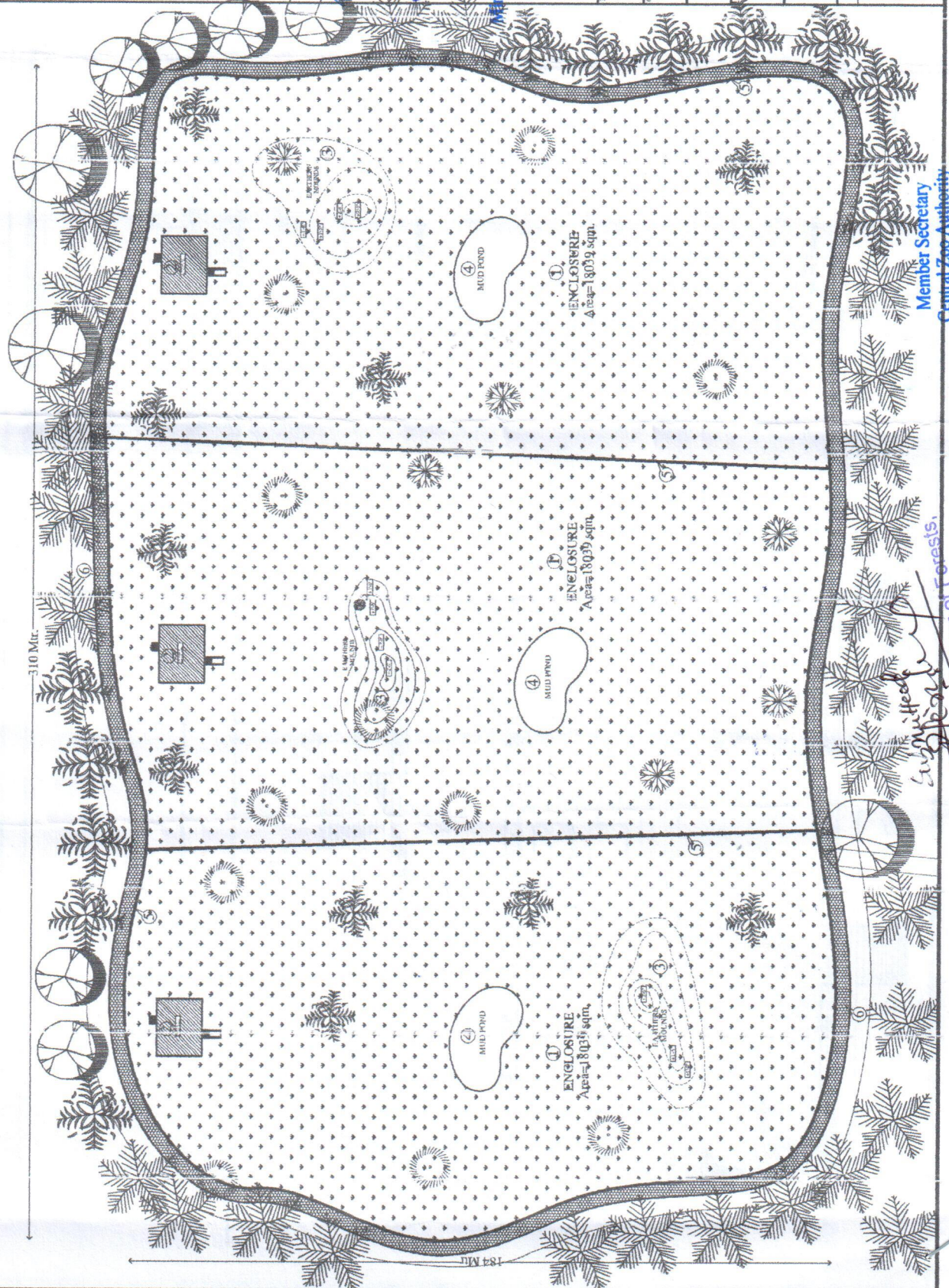
BUILDING TYPE
 NORTH

SHEET TITLE
 DEVELOPEMENT
 SITE PLAN

SHEET NO.
 A-01

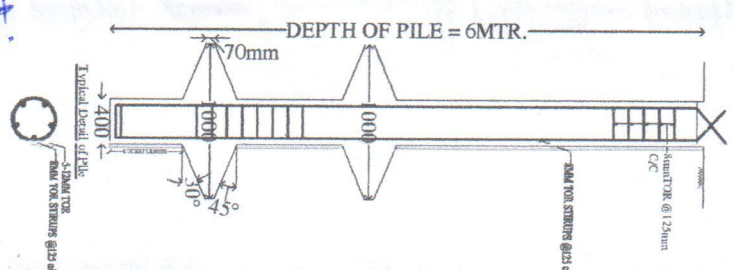
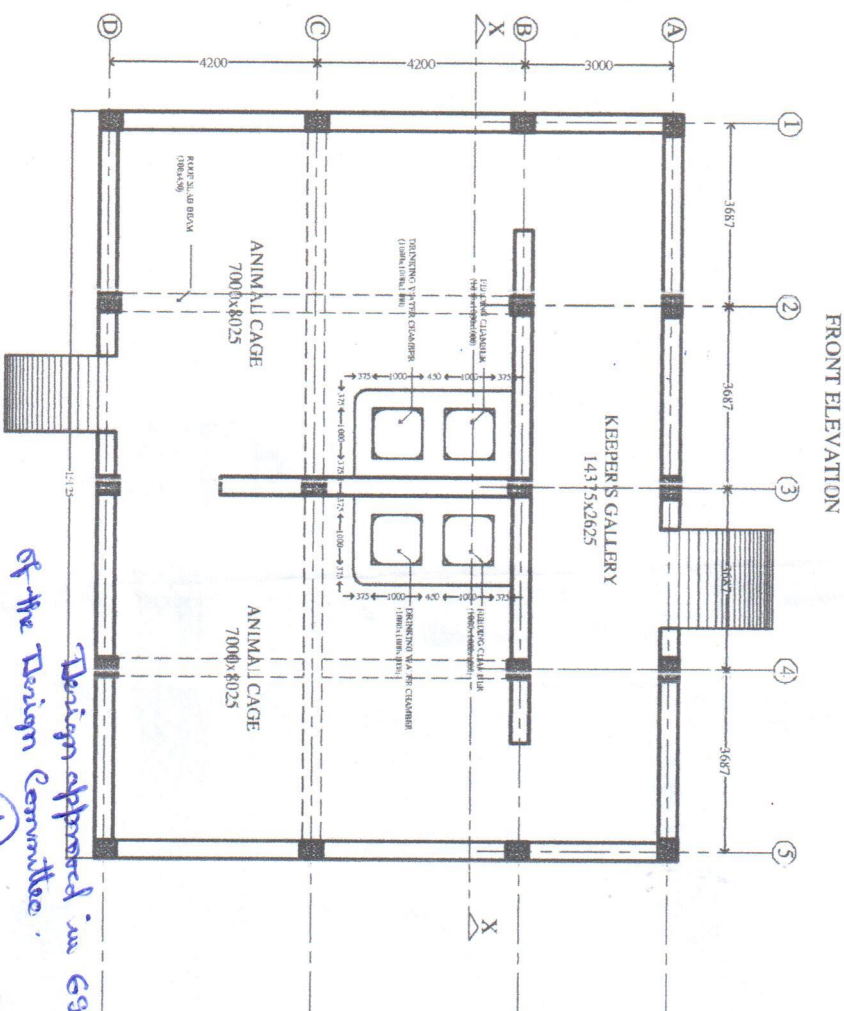
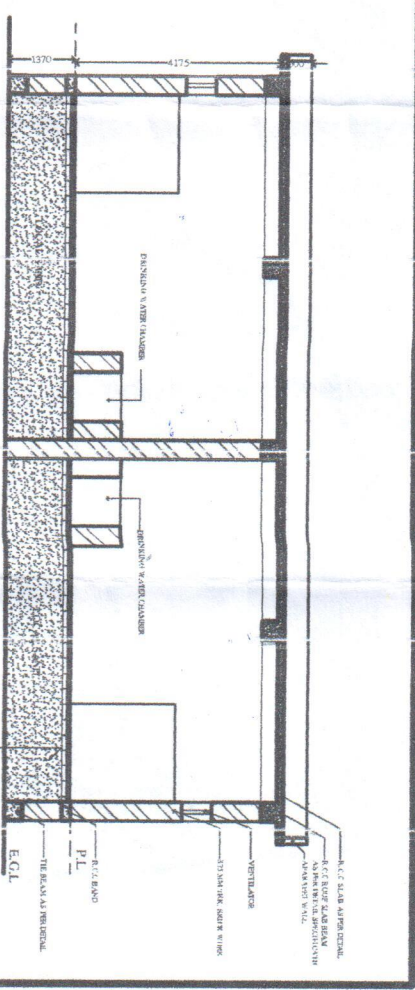
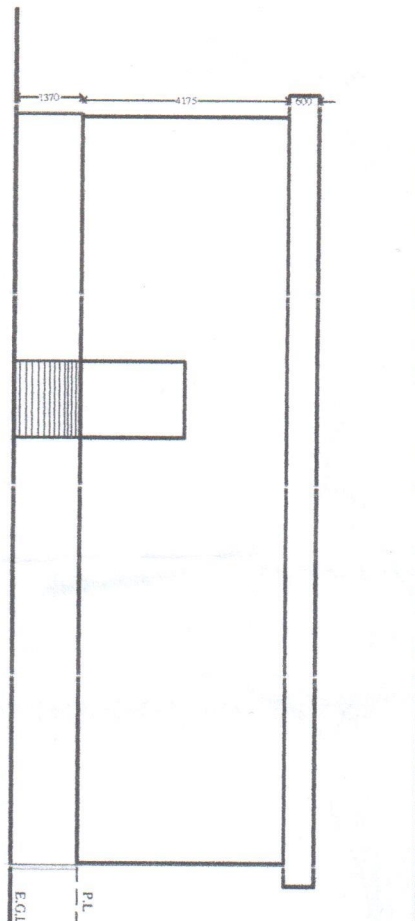
DATE
 21/01/2006

ARRIDE ENGINEER
 ARCHITECT, ENGINEER, ARTIST & DESIGNER. SANJAY GANDHI
 BIOLOGICAL PARK, PATNA



Member Secretary
 Central Zoo Authority
 Ministry of Environment and Forests
 Govt. of India, New Delhi

Sanjay Gandhi
 Range Officer of Forests,
 Zoological Range, Patna
 Sanjay Gandhi Biological Park



Design approved in 69th Meeting of the Design Committee.

Subbaraj Reddy
 Range Officer of Forest
 Zoological Range
 Sanjay Gandhi Biological Park Patna

Sanjay Gandhi Biological Park
 Director,
 Sanjay Gandhi Biological Park

PROJECT SANJAY GANDHI BIOLOGICAL PARK NIGHT HOUSE		SCALE 1/4" = 1'-0"	
DATE 24.11.2011		PROJECT TITLE NIGHT HOUSE	
DESIGNER ARRADE ENGINEER		DATE 24.11.2011	
CLIENT RANGE OFFICER OF FOREST ZOOLOGICAL RANGE SANJAY GANDHI BIOLOGICAL PARK PATNA		DATE 24.11.2011	
PROJECT NO. RA-02		DATE 24.11.2011	

Member Secretary
 Central Zoo Authority
 Ministry of Environment and Forests
 Govt. of India, New Delhi