



(272) 3 Copies

# केन्द्रीय चिड़ियाघर प्राधिकरण Central Zoo Authority

(STATUTORY BODY UNDER THE MINISTRY OF ENVIRONMENT & FORESTS, GOVT. OF INDIA)

263

Bikaner House, Annexe VI,  
Shahjahan Road, New Delhi - 110011  
website : <http://www.cza.nic.in>

F. No. 19-23/93-CZA(256)(Vol.III)(M)

DATE: 25.1.2008

To

The Principal Chief Conservator of Forests,  
Government of Tripura,  
Aranya Bhawan, Pt. Nehru Complex,  
Kunjaban, Agartala – 799 006 (Tripura)

**Sub:- Designs submitted for the proposed construction of Clouded leopard, Pig tailed macaque, Spectacled langur and Binturong as part to ongoing Conservation Breeding Programme at Sepahijala Zoo, Sepahijala, Tripura.**

Sir,

Please refer to your letter No. 8 (127)/For-WL-2004/1268 dated 19<sup>th</sup> December, 2007.

The proposed designs of Clouded leopard, Pig tailed macaque, Spectacled langur and Binturong enclosures as part of Conservation Breeding Programme at Sepahijala Zoo were placed before the 1<sup>st</sup> Meeting of the Expert Group on Zoo Designing of Central Zoo Authority held on 27<sup>th</sup> December, 2007.

The observations made by the Expert Group Members are given below:-

**1. Enclosure for Clouded leopard, Pig tailed macaque & Spectacled langur**

The Members approved the designs subject to that the following amendments should be made:-

- (i) The minimum width of all the enclosures should be increased to 25-30 meters, keeping in view of the available area.
- (ii) The width of the proposed inward inclined overhang with steel plate should be made of minimum 1.25 meters.
- (iii) The provision of attached/ associated toilet in project office should be made.

...2/-

AC  
Egg  
28/1/08

272

204

**2. Enclosure for Binturong enclosure**

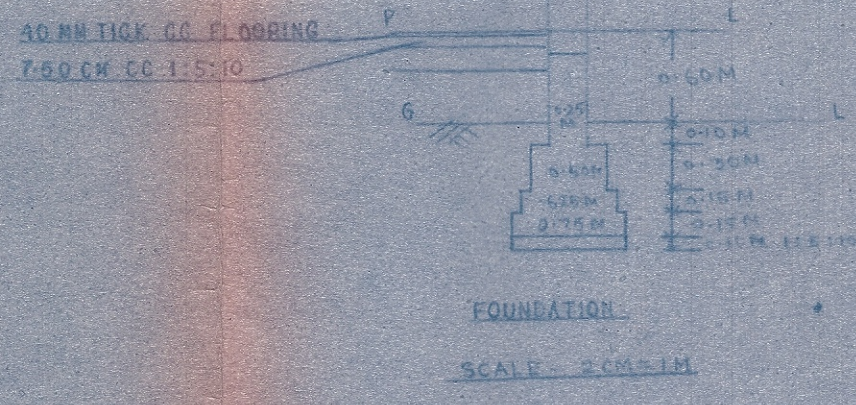
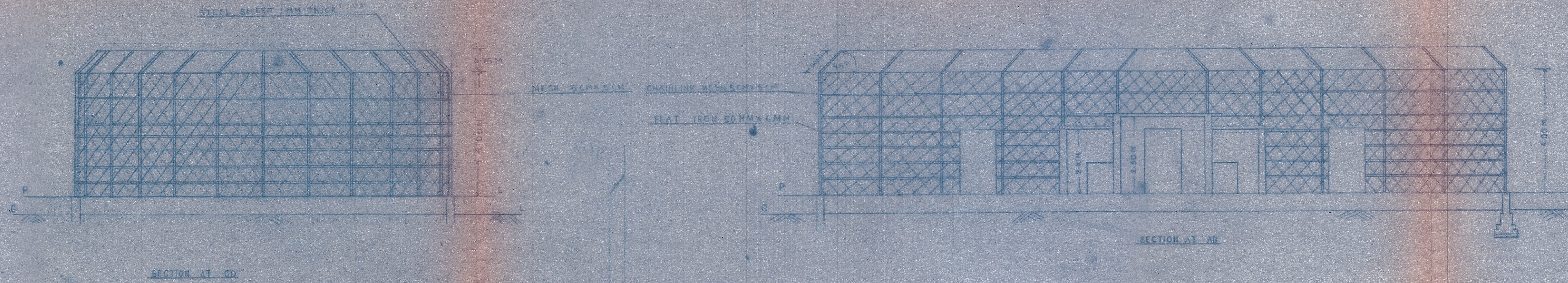
The Members did not approve the design. However, the Members suggested that the height of the chain link mesh barrier should be reduced to 2.5 meters with inclined inward steel plate of 1 meter width on the top. The steel plate should be placed at the angle of 60 degree.

Keeping in view of the above, you are requested to submit a revised design along with estimate to this office for further consideration of this Authority.

**Yours faithfully,  
sd/-  
(B. R. Sharma)  
Member Secretary**

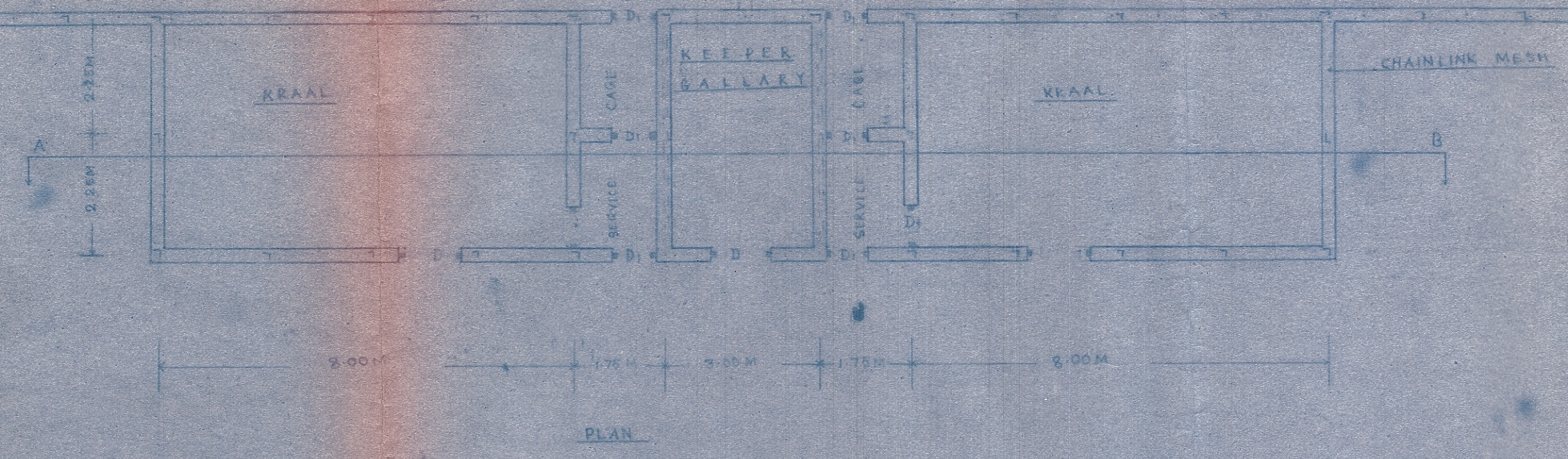
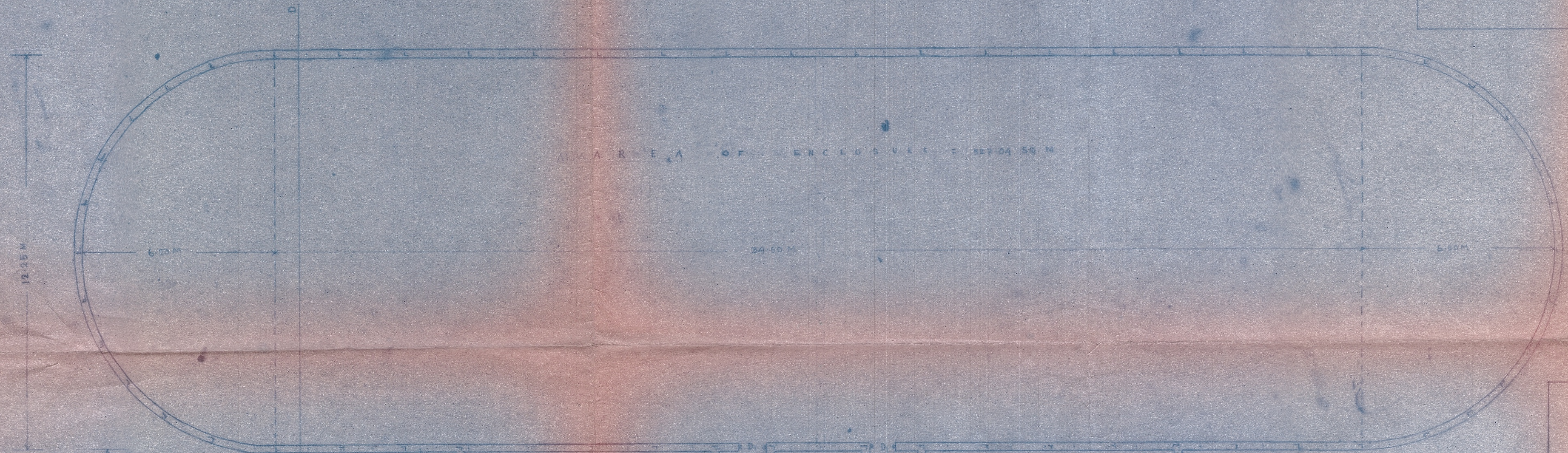
Copy to the Director, Sepahijala Zoological Park, Agartala, Tripura for favour of information & necessary action.

131  
**(B. R. Sharma)  
Member Secretary**



INDEX

1. D = 1.20M X 2.10M
2. D1 = 0.80M X 1.00M
3. POST ALONG PERIPHERY ANGLE IRON 75 X 75 X 6MM



OFFICE OF THE  
 PRINCIPAL CHIEF CONSERVATOR OF FORESTS,  
 TRIPURA, AGARTALA.

CONSTRUCTION OF CLOUDED LEOPARD ENCLOSURE AT SEPAHJALA  
 200

SCALE - 1CM = 1M

Drawn by  
 J. J. Shafiq  
 08.9.07

Principal Chief Conservator of Forests,  
 Tripura.