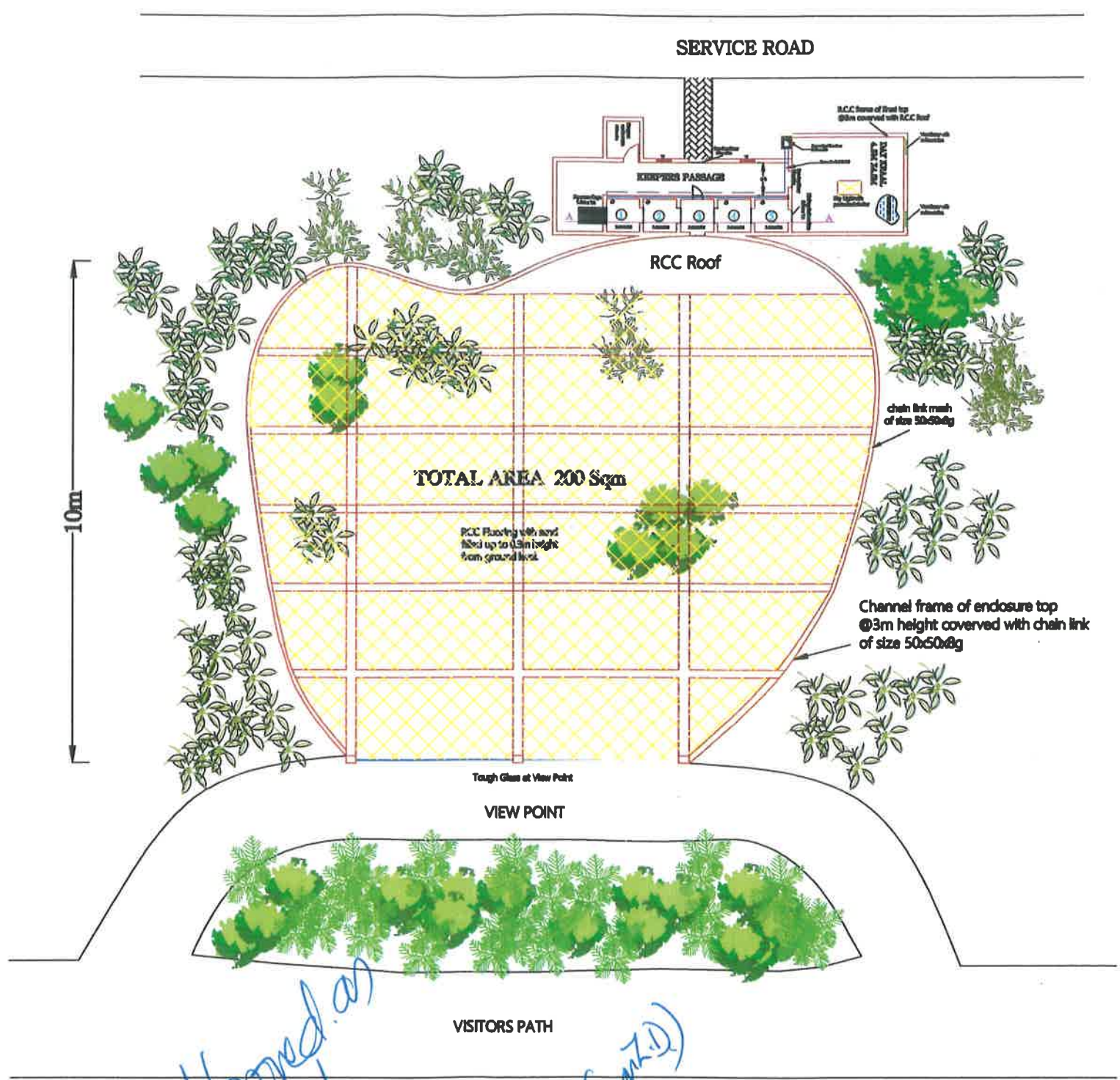


83

### TYPICAL PLAN GLASS VIEWING EXHIBIT OF JUNGLE CAT



Maybe approved as revised and resubmitted

*[Signature]*

9.12

Approved as revised.

*[Signature]*

09/12/14

CS2 meeting of Expt. (C.A.Z.D.)

B. S. BONAL, IFS  
Member Secretary  
Central Zoo Authority  
Ministry of Environment, Forests & Climate Change  
Govt. of India, New Delhi-110001

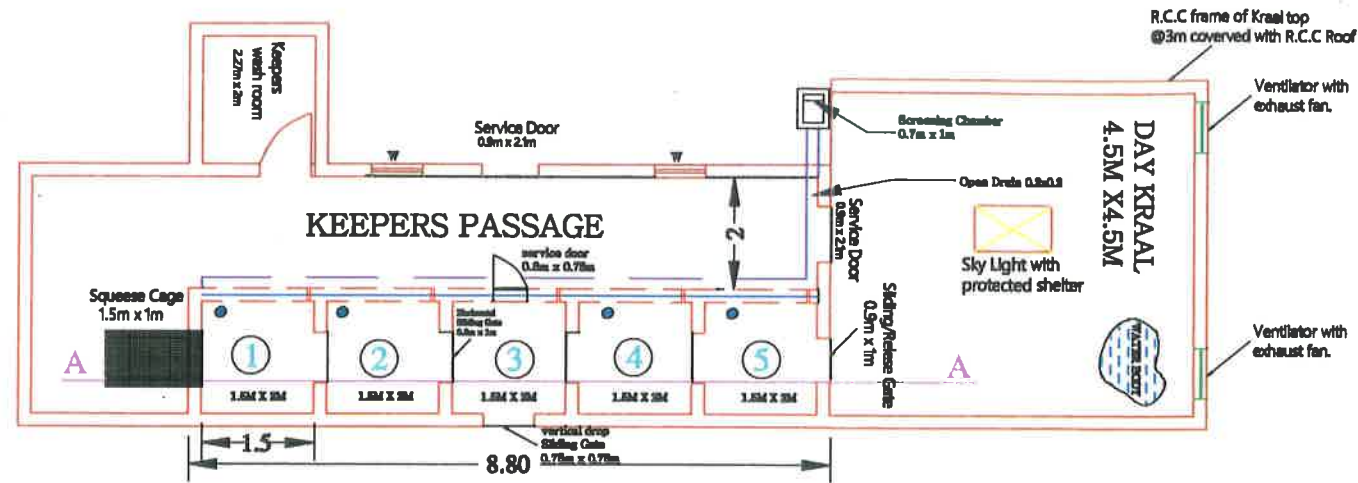
REVISED & RESUBMITTED

*[Signature]*

9/12/14

Executive Director  
Bannerghatta Biological Park  
Bannerghatta, Bengaluru

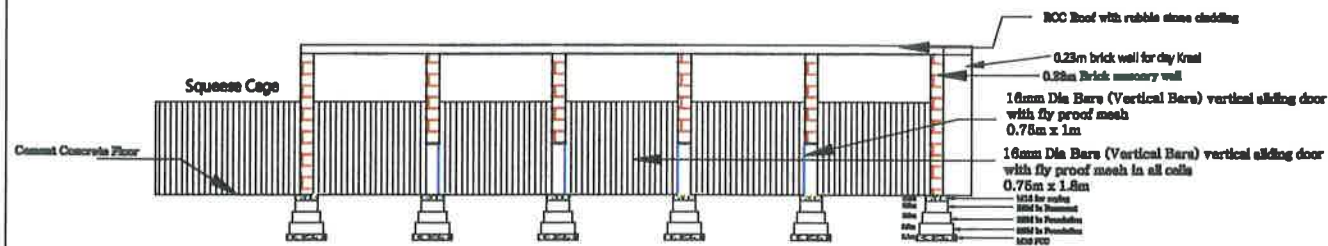
83



ANIMAL HOLDING HOUSE PLAN

Details of Opening

Sl No.	Location	Opening Size	Shutter
1.	Service Door	1m x 2.1m	16mm Dia Bars (Vertical Bars) Slide hung
2.	Keepers gallery to cell	0.75m x 1.8m	16mm Dia Bars (Vertical Bars) vertical sliding door with fly proof mesh
3.	Cell to Cell	0.9m x 1m	16mm Dia Bars (Vertical Bars) Horizontal sliding door with fly proof mesh
4.	Cell to Arena	0.75m x 0.75m	16mm Dia Bars (Vertical Bars) vertical drop sliding door with fly proof mesh
5.	Ventilator at Animal holding house	0.6m x 0.3m	Wooden frame with 16mm Dia Bars
6.	Windows at Keepers passage	0.9m x 1.2m	Wooden frame and shutter with 16mm Dia Bars



ANIMAL HOLDING HOUSE SECTION A-A

May be attached

9.12

REVISED & RESUBMITTED

9/12/14

Executive Director  
Bannerghatta Biological Park  
Bannerghatta, Bengaluru

B. S. BONAL, IFS  
Member Secretary  
Central Zoo Authority  
Ministry of Environment, Forests & Climate Change  
of India, New Delhi-110001