

76

5th EGM (15.07.2008)

Primate (Monkey)

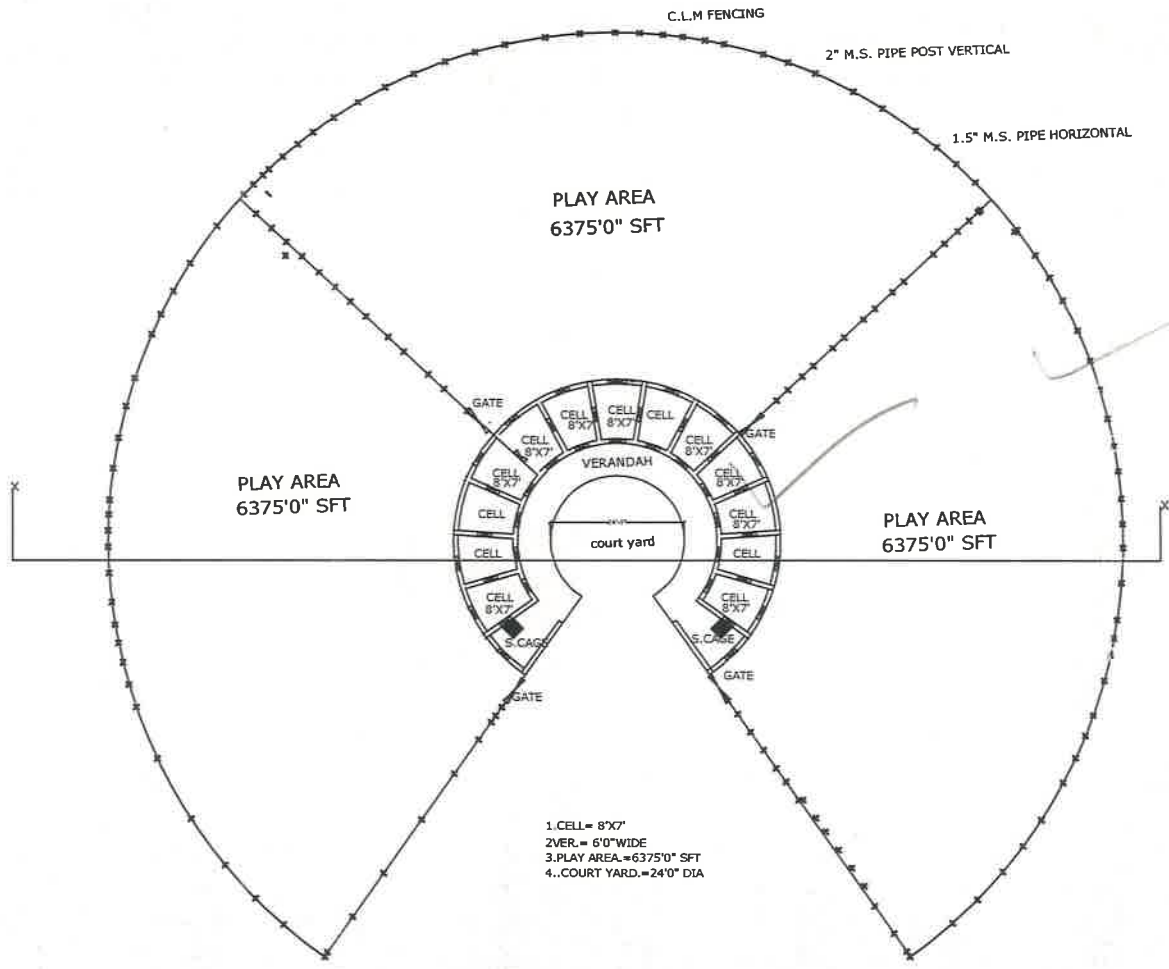
Bhagwan Birsa Biological Park, Ranchi

Approved subject to: a close top enclosure with an area of 600 sq mts. Each of 15 feet high attached with the night shelter as prescribed may be provided for a pair of animal with proper structural stability considering the animals to be housed..

DESIGN OF PRIMATE ENCLOSURE IN RESCUE CENTRE BERWEY

76

33



- 1. CELL = 8'X7'
- 2. VER. = 6'0" WIDE
- 3. PLAY AREA = 6375'0" SFT
- 4. COURT YARD = 24'0" DIA

4..COURT YARD.=35' DIA

COUNTERSIGNED

[Signature]
C.F. AND DIRECTOR
B.B.M. BIO. PARK ,RANCHI

COUNTERSIGNED

[Signature]
ASST. CONSERVATOR OF FOREST
B.B.M. BIO. PARK ,RANCHI

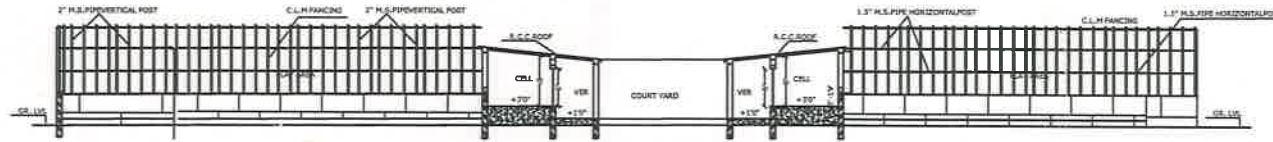
SUBMITTED BY

[Signature]
R.F.O.
B.B.M. BIO. PARK ,RANCHI

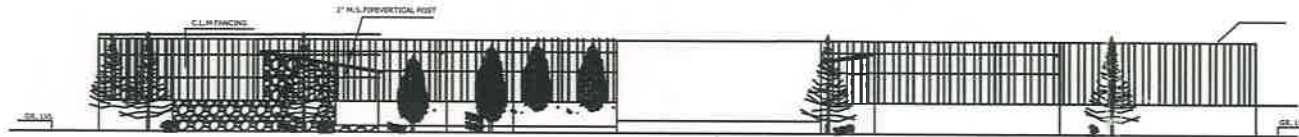
PREPARED BY

[Signature]
ARCHITECT GROUP
MORABADI, RANCHI

DESIGN OF PRIMATE ENCLOSURE IN RESCUE CENTRE BERWEY



SECTION X-X



ELEVATION

4..COURT YARD.=35' DIA

COUNTERSIGNED

C.F. AND DIRECTOR
B.B.M. BIO. PARK ,RANCHI

COUNTERSIGNED

ASST CONSERVATOR OF FOREST
B.B.M. BIO. PARK ,RANCHI

SUBMITTED BY

R.F.O.
B.B.M. BIO. PARK ,RANCHI

PREPARED BY

ARCHITECT GROUP
MORABADI, RANCHI