

58

22<sup>nd</sup> EGM (02.06.2011)

Feed store

Aizawl Zoological Park, Mizoram

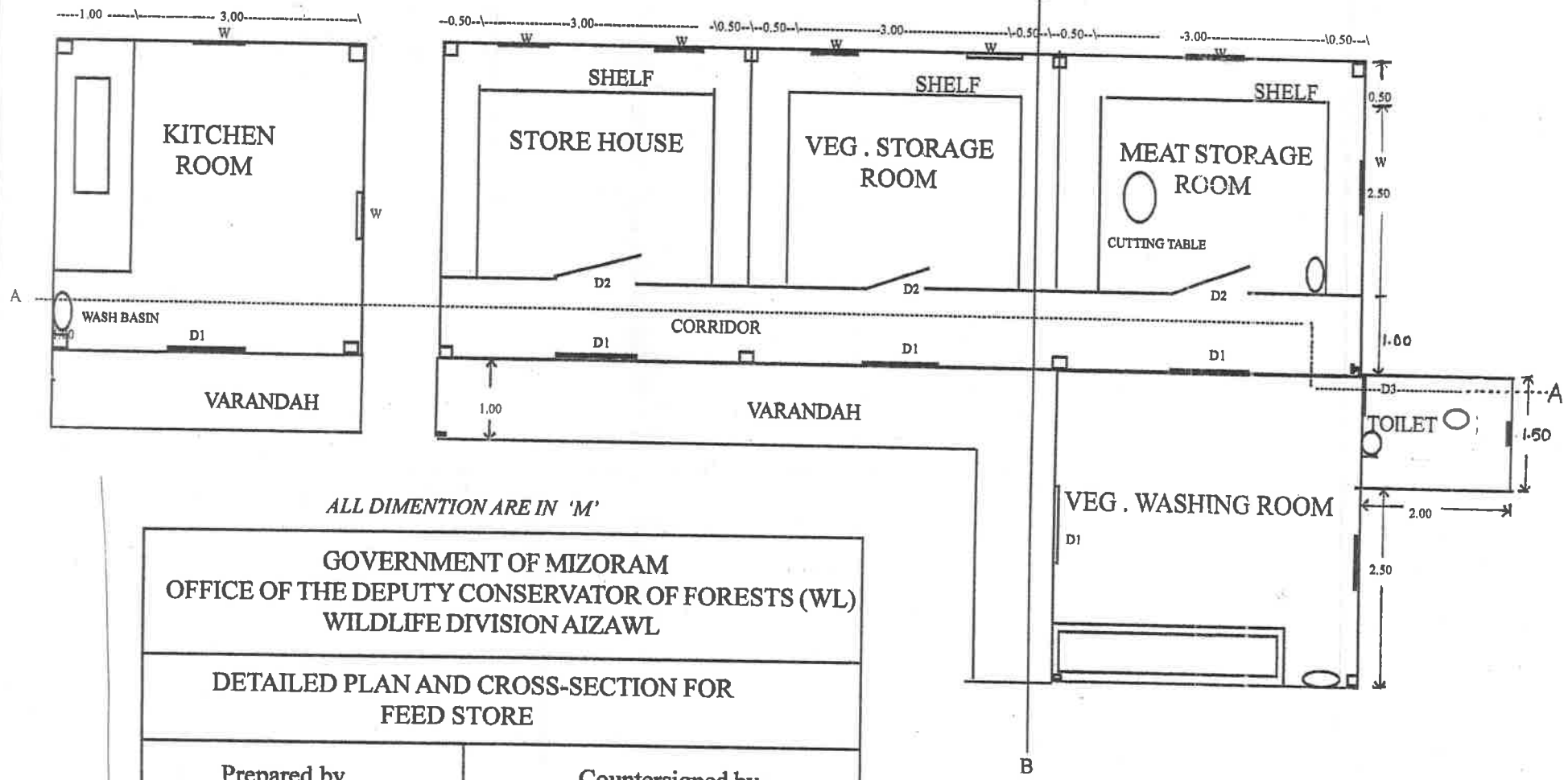
Approved subject to:

No entrance from the paddock area to be made instead the entrance should be made through feeding and retiring cells.

38

106

### DETAILED PLAN OF FEED STORE



ALL DIMENTION ARE IN 'M'

GOVERNMENT OF MIZORAM  
 OFFICE OF THE DEPUTY CONSERVATOR OF FORESTS (WL)  
 WILDLIFE DIVISION AIZAWL

DETAILED PLAN AND CROSS-SECTION FOR  
 FEED STORE

Prepared by

*Zuhik*  
 Junior Engineer  
 Wildlife Division  
 Aizawl: Mizoram

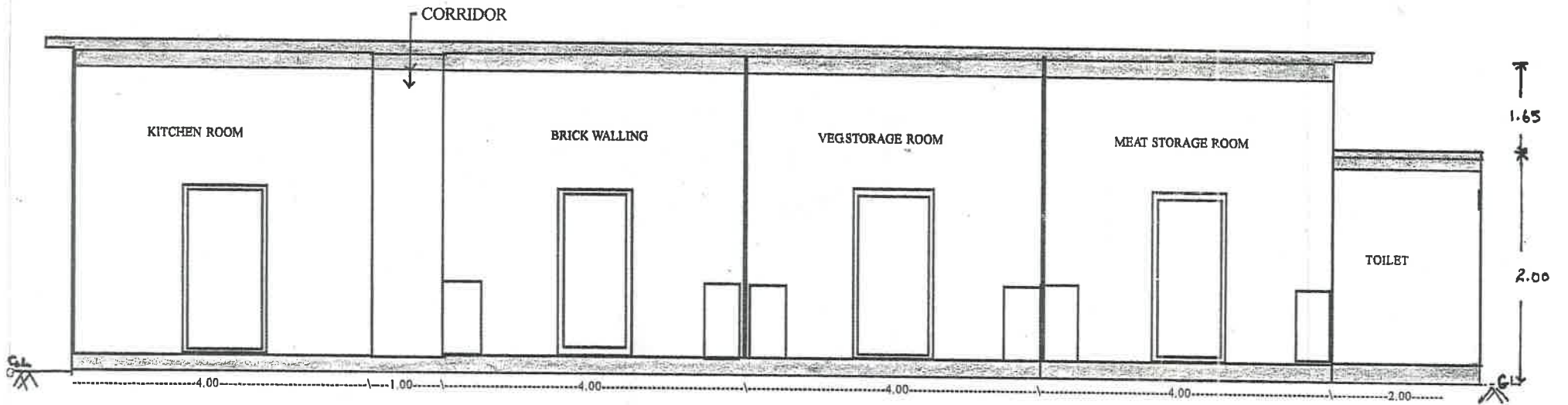
Countersigned by

*[Signature]*  
 Dy. Conservator of Forests  
 Wildlife Division  
 Aizawl: Mizoram

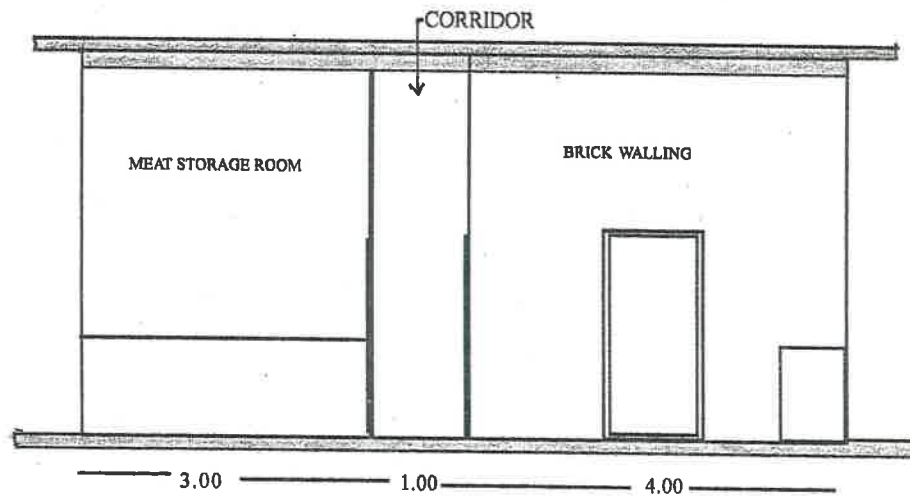
ALL DIMENTION ARE IN 'm'

107

58



**SECTION AT AA**



**SECTION AT B B**

ALL DIMENTION ARE IN 'm'