

34

39th EGM (01.03.2013)

Boundary wall fence

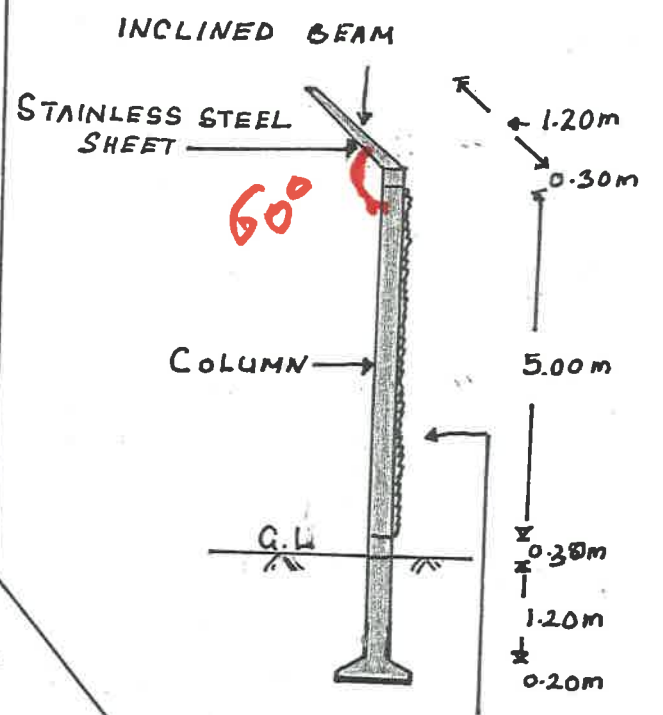
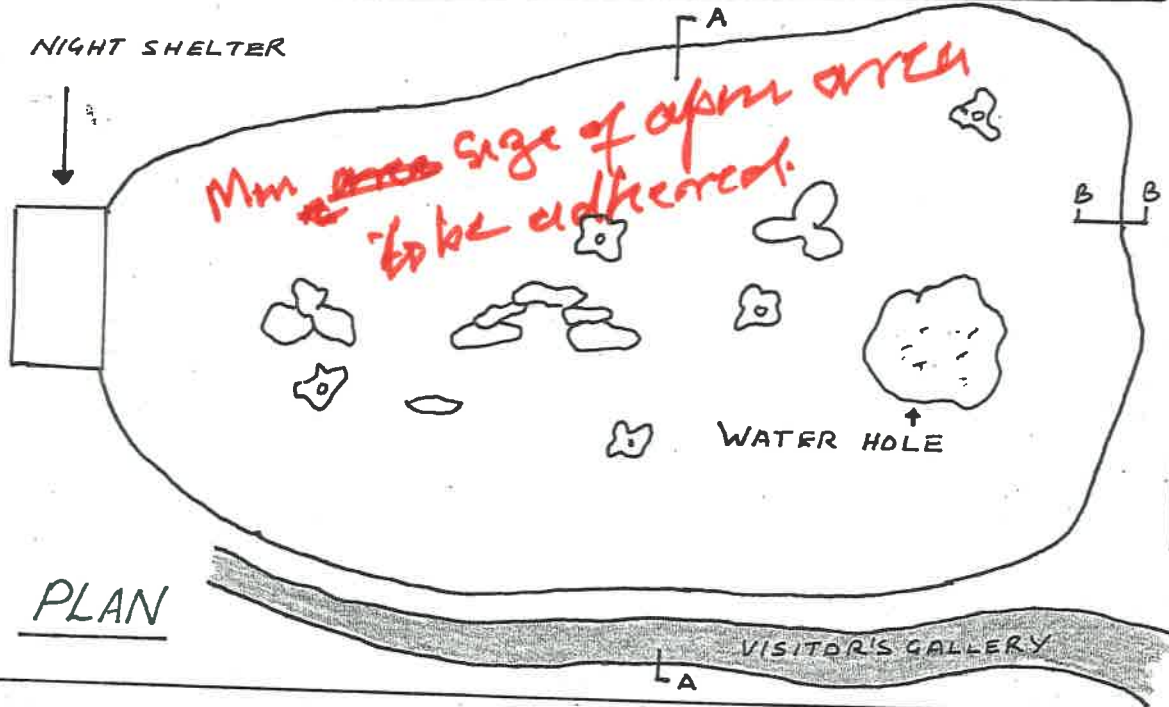
Aizawl Zoological Park, Mizoram

Approved subject to:

1. Minimum size of the open area should be as per CZA prescription.
2. Overhang of the fencing post should be inclined 60 degree.
3. Details in section at AA & AB should be given with necessary details.

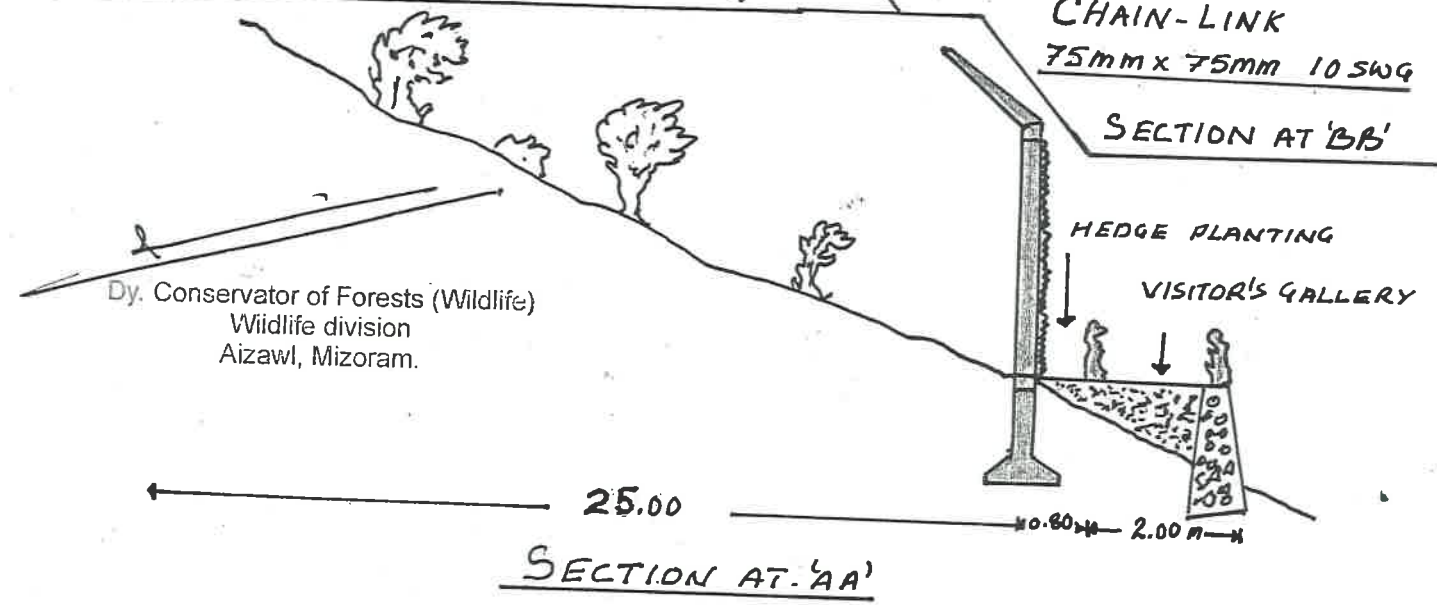
5A

CONSTRUCTION OF ASSAMESE MACAQUE ENCLOSURE (800 m²)



CHAIN-LINK
75mm x 75mm 10 SWG

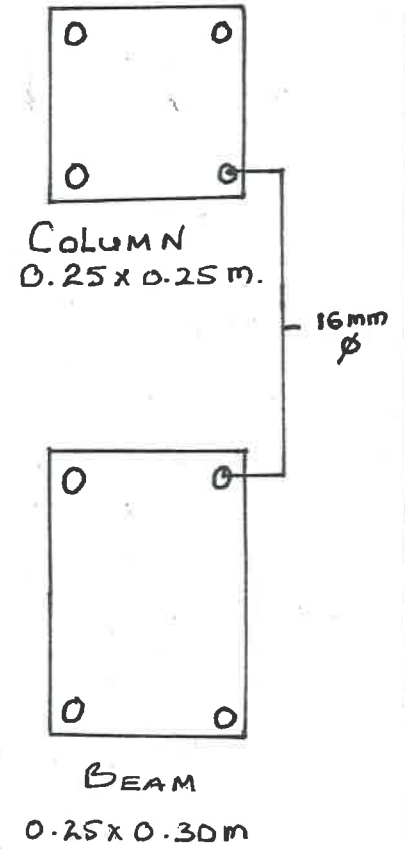
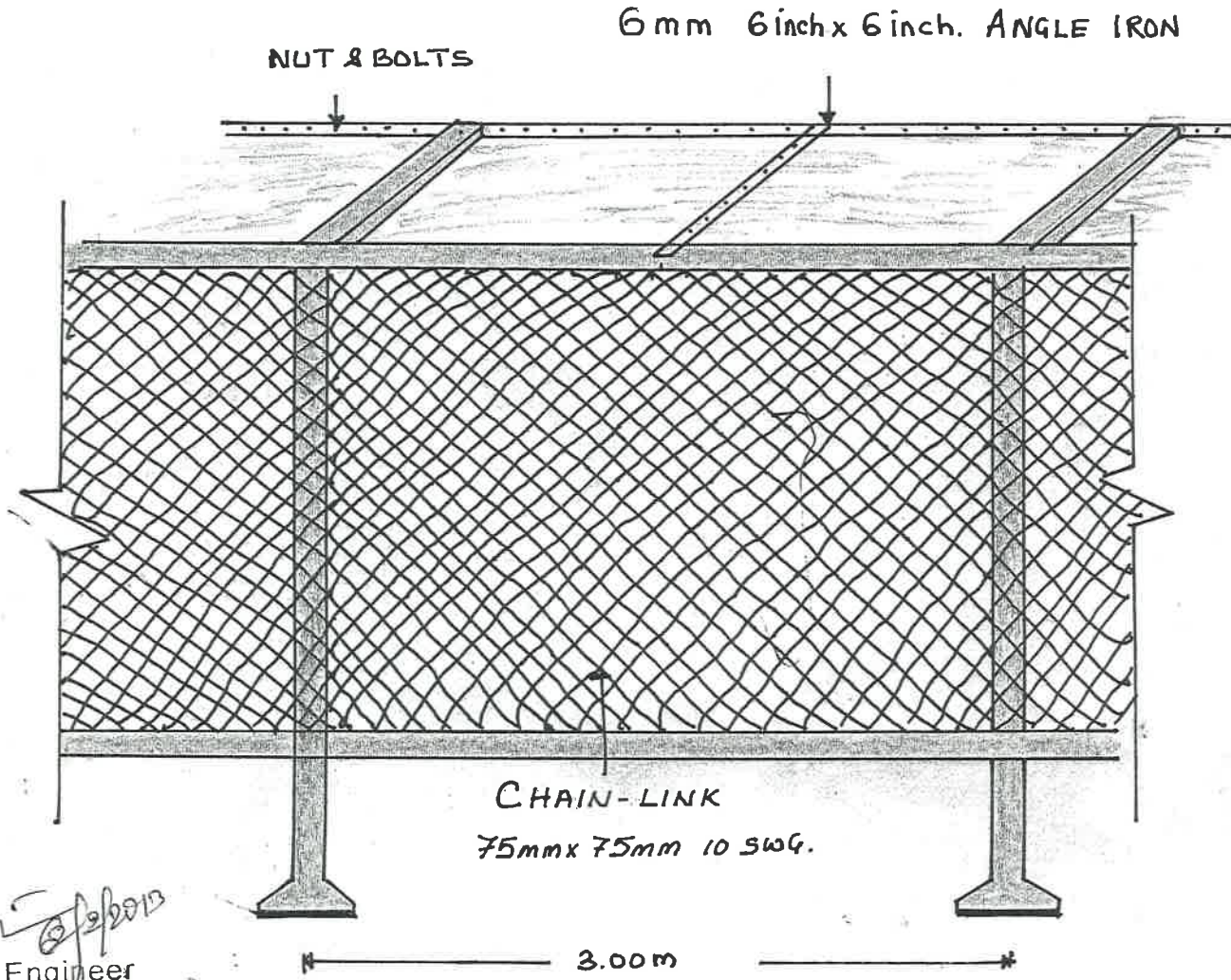
SECTION AT 'BB'



Dy. Conservator of Forests (Wildlife)
Wildlife division
Aizawl, Mizoram.

[Signature]
6/2/2012
Junior Engineer
Wildlife Division
E & F Department
Aizawl : Mizoram

34

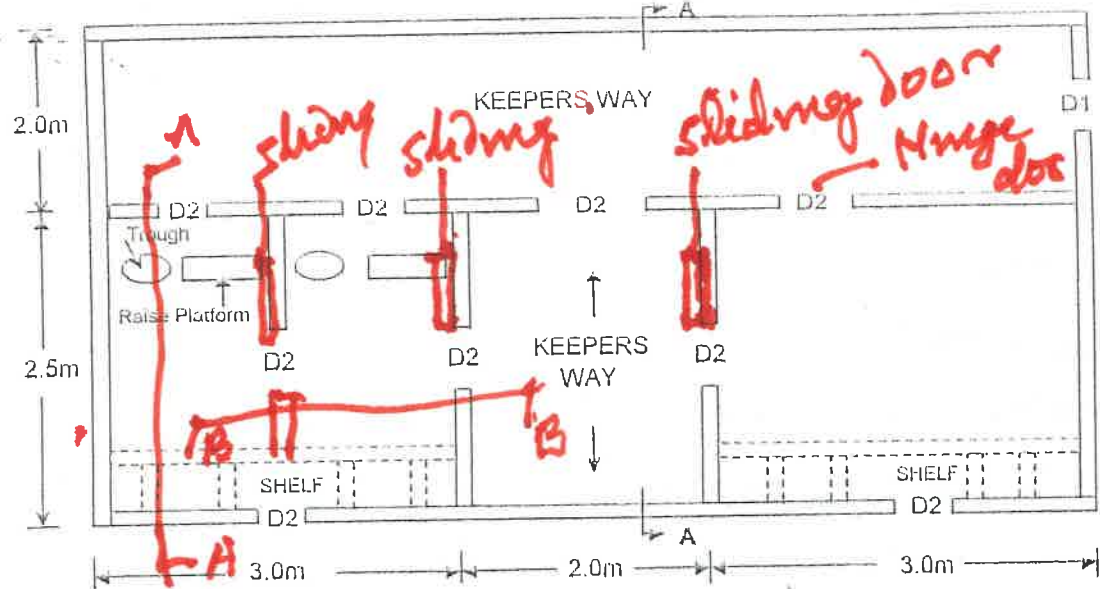


Juh...
 Junior Engineer
 Wildlife Division
 E & F Department
 Aizawl : Mizoram

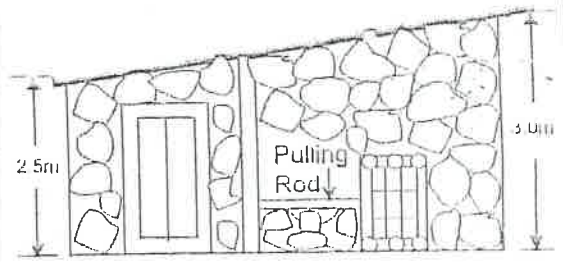
SECTIONAL ELEVATION

Dy. Conservator of Forests (Wildlife)
 Wildlife division
 Aizawl, Mizoram.

ANIMAL HOUSE (Assamese Macaque)



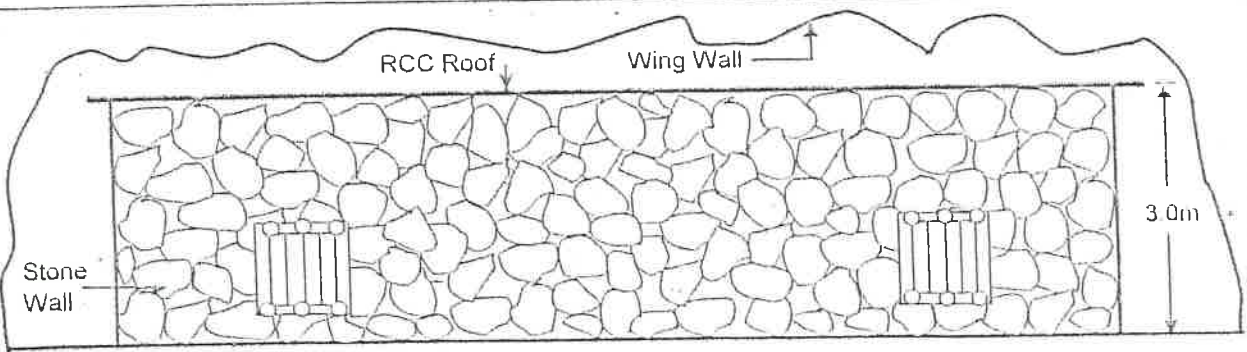
PLAN



SECTION AT - AA

COUNTERSIGNED

By Conservator of Forests (Wildlife)
Wildlife Division
Aizawl : Mizoram



ELEVATION

D1 = 1m x 1.8m SWING
D2 = 1m x 1.5m SIDE-SLIDE

[Signature]
Junior Engineer
Wildlife Division
E & F Department
Aizawl

NOT TO SCALE

1. Give sections of house showing A-A & B-B, elevation etc