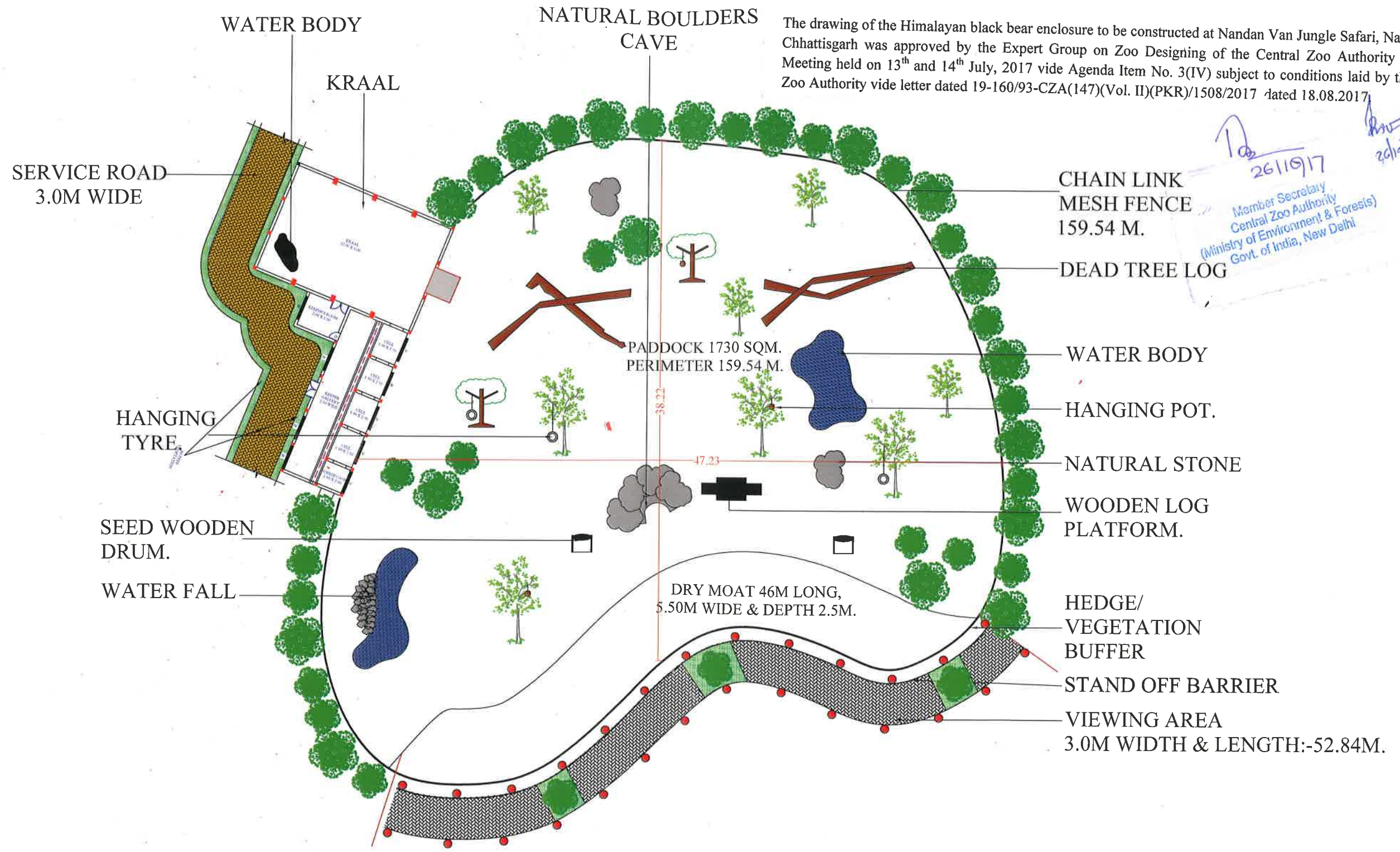


HIMALAYAN BEAR ENCLOSURE PLAN, NANDAN VAN JUNGLE SAFARI, NAYA RAIPUR



The drawing of the Himalayan black bear enclosure to be constructed at Nandan Van Jungle Safari, Naya Raipur, Chhattisgarh was approved by the Expert Group on Zoo Designing of the Central Zoo Authority in its 74th Meeting held on 13th and 14th July, 2017 vide Agenda Item No. 3(IV) subject to conditions laid by the Central Zoo Authority vide letter dated 19-160/93-CZA(147)(Vol. II)(PKR)/1508/2017 dated 18.08.2017

26/11/17
Member Secretary
Central Zoo Authority
(Ministry of Environment & Forests)
Govt. of India, New Delhi



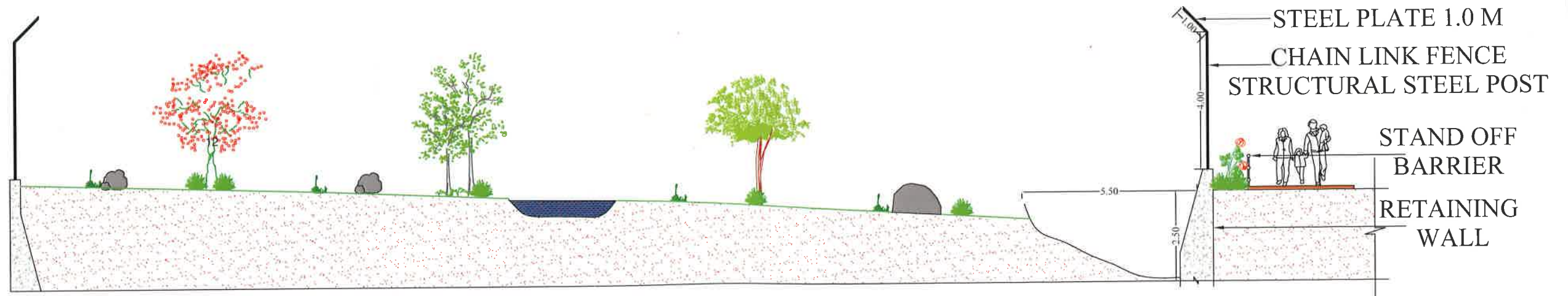

 DIRECTOR CUM DFO
 JUNGLE SAFARI RAIPUR


 ASSISTANT DIRECTOR
 JUNGLE SAFARI RAIPUR


 RANGE OFFICER UNIT NO.3
 JUNGLE SAFARI RAIPUR

HIMALAYAN

CROSS SECTION OF BEAR PADDOCK AREA, NANDAN VAN JUNGLE SAFARI, NAYA RAIPUR

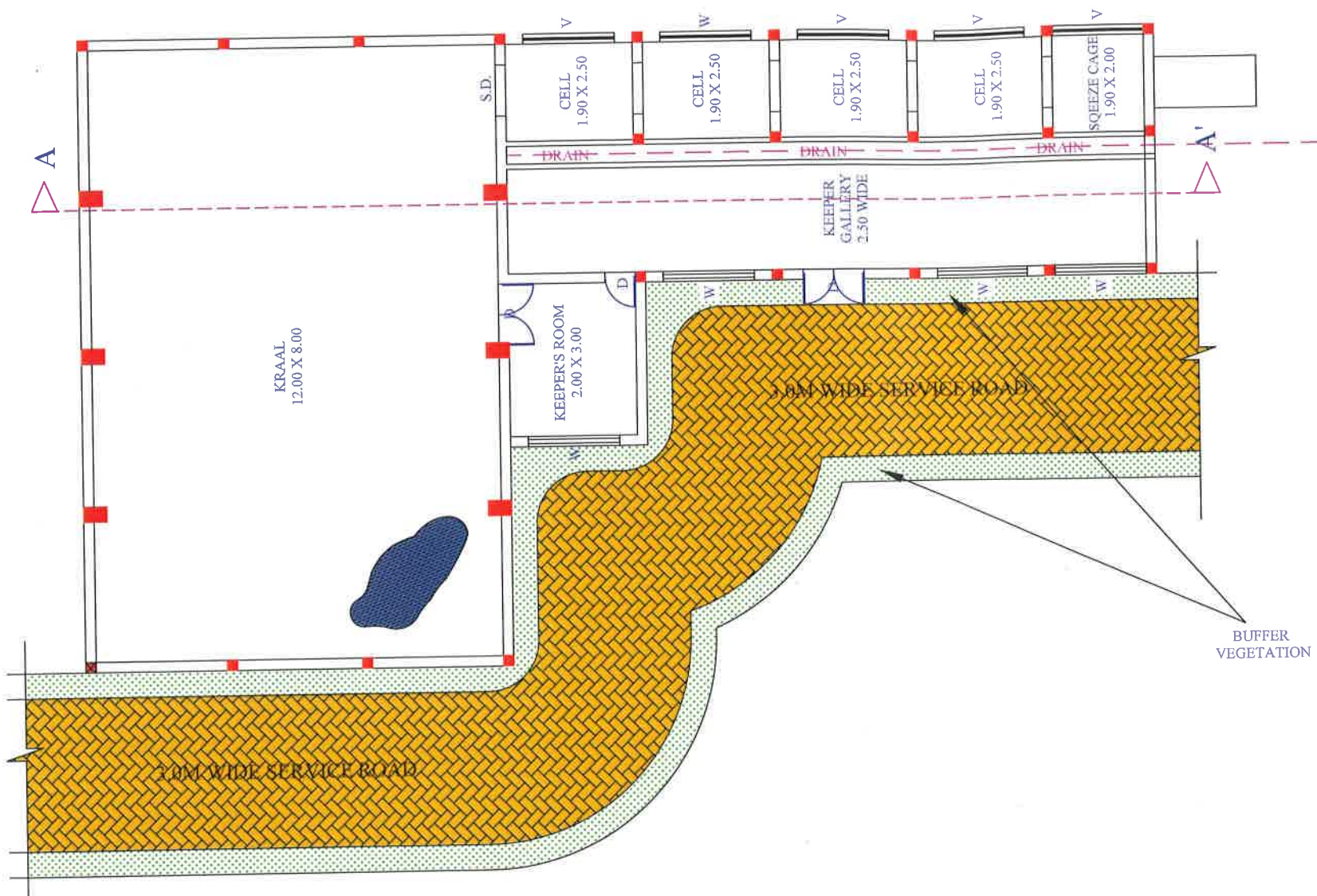



DIRECTOR CUM DFO JUNGLE
SAFARI RAIPUR

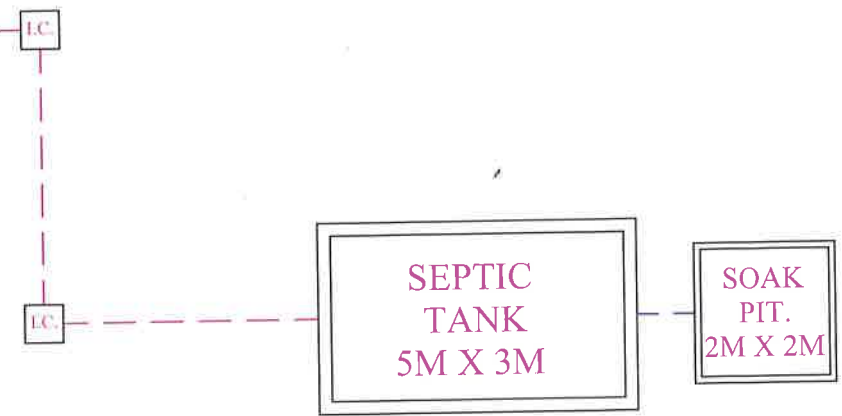

ASSISTANT DIRECTOR JUNGLE SAFARI
RAIPUR


RANGE OFFICER UNIT NO.3 JUNGLE SAFARI
RAIPUR

HIMALYAN BEAR KRAAL & FEEDING CELL PLAN NANDAN VAN JUNGLE SAFARI, NAYA, RAIPUR



SCHEDULE OF OPENING	
WINDOW "W"	1.5X1.2M.
VENTILATION "V"	1.0X0.5M.
SLIDING DOOR "S.D."	0.9X0.75M.
KEEPERS ENTRY GATE	1.8X2.0M.
SERVICE DOOR	1.2X2.0M.
DOOR OPENING TOWARD PADDOCK FROM KRAAL	1.2X1.5M.



[Signature]
DIRECTOR CUM DFO JUNGLE SAFARI RAIPUR

[Signature]
ASSISTANT DIRECTOR JUNGLE SAFARI RAIPUR

[Signature]
RANGE OFFICER UNIT NO.3 JUNGLE SAFARI RAIPUR