

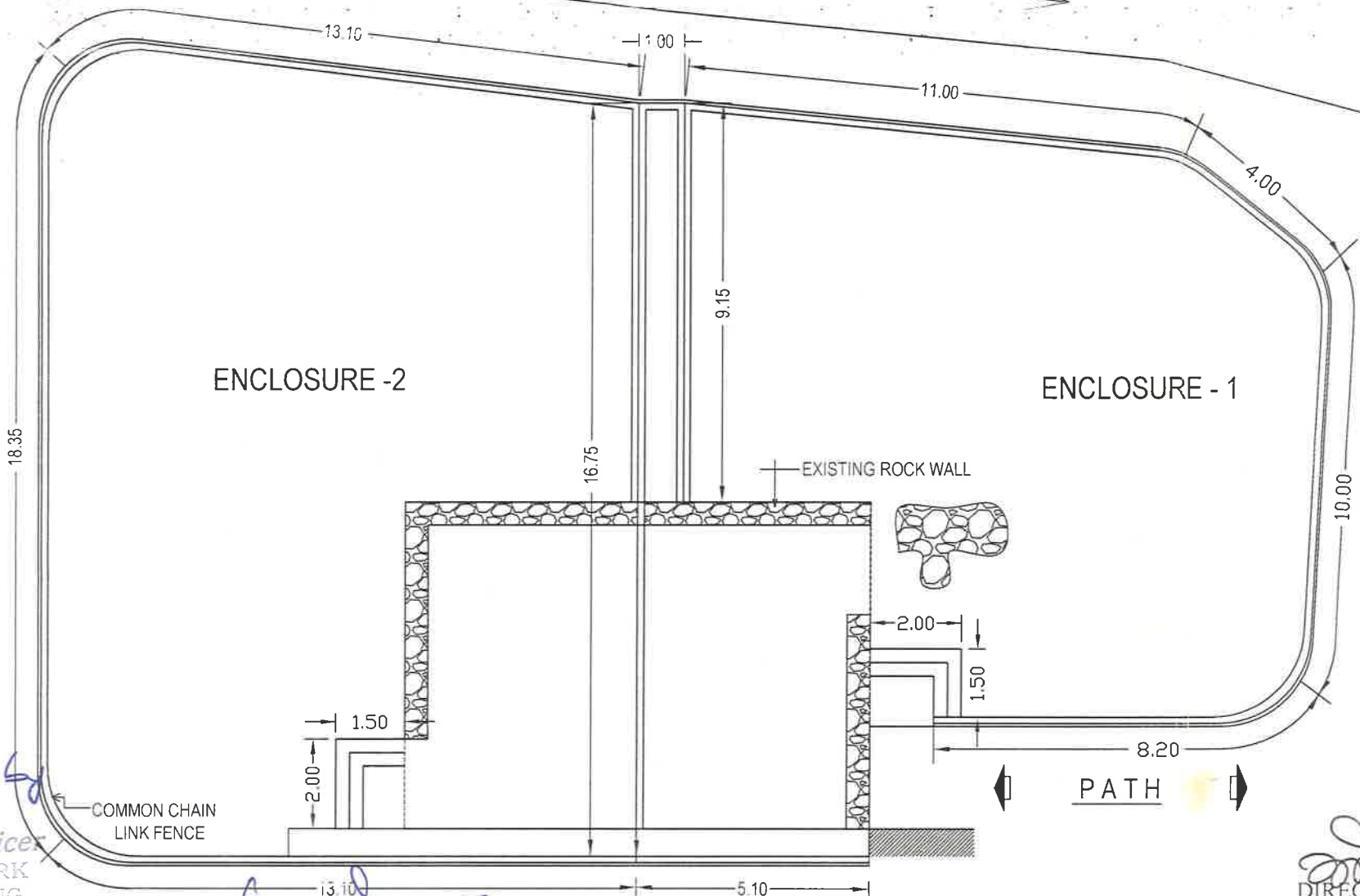
257

112

# PLAN SHOWING RENOVATION OF THE HOUSE AND ENCLOSURE OF COMMON LEOPARD AT P.N.H.Z. PARK, DARJEELING

SCALE- 1 : 50

ROAD TO H. M. I.



Submitted by  
*[Signature]*  
Estate Officer  
PNHZ PARK  
DARJEELING

SHEET NO.1

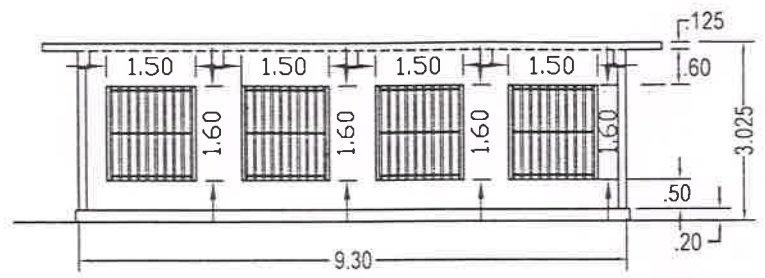
*[Signature]*  
DEPUTY DIRECTOR  
PNHZ Park, Darjeeling

PLAN

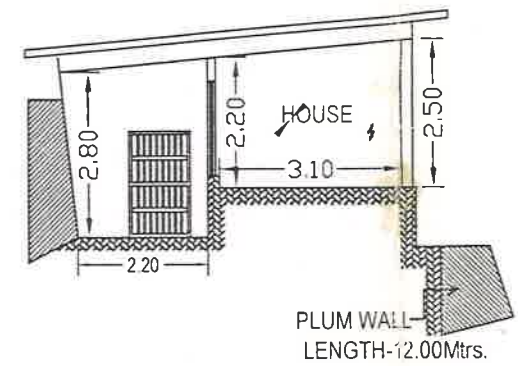
*[Signature]*  
DIRECTOR  
P.N.H.Z. PARK, DARJEELING  
DIRECTOR  
PNHZ Park, Darjeeling

# PLAN AND ELEVATION SHOWING THE RENOVATION OF COMMON LEOPARD HOUSE AND ENCLOSURE AT P.N.H.Z. PARK, DARJEELING

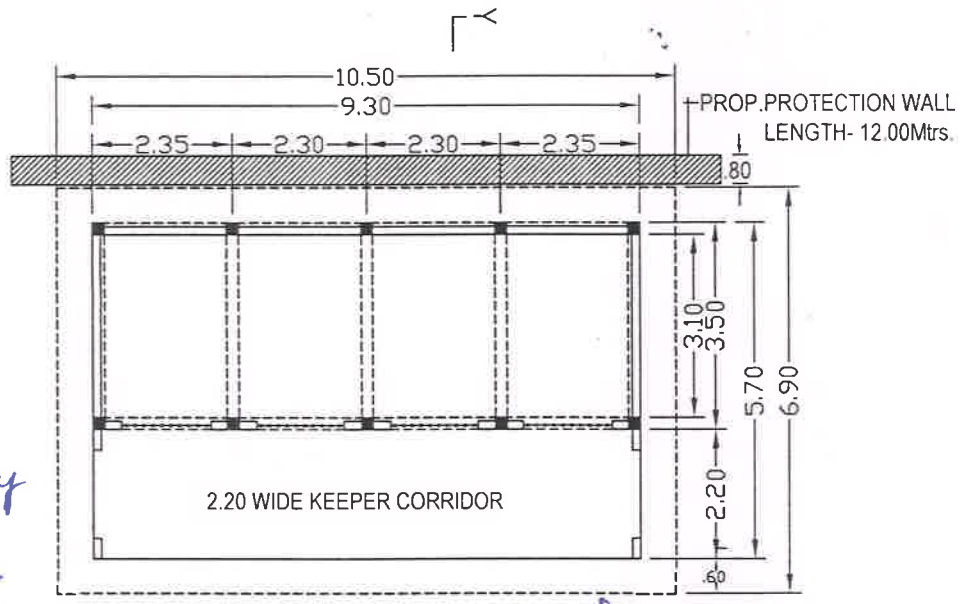
SCALE- 1 : 50



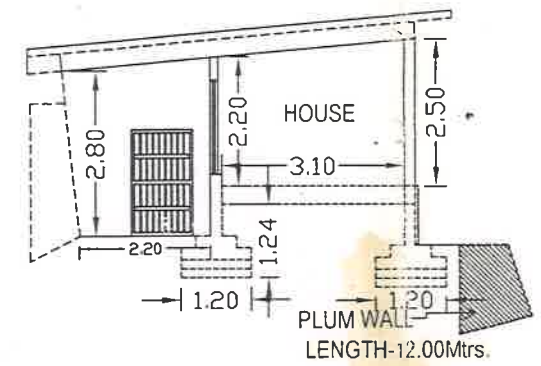
FROM INSIDE FRONT ELEVATION



SIDE ELEVATION



PROPOSED PLAN



SECTIONAL ELEVATION ON Y Y

Submitted by

*[Signature]*  
Estate Officer  
PNHZ PARK  
DARJEELING

*[Signature]*  
DEPUTY DIRECTOR  
PNHZ Park, Darjeeling

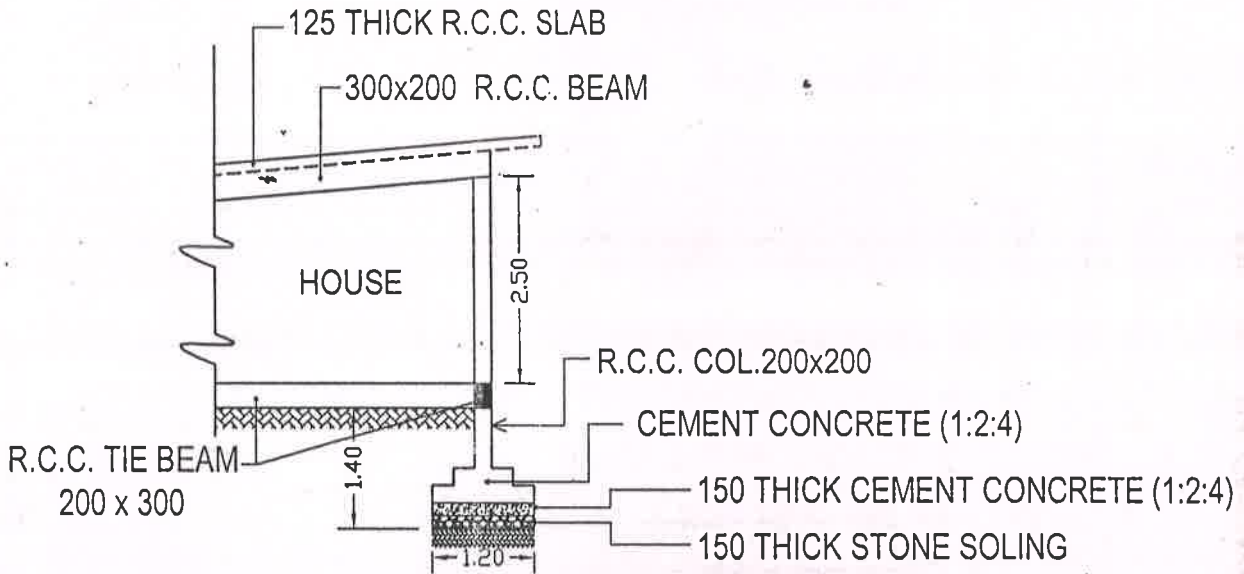
SHEET NO.2

*[Signature]*  
DIRECTOR  
P.N.H.Z. PARK, DARJEELING  
DIRECTOR  
PNHZ Park, Darjeeling

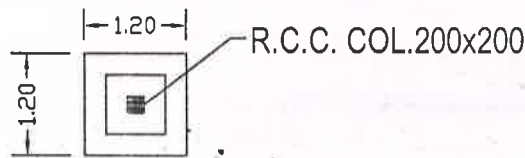
114259

# PLAN SHOWING THE FOUNDATION DETAILS OF RENOVATION OF LEOPARD HOUSE AND ENCLOSURE AT P.N.H.Z. PARK, DARJEELING

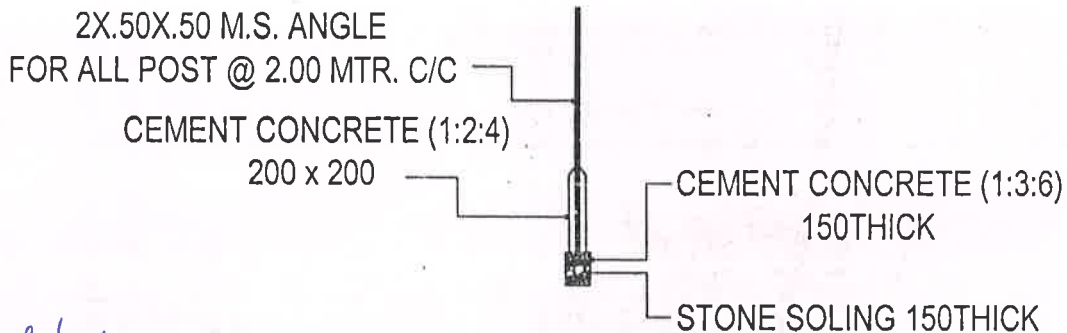
SCALE- 1 : 50



## SECTIONAL ELEVATION



## FOUNDATION PLAN



## DETAILS OF M.S. ANGLE IRON FOUNDATION

Submitted by

*[Signature]*  
Estate Officer  
PNHZ PARK  
DARJEELING

*[Signature]*

DEPUTY DIRECTOR  
PNHZ Park, Darjeeling

*[Signature]*

DIRECTOR  
PNHZ Park, Darjeeling

SHEET NO. 3